

VDP102 - Quick Start Guide



The VDP102 is a modern design video door camera with a backlit call button, IR LED and extra wide angle 2.4mm lens for a 110° viewing angle. Rust and weatherproof this unit is well built with anti-vandal properties. It is supplied with a rain guard for more exposed installations and an optional angled bracket for fitting in the best possible position.

Full Instruction Manual



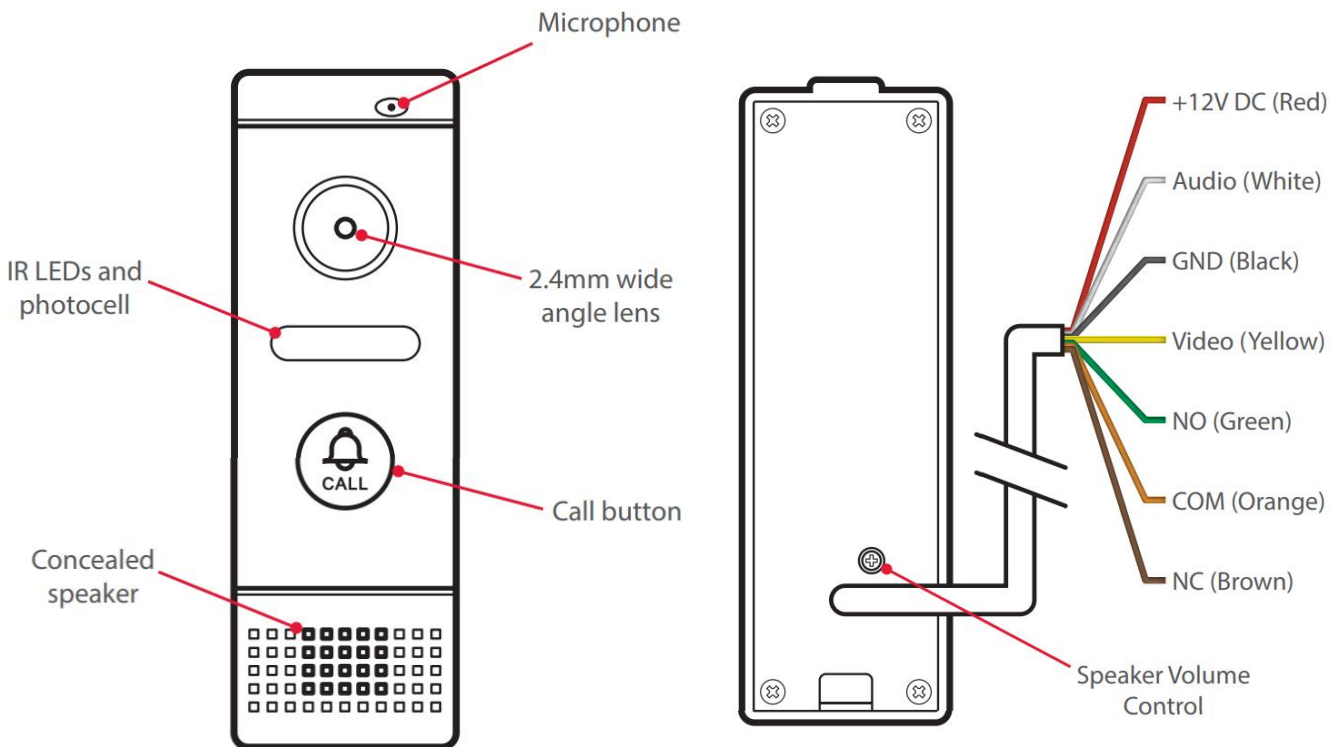
www.systemq.com/PDF/manual/xVDP102.pdf

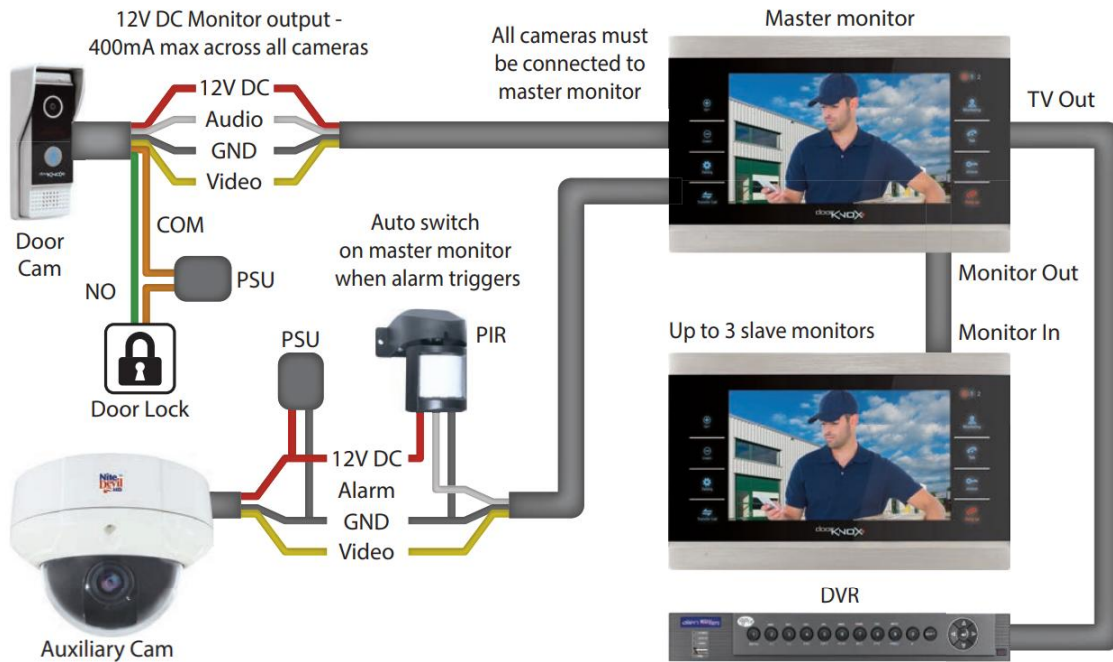
User Information

- There are no user serviceable parts, opening or attempting to repair the product will void the warranty.
- Do not install or use the device if the wires connected are damaged or have been subjected to water ingress.
- Shut off all power to the access control system before wiring this device.
- Maintain a clean and safe environment at all times

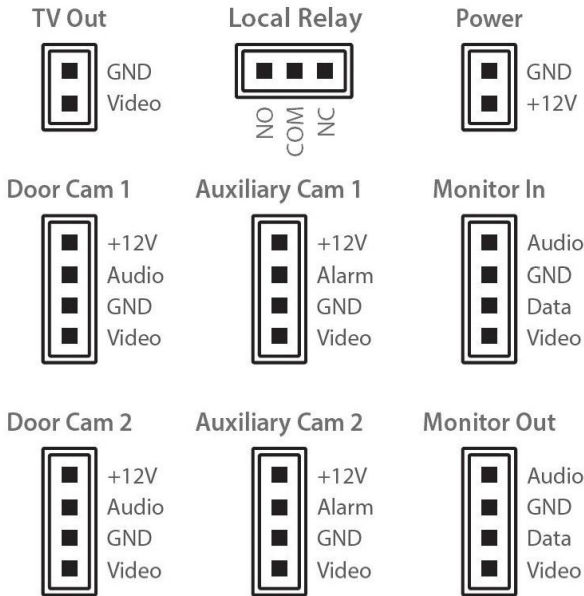
All of the DoorKnox cameras have connection cables terminated into the same 7 colour coordinated wires. 4 wires are used to connect to the monitor and then 2 of the 3 remaining wires are used to connect to an electronic door lock.

The common (COM) wire is always used along with either the normally open (NO) or normally closed (NC) wire depending on the lock type.





Monitor Connections



Mounting

Recommended to be installed between 150 to 160cm above the floor (About 5 feet), it should not be mounted in direct sunlight.

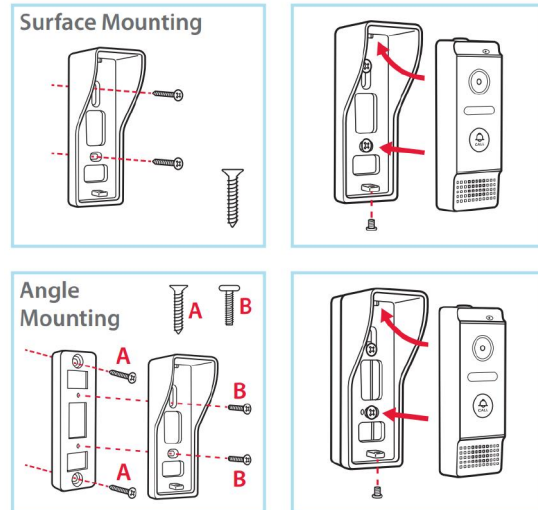


Image Sensor	1/3" CMOS
Resolution	800 TVL
Lens Type	2.4mm Pinhole Fixed Lens
Viewing Angle	110° Wide Angle
InfraRed LEDs	3
Input Voltage	12V DC
Consumption	200mA
IP Rating	IP64
Mounting Options	Surface / Angle (Supplied)
Finish	Silver & Black Gloss
Build	Rust Proof Aluminium Alloy
Dimensions	128 x 49x 41 mm (including rain guard)

All specifications are approximate. System Q Ltd reserves the right to change product specifications or features without notice. Whilst every effort is made to ensure that these instructions are complete and accurate, System Q Ltd cannot be held responsible for any losses, no matter how they arise, from errors or omissions in these instructions, or the performance or non-performance of the equipment referred to.

