



## User Instruction Manual

Models: ALIEN804 / ALIEN808 / ALIEN816



### Dual IP and Analogue Hybrid Video Recorder

**Version 1.0.1**

**Email:** [support@alienDVR.com](mailto:support@alienDVR.com)

Last Revised 01/11/2011

Before using the product, please make sure that you:

- Keep all liquids away from DVR
- Install the DVR in a well-ventilated area
- Make sure environmental conditions meet factory specifications
- Install a manufacturer recommended HDD



This symbol on the products and/or accompanying documents means that used electronic equipment must not be mixed with general household waste. For treatment, recovery and recycling please return this unit to your trade supplier or local designated collection point as defined by your local council.



WEE/CG0783SS

**All specifications are approximate. alienDVR.com reserves the right to change any product specification or features without notice. Whilst every effort is made to ensure that these instructions are complete and accurate, alienDVR.com or any company associated with it, cannot be held responsible in any way for any losses, no matter how they arise, or from errors or omissions in these instructions.**

<b>Contents</b>	<b>Page No.</b>
Attention	2
Contents	3
1. Introduction	6
1.1 Overview	6
1.2 Product Key Features	7
1.3 Operating your DVR	10
1.4 Using the Infra Red controller	13
1.4.1 If the remote controller does not operate the DVR	14
1.5 Using a USB mouse	14
1.6 Using the Soft Keyboard	15
1.7 Rear Panel Diagram	16
2. Getting Started	17
2.1 Starting and Shutting down the DVR	17
Option 1 : Standard Shutdown	17
Option 2 : Manual Shutdown	17
2.2 Rebooting and Locking Your DVR	18
2.3 Using the Setup Wizard	18
3. Live Preview	22
3.1 Watching a Live Preview	22
3.2 Operating Live Preview	22
3.2.1 Using the Mouse in Live Preview	23
3.2.2 Using Digital Zoom	24
3.2.3 Using an Aux Monitor	24
3.3 Configuring Live Preview Displays	25
3.3.1 Setting Camera Order	26
3.3.2 Channel Zero Encoding	27
4. Record Settings	28
4.1 Configuring Settings for Recording	28
4.1.1 Initialising Record Settings	28
4.1.2 Scheduling a Recording	29
4.1.3 Starting a Manual Recording	30
4.2 Protecting Recorded Files	30
4.2.1 Locking and Unlocking Recorded Files	30
4.2.2 Setting HDD to Read-Only	31
4.3 Configuring Advanced HDD Settings	32
4.3.1 Setting up HDD Redundancy	32

5.	Playback	34
5.1	Playing Back a Recording	34
5.1.1	Understanding the Playback Interface	34
5.2	Playing Back from a Video Search	35
5.3	Playing Back from Event Search	36
5.4	Playing Back from Live Preview	36
5.5	Playing Back from System Log	37
5.6	Playing Back Frame by Frame	38
5.7	Smart Search	38
5.8	Using Digital Zoom	39
6.	Backup	40
6.1	Exporting Files	40
6.2	Exporting Event Search Files	42
6.3	Exporting Video Clips	42
6.4	Exporting Files via e-SATA (optional)	43
6.5	Managing Backup Devices	44
7.	Alarm Settings	45
7.1	Configuring Alarms	45
7.1.1	Setting up Motion Detection	45
7.1.2	Setting up Sensor Alarms	47
7.1.3	Triggering Alarm Outputs Manually	49
7.1.4	Detecting Video Loss	49
7.1.5	Detect Video Tampering	51
7.2	Setting Exception	53
7.2.1	Understanding Exception Trigger Options	53
8.	Network Settings	54
8.1	Configuring Network Settings	54
8.1.1	Configuring Basic Settings	54
8.1.2	Configuring PPPoE Settings	55
8.1.3	Configuring DDNS	55
8.1.4	Configuring an NTP Server	56
8.1.5	Configuring a Remote Alarm Host	56
8.1.6	Configuring Multicast	57
8.1.7	Configuring MTU	57
8.1.8	Configuring Server and HTTP Ports	58
8.1.9	Configuring Email Settings	58
9.	PTZ Controls	60
9.1	Navigating PTZ Menus	60
9.2	Configuring PTZ Settings	60
9.3	Setting PTZ Presets, Patrols & Patterns	61
9.3.1	Understanding PTZ Controls	61

9.3.2	Customising Presets	61
9.3.3	Customising Patrols	62
9.3.4	Customising Patterns	63
10.	Camera Management	65
10.1	Configuring IP Cameras	65
10.2	Configuring OSD Settings	68
10.3	Setting up Privacy Mask	68
10.4	Adjusting Display Settings	69
11.	HDD Management	71
11.1	Initialising HDDs	71
11.2	Setting Network HDD	71
11.3	Setting HDD Groups	72
11.4	Checking HDD Status	74
11.4.1	Setting HDD to Read-Only	74
11.4.2	Setting HDD to Redundancy	74
11.5	Checking HDD Status	75
11.6	Configuring HDD Alarms	76
12.	DVR Management	77
12.1	Configuring General Settings	77
12.2	Configuring Advanced Settings	78
12.3	Configuring RS-232 Port Settings	78
12.4	Managing User Accounts	79
12.4.1	Adding a New User	79
12.4.2	Deleting a User	82
12.4.3	Modifying a User	82
12.5	Importing & Exporting Configuration	83
12.6	Updating System Firmware	83
12.6.1	Updating via a USB device	83
12.6.2	Update via an FTP server	84
12.7	Restoring Default Settings	85
12.8	Viewing System Information	85
12.9	Viewing System Logs	86
13.	Glossary	88
14.	Frequently Asked Questions	89
15.	Menu Structure	90
16.	Record Times for 16 channel DVR	91

# 1. Introduction

## 1.1 Overview

The Alien800 series of digital video recorders comprise of the following models:

### **ALIEN816**

This DVR is the 16 channel hybrid model and can support the following cameras:

Option 1	Option 2	Option 3	Option 4
16 x 4CIF analogue	16 x 4CIF analogue	8 x 4CIF analogue	8 x 4CIF analogue
8 x IP 4CIF	4 x IP 720P	16 x IP 4CIF	8 x IP 720P

### **ALIEN808**

This DVR is the 8 channel hybrid model and can support the following cameras:

Option 1	Option 2
8 x 4CIF analogue	8 x 4CIF analogue
8 x IP 4CIF	4 x IP 720P

### **ALIEN804**

This DVR is the 4 channel hybrid model and can support the following cameras:

Option 1	Option 2
4 x 4CIF analogue	4 x 4CIF analogue
4 x IP 4CIF	2 x IP 720P

## 1.2 Product Key Features

### **Compression:**

- Supports PAL/NTSC video input.
- Adopts H.264 video compression standard.
- DSDH digital video recorders support both analogue cameras and IP cameras.
- Each analogue channel supports dual stream. Main stream supports up to 4CIF resolution and sub stream supports up to CIF resolution.
- Each IP channel of Hybrid unit supports up to UXGA (1600\*1200) resolution.
- Video encoding parameters of each channel can be set separately, including resolution, frame rate, bit rate, image quality.
- Each channel supports normal continuous and event compression parameters.
- Supports both composite stream and video only stream. Audio and video streams are strictly simultaneous.
- Supports watermark.

### **Monitoring:**

- Support three independent local outputs including HDMI, VGA, main and AUX composite video output.
- Full HD HDMI supports 1920\*1080 resolution.
- Supports 1/4/6/8/9/16 screen live view, channel sequence is adjustable.
- Support live view group switch, manual switch and automatic cycle, the interval of automatic cycle can be adjusted. (Automatic cycling refers to sequencing)
- Supports digital zoom on live view.
- Supports shielding the assigned live view channel.
- Supports motion detection, tampering alert, video exception alert and video loss alert.
- Supports privacy mask.
- Supports various PTZ protocols, PTZ preset, patrol and pattern.
- Supports zoom in by clicking the mouse and trace function by dragging mouse.

### **HDD Management:**

- Supports up to 8 x SATA HDDs, 8 x network HDD ( 8 x NAS disks or 7 x NAS disks plus 1 x iSCSI disk) and each disk can support over 2TB capacity.
- Supports S.M.A.R.T. technology.
- Supports HDD standby function.
- Supports hard disk group management.
- HDD file system is compatible with Windows. Use pre-allocating hard disk management technology and no disk defragmentation.

### **Recording and Playback:**

- Supports cycle and non-cycle recording mode.
- Supports normal and event video encoding parameters.
- Supports multiple recording types, including manual, continuous, alarm, motion, motion | alarm and motion & alarm recording, and intelligent recording.
- Supports 8 recording time periods with separate recording types.

- Supports Pre-record and Post-record time for alarm, motion detection and intelligent alarm, and pre-record time for schedule and manual recording.
- Supports lock and unlock video files.
- Supports local redundant recording.
- Supports setting hard disk to read only.
- Supports video data search and playback by channel number, recording type, time, etc.
- Supports video data search by events such as alarm input, motion detection and intelligent alarm.
- Supports video smart search by motion detection event.
- Supports overlay intelligent analysis types on the video.
- Supports digital zoom function in playback.
- Supports pause, rewind, play fast, play slow, skip forward, and skip backward when playback, locating in progress bar by dragging the mouse.
- The Alien800 series supports up to 16-channel synchronous playback dependent on whether 4, 8 or 16 channel and camera resources used. IP cameras reduce total available.

#### **Backup:**

- Supports USB device backup.
- Supports SATA CD/DVD-R/W backup.
- Supports backup by file or by time.
- Supports backup device maintenance and management.
- Supports video clips backup when in playback mode.

#### **Alarm & Exception:**

- Unified management of DVR and IP camera alarm in/out.
- Unified management of DVR alarm in/out.
- Unified management of DVR motion detection, view tampering and video loss.
- Supports alarm in/out arming schedule setting.
- Supports various alarm inputs such as hard disk full, illegal access, network failure, IP conflicts, hard disk errors, video exceptions and video output standard mismatches.
- Supports alarms for camera recording, relay out, on screen warning, audible warning, sending Email and upload to center, etc.
- Supports auto recovery from exceptions.

#### **Network:**

- Supports 10/100/1000M adaptive network interface.
- Supports TCP/IP protocols, PPPoE, DHCP, DNS, DDNS, NTP, NFS, iSCSI and SADP.
- Supports unicast and multicast, TCP, UDP, and RTP for unicast.
- Supports remote search, playback, downloading video files and breakpoint resume.
- Supports remote configuration and remote import and export of DVR settings.
- Supports remote acquisition of device status, system log and alarm status.
- Supports remote button operation, remote locking and unlocking of panel buttons.
- Supports remote format of hard disk, upgrade, reboot, shutdown and other system maintenance operations.
- Supports RS232 and RS485 transparent channel transmission.
- Supports event alarm and exceptions upload to remote management host.

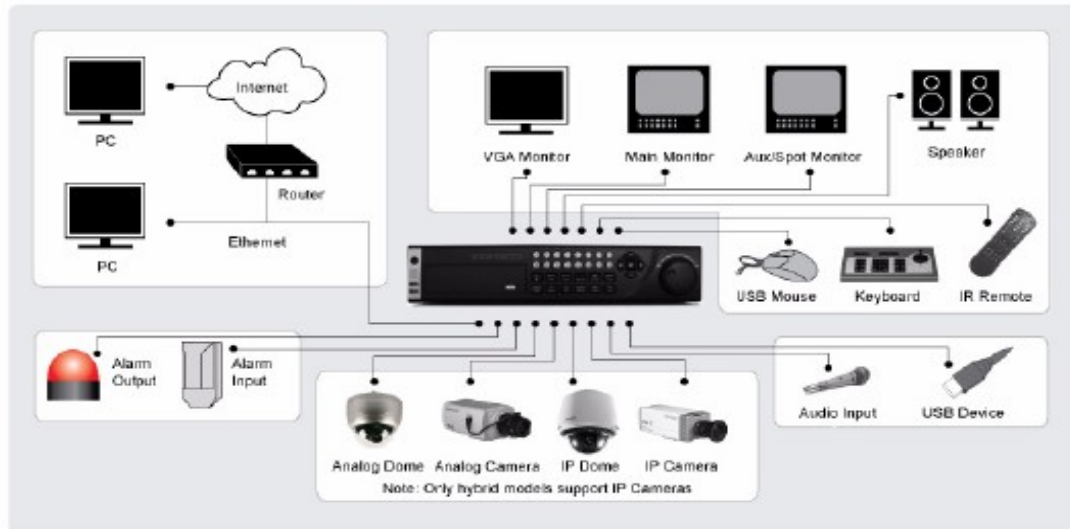


- Supports remote manual recording.
- Supports remote manual alarm output control.
- Supports JPEG image capture.
- Supports remote PTZ control.
- Supports voice talk and broadcast.
- Built-in WEB Server.

**Other:**

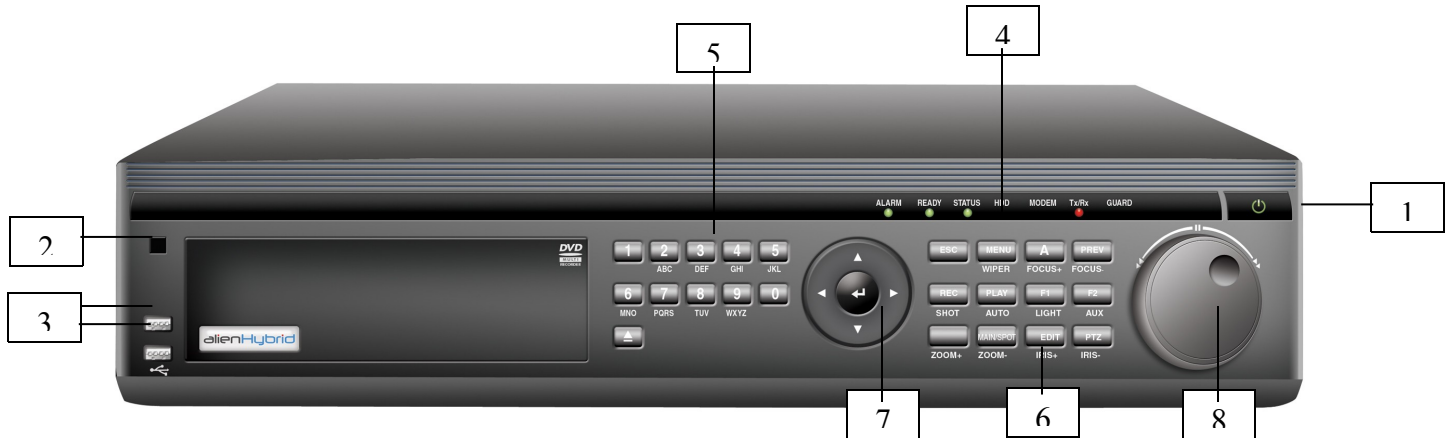
- Supports front panel, mouse, IR controller, special keyboard operation.
- Supports multi-level user management, each user can have individual DVR access rights.
- Powerful DVR log, including operation, alarm and exception log.
- Supports remote manual alarm output control.
- Supports configuration information for import/export.

**Product Application Diagram**



## 1.3 Operating your DVR

There are various methods for controlling your DVR including using the front panel controls, the infra-red remote, soft keyboard or the mouse.



The controls on the front panel include:

**1. Power Button:** Powers DVR on/off.

**2. IR Receiver:** Receiver for IR remote.

**3. USB Ports:** Universal Serial Bus (USB) ports for additional devices such as USB mouse and USB Hard Disk Drive (HDD).

**4. Status Indicators:** Status indicators for different features on the DVR.

- **Alarm:** Alarm indicator turns red when a sensor alarm is detected.
- **Ready:** Ready indicator turns blue when DVR is functioning properly.
- **Status:** Status indicator turns blue when DVR is controlled by an IR remote. Indicator turns red when controlled by a keyboard and purple when IR remote and keyboard are used at the same time.
- **HDD:** HDD indicator blinks red when data is being read from or written to HDD.
- **Modem:** Reserved
- **TX/RX:** TX/RX indicator blinks blue when network connection is functioning properly.
- **Guard:** Guard indicator turns blue when the device is armed, off when the device is unarmed. The arm/disarm state can be initiated by pressing and holding on the ESC button for more than 3 seconds in Preview mode.

**5. Alphanumeric Buttons:** Alphanumeric buttons used in various menus on the DVR. Some uses include:

- Switching to the corresponding channel in Preview or PTZ Control mode.
- Inputting numbers and characters in Edit mode.
- Switching between different channels in Playback mode.

**6. Control Buttons:**

- **ESC Button:** The ESC button is used to escape to the previous menu and to arm/disarm the DVR in Preview mode.
- **REC/SHOT Button:** The REC/SHOT button is used to enter the Manual Record interface. If used when controlling a PTZ, pressing the REC/SHOT button and then a Numeric button will call a PTZ preset.
- **PLAY/AUTO Button:** The PLAY/AUTO button is used to enter the Playback menu. It is also used to turn audio on/off in the Playback menu and auto scan in the PTZ Control menu.
- **ZOOM+ Button:** The ZOOM+ button is used to zoom the PTZ camera in when in the PTZ Control menu.
- **A/FOCUS+ Button:** The A/FOCUS+ button is used to adjust focus in the PTZ Control menu. It is also used to switch between input methods (upper and lowercase alphabet, symbols and numeric input). It can also be used to clear entire masked areas e.g the Motion Detection and Privacy Mask menus.
- **EDIT/IRIS+ Button:** The EDIT/IRIS+ button is used to edit text fields. When editing, it will also function as a Backspace button to delete the character in front of the cursor. In checkbox fields, pressing the EDIT/IRIS+ button will *tick* the checkbox. In PTZ Control mode, the EDIT/IRIS+ button opens up the iris of the camera. In Playback mode, it can be used to generate video clips for backup.
- **MENU/WIPER Button:** Pressing the MENU/WIPER button will return the user to the Main menu (after successful login). Pressing and holding the button for 5 seconds will turn off audible key beep. The MENU/WIPER button will also bring up sensitivity Interface settings. In PTZ Control mode, the MENU/WIPER button will start wiper (if applicable).
- **F1/LIGHT Button:** The F1/LIGHT button when used in a list field will select all items on the list. In PTZ Control mode, it will turn on/off PTZ light.
- **F2/AUX Button:** The F2/AUX button is used to cycle through tab pages. It will also bring up the channel & OSD position settings.
- **MAIN/SPOT/ZOOM- Button:** The MAIN/SPOT/ZOOM- button is used to switch between main and spot output. In PTZ Control mode, it can be used to zoom the camera out.
- **PREV/FOCUS- Button:** The PREV/FOCUS- button is used to switch between single screen and multi-screen mode. In PTZ Control mode, it is used to adjust the focus in conjunction with the A/FOCUS+ button. It can also be used to select entire masked areas, such as in Motion Detection and Privacy Mask menus.
- **PTZ/IRIS- Button:** The PTZ/IRIS- button is used to enter the PTZ Control mode. When in the PTZ Control mode, it is used to close the iris of the PTZ camera.

## 7. DIRECTION/ENTER Buttons:

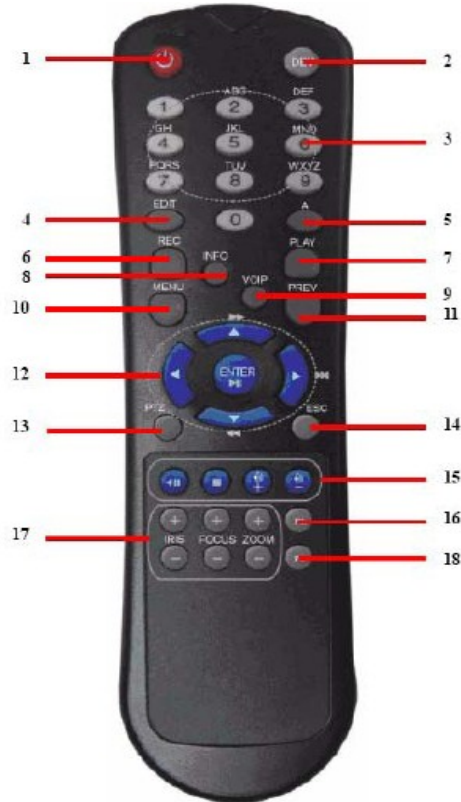
- **DIRECTION Buttons:** The DIRECTION buttons are used to navigate between different fields and items in menus. In Playback mode, the Up and Down button is used to speed up and slow down recorded video. The Left and Right button will select the next and previous day of recordings. In Preview mode, these buttons can be used to cycle through channels.
- **ENTER Button:** The ENTER button is used to confirm selection in any of the menu modes. It can also be used to *tick* checkbox fields. In Playback mode, it can be used to play or pause the video. In Single Play mode, pressing the ENTER button will advance the video by a single frame.

**8. JOG SHUTTLE Control:** The JOG SHUTTLE control can be used to move the active selection in a menu. The inner ring will move the selection up and down; the outer ring will move it left and right. In the Playback mode, the inner ring is used to jump 30 seconds forward/backward in a video. The inner ring can be used to speed up/slow down the video. The outer ring can be used to speed up/slow down the video. In Preview mode, it can be used to cycle through different channels.

**Note:** If GUARD indicator is blue (default), all alarm event and exception settings are valid. Otherwise, alarm event and exception settings will be invalid, but normal recording will still be available. It is important to note that you must click the EDIT button on either the remote or front panel in a text field before you're able to edit its content. After entering text, you must hit the ENTER button to be able to move on to the next field.

## 1.4 Using the Infra Red controller

The remote controller requires 2 x AAA batteries. Ensure that they are fitted with correct polarity.



The keys on the remote control closely resemble the ones found on the front panel. Referring to Figure 5, they include:

1. **POWER Button:** Same as POWER button on front panel.
2. **DEV Button:** Enables/Disables Remote Control.
3. **Alphanumeric Buttons:** Same as Alphanumeric buttons on front panel.
4. **EDIT Button:** Same as EDIT/IRIS+ button on front panel.
5. **A Button:** Same as A/FOCUS+ button on front panel.
6. **REC Button:** Same as REC/SHOT button on front panel.
7. **PLAY Button:** Same as PLAY/AUTO button on front panel.
8. **INFO Button:** Same as ZOOM+ button on front panel.
9. **VOIP Button:** Same as MAIN/SPOT/ZOOM- button on front panel.
10. **MENU Button:** Same as MENU/WIPER button on front panel.
11. **PREV Button:** Same as PREV/FOCUS- button on front panel.
12. **DIRECTION/ENTER Buttons:** Same as DIRECTION/ENTER buttons on front panel.
13. **PTZ Button:** Same as PTZ/IRIS- button on front panel.
14. **ESC Button:** Same as ESC button on front panel.
15. **RESERVED:** Reserved.
16. **F1 Button:** Same as F1/LIGHT button on front panel.
17. **PTZ CONTROL Buttons:** Buttons to adjust the iris, focus and zoom of a PTZ camera.
18. **F2 Button:** Same as F2/AUX button on front panel.

#### **1.4.1 If the remote controller does not operate the DVR**

Aim the remote control at the IR receiver located at the front of the unit to test operation. If there is no response:

1. Using the front control panel or the mouse, go into Menu > Settings > General > More Settings.
2. Check and remember DVR ID number. The default ID number is 255. This ID number is valid for all IR controls.
3. Press the DEV button on the remote.
4. Enter the DVR ID number from step 2.
5. Press the ENTER button on the remote.

If the Status indicator on the front panel turns blue, the remote control is operating properly. If the Status indicator does not turn blue and there is still no response from the remote, please check the following:

1. Batteries are installed correctly and the polarities of the batteries are not reversed.
2. Batteries are fresh and not discharged.
3. IR receiver in DVR is not obstructed.

#### **1.5 Using a USB Mouse**

A regular 3-button (Left/Right/Scroll-wheel) USB mouse can also be used with this DVR. To use a USB mouse:

1. Plug USB mouse into one of the USB ports on the front panel of the DVR.
2. The mouse should automatically be detected. If in a rare case that the mouse is not detected, please refer to the recommended device list from your provider.

The buttons on the mouse corresponds to:

##### **1. Left Button:**

- **Single-Click:** Select a component of a menu, such as a button or an input field. This is similar to pressing the ENTER button on the remote/front panel controls.
- **Double-Click:** Switch between single screen and multi-screen mode in Preview/Playback mode.
- **Click and Drag:** Clicking and dragging the Left mouse button can be used to control the pan/tilt of a PTZ camera as well as to vary the position of digital zoom area and camera OSD. It can also be used to setup the alarm areas.

##### **2. Right Button:**

- **Single-Click:** Shows pop-up menu.

##### **3. Scroll-Wheel:**

- **Scroll Up:** In Preview mode, scrolling up will switch to the previous screen. In Menu mode, it will move the selection to the previous item.
- **Scroll Down:** In Preview mode, scrolling down will switch to the next screen. In Menu mode, it will move the selection to the next item.

## 1.6 Using the Soft Keyboard

When a mouse is used to perform a task on the DVR, clicking on a text input field will bring up the Soft Keyboard, shown below.



The buttons on the soft keyboard represents:



**Lowercase:** Designates lowercase input is being used.



**Uppercase:** Designates uppercase input is being used.



**Switch to Lowercase:** Switch to lowercase input.



**Switch to Uppercase:** Switch to uppercase input.



**Number:** Designates number input is being used.



**Symbols:** Switch to symbols input.



**Backspace:** Delete the character in front of the cursor.

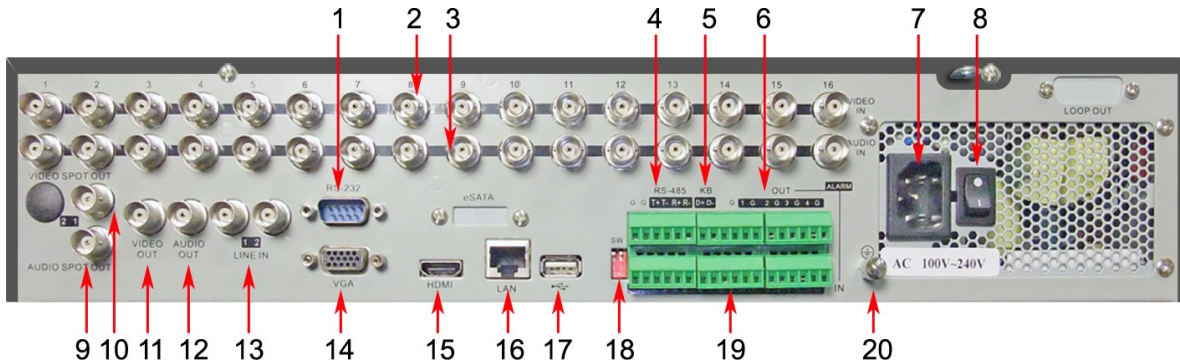


**Enter:** Confirm selection.



**ESC:** Exit out of Soft Keyboard.

## 1.7 Rear Panel Diagram



No	Description	Function
1	RS232	Connection for RS232 devices
2	Video In	BNC connectors for analogue video input
3	Audio In	BNC connectors for analogue audio input
4	RS485 interface	Connection for RS485 devices. Connect to T+ and T-
5	Controller port	D+, D- connect to Ta, Tb pins on controller. For cascading devices the first DVRs D+, D- pins should be connected to the D+, D- pins on the next DVR.
6	Alarm Out	Connections for alarm output (4 channels)
7	Power Input	AC 110v ~ 220v
8	Power Switch	On / Off power switch
9	Audio Spot Out	BNC connector for audio output. If VGA is connected, audio is synchronised with VGA. If not audio is synchronised with Video Spot Out.
10	Video Spot Out	BNC connector for monitor. If VGA is connected, interface is for video output only. If VGA is not connected, interface is for video output, playback and showing PTZ controls.
11	Video Out	BNC connector for video out. If VGA is connected, the interface is used for spot output only with local video display, playback, recording and PTZ controls. If VGA is not connected, the interface is used as the main video output with local video display and menu operations.
12	Audio Out	BNC connector for audio output. This connection is synchronised with Video out.
13	Line In	BNC connection for audio input
14	VGA	DB9 connection for VGA output. Display local video output and menu.
15	HDMI	HDMI video output connector
16	LAN interface	Connection for LAN (Local Area Network)
17	USB interface	Connection for USB devices
18	Termination Switch	RS485 termination switch. Switch down to terminate.
19	Alarm In	Connections for alarm input (up to 16 channels)
20	Ground	Ground needs to be connected when DVR starts up
	<i>Loop Out (Optional)</i>	<i>DB15 connection for video matrix and monitor</i>
	<i>eSATA (Optional)</i>	<i>Connects external SATA HDD, CD/DVD-RM or disk array</i>



## 2. Getting Started

### 2.1 Starting and Shutting down the DVR

Proper startup and shutdown procedures are crucial to extending the life of your DVR. To startup your DVR:

1. Ensure the power supply is plugged into an electrical outlet. It is HIGHLY recommended that an Uninterruptible Power Supply (UPS) be used in conjunction with the unit. The Power indicator LED on the front panel should turn red, indicating the unit is receiving power.
2. Press the POWER button on the front panel. The Power indicator LED should turn blue. The unit will begin to start.
3. After startup, the Power indicator LED will remain blue. A splash screen with the status of the DSP and HDD will be shown. The first row of icons at the bottom of the screen shows the DSP status. If an 'X' is shown on top of an icon, it means that the DSP initialisation has failed. The second row of icons at the bottom of the screen will show the HDD status. If an 'X' is shown, it means that the HDD is not installed or cannot be detected.

There are two proper ways to shutdown the DVR. To shutdown the DVR:

#### • OPTION 1: Standard Shutdown

1

1. Enter the Shutdown menu, shown below by clicking on Menu > Shutdown.



2. Select the Shutdown button.
3. Click the Yes button.

#### • OPTION 2: Manual Shutdown

1. Press and hold the POWER button for 3 seconds.

2. Enter the administrator's username and password in the dialogue box for authentication.
3. Click the Yes button.

**Note:** Do not press the POWER button again when the system is shutting down.

## 2.2 Rebooting and Locking Your DVR

While in the Shutdown menu (see 2.1 diagram), you may also reboot or lock your DVR. Locking your DVR will return you to the Live Preview mode, which will require a user name and password to exit out of it. The Reboot button will reboot your DVR.

To reboot or lock your DVR:

1. Enter the Shutdown menu by clicking Menu > Shutdown.
2. Select the Lock button to lock the DVR or the Reboot button to reboot the DVR.

## 2.3 Using the Setup Wizard

By default, the Setup Wizard will start once the DVR has loaded, as shown in Figure 2. The Setup Wizard will walk you through some of the more important settings of your DVR. If you do not wish to use the Setup Wizard at this time, click the Cancel button. You may also choose to use the Setup Wizard at a later time by leaving the “**Start Wizard when DVR starts?**” checkbox checked.



To start using the Setup Wizard:

1. Click the Next button on the Wizard window. This will take you to the **User Permission** window, shown below.



2. Navigate to the **Admin Password** input field.
3. Enter the admin password into the **Admin Password** input field. By default, the password is 12345.
4. To change the admin password, check the **New Admin Password** checkbox. Enter the new password and confirm the password in the given fields
5. Click the Next button. This will take you to the Time Settings window shown below.



6. After the time settings, click the OK button, which will take you back to the Setup Wizard window.
7. Click the Next button. This will take you to the **HDD Management** window, shown below.



8. To start HDD management, click the Enter button.

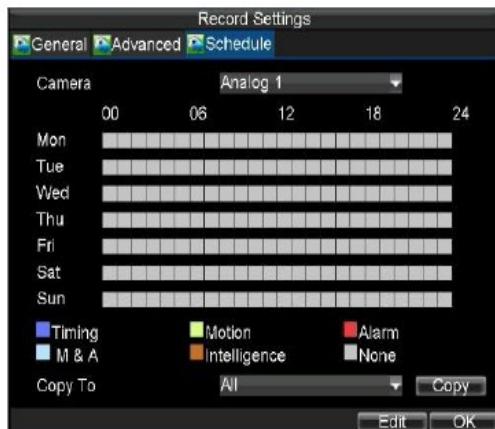


0

9. If a new HDD was recently installed, select the HDD from the list to initialise it. Initialising the HDD will format and remove all data from it.
10. After the HDD has been initialised, click the OK button, which will take you back to the Setup Wizard window.
11. Click the Next button. This will take you to the **Record Settings** window, as shown below.
12. To enter the **Record Settings** window, click the Enter button.



13. Select the **Schedule** tab



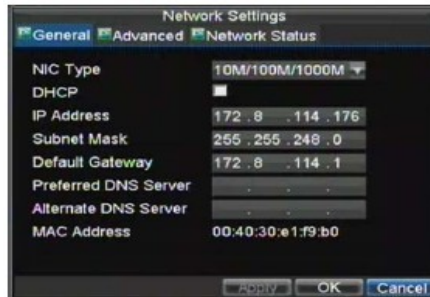
14. Click the Edit button. This will open up a new recording schedule.
15. Check both the **Enable Schedule** and **All Day** checkbox. This will enable the recording schedule and have it record continuously all day.

16. Click the OK button. This will take you back to the **Schedule** tab. To copy the schedule to a different channel, select the channel or all under **Copy To** and click the Copy button.

17. Click the Next button. This will take you to the **Network Settings** window.



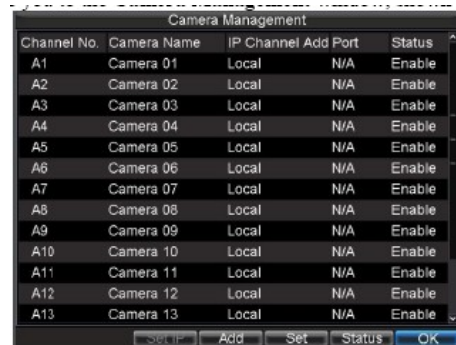
18. To configure network settings, click the Enter button.



19. Enter the **IP Address**, **Subnet Mask** and **Default Gateway**.

20. Click the OK button to return to the Setup Wizard.

21. Click the Next button. This will take you the Camera Management window shown below.



22. Select Add to add IP camera and click OK to return to Setup Wizard and click Done.

## 3. Live Preview

### 3.1 Watching a Live Preview

The Live Preview mode is automatically started after the DVR boots up. It is also at the very top of the menu hierarchy, thus hitting the ESC multiple times (depending on which menu you're on) will bring you to the Live Preview mode.

#### 3.1.1 Description of Live Preview Icons

There are multiple icons on each display in Live Preview mode to indicate different camera status. These icons include:



**Event Icon:** Indicates video loss or tampering, motion detection and/or sensor alarm.



**Record Icon:** Indicates the current channel is recording. The recording may have been started manually, from a schedule, and/or triggered from motion or alarm.



**Main Icon:** Indicates the current channel is in the main output mode.



**Aux Icon:** Indicates the current channel is in the aux output mode.



**Spot Icon:** Indicates the current channel is in the spot output mode.



**Alarm Icon:** Indicates there is an alarm or exception.

**Note:** Status for video loss is only valid for analogue cameras. Event icons will only be displayed when armed, except for the video loss alarm. Output icon is only valid when enabled in **General** menu.

### 3.2 Operating Live Preview

In Live Preview mode, you can:

#### 1. Display Single Camera:

- **Using Front Panel/Remote:** Use Alphanumeric buttons.
- **Using Mouse:** Select Single Camera in right-click menu.

#### 2. Preview Layout Switch:

- **Using Front Panel/Remote:** Click PREV button.
- **Using Mouse:** Select Multi-Camera in right-click menu.

#### 3. Manual Switch:

- **Using Front Panel/ Remote:** To move to the previous screen, click the Left direction button. To move to the next screen, click the Right direction button.
- **Using Mouse:** Select Next screen in right-click menu.

#### 4. Auto Switch:

- **Using Front Panel/Remote:** Click ENTER button.
- **Using Mouse:** Select Start Sequence in right-click menu.

#### 5. Digital Zoom:

- **Using Mouse:** Select Digital Zoom in right-click menu.

#### 6. Switch between Main and Aux Output:

- **Using Front Panel/Remote:** Click MAIN/AUX button.
- **Using Mouse:** Select Aux Monitor/Main Monitor in right-click menu.

### 3.2.1 Using the Mouse in Live Preview

Many features of the Live Preview can be quickly accessed by clicking the right-button of the mouse. These features include:

- **Single Camera:** Switch to a full screen display of the selected camera. Camera can be selected from a drop down list.
- **Multi-Camera:** Switch between different display layout options. Layout options can be selected from a drop down list.
- **Next Screen:** When displaying less than the maximum number of cameras in Live Preview, clicking this feature will switch to the next set of displays.
- **Playback:** Enter into Playback mode.
- **PTZ:** Enter PTZ Control mode.
- **Digital Zoom:** Enter Digital Zoom interface.
- **Reboot Intelligent:** When amending this option a reboot of the intelligent library may be needed.
- **Menu:** Enter Main menu.
- **Start Auto-switch:** Enable sequencing in Live Preview mode.
- **Aux Monitor:** Enter Aux operation mode.



**Note:** The dwell time of the preview configuration should be set before using **Start Auto-switch**. Also if you enter Aux monitor mode and the Aux monitor is not connected, switch back to the Main output with the MAIN/AUX button on the front panel or remote.

### 3.2.2 Using Digital Zoom

To use digital Zoom in Live Preview mode:

- 1      **1.** Right-click using the mouse in Live Preview mode.
- 2      **2.** Select Digital Zoom from Mouse menu.
- 0      **3.** Left-click and drag the red box to the desired area for zoom. The zoomed
- 1      image will be magnified by 4x. A sample of this can be seen below.



### 3.2.3 Using an Aux Monitor

Certain features in the Live Preview are also available when using the Aux monitor. These features include:

- **Single Camera:** Switch to a full screen display of the selected camera. Camera can be selected from a drop down list.
- **Multi-Camera:** Switch between different display layout options. Layout options can be selected from a drop down list.
- **Next Screen:** When displaying less than the maximum number of cameras in Live Preview, clicking this feature will switch to the next set of displays.
- **Playback:** Enter Playback mode.
- **PTZ:** Enter PTZ Control mode.
- **Main Monitor:** Enter Main operation mode.

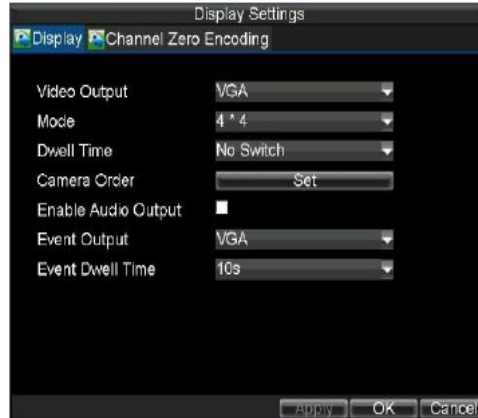


**Note:** Main menu operation's not available while in Aux monitor mode.



### 3.3 Configuring Live Preview Displays

Live Preview displays can be customized to your own needs. These settings can be accessed by entering the Display Settings menu.



To access the Display Settings menu:

1. Click the MENU button.
2. Click the Setting icon.
3. Click the Display icon.
4. Select Display Tab.

The settings available in this menu include:

- **Video Output:** Designates the output to configure the settings for. Outputs include VGA, Main and Aux composite video (CVBS).
- **Mode:** Designates the display mode to be use for Live Preview.
- **Dwell Time:** The time in seconds to *dwell* between switching of channels when **Start Sequence** is selected in Live Preview.
- **Camera Order:** The order of the cameras to be used in the selected display mode (See *Setting Camera Order*).
- **Enable Audio Output:** Enables/disable audio output for the selected video output.
- **Event Output:** Designates the output to show event video on.
- **Event Dwell Time:** The time in seconds to show event screen.

**Note 1:** This DVR will automatically detect if an HDMI monitor or VGA monitor is connected. Only HDMI monitor can be activated if both HDMI and VGA ports are connected.

**Note 2:** When an HDMI display is connected to the DVR, it will become the main output. All the Live Preview operations will be available. Main video (VIDEO OUT) is set as Aux control output, which supports PTZ Control, Playback, and Preview mode on it. The main audio (AUDIO OUT) is tied to the main video (VIDEO OUT), while Aux audio (AUDIO SPOT OUT) is tied to the HDMI video output.

**Note 3:** When a VGA display is connected to the DVR, the VGA monitor will become the main output. All the Live Preview operations will be available. Main video (VIDEO OUT) is set as Aux control output, which supports PTZ Control, Playback, and Preview mode on it. Aux video (VIDEO SPOT OUT) only allows Preview depending on configuration. The main audio (AUDIO OUT) is tied to the main video (VIDEO OUT), while Aux audio (AUDIO SPOT OUT) is tied to the VGA video output.

**Note 4:** When neither the HDMI or VGA monitor is not connected to the DVR, all the Live Preview operations will then become available to the main video output. The VIDEO SPOT OUT will be the Aux control output. Main audio will still be tied to main video while Aux audio will be tied to Aux CVBS video (VIDEO SPOT OUT).

**Note 5:** When the resolution of video output is set as the highest one, the intelligent and zero channel encoding features will be not be available anymore.

### 3.3.1 Setting Camera Order

Setting the camera order allows you to logically position cameras for more efficient monitoring in your own individual location.



To set the camera order:

- 1      1. Enter the Display Settings menu (Menu > Setting > Display).
- 2
- 3      2. Click the Set button.
- 4
- 0      3. Select the display Mode i.e 4 x 4, 3 x 3, 2 x 2 or 1 x 1 for camera order.
- 1
- 2      4. Using the up and down button at each display, select the camera you would
- 3          like to set. Setting an 'X' will mean the camera will not be displayed.
- 4
- 5      5. Click the OK button.

### 3.3.2 Channel Zero Encoding

Sometimes the user needs to remotely view a number of cameras simultaneously through the web browser or client software on limited broadband resource. The Channel Zero feature allows a number of different channels using various display formats to be viewed (the Channel Zero feature is a mirror image of the Main CVBS output settings) within one channel display area using minimal networking resources. The Channel Zero Encoding feature supports this option.

The following steps will detail how this function is setup.

1. Enter the Display Settings menu and select Channel Zero Encoding tab, shown below.



**Note:** Channel Zero does not support substream; only mainstream is available.

2. Enable Channel Zero Encoding by clicking on check box.
3. Set a frame rate bearing in mind that this option is primarily for networking over a low resource Broadband. Recommend low frame rate e.g 1FPS.
4. Set maximum bit rate. Again set low value e.g 96Kbps.
5. Configure the Main CVBS settings to reflect required display settings, as this will be the Channel Zero display in client software or web browser.

#### Client Software

6. Add an extra channel on DVR setup to show Zero Channel e.g 5 channels on a 4 channel DVR.

## 4. Record Settings

### 4.1 Configuring Settings for Recording

There are multiple ways to setup your DVR for recording. They include setting up a recording schedule, triggering a recording by motion detection and/or a sensor alarm, and manually starting the recording.

#### 4.1.1 Initialising Record Settings

Before setting your DVR up for recording, certain settings should be configured first. The steps for configuring these settings are:

1. If you have not initialised a HDD either through the Setup Wizard or through HDD management, you must do so before proceeding.
2. Navigate to Menu > Setting > Record. You will be taken to the Record Settings menu as shown below.

3. Select the camera you would like to configure the settings for.
4. Configure settings for:

- **Encoding Parameters:** Select Normal for 24 x7 recording, Event for Motion or Alarm, or Substream.
- **Stream Type:** Type of stream to record, either Video or Video & Audio.
- **Resolution:** Select the resolution of the recording.



The options include 4CIF, DCIF, 2CIF, CIF, and QCIF.

- **Bit Rate Type:** Select either Variable or Constant bit rate.
- **Video Quality:** Select the quality to record cameras at.
- **Frame Rate:** Select frame rate.
- **Max Bit Rate:** Select or define custom maximum bit rate for recordings.

5. Click the Set button under **More Settings**. This will bring up another menu with more advance recording options as shown to the right.



6. Set additional record settings:
  - **Pre-Record:** Sets the time in seconds to pre-record before the actual recording begins.
  - **Post-Record:** Sets the time in seconds to post-record after the actual recording has ended.

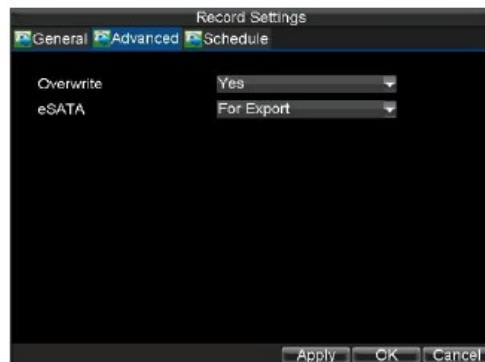
- **Recording Expired Time:** Sets the expiration time in days for recorded video. Recordings after expiration time would be deleted. If it is set to '0,' the option would be disabled.
- **Redundantly Record:** Select to enable or disable redundant recording on the particular channel.
- **Record Audio:** Select to record audio or not.

7. Click the OK button to finish and return to the previous menu.

8. Select the **Advanced** tab, this will open the Advanced settings menu.

9. Enable or disable the **Overwrite** setting. Enabling the **Overwrite** setting will cause recorded files to be overwritten once the HDD is full.

10. Click Apply and then the OK button.



#### 4.1.2 Scheduling a Recording

Scheduling a recording allows you to setup the DVR to only record when you want it to. To setup a recording schedule:

1. Enter the Record Settings menu (Menu > Setting > Record).
2. Select the **Schedule** tab to open the Schedule menu as shown below.



3. Select Camera to edit schedule.

4. Click the Edit button.

5. Click and check **Enable Schedule**.

6. Select the day you would like to setup the schedule for or select All Week to record the entire week.
7. Select to record the entire day by clicking **All Day** or at different time periods. Up to 8 time periods can be scheduled. It is important to note that time periods must be consecutive and must not overlap.
8. Select recording **Type**. Recording type can be based on time and triggered by motion detection and/or alarm. Motion detected and alarm triggered recordings are further explained in **Configuring Alarms**.
9. Click the OK button to finish configuration.
10. Repeat steps 3-9 for other cameras or copy settings from one schedule to the next under the **Copy To** section.
11. Click OK to finish and save the schedule settings.

**Note:** **Event** encoding parameters take effect when motion detection or alarms are triggered. **Normal** encoding parameters take effect without any events triggering.

### 4.1.3 Starting a Manual Recording

A manual recording can be started at any time. To start a manual recording:

1. Press the REC/SHOT button on the front panel or in the Main menu to bring up the Manual Record menu shown to the right.
2. Start manual recording by selecting On or Off for the cameras desired.



## 4.2 Protecting Recorded Files

There are two methods to prevent recorded files from being deleted off the HDD. It's highly recommended that important recorded events be protected from deletion. Recorded files can either be **locked** or the HDD that the files reside on can be set to **read only**.

### 4.2.1 Locking and Unlocking Recorded Files

To lock or unlock a recorded file:

1. Enter the Video Search menu by navigating to Menu > Video Search. The Video Search menu is shown below.



- 1 2. Search for desired recording by entering search parameters. Search parameters include Camera number, Video/File Type and Start/End Time.
- 1 3. Click the Search button. A list of recordings (example below), matching the search parameters will be displayed.

Cam	HDD	Start Time	Stop Time	Size	Play	Lock
A1	5	2010-06-10 11:12:08	12:24:47	228,032KB	🔍	🔒
A1	5	2010-06-10 12:24:47	13:08:43	137,584KB	🔍	🔒
A1	5	2010-06-10 13:10:14	13:49:34	121,920KB	🔍	🔒
A1	5	2010-06-10 13:49:34	16:13:32	259,345KB	🔍	🔒
A1	5	2010-06-10 16:13:32	16:37:32	259,502KB	🔍	🔒
A1	5	2010-06-10 16:37:32	16:43:29	18,388KB	🔍	🔒
A2	5	2010-06-10 11:12:10	11:12:26	3,855KB	🔍	🔒
A2	5	2010-06-10 11:12:41	11:13:25	9,887KB	🔍	🔒
A2	5	2010-06-10 11:13:44	11:13:56	3,922KB	🔍	🔒
A2	5	2010-06-10 11:14:06	11:14:18	4,031KB	🔍	🔒
A2	5	2010-06-10 11:14:27	11:15:19	11,254KB	🔍	🔒
A2	5	2010-06-10 11:15:28	11:15:40	3,826KB	🔍	🔒
A2	5	2010-06-10 11:15:50	11:16:02	3,859KB	🔍	🔒

Total Size: 5.84GB

- 2 4. Select the file you would like to lock/unlock.
- 3 5. Click on the Lock button to lock file. If the file is already locked, click on the lock button to unlock file. Locked files will be shown with a closed lock while unlocked files with an open lock.
- 4 6. Click Cancel to exit out of the Video Search menu.
- 5

#### 4.2.2 Setting HDD to Read-Only

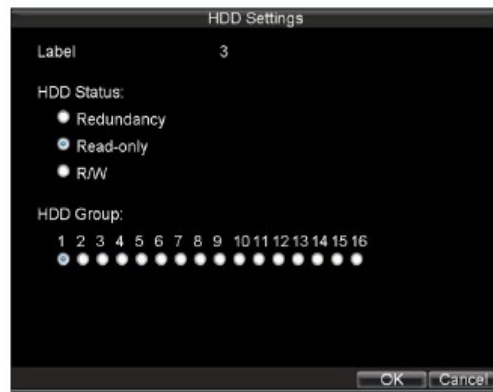
To set a HDD to read-only:

1. Navigate to the HDD Management menu by going to Menu > HDD Management.

Label	Capacity	Status	Property	Type	Free Space	Group
5	931.51GB	Normal	R/W	Local	896GB	1

2. Select the **General** tab.
3. Select the HDD to set to read-only.
4. Click the Set button. This will take you to the HDD Settings menu shown below.

2



5. Set HDD to Read-Only.

6. Click the OK button. The HDD is now read-only.

**Note:** When an HDD is set to read-only, no more recordings can be written to the disk. In order to enable recordings on that particular disk again, you must set the HDD to R/W (Read/ Write) in the HDD Property Settings menu. If multiple HDDs are used, the DVR will automatically record to the next HDD that is not set to read-only.

## 4.3 Configuring Advanced HDD Settings

### 4.3.1 Setting up HDD Redundancy

To insure against unexpected failures of hard disk drives, it's recommended to set up HDD redundancy. It is important to note that in order to set up HDD redundancy, you'll need more than one HDD in your DVR.

To set up HDD redundancy:

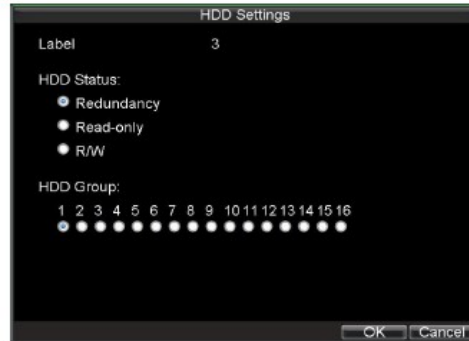
1. Navigate to the HDD Management menu by clicking Menu > HDD management.
2. Click on the **General** tab.
3. Select the HDD to be used for redundancy, as shown below.



4. Click the Set button. This will take you to the HDD Settings menu.



5. Set **HDD Status** to Redundancy. Verify at least one other HDD is set to R/W (read/write).
6. Click the **OK** button to save settings and return to the previous menu.



7. Navigate to the Record Settings menu by clicking **Menu > Setting > Record Setting**.
8. Click on the **General** tab.
9. Select the **Camera** to be used for redundancy.
10. Next to **More Settings**, click on the **Set** button. This will bring up additional settings for the selected camera as below.



11. Set **Redundantly Record** to **Yes**.
12. Click the **OK** button to save settings.
13. Repeat steps 8-12 for other cameras you would like to redundantly record.

## 5. Playback

### 5.1 Playing Back a Recording

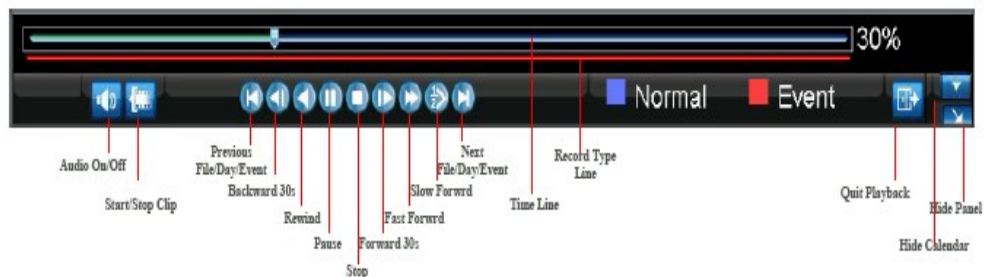
You must first search for recordings to play them back. There are multiple ways to search for recordings, including searching for them by time, by channel, by file type and by log.

#### 5.1.1 Understanding the Playback Interface

There are various controls in the Playback interface that make viewing recordings more efficient. A screenshot of the Playback interface is shown below.



The Playback Control Panel contains the various controls on the Playback interface.



**Note:** A blue Record Time Line designates schedule/manual recording while a red one shows event recordings.

## 5.2 Playing Back from a Video Search

To playback files from a video search:

1. Enter into the Video Search menu by clicking Menu > Video Search.
2. Set the search parameters by selecting cameras to search, video/file type and the start/end time (as shown below).



3. Click the Play button to start playback of all the files found with the specified search criteria or click the Search button to bring up the list of search results. After search results are presented, press Play icon to enter multi-channel playback camera selection.



4. When pressing OK recordings will automatically play back in the Playback Interface.



## 5.3 Playing Back from Event Search

To playback files from a video event search:

1. Enter into the Event Search menu by clicking Menu > Event Search
2. Set the search parameters by selecting event type to search, alarm input/ channel and the start/end time.



3. Click the Search button to start bring up the list of search results. After search results are presented, you can press play icon to playback the selected event.



## 5.4 Playing Back from Live Preview

You may also instantly playback from a channel while watching a Live Preview. The playback will be of recordings from the past 5 minutes.

To playback from a channel instantly in Live Preview:

• **Using a Mouse:**

1. Right-click the mouse on desired channel and select the Playback button.
2. Recordings from the selected channel will start playing back in the Playback interface. An **Attention** message will appear if there is no recording found in the

previous 5 minutes. You may also press the Play button to view the day's recordings for the selected channel.

- 3 **3.** You may also select additional channels for playback from the channel list on the right hand side of the Playback interface, as shown below.



**• Using the Front Panel/Remote:**

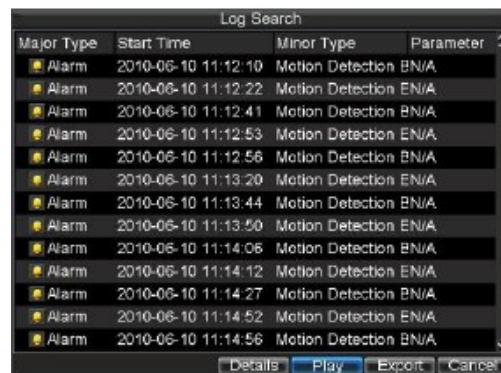
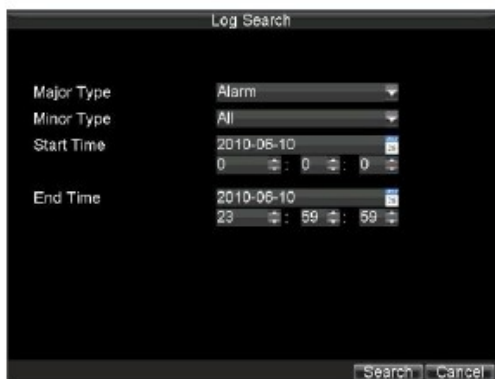
- 1 **1.** Press the PLAY button. This will take you into the Playback interface.
- 2 **2.** Enter the channel you would like to watch recordings for on the front panel or remote (i.e. press '11' for channel 11).
- 3 **3.** Recordings will begin for the selected channel.

**5.5 Playing Back from System Log**

You may also playback recordings from the System Log.

To playback video from the System Log:

- 1 **1.** Enter the Log Search menu by clicking Menu > Maintenance > Log Search



- 1     **2. Set Start Time and End Time.**
- 2     **3. Click the Search button.**
- 0     **4. A list of results with your search criteria will be returned. Select the video**
- 1         log to playback and click Play. An Attention message will be displayed if there
- 2         is no video associated with the log.
- 3     **5. The recording will begin to play in the Playback interface.**

## 5.6 Playing Back Frame-by-Frame

To playback frame-by-frame in the Playback interface:

### • Using a Mouse:

- 1     **1. Click the Slow Forward button on the Playback Control Panel until the**
- 2         speed changes to **Single** frame.
- 3     **2. Click the Pause button to advance the video frame by frame.**

### • Using the Front Panel/Remote:

- 1     **1. Rotate the inner control on Jog Shuttle counterclockwise or press the Down**
- 2         button to set the play to **Single** frame.
- 3     **2. Press the OK button.**
- 4     **3. Press the Enter button to advance the video frame by frame.**

## 5.7 Smart Search

In order to locate a motion detection event easily and accurately in the playback progress line, users are allowed to analyse a certain area (scene) dynamically, and to get all of the related motion detection events that occurred in this area.

**Note:** The smart search function is only available for analogue channels. To use dynamic analysis function:

- 1     1. Go to playback interface and play the video
- 2     2. Right-click mouse and select Dynamic Analysis to go to analysis area selection interface
- 3     3. You can left-click the mouse and drag an area for motion detection analysis, then right-click mouse for display menu shown below.



- 1 4. Before selecting Analyze to start analysis, you also can select full-screen detection, configure the sensitivity level, etc.
- 1 5. You will go to playback interface with the result of smart search, which is indicated by green line clips in the recording time line.



- 1 6. Right-click mouse after playback and you will find menu display shown below.



You can select Dynamic Analysis to re-drag the analysis area and to re-analyse it; on the other hand, you can select Previous Dynamic to go to the previous event clip or Next Dynamic to go to the next event clip.

## 5.8 Using Digital Zoom

To use digital zoom in Playback mode:

- 1 1. Enter Digital Zoom mode by right-clicking with the mouse in Playback and
- 2 selecting Zoom.
- 0 2. Left-Click and drag red box for desired magnification area, as shown below.
- 1 The selected area will be zoomed to full screen.



## 6. Backup

### Backing up Recorded Files

Recorded files can be backed up to various devices, such as USB flash drives, USB HDDs or a DVD writer. You backup recorded files via the Video Search or Event Search menus.

#### 6.1 Exporting Files

To export recorded files:

1. Enter the Video Search menu (shown below) by clicking Menu > Video Search.
2. Search.



2. Select desired parameters to search for files to export.
3. Press the Search button. This will take you to the Search Results menu.
4. Select the files to export. You may also click the Play button to verify that these files are indeed the ones you would like to export.



5. The size of the currently selected files is displayed in the lower-left corner of the window. Select the Export button to enter the Export menu.



1



1

2

6. Select device to export to from drop-down list (USB Flash Drive, USB HDD, DVD Writer). If backup device is not recognised:

- Click the Refresh button.
- Reconnect device.
- Check for compatibility from vendor.

1

7. Click Start to begin backup process.



1

2

3

4

8. After the backup process has completed, you may select the files from your device and click the Play button to verify that it has been exported successfully.



**Note:** The Video Player software will be automatically copied to the media.

## 6.2 Exporting Event Search Files

To export recorded files via Event Search

1. Enter the Event Search menu by clicking Menu > Event Search



2. Set the search parameters by selecting event type to search, alarm input/channel and the start/end time, then click Search button and this will take you to the search results interface.



3. Select the files to export, you may also click the Play icon to verify that these files are indeed the ones you would like to export.
4. Press Export button to enter Export menu, then you can export the files following the steps 6 to 8 in section 6.1 above.

## 6.3 Exporting Video Clips

You may also select video clips to export directly during Playback. A maximum of 30 clips can be selected for each channel.

To export video clips during Playback:

- **Using the Mouse:**

1. Enter into the Playback interface (See **Playing Back a Recording**).

2  
3  
4  
5  
6  
7

2. Using the Clip Start/Stop button in the Playback Control Panel, select the start and end of the video clip during playback.
3. Repeat for additional clips.
4. Click the Quit Playback button to exit from the Playback interface. You'll then be prompted to save the clips as shown below.



1  
2

5. Click Yes to enter Backup interface or No to exit Playback interface.
6. At the Backup interface, select the Start button to begin the Backup process.

• **Using the Front Panel / Remote:**

0  
1  
2  
3  
4  
5  
0  
1  
1

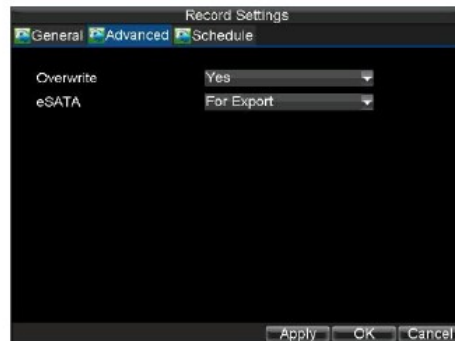
1. Enter into the Playback interface (See **Playing Back a Recording**).
2. During playback, press the EDIT button to mark start of clip.
3. Press the EDIT button again to mark end of clip.
4. Repeat for additional clips.
5. Press the ESC button to exit from the Playback interface. You'll then be prompted to save the clips, as shown above.
6. Click the Yes button to enter Backup interface or select No to exit to Playback interface.
7. At the Backup interface, select the Start button to begin the Backup process.

## 6.4 Exporting Files via e-SATA (optional facility)

The e-SATA port on the rear panel can backup the recorded files by using an external SATA disk. To export recorded files via e-SATA:

1  
2

1. Enter the Record Settings menu by clicking Menu > Settings > Record
2. Click Advanced tab, it will take you to the e-SATA property configuration, as shown. Select **For Export** option in the drop-down list, the DVR will ask for reboot to take effect.



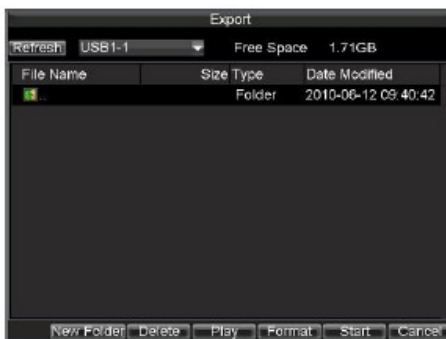
- 1 **3.** You may go to recorded files export interface following the above explanation in section Exporting Files or Exporting Video Clips. The Export menu appears as shown below.



- 1 **4.** Select a partition in the drop-down list, then you may click Start to start exporting. Wait until the backup process completes.

## 6.5 Managing Backup Devices

To manage backup devices, you must first be in the Export menu. The Export menu can be accessed by following the steps shown in the previous section (See **Exporting Files**).



Once in the Export menu, you may click on:

- **New Folder:** Creates a new folder on the export device.
- **Delete:** Delete a file or folder from the export device.
- **Play:** Play the selected video file from the export device.
- **Format:** Formats the export device.
- **Erase:** Erase files from a re-writable CD/DVD.

## 7. Alarm Settings

### 7.1 Configuring Alarms

#### 7.1.1 Setting up Motion Detection

Using motion detection recording will increase the number of days your DVR is able to record. It will only record relevant events rather than recording everything, making searching for an event much easier. To set up motion detection:

1. Enter Camera Management/Setting:

Enter the Camera Management interface, shown below by navigating to Menu > Setting > Camera.

Select the channel to configure motion detection on and click Set.



1

2. Select the **Advanced** tab to open up the Advanced Camera Settings menu, shown below.



3. Check the checkbox next to Motion Detection.

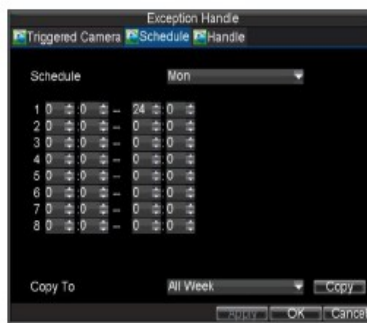
4. Click the Area Settings button to enter the Motion Detection area and Sensitivity configuration interface.
5. The Motion Detection area, shown below, allows you to mask areas where you would like motion to be detected. The maximum area is the whole screen. You can left click mouse, hold and drag it to mask the Motion Detection area. Using **EDIT** button and direction buttons also help to select Motion Detection area.



6. Right click mouse or press **MENU** button on the front panel to set the Motion Detection Sensitivity shown below. The higher the sensitivity value, the higher the sensitivity. In order to configure a proper sensitivity for the surveillance area, you may select Highlight On in the right-click menu, then all detected motion areas on the camera will be marked with red highlight colour.



7. Click OK to return to the Camera Settings menu.
8. Click the Handle button to open the Exception Handle menu, shown below. Select the Triggered Camera tab.



9. Select cameras to trigger for recording when motion is detected by checking the checkboxes under the desired cameras.

10. Select Schedule tab to set arm time, 8 periods can be set.

11. Click OK to complete motion settings for the selected camera.

You may now add a schedule to start recording when motion is detected (See **Scheduling a Recording**).

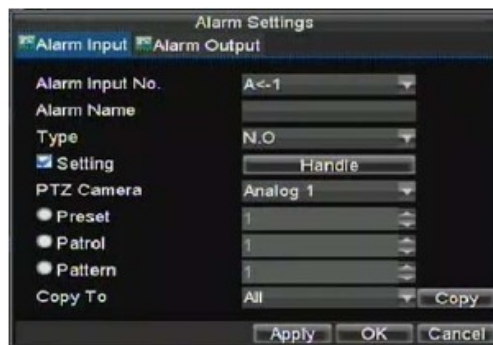
### 7.1.2 Setting up Sensor Alarms

Recordings can also be triggered from an external sensor alarm device. To setup sensor alarms:

1. Enter into the Alarm Management menu shown below.



2. Select the **Alarm Input number** and click the Set button. This will open the Alarm Input Setting menu, shown below.



3. Set the alarm input type. The options available are Normally Open (N.O.) and Normally Closed (N.C.).

4. Check the checkbox next to **Setting** and click the Handle button to enter the Alarm Input Handle menu.

5. Select the **Triggered Camera** tab.

6. Select cameras to trigger for recording when alarm occurs by checking the checkboxes under the desired cameras, as shown below.



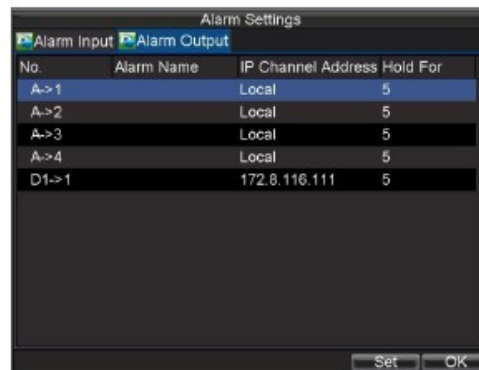
7. Click the OK button to complete setup.

You may now add a schedule to start recording when an alarm is triggered (See **Scheduling a Recording**).

Alarm outputs may also be configured in the Alarm Management menu.

To set up Alarm Output:

1. Select the **Alarm Output** tab. This will bring up the Alarm Output interface shown below.



2. Select the output you would like to configure and click the Set button. This will bring up the settings page for the selected channel.





3. Configure the settings for selected output.
4. Select OK to save and exit.

**Note:** If the **Hold For** option is selected as **Manually Stop**, the alarm will only stop when you manually stop it (See **Triggering Alarm Outputs Manually**).  
Triggering an IP camera will require the necessary permissions from the camera.

### 7.1.3 Triggering Alarm Outputs Manually

You may also trigger alarm outputs manually through the Manual Alarm menu. To trigger alarm outputs manually:

1. Enter the Manual Alarm menu by clicking Menu > Manual Alarm.



2. In the Manual Alarm menu, you may:
  - **Trigger:** Select an alarm from the list and click Trigger to trigger its output.
  - **Trigger All:** Trigger all alarm outputs at once.
  - **Clear All:** Stop all alarm outputs at once.
3. Select OK to return to the previous menu.

### 7.1.4 Detecting Video Loss

Your DVR can be setup to detect video loss and trigger an action. To setup video loss detection:

1. Enter Camera Management/Settings menu by clicking Menu > Setting > Camera.

- 1
- 2
- 3
- 4
- 5
- 6
- 7



2. Select camera under **Channel number** to configure video loss detection and click the Set button.

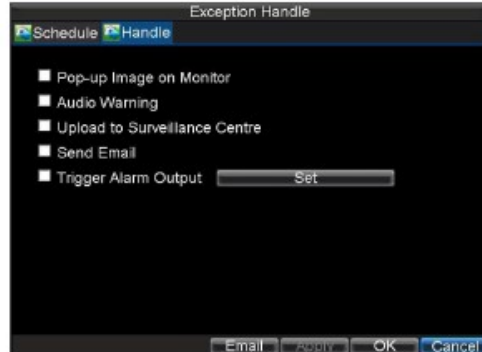
3. Select the **Advanced** tab.

4. Check the **Video Loss Detection** checkbox to enable.



5. Click the Handle button to enter the Exception Handle menu, shown below.

6. Select the **Handle** tab to configure exceptions handling. Exception trigger options are further explained in the next section (See **Understanding Exception Trigger Options**).



7. Select the **Schedule** tab. Set the schedule of when you want video loss detection to be enabled. Schedule can be set for all week or any day of the week with up to 8 time periods per day.

8. Click the Apply button to finish.

9. Repeat above for other channels.

### 7.1.5 Detecting Video Tampering

Video tampering (i.e. moving camera to a different position) can also be detected and set to trigger an action on your DVR. To setup video tampering detection:

1. Enter Camera Management/Settings menu by clicking Menu > Setting > Camera.



Channel No	Camera Name	IP Address	Port	Status
A1	Camera 01	Local	N/A	Enabl
A2	Camera 02	Local	N/A	Enabl
A3	Camera 03	Local	N/A	Enabl
A4	Camera 04	Local	N/A	Enabl
A5	Camera 05	Local	N/A	Enabl
A6	Camera 06	Local	N/A	Enabl
A7	Camera 07	Local	N/A	Enabl
A8	Camera 08	Local	N/A	Enabl
A9	Camera 09	Local	N/A	Enabl
A10	Camera 10	Local	N/A	Enabl
A11	Camera 11	Local	N/A	Enabl

2. Select camera under **Channel number** to configure video loss detection and click the Set button.

3. Select the **Advanced** tab.

4. Check the **Tamper Detection** checkbox, as shown below.

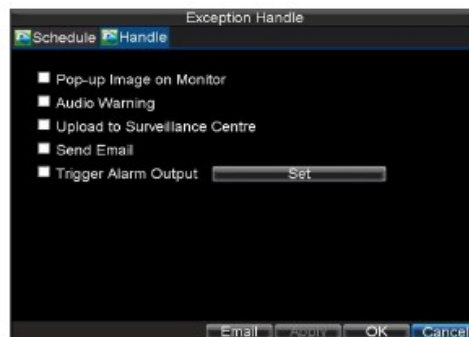


5. Click the Area Settings button to enter the area setup.

6. Setup tampering area, as shown below. Only one tampering area can be set, with the full screen being the maximum area.



7. Right click mouse to set detection sensitivity. There are three options, Low, Medium or High.
8. Click OK to return to the Camera Settings/Management menu.
9. Click the Handle button to enter the Exception Handle menu.
10. Select the **Handle** tab to configure exceptions handling. Exception trigger options are further explained in the next section (See **Understanding Exception Trigger Options**).



11. Select the **Schedule** tab. Set the schedule of when you want video loss detection to be enabled. Schedule can be set for all week or any day of the week with up to 8 time periods per day.
12. Click the Apply button to finish.
13. Repeat above for other channels.

## 7.2 Setting Exception

Setting exceptions allow the DVR to alert you when irregular events occur. These events include:

- **HDD Full:** All installed HDDs are full.
- **HDD Errors:** Errors occurred during writing of the HDD, no HDD installed or HDD has failed to initialise.
- **Network Disconnected:** Disconnected network cable.
- **IP Conflict:** Conflict in IP address setting.
- **Illegal Access:** Wrong user ID or password used.
- **Video Exception:** Unstable video signal detected.
- **Video Output Standard Mismatch:** I/O video standards do not match.
- **Abnormal Recording:** HDD not recording.

To set exceptions:

1. Enter the Exception menu by clicking Menu > Exception.
2. Select the exception to configure **Exception Type**.
3. Select triggering options, as shown below. Trigger options are further explained in the next section (See **Understanding Exception Trigger Options**).
4. Click OK to save and exit Exception menu.



### 7.2.1 Understanding Exception Trigger Options

When setting up exception handlers for such features as motion detection and sensor alarms, you may select triggering options to alert you of these exceptions.

The triggering options that you may select include:

- **Pop-up Image on Monitor:** When an alarm is triggered, the local monitor (VGA or BNC monitor) will display an image under Live Preview mode. This alarm can be configured under the Popup Alarm Image handle method. For alarms that are triggered simultaneously, images will be displayed one at a time every 10 seconds (default dwell time). A different dwell time can be set by going to Menu > Setting > Display > Dwell Time. Once the alarm stops, cycling of the images will also stop and you'll be returned to the Live Preview screen.

- **Audio Warning:** Triggers an audible **beep** when exception is detected.
- **Notify Surveillance Centre:** Sends a signal to remote alarm host when exception is detected (See **Configuring a Remote Alarm Host**).
- **Trigger Alarm Output:** Triggers an alarm output when exception is detected. Alarm output can be configured by following the steps listed in **Setting Up Sensor Alarms**.
- **Send Email:** Sending email when exception is detected. Sending email can be configured by following the steps listed in **Configuring E-mail Settings**.

## 8. Network Settings

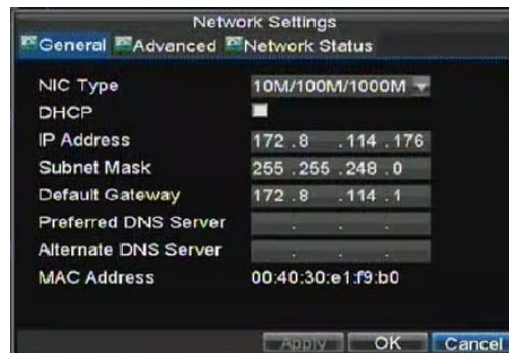
### 8.1 Configuring Network Settings

Network settings must be configured before you're able to use your DVR over the network.

#### 8.1.1 Configuring Basic Settings

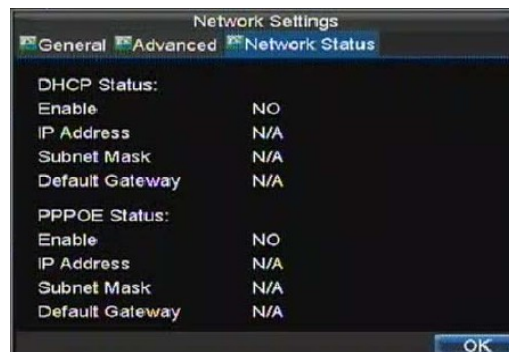
To configure basic network settings:

1. Enter the Network Settings menu shown by clicking Menu > Setting > Network.



2. Select the **General** tab.

3. If you have a DHCP server running and would like your DVR to automatically obtain an IP address and other network settings from that server, check the **DHCP** checkbox. You may check the DHCP status by going to the **Network Status** tab, as shown below.



1

4. If you would like to configure your own settings, enter the settings for:

- **IP Address:** IP address you would like to use for your DVR.
- **Subnet Mask:** Subnet Mask of network.
- **Default Gateway:** IP address of your Gateway. Typically the local IP address of your router.
- **Preferred/Alternate DNS Server:** The preferred and alternate Domain Name System (DNS) Server to be used with your DVR.

5. Click OK to save and exit the Network Settings menu.

### 8.1.2 Configuring PPPoE Settings

Your DVR also allows for Point-to-Point Protocol over Ethernet (PPPoE) access. However PPPoE is mainly available in the USA and not in the UK. PPPoA is used in the UK but this is not supported by this product.

### 8.1.3 Configuring DDNS

You may setup Dynamic DNS (DDNS) if you do not have a static IP address for remote connection.

To setup DDNS:

1. Enter the Network Settings menu by clicking Menu > Setting > Network.
2. Select the **Advanced** tab.
3. Select the Set button next to **DDNS** to enter the DDNS settings menu.



4. Check the **DDNS** checkbox to enable feature.

5. Select **DDNS Type**. There are three different DDNS type to choose from, IpServer, PeanutHull and DynDNS.

- **IpServer:** Enter **Server Address** for IpServer.
- **PeanutHull:** Enter **User Name** and **Password** obtained from the PeanutHull website
- **DynDNS:** Enter **Server Address** for DynDNS (i.e. members.dyndns.org)

Under DVR Domain Name, enter the domain obtained from the DynDNS web site. Lastly, enter the **User Name** and **Password** registered in the DynDNS network.

#### 8.1.4 Configuring an NTP Server

A Network Time Protocol (NTP) Server may also be setup on your DVR to keep the date and time current and accurate.

To setup an NTP server:

1. Enter the Network Settings menu by clicking Menu > Setting > Network.
2. Select the **Advanced** tab.
3. Select the Set button next to **NTP** to enter the NTP settings menu, as shown below.



4. Check the **NTP** checkbox to enable feature.

5. Set NTP settings:

- **Synchronize Every:** Time in minutes to synchronize with NTP server.
- **NTP Server:** IP address of NTP server.

6. Click OK to save and exit menu.

**Note:** Time synchronisation interval has a range of 0-10080ms, normally 7200ms. If the DVR is used on a public network, you should use a NTP server that has a time synchronisation function, such as the server at the National Time Center (IP Address: 210.72.145.44). If the DVR is setup in a more customised network, NTP software can be used to establish an NTP server used for time synchronisation.

#### 8.1.5 Configuring a Remote Alarm Host

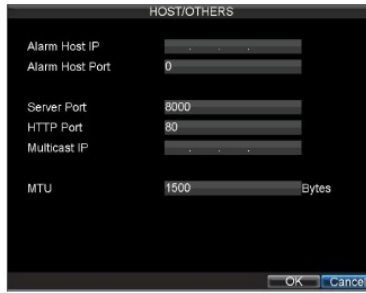
With a remote alarm host set, the DVR will send a signal to the host when an alarm is triggered. The remote alarm host must have the Network Video Surveillance software installed.

To set up a remote alarm host:

1. **1.** Enter Network settings menu by clicking Menu > Setting > Network.
2. **2.** Select the **Advanced** tab.



3. Click the Set button next to **Host/Others** to enter the Host/Others menu.



4. Enter **Alarm Host IP** and **Alarm Host Port**. Alarm Host IP is the IP of the remote PC which has the Network Video Surveillance software installed. The Alarm Host Port must be the same as software's alarm monitor port (default port is 7200).

### 8.1.6 Configuring Multicast

Setting up multicasting solves limitation issues when streaming videos through a network access device. A multicast address spans the Class-D IP range of 224.0.0.0 to 239.255.255.255. It is suggested that the IP address range of 239.252.0.0 to 239.255.255.255 be used.

To set up multicasting:

1. Enter the Network Settings menu by clicking Menu > Setting > Network.
1. Select the **Advanced** tab.
2. Click the Set button next to **Host/Others** to enter the Host/Others menu.
0. Set **Multicast IP**, as shown below. When adding a device to the Network Video Surveillance software, the multicast address must be the same as the DVR's multicast IP.
1. Click OK to save and exit menu.

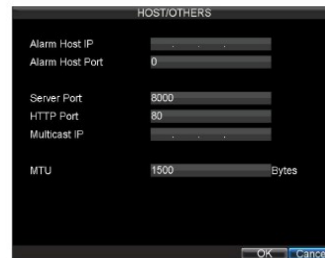
### 8.1.7 Configuring MTU

The MTU stands for Maximum Transmission Unit. A unit is represented as bytes.

To change MTU:

1. Enter the Network Settings menu by clicking Menu > Settings > Network.
2. Select the **Advanced** tab.
3. Click the Set button next to **Host/Others** to enter the Host/Others menu.
4. Enter new **MTU** for this device as shown below.

**NOTE:** The virtual value of MTU is from 500 to 9676

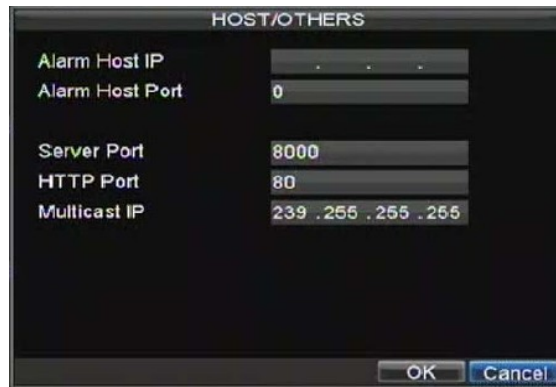


### 8.1.8 Configuring Server and HTTP Ports

If you would like to change the server and HTTP ports from the default settings, you can do so in the Network Settings menu. The default server port is 8000 while the default HTTP port is 80.

To change the default ports:

1. Enter the Network Settings menu by clicking Menu > Setting > Network.
2. Select the **Advanced** tab.
3. Click the Set button next to **Host/Others** to enter the Host/Others menu.
4. Enter new **Server Port** and **HTTP Port**.

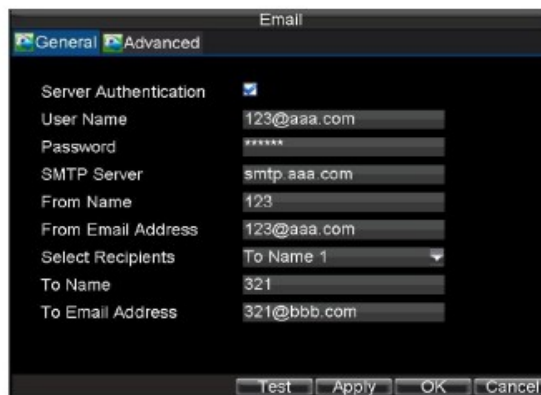


**Note:** The Server Port has a port range of 2000-65535 and is used for remote client software access. The HTTP port and Server Port are used for remote Internet browser access.

### 8.1.9 Configuring E-mail Settings

To configure E-mail settings:

1. Enter the Network Settings menu by clicking Menu > Setting > Network.
2. Select the **Advanced** tab.
3. Click the Set button next to **E-mail** to enter the E-mail menu.



- 1
- 2
- 3
- 4
- 5
- 6

- 7     **4.** Enter e-mail settings. Please refer to details above.
- 0     **5.** Click the Test button to test e-mail settings.
- 0     **6.** Select **Advanced** tab to enable **Attached JPEG File** if you want to send email  
0         with alarm images; the interval is the time of two adjacent alarm images. You  
1         can also set SMTP port (recommend using IP address) and enable SSL here.
- 8     **7.** Click the OK button to save and exit the E-mail menu.

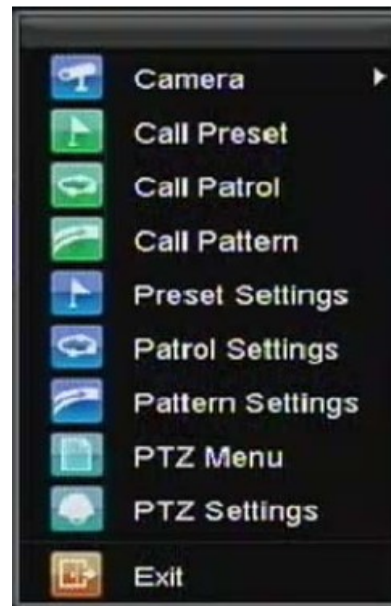
**Note:** It is recommended that the e-mail settings be tested after they are entered. This can be accomplished by clicking the Test button in the E-mail menu.

## 9. PTZ Controls

### 9.1 Navigating PTZ Menus

PTZ menus can be navigated through with either the mouse or the front panel/remote. For quick access to certain PTZ settings, right clicking with the mouse in a display while in PTZ control mode will bring up the PTZ settings menu. This menu is shown to the right. The items that can be found on this menu include:

- **Camera:** Select a PTZ camera.
- **Call Preset:** Call a PTZ preset.
- **Call Patrol:** Call a PTZ sequence.
- **Call Pattern:** Call a PTZ pattern.
- **Preset Settings:** Enter PTZ preset.
- **Patrol Settings:** Enter PTZ patrol.
- **Pattern Settings:** Enter PTZ pattern.
- **PTZ Menu:** Enter PTZ menu.
- **PTZ Settings:** Enter PTZ settings menu.

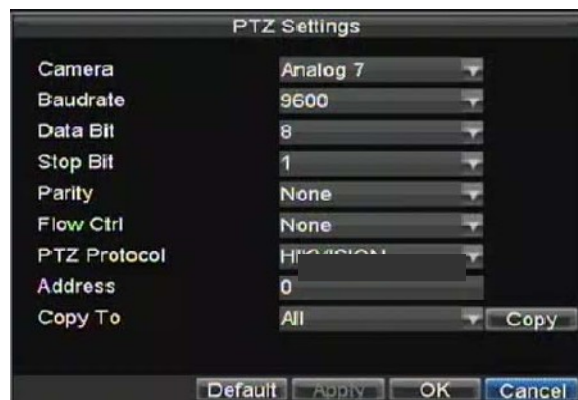


### 9.2 Configuring PTZ Settings

Settings for a PTZ camera must be configured before it can be used. Before proceeding, verify that the PTZ and RS-485 of the DVR are connected properly.

To configure PTZ settings:

1. Enter the PTZ Settings menu by clicking Menu > Settings > PTZ. The PTZ Settings menu is shown below.



- 1 2. Select channel where PTZ camera is installed next to **Camera** label.
- 2 3. Enter PTZ settings so it matches that of the PTZ camera.
- 3 4. Click OK button to save and exit menu.

### 9.3 Setting PTZ Presets, Patrols & Patterns

Your DVR allows you to customise presets, patrols and patterns for a connected PTZ camera.

#### 9.3.1 Understanding PTZ Controls

Before setting presets, patrols and patterns, it's important to understand some of the features of the PTZ control panel, shown below.



The controls on the PTZ panel include:

- 1 1. **Directional Pad/Auto-scan Buttons:** Controls the movements and directions of the PTZ. Center button is also used to start auto-scan of PTZ.
- 2 2. **Zoom:** Used to zoom in and out with the PTZ.
- 3 3. **Focus:** Used to adjust the focus of the PTZ.
- 4 4. **Iris:** Used to open up or close the iris of the PTZ.
- 5 5. **Speed:** Adjusts the movement speed of the PTZ.
- 1 6. **Light:** Turns PTZ light (if applicable) on and off.
- 2 7. **Wiper:** Turns PTZ wiper (if applicable) on and off.
- 3 8. **Zoom In:** Instantly zooms PTZ in.
- 4 9. **Center:** Centers PTZ.

#### 9.3.2 Customising Presets

Presets can be set to move your PTZ camera to a desired *preset* location at the click of a button. To setup and use custom PTZ presets:

- 1 1. Enter the PTZ Control interface, shown above by clicking PTZ in the mouse
  - 2 menu or the PTZ button on the front panel.
  - 3 2. Select the Preset button to enter the Preset Management menu.
  - 4 3. In the Preset Management menu, shown below, you may:
    - **Configure Preset:** Use the PTZ control panel to adjust the position of the preset. Select a Preset number and click the Set button to save preset location.
    - **Clear Preset:** Select a Preset number and click the Clear button to delete the preset. You may also select the Clear All button to delete all presets.
    - **Call Preset:** Select a Preset and click the Call button.
- Note:** Only valid presets can be called and deleted.



### 9.3.3 Customising Patrols

Patrols can be setup to move the PTZ to different key points and have it stay there for a set duration before moving on to the next point. The key points are defined by presets, which can be set following the steps above in **Customising Presets**.

To set up and use PTZ patrols:

1. Enter the PTZ Control interface, by clicking PTZ in the mouse menu or the PTZ button on the front panel.
- 1 2. Select the Patrol button to enter the Patrol Management menu, shown below.



- 1
- 2
- 3 3. In the Patrol Management menu, you may:

#### • Configure Patrol:

- 0 1. Select a **Patrol Number** to set.
- 1 2. Select valid presets (See **Customising Presets**) and click the Set button to enter the Patrol configuration menu. A sequence should have at least 2 valid presets.
- 2
- 3 3. Set the **Key Point No.**, **Duration**, and **Speed** (See below). The **Key Point No.**
- 4 determines the order at which the PTZ will follow while cycling through the
- 5 patrol. The **Duration** refers to the time span to stay at the corresponding key
- 6 point. The **Speed** defines the rate at which the PTZ will move from one key
- 7 point to the next.



- 0 4. Click OK to return to Patrol Management menu and repeat steps 2-3 to
- 1 configure other key points.
- 1 5. After all key points have been configured, click OK to save and exit menu.

• **Clear Patrol:**

- 1 1. Select a valid **Patrol Number**.
- 2 2. Click the Clear button to delete patrol.

• **Call Patrol:**

- 1 1. Select a valid **Patrol Number**.
- 2 2. Click the Start button to call the patrol, select the stop button to stop the patrol,
- 3 as shown below.



### 9.3.4 Customising Patterns

Patterns can be setup by recording the movement of the PTZ.

To setup and use PTZ patterns:

1. Enter the PTZ Control interface, see (Understanding PTZ Controls) by clicking PTZ in the mouse menu or the PTZ button on the front panel.
2. Select the Pattern button to enter the Pattern Management menu, shown below.



- 1 **3. Select a **Pattern Number**.**
- 2 **4. To record a new pattern, select the Run Record button to start recording of the movements of the PTZ. Use the PTZ control panel to move the PTZ. The PTZ movements will be recorded until the Stop Record button is clicked.**
- 3 **5. To run a pattern, click the Run Pattern button on a valid pattern. The PTZ will move according to the path that was defined until Stop Pattern is clicked.**
- 4 **6. Click OK to save and exit from menu.**



## 10. Camera Management

### 10.1 Configuring IP Cameras

Depending on the model of your DVR, IP cameras can be setup and used in conjunction with regular analogue cameras. Please refer to following table for the performance of supported cameras, the number of IP cameras listed below are the maximum recording cameras that are supported with a certain resolution.

Analogue Cameras		IP Cameras			
Model	Analogue	4CIF	1.3Mpx HD720P	2.0Mpx UXGA 12FPS	2.0Mpx UXGA 25FPS
ALIEN804	4	4	2	2	1
ALIEN808	8	8	4	4	2
ALIEN816	16	8	4	4	2

Before configuring IP cameras, please ensure that all IP cameras are connected to the same network as your DVR and that the network settings for your DVR are correctly set (See Configuring Network Settings). If the IP cameras are not on the same LAN, please make sure the server port and RTSP port in the IP cameras are different from each other, and the port mapping has been properly configured.

To configure IP cameras:

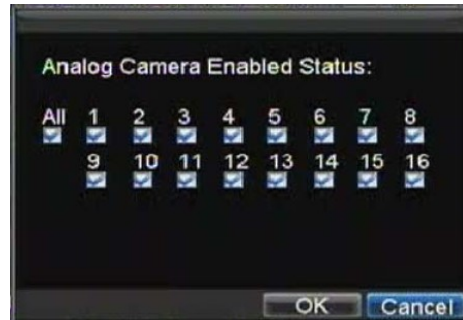
1. Enter the Camera Management menu, shown below by clicking Menu > Setting > Camera.



2. Determine number of analogue channels to disable. Please note that in order to add more than 8 channels of 4CIF IP cameras or 4 channels of 720P/UXGA IP cameras, you will need to disable some analogue channels. Disabling one analogue channel will extend one channel of 4CIF IP camera. Disabling two channels of analogue cameras will extend one channel for 720P/UXGA IP camera.

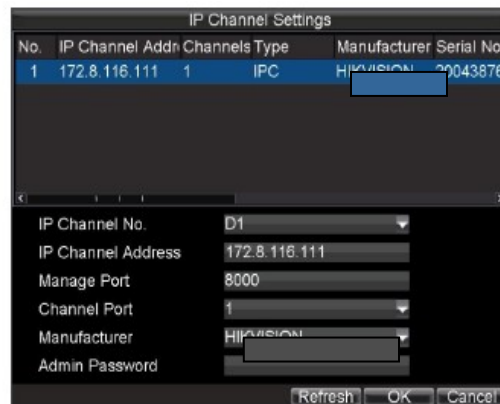
3. To disable analogue channels, click the Status button to enter the Camera Enabled Status menu, shown below. Uncheck checkboxes to disable corresponding channels.

Click OK to save setting. A confirmation message will appear on the screen asking you to reboot the DVR. Click Yes to reboot.



After the system has rebooted, re-enter the Camera Management menu and continue with the following steps.

4. Select the Add button to enter IP Channel Settings menu, shown below.

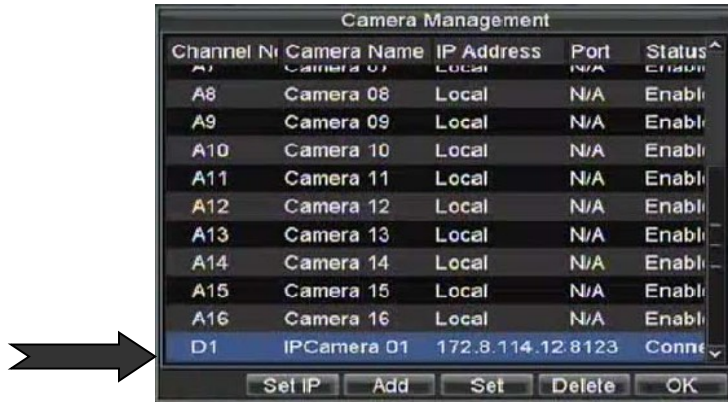


5. Select the IP device from the list. The devices found in the list are those supported by SADP and are found by the DVR. If no devices were found, you may manually enter the camera parameters in the fields below.

6. Enter IP camera parameters. This includes the IP address (domain name), manage port, channel port, manufacturer and password of the IP camera.

7. Select OK to save and return to the Camera Management menu.

8. If IP camera was added successfully, the **Status** for that camera would show that it is **Connected**. If it does not, click the Set button to verify that the parameters were entered correctly. You may also delete an added channel by clicking the Delete button.



9. Click OK to exit out of the Camera Management menu.

### To adjust IP camera compression settings:

10. Enter the Record Settings menu, shown below by clicking Menu > Settings> Record.



11. Select the **General** tab.

12. Select the IP camera to configure next to the **Camera** label.

13. Adjust IP camera compression settings. If the IP camera was added successfully, the DVR will show OSD, channel name and the compression parameters in accordance with the IP camera's current settings.

14. Select the **Substream** in the Encoding Parameters. Substream allows the setting of resource settings for network preview only and does not affect mainstream settings that are used for writing data to the hard drive.

15. Click OK to save and exit out of menu.

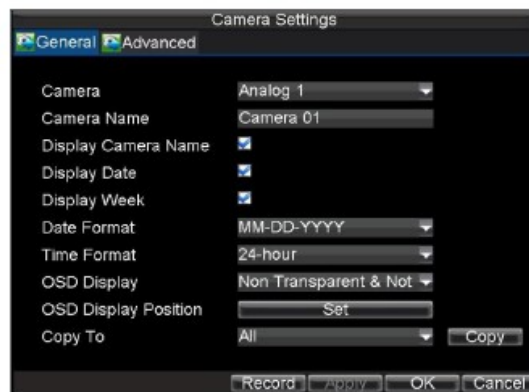
**Note:** The quality of resolution, frame rate and bit rate depends on the performance of the IP camera.

## 10.2 Configuring OSD Settings

On Screen Display (OSD) settings can be configured in the Camera Management menu. The OSD is shown in each display during Live Preview mode and includes the time and date as well as the camera name.

To configure OSD settings:

1. Enter the Camera Management/Settings menu, shown below by clicking Menu > Settings > Camera.
2. Select channel to setup OSD settings under **Channel** number. Click the Set button.
3. Configure desired OSD settings as shown below.



## 10.3 Setting up Privacy Mask

You may setup privacy mask, to mask off sensitive or private areas, in the field of view of a camera.

**To setup privacy mask:**

1. Enter the Camera Management/Settings menu by clicking Menu > Settings > Camera.
2. Select channel to setup privacy mask under **Channel** number. Click the Set button.

3. Select the **Advanced** tab to enter the Advanced Camera Settings menu shown below.



1  
2

4. Check the **Mask** checkbox to enable feature.

5. Click the Area Settings button to enter Area Settings menu.

6. Setup mask area, as shown below. Up to 4 areas can be set.



7. Select OK to save and exit mask setup.

## 10.4 Adjusting Display Settings

Display settings such as the brightness, contrast, saturation and hue can also be adjusted in the Camera Management menu.

### To adjust display settings:

1. Enter the Camera Management/Settings menu by clicking Menu > Settings > Camera.

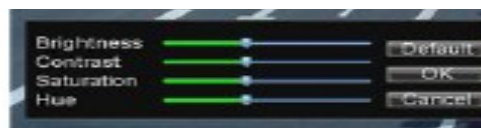
2. Select channel to adjust display settings under **Channel** number. Click the Set button.

3. Select the **Advanced** tab to enter the Advanced Camera Settings as shown below.



4. Click the Set button next to the Image Settings label.

5. Adjust the display settings, as shown below. Brightness, contrast, saturation and hue can be adjusted. The adjustment of display settings not only affect previewed images, but also recorded images.



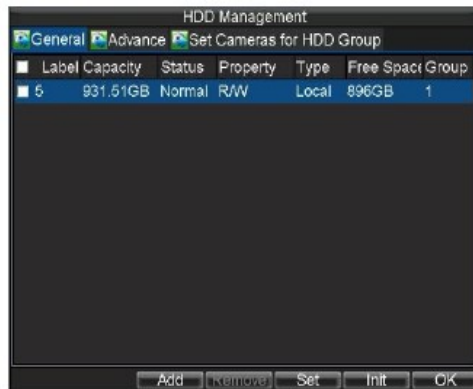
## 11. HDD Management

### 11.1 Initialising HDDs

A newly installed hard disk drive (HDD) must be first initialised before it can be used with your DVR. Initialising the HDD will erase all data on it.

To initialise a HDD:

1. Enter the HDD Management menu by clicking Menu > HDD.



2. Select HDD to initialise.

3. Click the Init button.

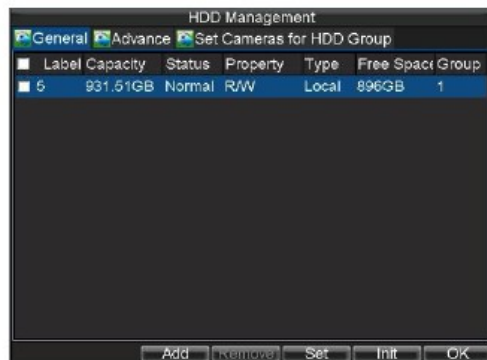
4. Select OK button to begin initialisation. After the HDD has been initialised, the status of the HDD will change from *Abnormal* to *Normal*.

### 11.2 Setting Network HDD

Add the allocated “DVR Storage Space” of NAS or IP SAN disk to DVR.

To set a network HDD:

1. Enter the HDD Management menu by clicking Menu > HDD.



- 1 **2.** Click **Add** to enter **Network HDD** menu.
- 2 **3.** Select the type as NAS or IP SAN.



- 1 **4.** Select **Add** button to add network HDD to HDD list.



- 1 **5.** Select the network HDD to initialise. After initialisation, the network HDD can be used.
- 2

### 11.3 Setting HDD Groups

Your DVR can separate multiple HDDs into groups. Video from specified channels can be set for recording in a particular HDD group.

To setup a HDD group:



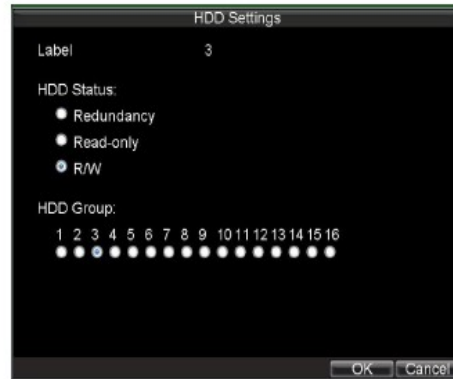
1. Enter the HDD Management menu by clicking Menu > HDD.

2. Select HDDs to be added to group.

3. Select Set button to enter HDD Settings menu.

4. Set the **HDD Group Number**.

5. Select OK to save and exit menu.



**Note:** By default, all HDDs belong to group 1.

**To setup specified channels to be recorded on a particular HDD group:**

6. Select **Set Cameras for HDD Group** tab to enter setup interface.

7. Select channels for the group.

8. Select the HDD group you want the channels to be recorded on.



9. Select OK to save and exit menu.

## 11.4 Setting HDD Status

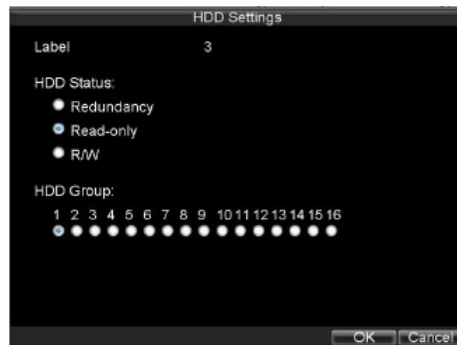
You may change the behavior of your HDD by changing its status. The status of a HDD can be set to redundancy, read-only or read/write (R/W).

### 11.4.1 Setting HDD to Read-Only

A HDD can be set to read-only to avoid important recorded files from being overwritten when the HDD becomes full.

To set a HDD to read-only:

1. Enter the HDD Management menu by clicking Menu > HDD.
2. Select HDD to protect.
3. Select the Set button to enter the HDD Settings menu, as shown below.



4. Set **HDD Status** to **Read-Only**.
5. Select OK to save and exit menu.

**Note:** Once set to read-only, the HDD cannot be written to until it is set back to read/write (R/W). If the HDD that is currently being written to is set to read-only, the data will be recorded to the next HDD. If there is only one HDD present, setting it to read-only will cause the DVR to not record.

### 11.4.2 Setting HDD to Redundancy

In order to use HDD redundancy on your DVR, you will need to have at least two hard drives installed. Setting up HDD redundancy will allow your DVR to redundantly record a copy of the video onto multiple drives as a safeguard against losing all your files in case of hard drive failures.

To setup HDD redundancy:

1. Enter the HDD Management menu by clicking Menu > HDD.
2. Select HDD for redundancy option.
3. Select the Set button to enter the HDD Settings menu as shown above.
4. Set **HDD Status** to **Redundancy**.
5. Select OK to save and exit menu.

**Note:** The HDD that is set to redundancy is used to store an extra copy of the recording. If an HDD is set to redundancy, at least one HDD should be set to the R/W status.

## 11.5 Checking HDD Status

You may check the status of any of the installed HDDs on your DVR at anytime.

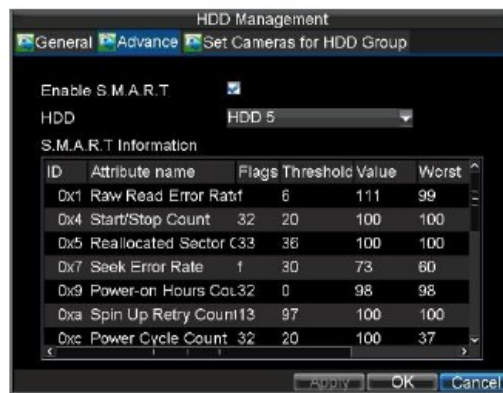
To check the status of a HDD:

1. Enter the HDD Management menu by clicking Menu > HDD.
2. The status of your HDD is listed under the **Status** column. If the status is listed as *Normal* or *Sleeping*, the HDD is in working order. If it is listed as *Abnormal* and has already been initialised, the HDD needs to be replaced. If the HDD is *Uninitialised*, you will need to initialise it before it can be used in your DVR. Please refer to **Initialising HDDs** for further instructions.

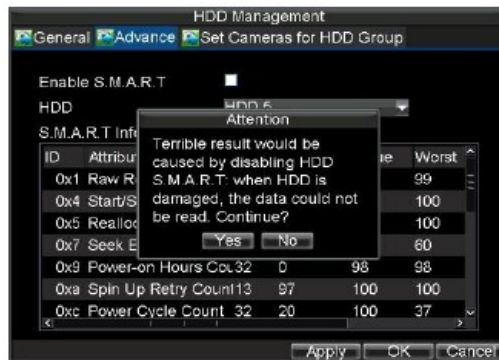
You may also view the SMART information of installed HDDs. SMART, short for Self-Monitoring, Analysis and Reporting Technology is a monitoring system for hard disk drives to detect and report on various indicators of reliability in the hopes of anticipating failures.

### To view SMART information of a HDD:

3. Enter the HDD Management menu, shown below by clicking Menu > HDD and select Advance tab.



4. The checkbox of Enable S.M.A.R.T is already checked in default.
5. Select a HDD you want to view the S.M.A.R.T information on.
6. If clicking to disable the S.M.A.R.T function a warning display appears as below.

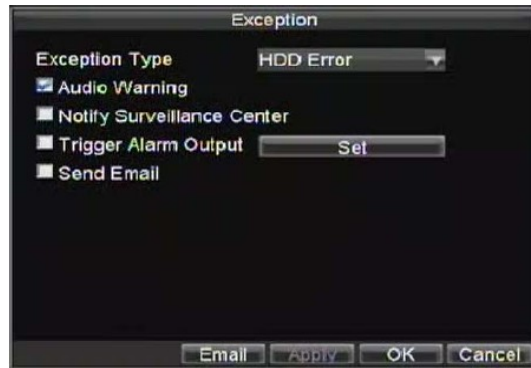


## 11.6 Configuring HDD Alarms

HDD alarms can be set to trigger when an HDD is uninitialised or in an abnormal state.

To set HDD alarms:

- 1
- 2 **1.** Enter Exception menu, shown below by clicking Menu > Exception.



- 1 **2.** Select HDD Error under **Exception Type**.
- 2
- 3 **3.** Select trigger action. Trigger actions are further explained in **Understanding Exception Trigger Options**.

## 12. DVR Management

### 12.1 Configuring General Settings

General settings such as the system language can be configured in the General Settings menu of your DVR.

To configure general settings:

1. Enter the General Settings menu by clicking Menu > Settings > General.



2. Select the **General** tab.

3. Configure general settings. These settings include:

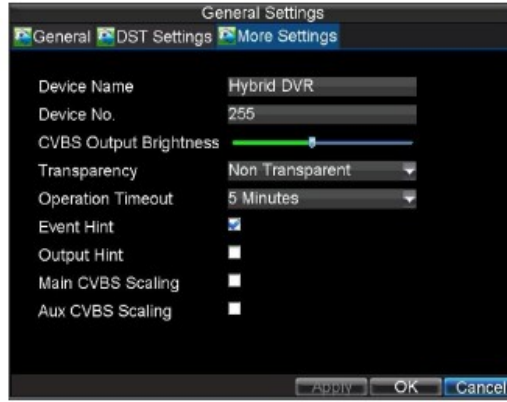
- **Language:** Default language used in DVR menus.
- **CVBS Output Standard:** Video output standard: Use PAL.
- **VGA Resolution:** VGA or HDMI output resolution.
- **Time Zone:** Time zone to use for DVR.
- **Menu Date Format:** Format to use for date.
- **System Time:** System time and date.
- **Mouse Pointer Speed:** Speed of mouse pointer.
- **Enable Wizard:** Activate or deactivate the Wizard when booting up.
- **Enable Password:** Enable/disable system password.

**Note:** If the video standard is different between the input and the output, you may notice flickering in Live Preview mode.

## 12.2 Configuring Advanced Settings

To configure more advanced settings:

1. Enter the General Settings menu, shown above by clicking Menu > Settings > General.
2. Click the **More Settings** tab; this will take you to the More Settings menu, shown below.



3. Configure settings, including:

- **Device Name:** Name to use for DVR.
- **Device No.:** Device number to use for DVR.
- **CVBS Output Brightness:** Video output brightness.
- **Transparency:** Menu transparency.
- **Operation Timeout:** Set timeout time for menu inactivity. For example, if timeout time was set to 5 minutes, after 5 minutes of inactivity in the General Settings menu, you'll be returned to the Live Preview.
- **Event Hint:** If an exception occurs, will display a warning triangle in preview mode.
- **Enable Output Hint:** To display output status in preview mode - M (Main) or A (Aux).
- **CVBS Scaling:** Enable/disable video output scaling for main/aux video output.

## 12.3 Configuring RS-232 Port Settings (This option is not supported)

To configure RS-232 devices to be used with the DVR:

1. Enter the RS-232 Settings menu, shown in by clicking Menu > Settings > RS232.



2. Configure RS-232 Settings.

3. The RS-232 port can be used in two ways:

- **Parameter Control:** Connect a PC to the DVR using the PC serial port. Device parameters can then be set using software such as HyperTerminal. The serial port parameters must be the same as the DVR's when connecting with the PC serial port.
- **Transparent Channel:** Connect a serial device directly to the DVR. The serial device will be controlled remotely by the PC through the network and the protocol of the serial device.

**Note:** Please note that the remote control features through the RS-232 port are limited.

## 12.4 Managing User Accounts

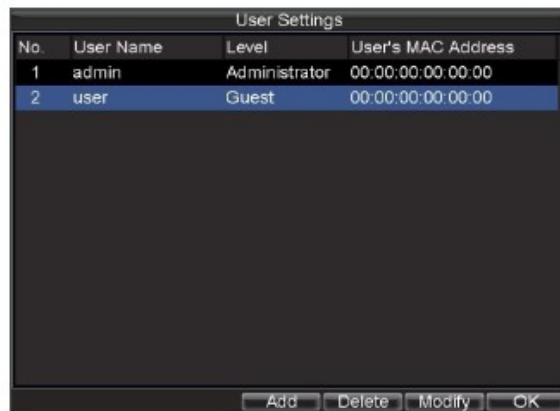
By default, your DVR comes with one user account, the *Administrator* account. The *Administrator* user name is **admin** and the password is **12345**. The default password for *Administrator* should be changed right away for security reasons. The *Administrator* has the authority to add, delete or configure parameters for many of the system functions.

**Recommendation:** There is no backdoor method for recovering a password so before changing your password, it is recommended that you create a new user and password with **full** privileges so that you have a backup method if you make a mistake when changing your password.

### 12.4.1 Adding a New User

You may add up to 31 new users to your DVR. To add new users:

Enter the User Settings menu, shown below by clicking Menu > Settings > User.



No.	User Name	Level	User's MAC Address
1	admin	Administrator	00:00:00:00:00:00
2	user	Guest	00:00:00:00:00:00

1. Select the Add button to enter the Add User menu shown below.



Add

User Name: User

Password: \*\*\*\*\*

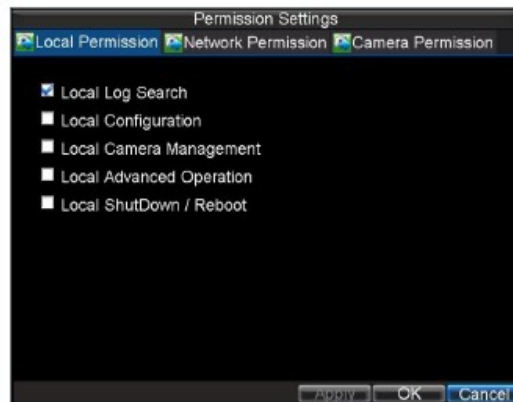
Confirm: \*\*\*\*\*

Level: Guest

User's MAC: 00:00:00:00:00:00

Permission OK Cancel

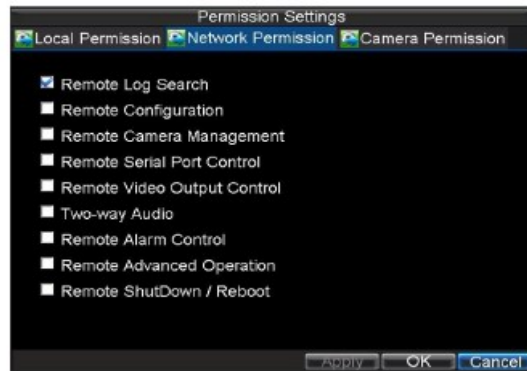
2. Enter information for new user, including **User Name**, **Password**, **Level** and **User's MAC** address.
3. The **Level** is the user level and is separated into two tiers.
  - **Operator:** The Operator user level has the authority to configure two-way audio in network settings and all parameters in channel settings.
  - **Guest:** The Guest user cannot configure network settings, but can configure the local playback as well as the remote playing in channel settings.
4. If **User's MAC** is configured and enabled, the user may only access the DVR from that particular MAC address. Only set this if you want to access the DVR from **one** network device only i.e PC, laptop etc.
5. Select the Permission button to enter the Privilege Settings menu, shown below.



6. Configure privileges for local settings under **Local Permission** tab. The local settings include:
  - **Local Log Search:** Search and view logs of DVR.
  - **Local Configuration:** Configure and restore parameters to factory defaults. Introduce settings to export settings from DVR.
  - **Local Camera Management:** Enable and disable analogue channels. Ability to add and delete IP cameras.
  - **Local Advanced Management:** HDD management (including the initialisation and changing the properties of a disk). Ability to update system firmware as well as to stop the relay output.
  - **Local Shutdown/Reboot:** Shutdown or reboot the DVR.



7. Click on the **Network Permission** tab to configure network privileges, as shown below.



The network settings include:

- **Remote Log Search:** Remotely view logs that are saved on the DVR.
- **Remote Configuration:** Remotely configure parameters, restore parameters to factory defaults and import settings to as well as export settings from DVR.
- **Remote Camera Management:** Remotely enable and disable analogue channels. Add and delete IP cameras.
- **Remote Serial Port Control:** Configure settings for RS232 and RS485 ports.
- **Remote Video Output Control:** Send remote button control signal.
- **Two-Way Audio:** Ability to use two-way audio between the remote client and the DVR.
- **Remote Alarm Control:** Remote alert or control the relay output of the DVR. Alarm and exception settings must be configured properly to upload to host.
- **Remote Advanced Management:** Remotely manage hard disk drives (initialising and setting properties for HDDs). Ability to remotely update system firmware and cancel the relay output
- **Remote Shutdown/Reboot:** Remotely shutdown or reboot the DVR.

8. Click on the **Camera Permission** tab to configure channel privileges, as shown below.



The channel settings include:

- **Remote Live View:** Select and view live video over the network.
- **Local Manual Record:** Locally start and stop manual recording on any of the channels.
- **Remote Record Starting:** Remotely start and stop manual recording on any of the channels.
- **Local Playback:** Locally play recorded files that are on the DVR.
- **Remote Playback:** Remotely play and download recorded files that are on the DVR.
- **Local PTZ Control:** Locally control PTZ cameras.
- **Remote PTZ Control:** Remotely control PTZ cameras.
- **Local Video Export:** Locally backup recorded files from any of the channels.

9. Click the OK button to save and exit menu.

### 12.4.2 Deleting a User

To delete a user from the DVR:

1. Enter the User Settings menu by clicking Menu > Settings > User
2. Select user to delete.
3. Click the Delete button to delete user.
4. Click the OK button to exit menu.

### 12.4.3 Modifying a User

To modify a user:

1. Enter the User Settings menu by clicking Menu > Settings > User.
2. Select user to modify.
3. Click the Modify button to enter the Modify menu, shown below.

Field	Value
User Name	user
Password	*****
Confirm	*****
Level	Guest
User's MAC	00 : 00 : 00 : 00 : 00 : 00

4. Edit user information.
5. To modify user permissions, click on the privileges button. Permission settings are defined in the section above - *Adding a New User*.
6. Click the OK button to exit menu.

## 12.5 Importing & Exporting Configuration

Configuration information from your DVR can be exported to a USB device and imported into another DVR. This will allow you to efficiently setup the same configuration on numerous DVRs.

To import or export DVR configuration:

1. Enter the Import/Export Configuration menu by clicking Menu > Maintenance > Configuration.



2. Click Export to export a configuration file to USB device. USB device must be connected at this point to the DVR.
3. To import a configuration file, select the file from the USB device and click the Import button. After the import process is completed, you must reboot the DVR.
4. Click Cancel to exit out of menu.

## 12.6 Updating System Firmware

**SPECIAL WARNING: DO NOT ATTEMPT ANY FIRMWARE UPGRADE WITHOUT SPECIFIC INSTRUCTIONS FROM YOUR SUPPLIER/INSTALLER. AN INCORRECT UPGRADE CAN LEAVE THE DVR UNUSABLE.**

The firmware on your DVR can be updated using two methods. These methods include updating via an USB device or over the network via an FTP server.

### 12.6.1 Update via a USB device

1. Connect USB device to DVR. The firmware file must be located in the root directory of your USB device.
2. Enter the Firmware Update menu by clicking Menu > Maintenance > Upgrade.



3. Select the **Local Upgrade** tab.
4. Select the firmware on the USB device.
5. Select Upgrade to begin the update process.
6. After the system firmware has been updated, reboot the DVR.

### 12.6.2 Update via an FTP server

1. Configure PC (running FTP server) and DVR in the same Local Area Network. Run the 3rd-party TFTP software on the PC and copy the firmware into the root directory of TFTP.
2. Enter the Firmware Update menu by clicking Menu > Maintenance > Upgrade.
3. Select the **FTP** tab, shown below.

- 1
- 2
- 3
- 4
- 5
- 6
- 7
- 8
- 9
- 10
- 11
- 12
- 13



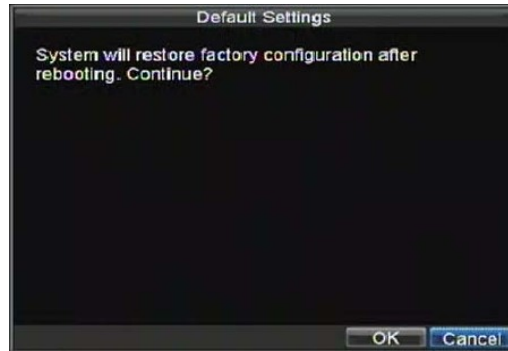
4. Input the FTP server address.
5. Select **Upgrade** to begin update process.
6. After the system firmware has been updated, reboot the DVR.

**Note:** If the DVR fails to update, please contact your supplier/installer for further assistance.

## 12.7 Restoring Default Settings

To restore default factory settings to your DVR:

1. Enter the Default Settings menu by clicking Menu > Maintenance > Default.



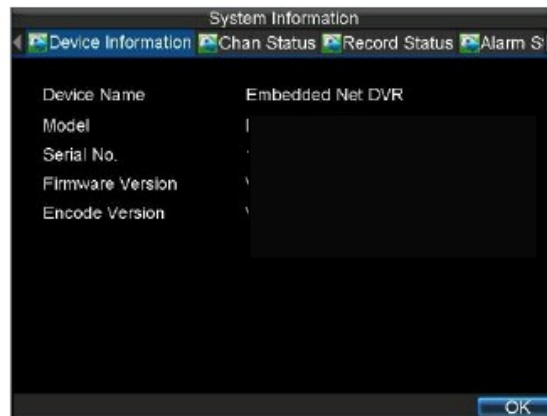
Select OK to restore factory defaults.

**Note:** Network information such as IP address, subnet mask and gateway will not be restored.

## 12.8 Viewing System Information

To view system information:

1. Enter the Information menu by clicking Menu > Maintenance > Information.



- **Device Information:** The model number of the DVR, serial No., the current firmware version installed on DVR, etc.
- **Chan Status:** Camera working status in DVR such as motion, tampering, video loss and video exception.
- **Record Status:** Recording status of the cameras, including: stream type, frame rate, bit rate, resolution, record type, etc.
- **Alarm Status:** The status of external alarm in/out on DVR .
  
- **Network Status:** Network status such as IP address, gateway, DNS server, client port, etc.

- **HD Status:** Hard disk status on DVR .

2. Select OK to exit to the previous screen.

## 12.9 Viewing System Logs

Many DVR events are logged in the system logs.

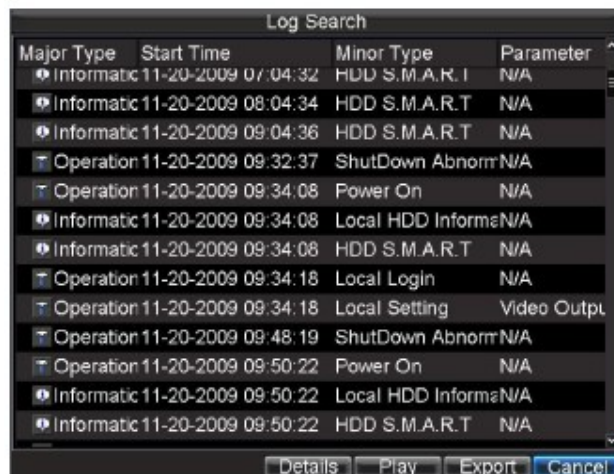
To access the system logs and search for these events:

1. Enter the Log Search menu by clicking Menu > Maintenance > Log Search.



2. Set search parameters.

3. Click the Search button to begin search. If logs matching the search criteria are found, they will be displayed in a list similar to that shown below.



4. To view more detailed information about a particular log entry, select the entry and click the Details button.

5. If applicable, you may also view the associated video to the selected log entry by clicking the Play button.
6. Log files can also be exported onto a USB device. To export a log file, connect a USB device to the DVR, select the log file to export and click the Export button. This will take you to the Log Search Export menu shown below. Click the Export button to export log onto USB device. The exported file will be named according to the time it was exported (e.g. 2000062991627.txt).



7. Click Cancel to exit out of menu.

### 13. Glossary

- **Dual Stream:** Dual stream is a technology used to record high resolution video locally while transmitting a lower resolution stream over the network. The two streams are generated by the DVR, with the main stream having a maximum resolution of 4CIF and the sub-stream having a maximum resolution of CIF.
- **DVR:** Acronym for Digital Video Recorder. A DVR is device that is able to accept video signals from analogue cameras, compress the signal and store it on its hard drives.
- **HDD:** Acronym for Hard Disk Drive. A storage medium which stores digitally encoded data on magnetic surfaces.
- **DHCP:** Dynamic Host Configuration Protocol (DHCP) is a network application protocol used by devices (DHCP clients) to obtain configuration information for operation in an Internet Protocol network automatically.
- **HTTP:** Acronym for Hypertext Transfer Protocol. A protocol to transfer hypertext request and information between servers and browsers over a network.
- **DDNS:** Dynamic DNS is a method, protocol, or network service that provides the capability for a networked device, such as a router or computer system using the Internet Protocol Suite, to notify a domain name server to change, in real time (ad-hoc) the active DNS configuration of its configured hostnames, addresses or other information stored in DNS.
- **Hybrid DVR:** A hybrid DVR is a combination of a DVR and NVR.
- **NTP:** Acronym for Network Time Protocol. A protocol designed to synchronise the clocks of computers over a network.
- **NTSC:** Acronym for National Television System Committee. NTSC is an analogue television standard used in such countries as the United States and Japan. Each frame of an NTSC signal contains 525 scan lines at 60Hz.
- **NVR:** Acronym for Network Video Recorder. An NVR can be a PC-based or embedded system used for centralised management and storage for IP cameras, IP Domes and other DVRs.
- **PAL:** Acronym for Phase Alternating Line. PAL is also another video standard used in broadcast televisions systems in the U.K. PAL signal contains 625 scan lines at 50Hz.
- **PTZ:** Acronym for Pan, Tilt, Zoom. PTZ cameras are motor driven systems that allow the camera to pan left and right, tilt up and down and zoom in and out.
- **USB:** Acronym for Universal Serial Bus. USB is a plug-and-play serial bus standard to interface devices to a host computer.



## 14. Frequently Asked Questions

### • **Why does my DVR make a beeping sound after booting?**

There are a few reasons for the warning beep your DVR makes after booting.

1. There is no HDD present in the DVR.
2. The HDD has not been initialised.
3. The HDD is defective.

If you wish to use your DVR without any HDDs, you may disable this warning beep in the Exception Settings menu (See **Setting Exception**).

### • **Why does the DVR seem unresponsive when operated with the IR remote control?**

If your DVR seems unresponsive when using the IR remote and you have read through the section **Using the IR Remote Control**, please check:

1. Check that the batteries are installed correctly in the remote, making sure that the polarities of the batteries are not reversed.
2. Make sure the batteries are fresh and are not out of power.
3. Make sure the remote has not been tampered with.
4. Check around and make sure there are no fluorescent lamps in use.

### • **Why does the PTZ seem unresponsive?**

If the PTZ seem unresponsive, please check:

1. Check that the RS485 cable is properly connected to the T+ and T- connections.
2. Check that the PTZ protocol set in the menu agrees with the PTZ camera.
3. Check that the PTZ data transfer speed in the menu agrees with the PTZ camera.
4. Check that the PTZ address is in the menu agrees with the PTZ camera.

### • **Why is there no video recorded after setting the motion detection?**

If there is no recorded video after setting the motion detection, please check:

1. Check that the recording schedule is setup correctly by following the steps listed in **Scheduling a Recording**.
2. Check that the motion detection area is configured correctly (See **Setting Up Motion Detection**).
3. Make sure that channels are being triggered for motion detection (See **Setting Up Motion Detection**).

### • **Why doesn't the DVR detect my USB export device for exporting recorded files?**

There's a chance that the DVR and your USB device are not compatible.

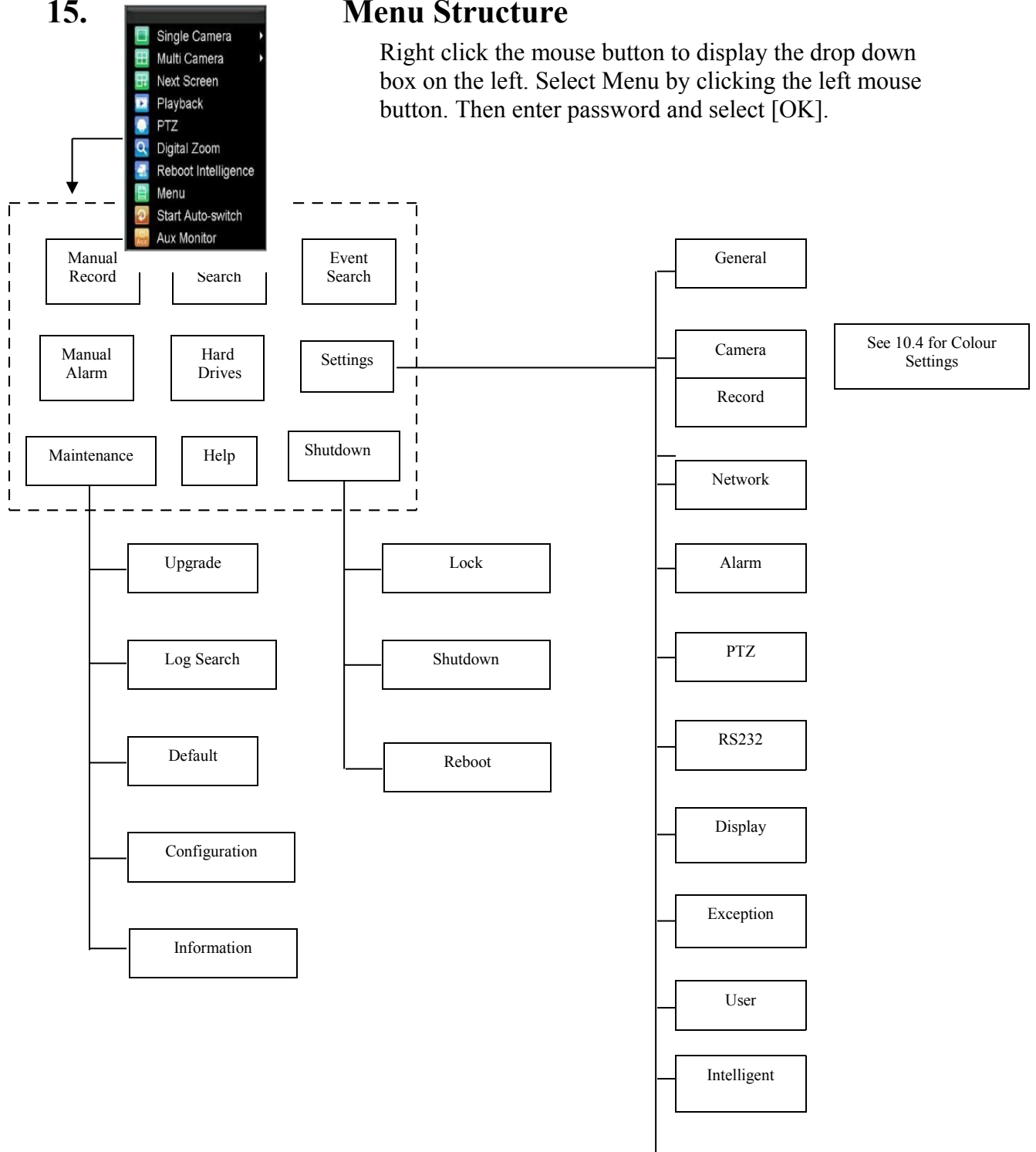
### • **My DVR is in Live Preview mode and the menu will not come up. It does not respond to the mouse, front panel, remote or keyboard.**

Your DVR may be in auxiliary mode. This occurs when the MAIN/SPOT button is pushed on the front panel. To return to the previous mode of operation, press the MAIN/SPOT button again.

15.

## Menu Structure

Right click the mouse button to display the drop down box on the left. Select Menu by clicking the left mouse button. Then enter password and select [OK].



## 16. Record Times for 16 channel DVR

### CIF mode

Frame Rate	HDD 320Gb	HDD 640Gb	HDD 750Gb	HDD 1.0Tb	HDD 1.5Tb	HDD 2.0Tb
25	3dys 7hr	6dy 14hr	7dy 17hr	10dy 7hr	15dy 11hr	20dy 14hr
12	6dys 14hr	13dy 4hr	15dy 11hr	20dy 14hr	30dy 22hr	41dy 5hr
6	13dy 4hr	26dy 9hr	30dy 22hr	41dy 5hr	61dy 20hr	82dy 10hr
4	17dy 14hr	35dy 4hr	41dy 5hr	54dy 23hr	82dy 10hr	109dy 22hr
2	35dy 4hr	70dy 8hr	82dy 10hr	109dy 22hr	164dy 21hr	219dy 20hr
1	52dy 18hr	105dy 12hr	123dy 16hr	164dy 21hr	247dy 8hr	329dy 18hr

### 2CIF mode

Frame Rate	HDD 320Gb	HDD 640Gb	HDD 750Gb	HDD 1.0Tb	HDD 1.5Tb	HDD 2.0Tb
25	1dy 15hr	3dy 7hr	3dy 20hr	5dy 3hr	7dy 17hr	10dy 7hr
12	3dy 7hr	6dy 14hr	7dy 17hr	10dy 7hr	15dy 11hr	20dy 14hr
6	6dy 14hr	13dy 4hr	15dy 11hr	20dy 14hr	30dy 22hr	41dy 5hr
4	8dy 19hr	7dy 14hr	20dy 14hr	27dy 11hr	41dy 5hr	54dy 23hr
2	17dy 14hr	35dy 4hr	41dy 5hr	54dy 23hr	82dy 10hr	109dy 22hr
1	26dy 9hr	52dy 18hr	61dy 20hr	82dy 10hr	123dy 16hr	164dy 21hr

### 4CIF mode

Frame Rate	HDD 320Gb	HDD 640Gb	HDD 750Gb	HDD 1.0Tb	HDD 1.5Tb	HDD 2.0Tb
25	19hr	1dy 15hr	1dy 22hr	2dy 13hr	3dy 20hr	5dy 3hr
12	1dy 15hr	3dy 7hr	3dy 20hr	5dy 3hr	7dy 17hr	10dy 7hr
6	3dy 7hr	6dy 14hr	7dy 17hr	10dy 7hr	15dy 11hr	20dy 14hr
4	4dy 9hr	3dy 19hr	10dy 7hr	13dy 17hr	20dy 14hr	27dy 11hr
2	8dy 19hr	17dy 14hr	20dy 14hr	27dy 11hr	41dy 5hr	54dy 23hr
1	17dy 14hr	35dy 4hr	41dy 5hr	54dy 23hr	82dy 10hr	109dy 22hr

### 720P mode Note: Only 8 channels maximum at this mode

Frame Rate	HDD 320Gb	HDD 640Gb	HDD 750Gb	HDD 1.0Tb	HDD 1.5Tb	HDD 2.0Tb
25	9hr	20hr	23hr	1dy 6hr	1dy 22hr	2dy 13hr
12	19hr	1dy 15hr	1dy 22hr	2dy 13hr	3dy 20hr	5dy 3hr
6	1dy 15hr	3dy 7hr	3dy 20hr	5dy 3hr	7dy 17hr	10dy 7hr
4	2dy 4hr	1dy 21hr	5dy 3hr	6dy 20hr	10dy 7hr	13dy 17hr
2	4dy 9hr	3dy 19hr	10dy 7hr	13dy 17hr	20dy 14hr	27dy 11hr
1	8dy 19hr	17dy 14hr	20dy 14hr	27dy 11hr	41dy 5hr	54dy 23hr