

# CCT717 VGA CARD FITTING INSTRUCTIONS

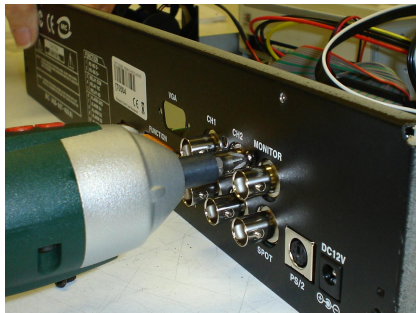


1. Remove the two screws each side of the CCT716 case and the four around the rear edge of the top case. Put these in a safe place. Gently ease case top by slightly lifting lid and pulling case top away from main unit.

2. Remove the two black screws holding the VGA blanking plate and discard blanking plate and these screws.

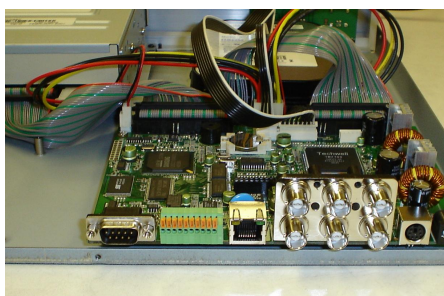
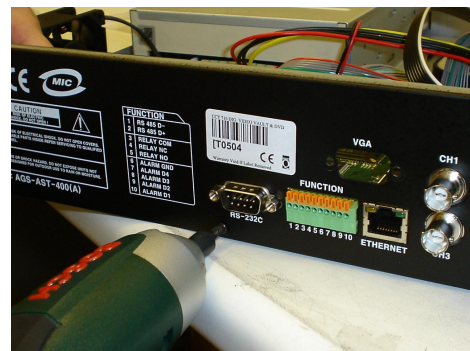
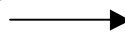


- 3.

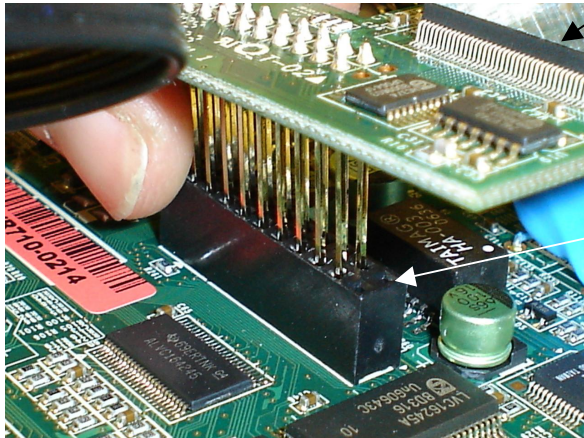


Now remove the black screw situated between the CH1 BNC input and the CH2 BNC input. Also remove the black screw situated between the CH2 BNC input and the MONITOR BNC output. Retain these screws – note these have different threads from those removed from the VGA blanking plate.

4. Now with the back of the machine facing you, remove the back-plate by removing the screw situated below the RS232C connector.



← The unit will now look like this.



This is the back of the unit

Note last two pin slots are empty

5. Now gently ease the VGA board into the main board VGA socket by carefully locating the pins so that looking from the inside of the unit, the two spare slots are to the right as per diagram above.

NOTE: Take care not to bend the pins. Push the VGA board pins down very gently.

6. Refit the back-plate and tighten the retaining screw.
7. Align the VGA board so that the holes align with the back-plate holes and secure the VGA board using the two special jack posts supplied and tighten them securely.



8. Now refit the two black screws removed in (3) above.
9. Finally replace the lid and refit the eight case lid screws.