

IP Dome Camera

IP Network Camera User Manual

Model IP-CAM710



Version 1.0.0

Safety Instruction

These instructions are intended to ensure that user can use the product correctly to avoid danger or property loss.

The precaution measure is divided into “Warnings” and “Cautions”

Warnings: Serious injury may be caused if warnings are neglected.

Cautions: Injury or equipment damage may be caused if cautions are neglected.

Warnings

1. This product must only be used in strict compliance with UK electrical standards and safety regulations.
2. Input voltage must be applied according to specification and meet the IEC60950 - 1 standard. This camera uses 12vDV and must be connected to a 12vDC regulated power supply.
3. It is recommended to use a separate power supply for each camera and to avoid overload that the power supply is adequately rated to cover current rating of camera plus 30% head room to ensure overheating is not caused which can create a fire hazard.
4. Always make sure that power plugs are firmly inserted into power sockets.
5. When the product is installed on a wall or ceiling, the device must be firmly fixed.
6. If smoke, odour or noise is emitted from the device, turn off the power at once and unplug the power cable.
7. If the product fails to work properly, please contact your installer and never attempt to disassemble the camera yourself. (We cannot assume any responsibility for problems caused by unauthorised repair or maintenance.)
8. Using PoE
This camera supports PoE. This allows the camera to be powered over Ethernet. You must have a switch that has PoE ports in which to connect the camera network connection.

Note that only specific IP cameras can be powered using this method and this does not apply to conventional analogue cameras.

Cautions

1. Make sure the power supply voltage is correct before using the camera.
2. Do not drop the camera or subject it to physical shock.
3. Do not touch the CCD sensor with your fingers. If cleaning is necessary, use clean dry cloth. If the camera is not used for an extended period, please fit the lens cap to protect the CCD from dust and dirt.
4. Do not aim the camera at the sun or use in very bright places. A blooming or smearing may occur otherwise (which is not a malfunction), which can affect the life of the CCD sensor.
5. The CCD sensor can be burnt out by a laser beam. Where laser equipment is used, make sure that the surface of the CCD sensor is not exposed to laser light.
6. The camera should only be operated in temperatures between $-10^{\circ}\text{C} \sim +60^{\circ}\text{C}$ and must not be installed in dusty or damp locations and not exposed to high electromagnetic radiation.
7. To avoid heat accumulation, good ventilation is required for operating environment.
8. Keep the camera away from liquid when in use.

INDEX

Safety Instructions	2
Warnings	2
Cautions	3
Index	4
1. Introduction	5
1.1 Network camera Functions and Features	5
2. Installation	6
2.1 Panels Description	6
2.1.1 Side Elevation of IP-CAM710 series camera	6
2.1.2 Rear Panel Description	7
2.2 Product Installation	8
Fig 2.2.1. Place card template to mark fixing holes	8
Fig 2.2.2 Fix securing plate	8
Fig 2.2.3 Dome Camera fixing	8
Fig 2.2.4 Dome camera fixed	8
2.3 Installation of Client Software	8
3. Parameter Configuration	9
3.1 Parameter Configuration through I.E	9
Fig 3.1.1 Login Interface	10
Fig 3.1.2 Preview Interface	10
Fig 3.1.3 Remote Parameters Config	11
3.2 Parameter Configuration through Client Software	12
3.3 Parameter Configuration through DVR9K	12
4. WAN Access	13
4.1 WAN access using independent IP camera not connected through DVR	13
Fig 4.1.1 Static IP Configuration dialogue box	13
Fig 4.1.2 Port Mapping	13
4.2 WAN Access with a dynamic IP address not connected through a DVR	14
Fig 4.2.1 Configuration of domain name in Client Software	14
5. Common failures and maintenance	15
6. Technical Specifications for IP-CAM710	16

1. Introduction

This network camera is a type of embedded digital surveillance product that combines the features of both traditional analogue camera and net DVS (Digital Video Server). Due to the embedded Linux operation system and the latest TI Davinci hardware platform the system operates with high scheduling efficiency. Furthermore, the firmware is burned onto the flash drive, which makes the product small, reliable and highly stable.

1.1 Network camera Functions and Features

The IP-CAM710 series support H.264 video Encoding and Oggvorbis Audio Encoding techniques. The camera accessing the Hybrid DVR9K uses the H.264 video codec.

The Network Functionality supporting TCP/IP includes TCP/IP, HTTP, DHCP, DNS, RTCP and PPPoE. Also IE browsing is available.

Heartbeat Function: The Heartbeat function allows the IP camera to initially communicate with a server regardless of the internal camera IP address.

Alarm Function: The product includes one input alarm channel and one alarm on/off output, and also supports motion detection, video loss, masking alarm and external alarm input.

Voice Talking : Supports two way audio.

User Management: Supports multilevel rights management. The administrator can create up to 15 separate users with different rights levels, which highly improve system security.

The IP-CAM710 series cameras support one channel video signal and 25fps in PAL or 30fps in NTSC and support both variable bit rate and variable frame rate with self-defined video quality and compression bit rate.

The IP-CAM710 cameras support resolutions of 4CIF (PAL: 704*576,NTSC:704*480), DCIF(PAL:528*384,NTSC:528*320), 2CIF(PAL:704*288,NTSC:704*240), CIF(PAL:352*288,NTSC:352*240) and QCIF(PAL:176*144,NTSC:176*120).

These products offer a 10M/100M self-adaptive Ethernet interface.

These cameras support parameter settings, the ability to browse real time videos and check camera performance through software or IE, and set external alarming and store the compressed bit rate through the network. They also support remote upgrades and maintenance. RS-485 supports monomial transparent channel function so that clients on remote PC can control the serial devices.

2. Installation

1. Read the following instructions carefully before installation.
2. Make sure that all the related equipment is powered down during the installation.
3. Check the power supply to prevent any damage caused by mismatching problems.
4. This product must not be installed in conditions of high humidity or high temperatures. Inadequate ventilation, dampness or vibration must be avoided.
5. Do not attempt to disassemble the camera yourself. Users are responsible for any problems caused by modifications, unauthorised repair or poor installation and are not supported by the manufacturer's warranty.
6. Power Supply, Lens and SD card are Optional.

2.1 Panels Description

2.1.1 Side Elevation of the IP-CAM710

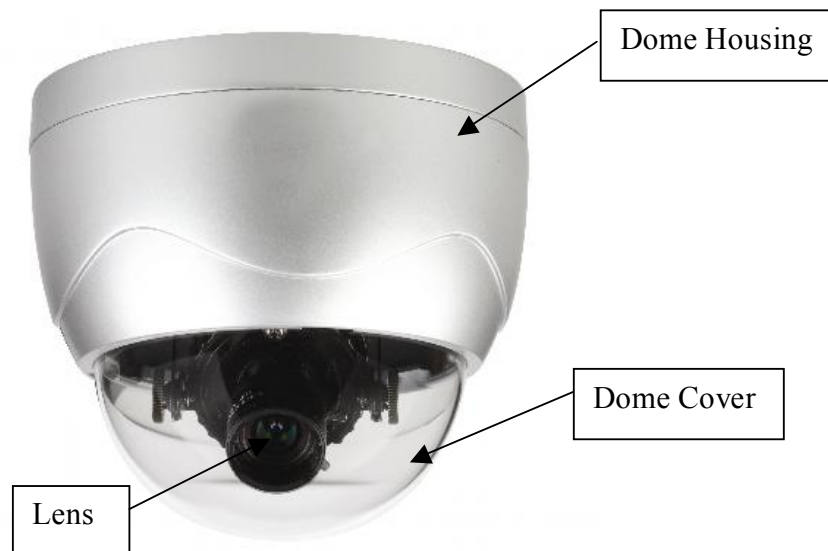
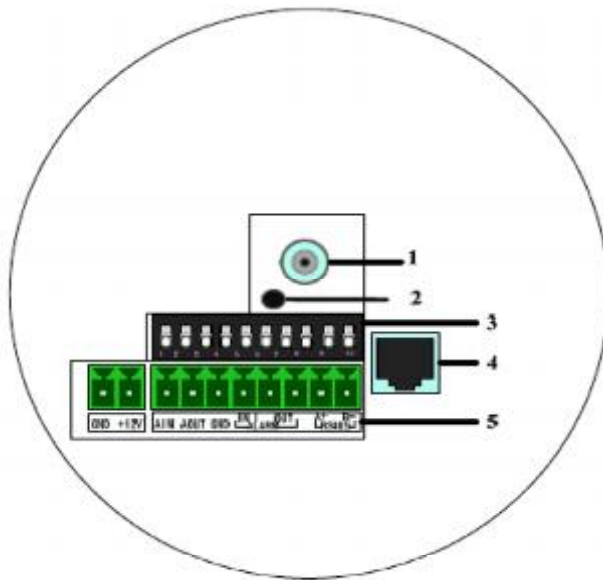


Fig 2.1.1 Side Elevation of IP-CAM710 series camera

2.1.2 Rear Panel Description



1. Analogue Video Output (BNC)
2. Power Lamp
3. Address & Protocol dial switch
4. Internet Interface
5. Power, voice input & output, alarm input and output and RS485.

Fig. 2.1.2 Rear Panel of IP-CAM710 series

Address & protocols dial switch. Define for dial switch from 1 to 5. Dial switch function as follows:



Switch Function	ON	OFF
1	SHARP	SOFT
2	AES	AI
3	BLC	OFF
4	FL	ON
5	NAGC	SAGC

Note: The dipswitches from 6 to 10 are not used on the IP-CAM710

2.2 Product Installation

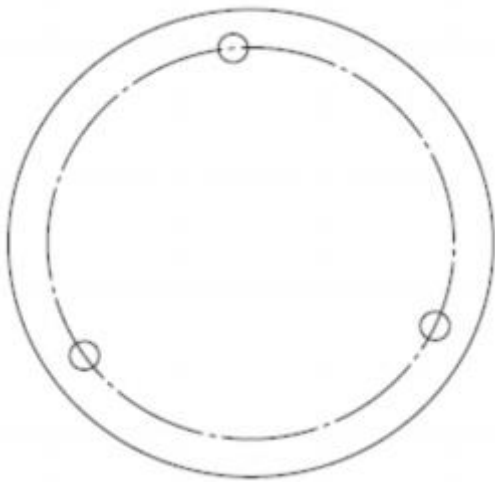


Fig 2.2.4 Place card template to mark fixing holes

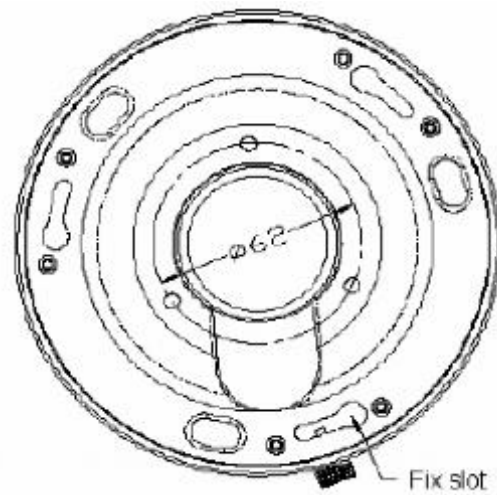


Fig 2.2.5 Fix securing plate

Position the three location pegs on the Dome camera into the three fixing slots on the securing plate. Ensure that the alignment marks correspond when the dome is fitted and then turn anti-clockwise to lock. The locking screw can now be tightened so that the dome cannot be moved.

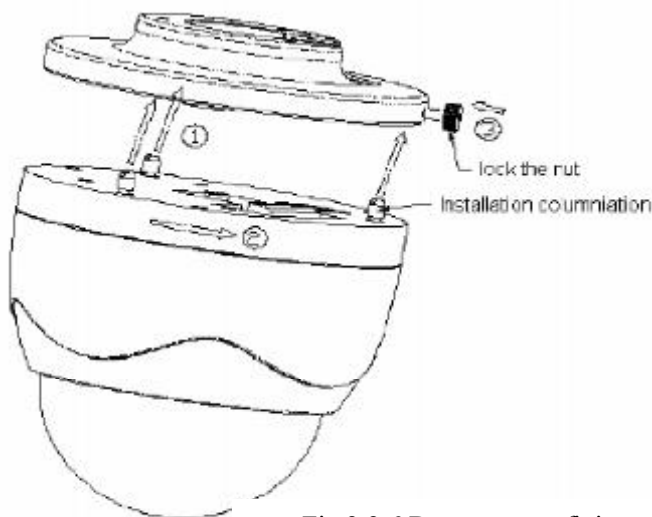


Fig 2.2.6 Dome camera fixing

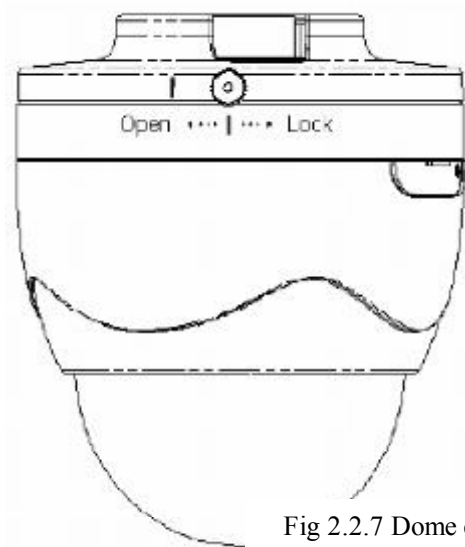


Fig 2.2.7 Dome camera fixed

2.3 Installation of Client software

The DVR9K client software manual is supplied on the CD with the client software. The client software is installed using help screens and these are covered in the client software manual. The client software interfaces with both the DVR9K digital video recorder and/or the IP cameras.

3. Parameter Configuration

There are several network parameters that need setting after the hardware installation. These parameters include IP address, subnet mask and port number, etc., which can be set by various means and two of them are detailed below.

1. Set the camera parameters such as IP address and PPPOE through IE.
2. Set the camera parameters through the client software.

Please make sure that the PC and network camera are connected and you can ping successfully before attempting the parameter changes as shown below in Fig.3.1 and Fig. 3.2.



Fig.3.1 LAN Connection

Fig.3.2 Crossover Connection



3.1 Parameter Configuration through IE

The default IP of the camera is 192.0.0.64 with 8000 as the default port, admin is the administrator and 12345 is the default password. The administrator can create up to 15 separate operators with different rights. To login the camera through IE, input the IP address in the address column and the Login dialogue box will display as Fig. 3.3. Input your user name and password, and then click Login to enter the Preview page. Double click the Camera 01 channel or Preview button to view the menu as Figure 3.4. Right click the Camera 01 channel and the Main Stream, Sub Stream and Open Sound options will be displayed. Select the Open Sound option.

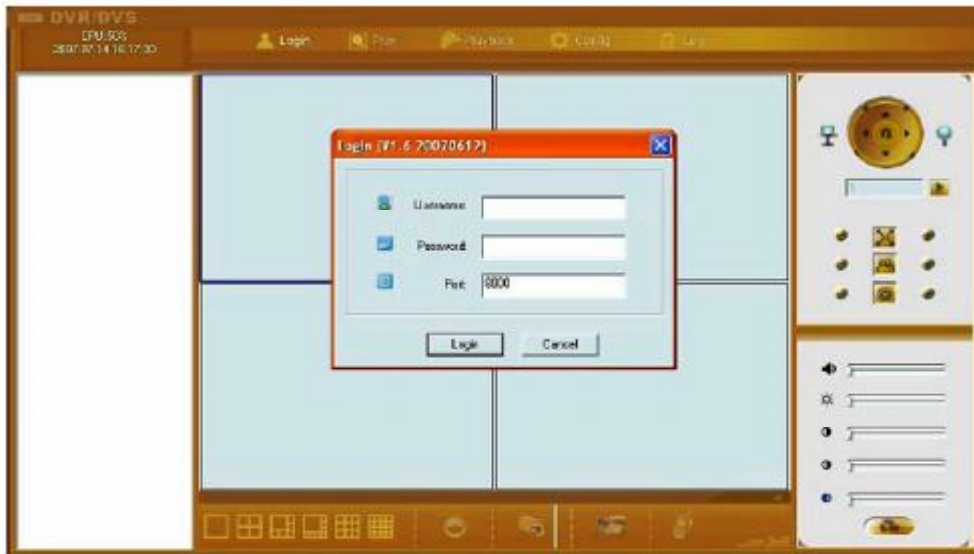


Fig. 3.1.1 Login Interface



Fig. 3.1.2 Preview Interface

It supports Playback and Log functions. To set the camera parameters through IE browser, click Config and wait for the Remote Parameters Config dialogue box to display and then set the parameters such as IP address, etc. as required.

For more specific information regarding Remote Parameters Config, please refer to the Client Software in remote-distance parameter settings. Instructions can be found in the client software path of Start → Program→ client software after installation.

Server Configuration Information			
Device name	Embedded Net DVS	Cycle record	NO
Device ID	88	Enable scaler	Off
No of Channels	1	HDD number	0
Alarm input number	1	Alarm output	1
Device type	IPCAMELA		
Serial number	DS2CD892FP0020081124AACH260036578WC		
NIC type	10M/100M auto	MAC address	00:40:3f:bf:92:b2
IP address	172.16.44.189	Port	8000
Subnet mask	255.255.255.0	Gateway	0.0.0.0
Remote host IP	0.0.0.0	Remote host port	0
Multicast IP	0.0.0.0	HTTP port	80
NAS host IP	0.0.0.0	NAS directory	
RTSP Port			
Server Version Information			
Firmware version	V2.0 build 080812	Hardware version	0x0
Encode version	V4.0 build 080729	Front panel	0

Restore Reboot Confirm

Fig. 3.1.3 Remote Parameters Config

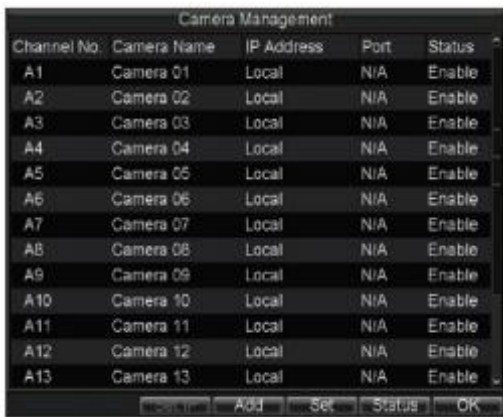
Note: Security level settings are necessary for browsing equipments by IE. Please open the IE browser and set the security level to “Low” in “Tools/ Internet Options/ Security/ Customise” or enable the “ActiveX Controls and Plug-Ins” directly.

3.2 Parameter Configuration through Client Software

Please refer to the client software instruction manual on the CD supplied with your I.P camera.

3.3 Parameter Configuration through DVR9K

Before configuration, please make sure that IP cameras are already connected to the same network. Enter camera management interface Menu→ Configuration Management→ Camera Configuration. Select Add, enter IP Channel Settings interface.



Channel No.	Camera Name	IP Address	Port	Status
A1	Camera 01	Local	N/A	Enable
A2	Camera 02	Local	N/A	Enable
A3	Camera 03	Local	N/A	Enable
A4	Camera 04	Local	N/A	Enable
A5	Camera 05	Local	N/A	Enable
A6	Camera 06	Local	N/A	Enable
A7	Camera 07	Local	N/A	Enable
A8	Camera 08	Local	N/A	Enable
A9	Camera 09	Local	N/A	Enable
A10	Camera 10	Local	N/A	Enable
A11	Camera 11	Local	N/A	Enable
A12	Camera 12	Local	N/A	Enable
A13	Camera 13	Local	N/A	Enable



No.	IP Address	Channels Type	Serial No.	Subnet	
1	192.0.7.130	1	IPC	200235391	255.255.255.0

IP Channel No.	D1
IP Address	192.0.7.130
Manage Port	8000
Channel Port	1
User Name	admin
Password	****

If the IP camera is the same segment with the DVR, please select the IP device in the list, and then input the correct user name and password in the blanks below. Select OK and finish adding the device.



No.	IP Address	Channels Type	Serial No.	Subnet	
1	192.0.7.130	1	IPC	200235391	255.255.255.0

IP Channel No.	D1
IP Address	192.0.7.130
Manage Port	8000
Channel Port	1
User Name	admin
Password	****



Channel No.	Camera Name	IP Address	Port	Status
A5	Camera 05	Local	N/A	Enable
A6	Camera 06	Local	N/A	Enable
A7	Camera 07	Local	N/A	Enable
A8	Camera 08	Local	N/A	Enable
A9	Camera 09	Local	N/A	Enable
A10	Camera 10	Local	N/A	Enable
A11	Camera 11	Local	N/A	Enable
A12	Camera 12	Local	N/A	Enable
A13	Camera 13	Local	N/A	Enable
A14	Camera 14	Local	N/A	Enable
A15	Camera 15	Local	N/A	Enable
A16	Camera 16	Local	N/A	Enable
D1	IPCamera 01	192.0.7.130	8000	Connect

If the IP camera is not online or is not in the same segment with DVR, the IP of this device can be input manually. Select OK and finish adding the device. If the IP camera is not online, the connection will be setup automatically when it online; if the IP camera is not in the same segment with DVR, the connection will be setup after adding it. If Status is Connected, it means device successfully added else please examine the network or adding procedure. Finish adding all IP devices.

4. WAN Access

IP cameras have their own network capability and can be connected direct through a network for viewing only. In most circumstances however they would be connected through a DVR and do not have to be setup in the modem/router. If they are used independently then each IP camera must be allocated a unique IP address but can use the same port number.

4.1 WAN access using independent IP Camera not connected through DVR

1. Access to the network can be made via Internet Explorer by specifying the static IP address of the camera or via the client software. The client software can be setup using the Server Properties by setting the Server type, selecting Register Normal to request a static IP address and entering the static IP address. The port number is 8000.

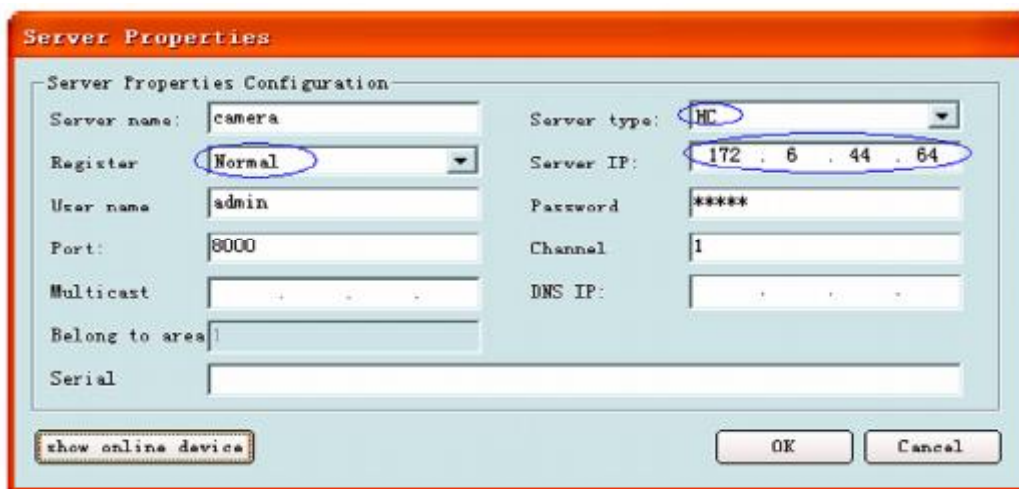


Fig.4.1.1 Static IP Configuration dialogue box

2. If the network camera is not connected to a DVR and has a static IP set in a modem/router over a network, the TCP port (default 8000) and HTTP port (default 80) require port mapping to allow access via the client software or IE.

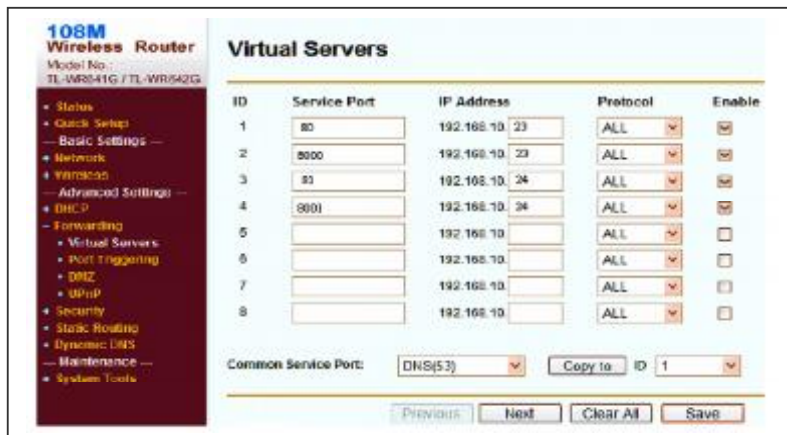


Fig.4.1.2 Port mapping

4.2 WAN Access with a dynamic IP address not connected through a DVR

By setting Register in client software to Normal Domain, a dynamic name can be entered in Domain name box. Of course the dynamic name must be registered with a dynamic IP site such as www.dydns.com. The dynamic name will also work with I.E.

The image shows a 'Server Properties' dialog box with the following configuration:

Server Properties Configuration	
Server name:	camera
Register:	Normal Domain
User name:	admin
Port:	8000
Multicast:	[empty]
Elong to area:	[empty]
Serial:	[empty]
Server type:	HC
Domain name:	[empty]
Password:	*****
Channel:	1
DNS IP:	[empty]

Buttons: show online device, OK, Cancel

Fig 4.2.1 Configuration of domain name in Client software

5. Common failures and maintenance

5.1. Power on failure

Check if the power plug is fixed into the socket and if the power supply is working correctly.

5.2. Image blurred

Check if the lens connector is correct. There are two types lens mounts i.e C and CS which are different. Adjust lens focus and back focus.

5.3. SD card not working properly

Check if the SD card is fitted correctly in the IP camera and the SD card slot is not damaged. If the system does not recognise the SD card, check if the SD card is compatible.

5.4. What's the relationship between the image quality, resolution and browsing speed under different broadband bandwidths?

Under certain bandwidths, the image quality, resolution and browsing speed have a mutual relationship. The higher the image quality, the higher the resolution, which will inevitably consume more bandwidth. Thus browsing will become slower as resources required become greater. In practical applications, the image quality, standard and best browsing speed can be adjusted to suit the bandwidth available.

5.5. Unable to connect

Check if the network works correctly and if the Link led is on.

5.6. Can network camera be used in glaring environment?

Glare caused by direct sunlight or halogen lamp will cause the CCD sensor to overload, because long-time exposure to strong light may burn the image sensor.

5.7. How long can the network of IP camera extend?

Generally, the LAN Cable or UTP Cable can extend to 100m.

Technical Specification for IP-CAM710

Model	IP-CAM710
Image Sensor	1/3 inch SONY Super HAD CCD
Effective Pixels	PAL:752(H)×582(V) NTSC:768(H)×494(V)
Lens	3.5–9mm@F1.2/Φ14/ manual Iris lens
Signal System	PAL/NTSC
Electronic Shutter	1/50(1/60)s--1/100,000s
Min. Illumination	0.1Lux @ F1.2
Day&Night	Electronic
S/N Ratio	More than 48dB
Video Output	540TVL,1Vp-p Composite Output(75Ω/BNC)
Video Compression	H.264/MPEG-4
Video Output	32 K ~ 2M, adjustable(8Mbps,maximum)
Audio Compression	OggVorbis
Image Resolution	704x576,640x480,528x384,704x288,352x288,176x144
Frame Rate	25fps(704x576), 30fps(704x480)
Motion Detect	Supported
Dual Stream	Supported
SD Card Local Recording	Supported
Heartbeat	Supported
Password Protect	Supported
Protocols	TCP/IP,HTTP,DHCP,DNS,RTCP, PPPoE (FTP,SMTP,NTP,SNMP addible)
Adjustment Range	355° Pan 90° Tilt
Voice Talk Input	1 channel (2.0 ~ 2.4Vp-p, 1kΩ)
Voice Output	1 channel (Line level, 600Ω)
Communication	1 RJ45 10M/100M self-adapted Ethernet port and 1 RS-485 interface
Alarm Input	1 channel relay input
Alarm Output	1 channel relay output
Working Temperature	-10~60°C
Power Supply	12VDC, ±10%, Supports PoE (Power over Ethernet)
Power Consumption	4W MAX
Dimensions (mm)	φ145x132.8
Weight	900g

All specifications are approximate. Kovert.com reserves the right to change any product specification or features without notice. Whilst every effort is made to ensure that these instructions are complete and accurate, kovert.com cannot be held responsible in any way for any losses, no matter how they arise, from errors or omissions in these instructions, or the performance or non-performance of the camera or other equipment that these instructions refer to.



WEEE/CG01355

This symbol on the products and/or accompanying documents means that used electronic equipment must not be mixed with general household waste. For treatment, recovery and recycling please return this unit to your trade supplier or local designated collection point as defined by your local council.