



Instruction Manual

IP-CAM852

© 2023 System Q Ltd

ZipNVR.com

Table of Contents

Part 1 Introduction	1
1 Key Features - IP-CAM852W	1
2 Essential Tools and ZipFinder	1
Part 2 Connections and Dimensions	2
1 IP-CAM852W	2
Part 3 Mounting and SD Card Installation	3
1 Eyeball	4
Part 4 Setup Options	5
1 PoE ZIP NVR	5
2 Non-PoE ZIP NVR	6
Part 5 How to Login via Browser	7
Part 6 Browser Menu Settings	9
1 IP-CAM852W	9
Part 7 Extra Resources	14
1 ZipNVR.com Website	14
2 Adding IP Cameras to a ZIP recorder	14
3 AI Setup	14
4 ZIP Firmware	15
Part 8 General Maintenance	16
Part 9 Specifications	17
1 IP-CAM852W	17
Part 10 Conditions	18
Index	19

Introduction

1.1 Key Features - IP-CAM852W

The IP-CAM852W is a eyeball style camera designed for the more budget conscious IP systems. The eyeball supports motion detection and has a tough metal exterior, ideal for both outdoor and indoor uses. Up to 45m IR range (true day/night filter), 2MP resolution, built in PoE, H265 and H264 codec.

- PoE & 12V
- SD card slot
- Micro SD Card Slot
- Audio In - Audio Out
- 2.8-12mm Manual Vari-focal lens
- 2MP
- IR
- Perfect for ZIP NVR Kits

1.2 Essential Tools and ZipFinder

To install this product you will need:

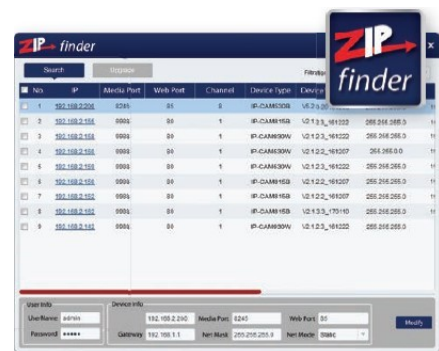
- Laptop / Windows PC
- Screwdriver
- Drill
- Hammer
- ZIP NVR or DVR
- PoE Switch / 12V DC power supply
- Ethernet CAT5/5e/6 Cable

ZipFinder - IP Camera Configuration Tool

ZipFinder is a Windows PC software for discovering and configuring IP cameras a network.

Use ZipFinder on non-PoE installs, to help problem solving issues such as forgotten or unknown IP Addresses.

To download visit ZipNVR.com



Connections and Dimensions

2.1 IP-CAM852W



Powering the camera

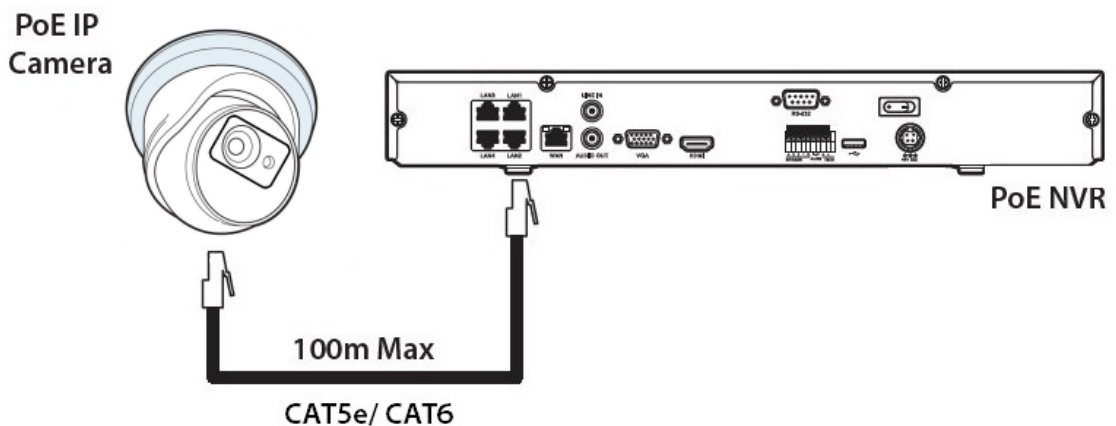
Option 1 - Power the camera from 12V DC (via the 2.1mm DC Socket), the current consumption is 750mA.

The camera is polarity sensitive so connections must be correctly made.

Option 2 - Power the camera using a PoE 48V RJ45 Socket

When connecting ZIP PoE NVR plug the camera directly into the NVRs built in PoE switch.

The camera should automatically become visible after being connected for approximately 1 minute.



Dimensions



*Dimensions Exclude Bracket

Mounting and SD Card Installation

For local recording on the camera itself an SD card must be installed.

Recording time will vary dependent upon: SD card size and encoding settings

32GB SD Card ≈ 31 hours

64GB SD Card ≈ 62 hours

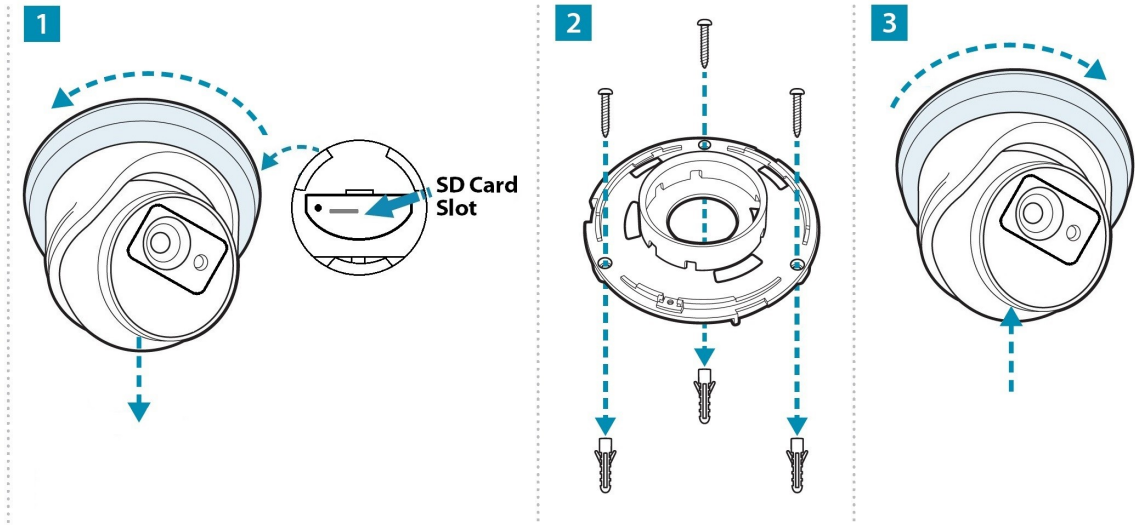
128GB SD Card (MAX) ≈ 124 hours

256GB SD Card (MAX) ≈ 248 hours

The camera can be set to only record when triggered via motion detection, alarm input or AI smart, this maximises the recording time achievable.

Remove power from the camera when inserting / removing the SD card.

3.1 Eyeball



A template is provided in the box for marking the hole positions for the fixing screws.

Setup Options

4.1 PoE ZIP NVR

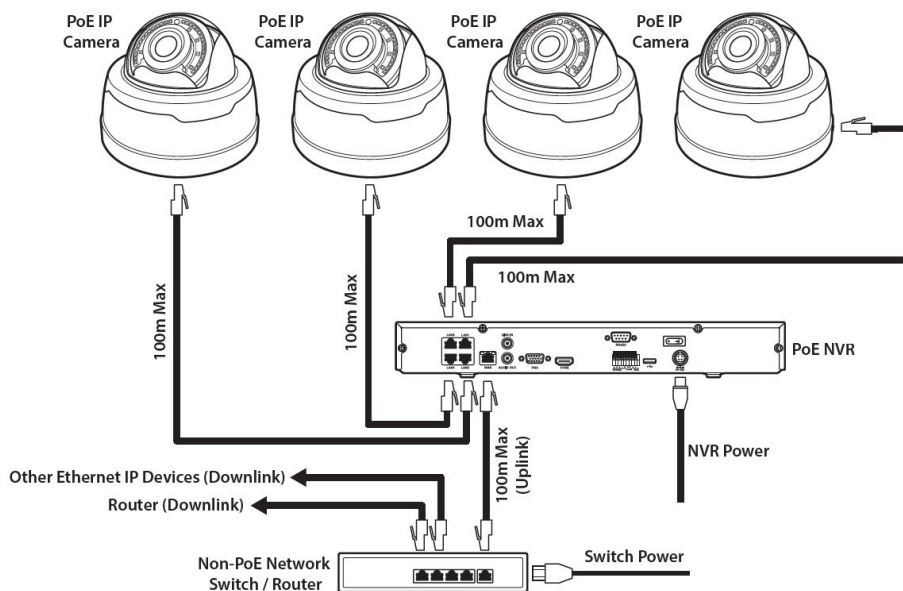
When connecting to a **ZIP PoE NVR** plug the camera directly into the NVR's built in PoE switch.

The camera should automatically become visible after being connected for approximately 1 minute.

The 100m distance for a camera can be increased when the PoE Mode is set to EPoE.

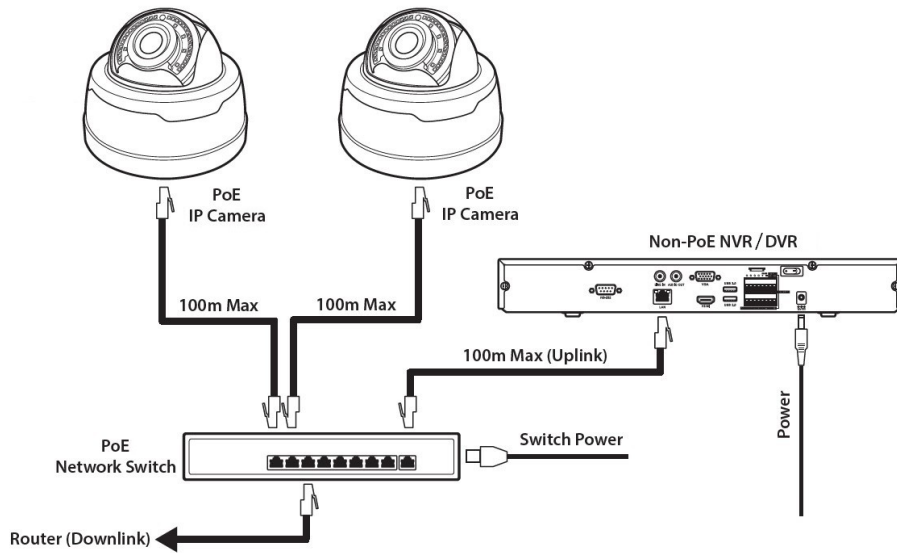
In the menu on a ZIP PoE NVR go to:-

Video > IP Channels > PoE Mode



4.2 Non-PoE ZIP NVR

When connecting cameras to a **Non-PoE NVR**, they are first connected to an external network switch which is in-turn connected to the NVR as shown below.



See [Extra Resources](#) ¹⁴ for more information on **Adding IP Cameras manually** to a ZIP Recorder.

How to Login via Browser

The AI smart features can be configured in a ZIP recorder or directly in the browser interface of the camera (standalone)

Only one smart detection feature can be enabled at any given time.

See the NVR or DVR manual for information on configuring these features with a ZIP recorder.

Follow the steps below for configuring the settings directly in the camera via a browser for standalone setup.

You will need...

- Windows Based PC/ Laptop connected to router/ PoE switch
- ZipVision Pro App on Mobile Device
- PoE Switch connected to Network/ Router
- Ethernet network cable
- [ZipFinder](#) software, available via this link below:-

www.softcctv.com/store/Item/Zip-Finder-IP-CCTV-Security-Camera-Discovery-Tool

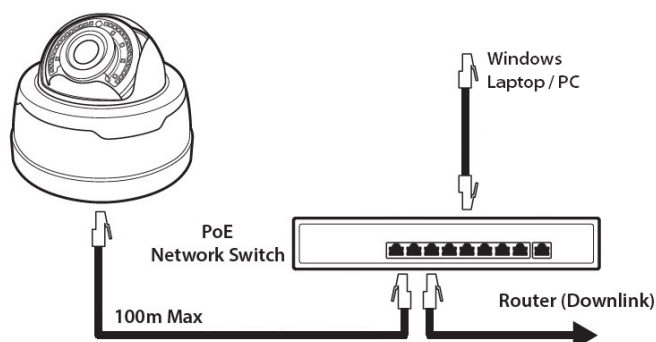
NOTE If the PC being used is on a different IP range to the PC then add the IP range of the camera to the PC using the below guide:-

PDF Version :- http://www.cctvmanuals.com/pdf/tips/How_to_add_an_IP_Range.pdf

HTML Version :-

http://www.cctvmanuals.com/tips/How_to_add_an_IP_Range/index.html

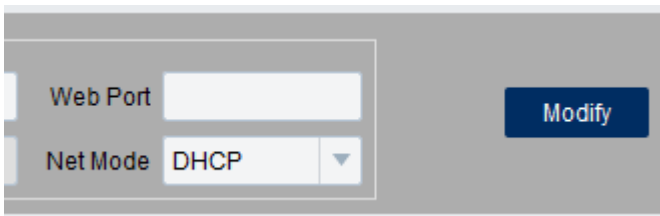
1. Plug the camera's RJ45 port with a network cable into a PoE switch



2. Using ZipFinder on a Windows Based PC/ Laptop **Search** and then tick the camera



3. Select Net Mode = **DCHP**, then click **Modify**



4. **Search** again, to get the updated IP address.

5. **Select** the IP address of the camera, Internet Explorer will pop-up, and ask to download and install the plug-in.

6. **Download, install** and follow the steps for the plug-in installation, then re-load the browser by **selecting** the IP address again.

5. Login to the IP Camera, the **default** login details are:-

Default IP	192.168.10.1
DCHP	Off
User Name	admin
Password	777777

Browser Menu Settings

6.1 IP-CAM852W

The menu can be configured directly in the browser interface of the camera (standalone), in Remote Setting you will find the menu settings below:-

Video	Live		Name	Camera (user editable)
			Date Format	DD/MM/YYYY / MM/DD/YYYY / YYYY/MM/DD
			Time Format	24 Hour / 12 Hour
			Flicker Control	50Hz / 60Hz
			Show Name	Enable / Disable
			Show Time	Enable / Disable
			OSD Self-adaptive	Enable / Disable
			Save / Refresh	
		Image Control		Image Setting
				Automatic Mode / Colour Mode / Black White Mode / Image Mode / Schedule
				IR-CUT Delay
				1 -36 (Default 2)
				IR-LED
				SmartIR / Manual
				Angle Trad
				180 / 0
				Mirror
				Disable / Vertical / Horizontal / All
				Exposure Compensation
				DWDR / HLC / BLC / Disable
				White Balance
				Automatic mode / Manual
				Shutter
				Automatic mode / Manual
				Time Exposure
				1/5 to 1/200000 / Flickerless
				3D Noise Reduction
				OFF / Automatic Mode / Manual
				Save / Default / Refresh
		Privacy Mask		Enable / Disable
Record	Encode	Mainstream	Resolution	1920 x 1080
			FPS	1 - 30 (Default 30)
			Video Code Type	H.265 / H.264
			Video Code Level	Main Profile
			Bitrate Control	CBR / VBR
			Bitrate Mode	Predefined / User-Defined

			Bitrate	256 to 4096 (Default 4096)		
			I Frame Interval	1 to 120 (Default 60)		
			Audio	Enable / Disable		
					Save / Refresh	
		Substream			Resolution	640 x 480
					FPS	1 – 20 ((Default 20))
					Video Code Type	H.265 / H.264
					Video Code Level	Main Profile
					Bitrate Control	CBR / VBR
					Bitrate Mode	Predefined / User-Defined
					Bitrate	128 to 1024 (Default 512)
					I Frame Interval	1 to 80 (Default 40)
					Audio	Enable / Disable
		Record	Record	Record	Stream Mode	Mainstream / Substream
Record	Enable / Disable					
PreRecord	Enable / Disable					
Netbreak	Enable / Disable					
						Save / Refresh
		Schedule	User Definable			
			Save / Refresh			
Event	Setup	Motion	Enable	Enable / Disable		
			Sensitivity	1 to 8		
					Save / Refresh	
	Alarm	Post Recording	OFF / 5s / 10s / 20s / 30s			
			Send Email	Enable / Disable		
			FTP Picture Upload	Enable / Disable		
			Enable Record	Enable / Disable		
					Save / Schedule / Refresh	
Network	General	General	DCHP	Enable / Disable		
			IP Address	User-definable		
			Subnet Mask	User-definable		
			Gateway	User-definable		
			DNS 1	User-definable		
			DNS 2	User-definable		
			Video Encryption Transmission	Enable / Disable		

			Save / Refresh	
Port Configuration	HTTP Port	User-definable		
	Client Port			
	HTTPS Port			
	RTSP Port			
	P2P Enable	Enable / Disable		
	Save / Refresh			
Email		Email	Enable / Disable	
		Encryption	OFF / SSL / TLS / Automatic mode	
		SMTP Port	1 - 65535	
		SMTP Server	User-definable	
		Username		
		Password		
		Sender		
		Receiver 1		
		Receiver 2		
		Receiver 3		
		Interval		
Save / Test / Refresh				
RTSP		RTSP Enable		
		Anonymous Login	Enable / Disable	
	Instruction: rtsp://IP:RtspPort/ch01/A A: 0(main stream), 1(sub stream), 2(mobile stream)			
	Save / Refresh			
DDNS		DDNS	Enable / Disable	
		Server	NO IP / DYNDNS	
		Hostname	User-definable	
		Username	User-definable	
		Password	User-definable	
Storage	Disk	Select Disk		
		Overwrite	OFF / Auto	
		Save / Format Hard Disk / Refresh		
	Audio	Enable Audio	Enable / Disable	
		Output Volume	0 – 8	
		Input Volume	0 – 8	
		Audio Code Type	G711A / G711U	
		Save / Refresh		
	Cloud	Cloud Storage	Enable / Disable	

		Cloud Type	Dropbox			
		Driver Name	Customise (Default IP-PTZ650W)			
		Refresh / Save / Activate Cloud				
System	General	Date and Time	Time Setting mode	Static / NTP server synchronization		
			Date Format	Day/Month/Year Year-Month-Day Month/Day/Year		
			Time Zone	GMT -12:00 to GMT + 13:00		
			Time Format	24Hour / 12 Hour		
			System Time	User-definable		
			Server Address	Time.windows.com / time.nist.gov / pool.ntp.org / Define User		
			Save / Synchronize computer time / Refresh			
			Daylight Saving Time	Daylight saving time	Enable / Disable	Set by week / set by date
		Start Time		User-definable		
		End Time		User-definable		
		Time Offset		1Hour / 2 hours		
		Save / Refresh				
		Multi-User	Customize Each user	Password (Edit)	Username	User-definable
					Password	User-definable
				Password Strength	User-definable	
				Confirm		
	Refresh					
	Maintain	Log	Log Type	System / CON. / Alarm / Account / Record / Storage / Network / All	Search	
				Start Time		User-definable
			End Time	User-definable		
Load Default		All / Video / Record/ Event / AI / Network/ Storage / System				
		Save / Refresh				
Upgrade		Path	Search Local Files	Upgrade		
		Save / Load	Import File	Search Local Files	Import	
Export File Name			Search Local Files	Export		
Auto Reboot		Auto-maintenance Time	Enable / Disable			
			Date / Week / Month			

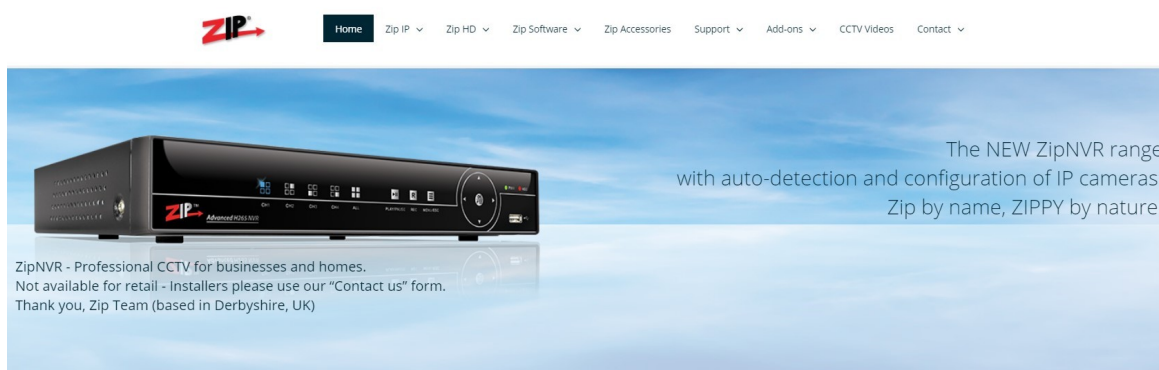
			Mon / Tues / Wed / Thur / Fri / Sat / Sun
			Time
			Save / Refresh / Reboot
Information	Device ID		
	Device Name		
	Device Type		
	Hardware Version		
	Software Version		
	Web Version		
	Mac Address		
	P2P ID		
	Refresh		

Extra Resources

7.1 ZipNVR.com Website

The Zip NVR has a range of information on the cameras and NVRs, manuals, software, tools and support:-

www.zipdvr.com



7.2 Adding IP Cameras to a ZIP recorder

How to guide on Adding IP Cameras:-

www.zipdvr.com/howto/TIP459-How-To-Add-IP-Cameras.html

7.3 AI Setup

See the ZIP NVR full manual for more information on AI setup;

Note: AI Features will vary depending on model

Full Instruction Manual



<https://systemq.com/PDF/manual/xZIP4.pdf>

7.4 ZIP Firmware

Firmware for the zip products are available online:-

www.zipdvr.com/firmware.html

Compare the firmware in the product against that available online.

General Maintenance

- Routinely clean the camera to prevent dust build up as this can effect the performance of the camera. It is recommended to use a damp non-abrasive microfibre cloth.
- Routinely check the connections for power and data to ensure no water ingress and corrosion.
- Check that the cameras are firmly attached to the wall or mounting bracket.
- Check playback in the recorder to ensure the camera is recording and triggering properly.

Specifications

9.1 IP-CAM852W

Image Sensor	1/ 2.7" Progressive CMOS
Resolution	2MP 1920(H)×1080(V)
Lens Type	2.8-12mm Manual Vari-focal Lens
Shutter	1/5 ~ 1/20000s
Day/Night	Mechanical (True Day-Night)
Min. Illumination	0 (With IR On)
IR Range	Up to 45m
Digital Noise Reduction	3D DNR
Video Compression	H.264 / H.265
Video Bitrate	128Kbps ~ 4Mbps
Stream Options	Mainstream, SubStream
System Compatibility	ONVIF (Profile S, Profile G, Profile T)
Connection	RJ45 10M / 100M Ethernet PoE
SD Card	Micro SD Card Slot (up to 256GB)
Audio (RCA)	1 Input / 1 Output
Input Voltage	PoE or 12V DC 700mA (PSU Required)
Consumption	8W Max
Operating Temperature	From -30 to 55 deg°C
Backlight Control	D-WDR
Use	IP66 For External Use
Dimensions	Ø135mm x (H) 127mm

Conditions

All specifications are approximate. System Q Ltd reserves the right to change any product specifications or features without notice. Whilst every effort is made to ensure that these instructions are complete and accurate, System Q Ltd cannot be held responsible in any way for any losses, no matter how they arise, from errors or omissions in these instructions, or the performance or non-performance of the equipment that these instructions refer to.



WEE/CG0783SS

This symbol on the products and/or accompanying documents means that used electronic equipment must not be mixed with general household waste. For treatment, recovery and recycling please return this unit to your trade supplier or local designated WEE/CG0783SS collection point as defined by your local council.



RoHS ✓

© Copyright 2020

ZIP and NiteDevil are registered trademarks of System Q Ltd, Chesterfield, Derbyshire. S40 2WB

Index

- C -

Checking and cleaning the camera 16

- D -

Download 1

- E -

Extra Resources and help 14

Extras 1

- I -

Installation 3

- L -

Login via browser interface 7

- M -

Maintenance 16

- R -

Recording 3

- S -

SD Card 3

Setup and Connection Options 5

Software 1

Specification 17

- T -

Tools 1

- Z -

ZipFinder 1