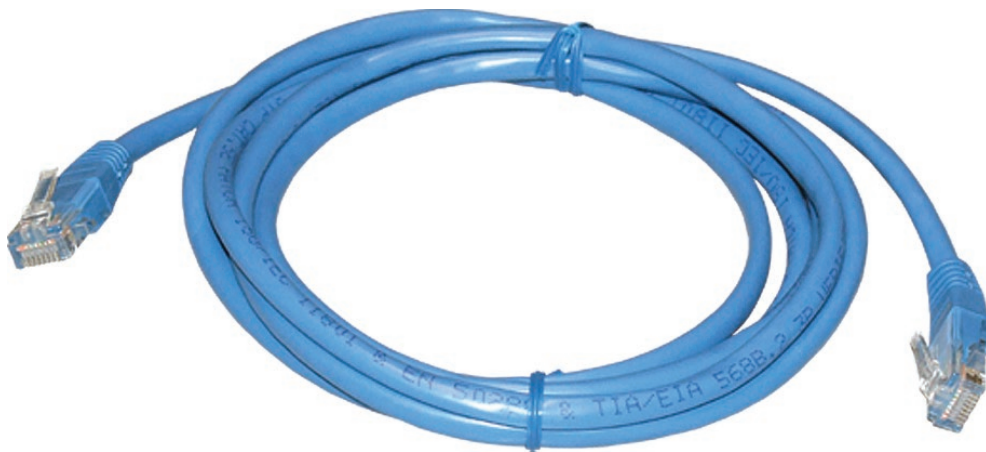


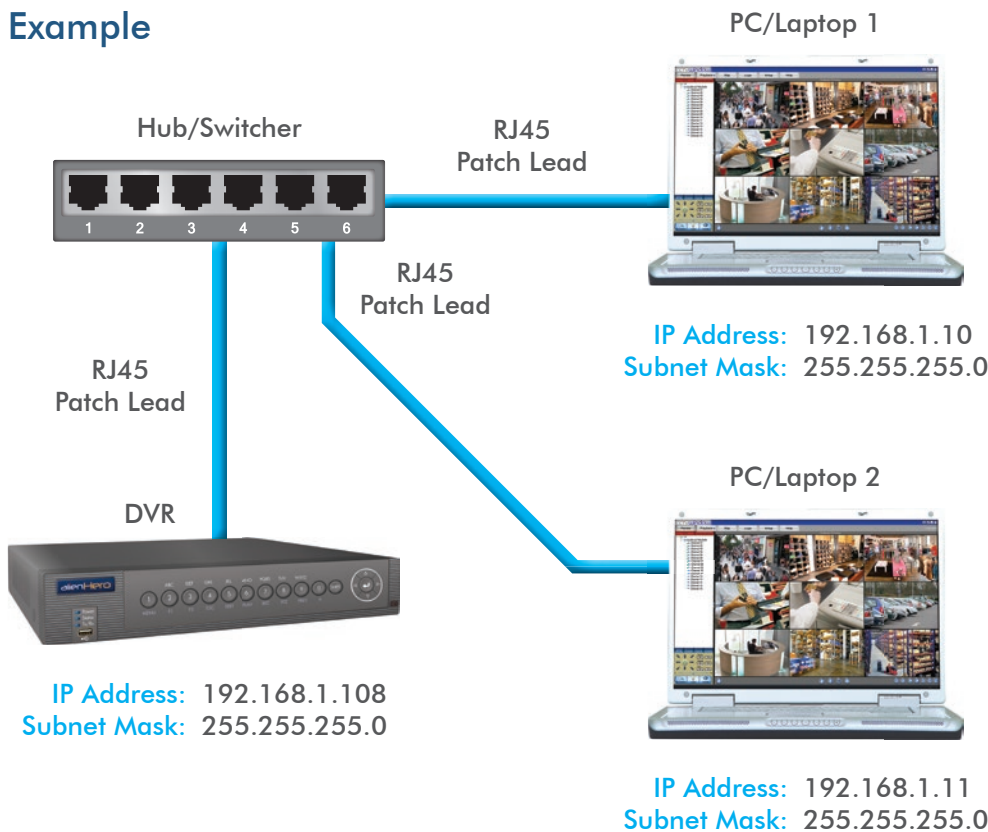
RJ45 Patch/Straight Leads In Blue



Our most popular networking leads

RJ45 patch (straight) leads in blue. Typically used in the CCTV world when connecting a compatible network DVR to a network.

Example



NOTE: The DVR and PCs Subnet Mask must be identical, but the IP Address' must be unique to each device.

For step by step instructions on networking an AlienDVR see online tip 226 ▶▶▶



Features

- Great for Networking
- 3 Length Options Available

Specification

FUNCTION	SPECIFICATION
Build	Metal/Plastic Case
Colour	Blue
Input A	RJ45 8P8c Plug
Input B	RJ45 8P8c Plug
Pack Size	1

Options Available

PART CODE	DESCRIPTION
NET982	2m Cable
NET985	5m Cable
NET987	15m Cable

Other Products To Consider



2m Crossover Lead
NET992




5m Crossover Lead
NET995

The Expert's Advice...



"Don't confuse a patch lead with a crossover lead, which is wired differently and typically used for connecting a DVR directly to a PC."

All specifications are approximate. System Q Ltd reserves the right to change any product specifications or features without notice. Whilst every effort is made to ensure that these instructions are complete and accurate, System Q Ltd cannot be held responsible in any way for any losses, no matter how they arise, from errors or omissions in these instructions, or the performance or non-performance of the equipment that these instructions refer to.

 This symbol on the products and/or accompanying documents means that used electronic equipment must not be mixed with general household waste. For treatment, recovery and recycling please return this unit to your trade supplier or local designated collection point as defined by your local council.

WEE/CG0783SS