

SEE520W fixed lens Internal HD-TVI & Analogue Camera

NOTE: This document is used in conjunction with the manual supplied for this product

The SEE520W Internal TVI/Analogue Camera with fixed 3.6mm board lens is now supplied with a joystick controller for menu control at no extra cost.

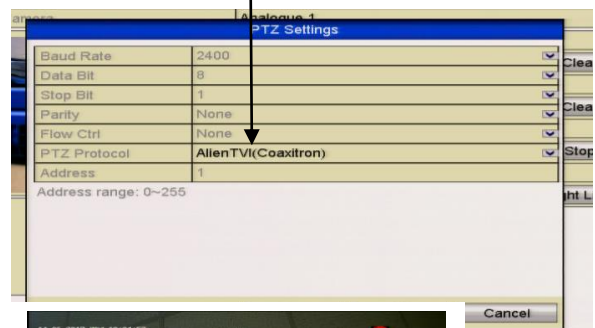


Both cameras have Coaxitron Control for changing the OSD menu specifications via the DVR but now you can have the same camera with a joystick controller as well. The menu settings are detailed in the separate instruction manual supplied.

Menu Access via DVR

Access to the camera menu is via the menu buttons on the camera or via the Up the Co-ax connection. Access by the menu buttons is described below. To use the Up the Coax connection, this can be accessed using the PTZ menu in the MEGA TVI or MAX TVI DVRs using the AlienTVI(Coaxitron) protocol. This protocol is generally set in the PTZ Settings menu as default but if not, select using the following:

Enter the DVR **Menu**, click on **Video**, **PTZ** and **select the channel** number of the TVI camera connected to the DVR. Then click on **PTZ Settings** and select **AlienTVI(Coaxitron)** and click **OK**.



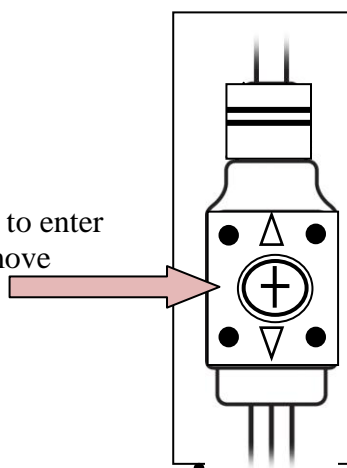
Now click on the **PTZ** button at the bottom of the screen and a full screen picture will be displayed with the PTZ control menu. Click on the **IRIS+** button to display menu. Use the directional arrows to move up and down or right to select options.



SEE520W fixed lens Internal HD-TVI & Analogue Camera**Using the SEE520W Joystick Controller to access the Menu**

The camera comes with a fly lead with joystick controller, 2.1 jack connector for power, a green BNC connector for HD-TVI and a yellow BNC connector for an analogue. Connect the HD camera to control equipment via a female BNC-BNC lead. When using a co-ax type cable such as RG59 or similar, the outer braid of the co-ax provides the “0V GROUND” connection and the inner core provides the “Video” connection. The separate analogue (CVBS) output is primarily available for setup purposes but can be used for viewing via an analogue monitor.

Press the centre button straight down (see arrow) to enter the menu and use Left, Right, Up and Down to move through and amend menu settings.

**SEE520W Camera Specifications**

Lens Size	3.6mm Board Lens	Sensor	1/2.8" 2.1MP Sony CMOS
Resolution	1080P / 720p	Input Voltage	12v DC
Day/Night	Mechanical True Day/Night	Power/Current	110mA
Video Outputs	1 x HD-TVI & 1 x Analogue	Power Plug	2.1 mini jack plug
Min.Illumination	0.01 Lux	Menu Access	Coaxitron / Joystick Control
Sens-UP	x2 ~ x8 / Off	White Balance	Auto/Autoext/Preset/Manual
WDR	True WDR	Dimensions	100mm(W) x 70mm(H)
Digital Zoom	8x Digital Zoom	Build/Colour	Plastic- White
Motion Detect	Available	Privacy Masking	Available – 16 Masking Zones
AGC	Selectable in Exposure menu	Noise Reduction	Low / Medium / High
Defog Option	Available	BLC	Backlight Compensation/HLC/WDR



WEE/CG0783SS

This symbol on the products and/or accompanying documents means that used electronic equipment must not be mixed with general household waste. For treatment, recovery and recycling please return this unit to your trade supplier or local designated collection point as defined by your local council.

All specifications are approximate. Kovert.com reserves the right to change any product specification or features without notice. Whilst every effort is made to ensure that these instructions are complete and accurate, kovert.com cannot be held responsible in any way for any losses, no matter how they arise, from errors or omissions in these instructions, or the performance or non-performance of the camera or other equipment that these instructions refer to.