

SEE600 Internal/External HD Camera with IRs

The SEE600 has multi format HD modes for TVI, AHD, CVI and CVBS and is fitted with a fixed 3.6mm board lens and 3mpx CCD

Features:

Multiple HD formats (TVI, AHD, CVI & CVBS)

1080P HD & Analogue (CVBS) 700TVL

2x High Power IRs < 20m range

3 MegaPixel CCD

IR cut filter for realistic colour reproduction

Sens-Up (NiteDevil) feature for low light conditions

Privacy masking & Motion Detection

WDR (Wide Dynamic Range) facility

UTC (Up the coax menu access)

Full OSD menu



Special Features

The SEE600 cameras produce exceptional quality colour images using the built-in IR cut off filter.

The SEE600 is a multi-format HD camera with TVI, AHD and CVI HD modes or a CVBS mode for analogue.

In HD-TVI mode the cameras have the Coaxitron Control facility for changing the OSD menu specifications via the DVR or remote network connection.

This camera has the Sens-Up (NiteDevil) menu feature for reducing shutter speed for improving light capture at night and used with the brightness control and IR LEDs can produce very good night time pictures.

Mounting the Camera

The camera is primarily for outdoor mounting on a wall, building or under a lintel but could also be used inside in an appropriate building. First unscrew the locking plate on the base of the camera using the tool provided. The camera eyeball that sits on four rubber pads can be lifted clear of the base after removing the camera shroud. There are four screws and wall plugs supplied with the camera. Use these to mount the base with the black mounting plate located at the top. When secured adjust the eyeball with the IR sensor located at the bottom on the camera and refit the shroud. Loosely tighten the locking plate and check to ensure positioning of the eyeball is correct. Re-tighten locking plate.

Powering the Camera

The SEE880 draws 12V DC 425mA when IRs are on, and 110mA when IRs are off. It should be noted that extra headroom is required when the camera is first powered up so we recommend connecting it to a 12v DC regulated power supply of a minimum amperage of more than 600mA. The camera is provided with a fly lead with a mini power 2.1mm DC socket. The camera is polarity sensitive so connections must be correctly made.

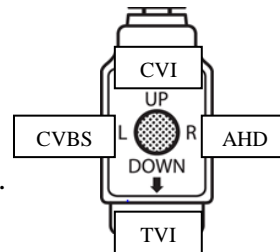
Connecting the camera to control equipment

The dome camera comes with a fly lead for power and TVI/CVBS/CVI/AHD video mode selected using the joystick control via a BNC output. The CVBS mode is the standard analogue connection and the others, versions of HD. Connect the HD camera to control equipment via a female BNC-BNC lead. When using a co-ax type cable such as RG59 or similar, the outer braid of the co-ax provides the “0V GROUND” connection and the inner core provides the “Video” connection. The separate analogue (CVBS) output is primarily available for setup purposes but can be used for viewing via an analogue monitor.

These cameras can be viewed in TVI, AHD, CVI or CVBS modes. To select a mode first power the camera up when it is connected to a monitor or DVR and monitor, and see if the required format displays a colour picture. If not or in black and white, move the joystick button down for **5 seconds** to select TVI mode, left for CVBS (analogue) mode, right for AHD and up for CVI.

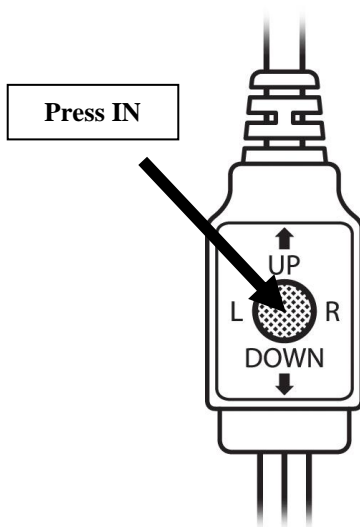
(Note that picture may be in b/w in low light levels or the cellophane lens cover has not been removed).

When you are in correct format, press the joystick button in, momentarily, if you wish to access the menu.



OSD Menu

The SEE600 has an on screen display menu. This can be accessed using the joystick on the camera.



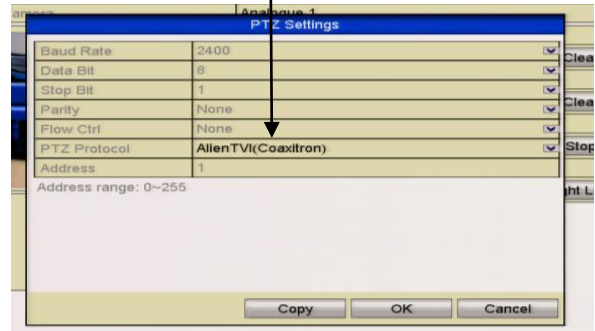
Press the centre button **IN** (see arrow) to enter the menu and use Left, Right, Up and Down to move through and amend menu settings.

Alternatively use the TVI DVR PTZ menu as detailed in “Menu Access via DVR” below.

Menu Access via TVI DVR using Coaxitron

Access to the camera menu is via the menu buttons on the camera or via the Up the Co-ax connection. Access by the menu buttons is described below. To use the Up The Coax connection, this can be accessed using the PTZ menu in the MEGA TVI or MAX TVI DVRs using the AlienTVI(Coaxitron) protocol. This protocol is generally set in the PTZ Settings menu as default but if not, select using the following:

Enter the DVR Menu, click on **Video**, **PTZ** and **select the channel** number of the TVI camera connected to the DVR. Then click on **PTZ Settings** and select **AlienTVI(Coaxitron)** and click **OK**.



Now click on the **PTZ** button at the bottom of the screen and a full screen picture will be displayed with the PTZ control menu. Click on the **IRIS+** button to display menu



Use the directional arrows to move up and down or left or right to select options.

OSD Menu

The following menu display is shown:

MAIN MENU	
<ul style="list-style-type: none"> ➤ 1. LENS 2. EXPOSURE 3. BACKLIGHT 4. WHITE BAL 5. DAY & NIGHT 6. NR 7. SPECIAL 8. ADJUST 9. EXIT 	<p style="text-align: center;">MANUAL</p> <p style="text-align: center;">←</p> <p style="text-align: center;">OFF</p> <p style="text-align: center;">ATW</p> <p style="text-align: center;">EXT ←</p> <p style="text-align: center;">←</p> <p style="text-align: center;">←</p> <p style="text-align: center;">←</p> <p style="text-align: center;">SAVE & END ←</p>

LENS	MANUAL DC ↵	Leave setting on Manual as fixed board lens fitted N/A
EXPOSURE ↵	SHUTTER AGC SENS-UP BRIGHTNESS D-WDR DEFOG RETURN	AUTO- 1/25,1/50,FLK,1/200,1/400,1/1000,1/2000,1/5000, 1/10000,1/50000, x2/x4/x6/x8/x10/x15/x20/x25/x30 0 ~ 15 OFF – AUTO ↵ x2,x4,x6,x8,x10,x15,x20,x25,x30 1 ~ 100 ON ↵ LEVEL 0 ~ 8 RETURN OFF – AUTO ↵ POS / SIZE ↵ GRADATION 0 ~ 2 DEFAULT ↵ RETURN ↵
BACKLIGHT	OFF	BLC ↵ LEVEL Middle / High / Low AREA ↵ POS / SIZE DEFAULT ↵ RETURN ↵ HSBLC ↵ SELECT Area 1 ~ 4 DISPLAY ON ↵ Pos / Size BLACK MASK ON / OFF LEVEL 0 ~ 100 MODE NIGHT ↵ AGC LEVEL 0 ~ 255 ALL DAY DEFAULT ↵ RETURN ↵

SEE600 Multi-Format HD Camera (TVI/AHD/CVI) & Analogue with IRs

<p>WHITE BAL</p>	<p>ATW AWC → SET ↵ INDOOR OUTDOOR MANUAL ↵ AWB</p>	<p>MANUAL WB BLUE 0 ~ 100 RED 0 ~ 100 RET ↵</p>
<p>DAY&NIGHT</p>	<p>EXT ↵ AUTO ↵ COLOR B&W ↵</p>	<p>D & N EXT D → N (DELAY) 0 ~ 60 Default 3 N → D (DELAY) 0 ~ 60 Default 3 RETURN ↵ D & N AUTO D → N (AGC) 1 ~ 255 Default 200 D → N (DELAY) 0 ~ 60 Default 1 N → D (AGC) 1 ~ 255 Default 80 N → D (DELAY) 0 ~ 60 Default 1 RET ↵ B / W BURST OFF / ON IR SMART ON ↵ Level 0 ~ 15 Default 3 Area ↵ Pos / Size Ret ↵ RETURN RET ↵</p>
<p>NOISE REDUCTION</p>	<p>NR ↵</p>	<p>N R 2 D N R Middle / High / Off / Low 3 D N R Middle / High / Off / Low RET ↵</p>
<p>SPECIAL</p>	<p>CAM TITLE OFF / ON ↵ D-EFFECT ↵ MOTION OFF / ON ↵</p>	<p>CAM TITLE < > CLR POS END D – EFFECT FREEZE OFF / ON (Mirror option suppressed) MIRROR OFF / MIRROR / V-FLIP / ROTATE NEG. IMAGE OFF / ON RET ↵ MOTION SELECT AREA 1 ~ 4 DISPLAY ON ↵ SENSITIVITY 0 ~ 100 COLOR GREEN / BLUE / WHITE / RED TRANS 1.00 / 0.75 / 0.25 / 0.00 ALARM VIEW TYPE OFF / BLOCK / OUTLINE / ALL OSD VIEW ON / OFF ALARM OUT ON / OFF TIME 0 ~ 15 RET ↵ DEFAULT ↵ RET ↵</p>

Menu Description

The following menu description gives more in depth information about the menu options. In some instances recommendations are made to hopefully enhance the results. However every installation will be different and there will occasions when alternative solutions may be more suitable.

LENS	MANUAL DC ↵	Leave setting on Manual as fixed board lens fitted N/A
-------------	----------------	---

EXPOSURE ↵	SHUTTER AGC SENS-UP BRIGHTNESS D-WDR DEFOG RETURN	AUTO- 1/25,1/50,FLK,1/200,1/400,1/1000,1/2000,1/5000, 1/10000,1/50000, x2/x4/x6/x8/x10/x15/x20/x25/x30 0 ~ 15 OFF – AUTO ↵ x2,x4,x6,x8,x10,x15,x20,x25,x30 1 ~ 100 ON ↵ LEVEL 0 ~ 8 RETURN OFF – AUTO ↵ POS / SIZE ↵ GRADATION 0 ~ 2 DEFAULT ↵ RETURN ↵
-------------------	---	---

SHUTTER

Auto / Manual

AUTO-1/25,1/50,FLK,1/200,1/400,1/1000,1/2000,1/5000,
1/10000,1/50000, x2/x4/x6/x8/x10/x15/x20/x25/x30

Shutter speed changes allow you to freeze moving objects without ghosting but reduce the amount of available light the faster the shutter operates. At night the slower the shutter speed the more light is available. The Flicker option sets the shutter speed at 1/250 that synchronises with fluorescent tubes so that the pulsing effect is minimised.

Recommendation is to leave this in Auto.

AGC

1 ~ 15 (Default = 15)

For better performance in low light conditions the AGC (Automatic Gain Control) can be increased. This has the effect of making the picture brighter but it may also add more noise as it amplifies all aspects of the video signal.

Recommend AGC is decreased below 15 if Sensup is increased over x2.

SENS-UP

OFF – AUTO - x2,x4,x6,x8,x10,x15,x20,x25,x30

The Sens-Up option allows the shutter speed to be reduced allowing additional light to be captured. Increasing brightness helps night time viewing (see BRIGHTNESS setting above). If set too high and Sensup is slowing shutter speed down to a lower speed than any movement speed, ghosting can occur. **Recommend that Sensup is switched on to x8 or above in low light conditions.**

BRIGHTNESS 1 ~ 100 (Default = 54)

Use this setting to increase brightness by opening camera iris. Useful for improving night time viewing by using in conjunction with the Sens-Up option. However be aware to consider possible effects when there is strong sunlight in summer that if setting brightness to high it may cause the picture to white out.

Recommendation is to set brightness to 75.

D-WDR (Digital Wide Dynamic Range) LEVEL 0 ~ 8 (Default = 2)

WDR is used for surveillance applications where there is a large difference in foreground and background light levels. This is typical in homes and office buildings that have large areas of glass with direct sunlight outside. Without the option switched on, views by cameras looking through windows may not give good reproduction outside. Also where there are areas of shadow and bright sunlight, the WDR option helps to balance light levels.

Recommend using WDR where balancing light levels in warehouses or large buildings is difficult.

DEFOG ⏪ OFF – AUTO ⏩

The defog option can be used to improve the captured image in poor weather conditions such as smog, fog or smoke. Three levels of optimisation can be applied using the gradation, 0 = low, 1 = middle or 2 = high. This option is also useful to stabilise rapid fluctuating light levels. You need to set the position and size of the area. By default the whole screen is covered but if just an area is required, use the size option first to create a box and then use the position to position it using the controller arrow keys. Use default to default this option.

Recommend setting this option to On

RETURN

Return to main menu.

<p>BACKLIGHT</p>	<p>OFF</p>	<p>BLC ⏪ LEVEL Middle / High / Low AREA ⏪ POS / SIZE DEFAULT ⏪ RETURN ⏪ HSBLC ⏪ SELECT Area 1 ~ 4 DISPLAY ON ⏪ Pos / Size BLACK MASK ON / OFF LEVEL 0 ~ 100 MODE NIGHT ⏪ AGC LEVEL 0 ~ 255 ALL DAY DEFAULT ⏪ RETURN ⏪</p>
-------------------------	------------	--

Backlight Compensation when set, can balance light levels during day and night so that light hitting objects viewed, is evenly spread across the picture. There are two options BLC and HSBLC that can be selected.

Backlight BLC ↵

(Backlight Compensation)

BLC is the standard setting for adjusting light level differences. The level settings provides an option for selecting low, middle or high. Select an area where BLC is required. Using the Position and Size settings selecting boxes where light balancing is required. Work from top to bottom and from left to right. Clicking on Default will default this menu option only.

HSBLC ↵

(High Sensitivity Backlight Compensation)

HSBLC is high level backlight compensation that will darken a bright area e.g car headlights. This can be set for all day or night only. The lower the level the more compensation is applied. Note that using the night option may be best as daytime pictures generally give a more even spread of light apart from sunlight issues.

Recommend only to use on Night Only if bright lights are causing complete video loss.

Return

Return to main menu

<p>WHITE BAL</p>	<p>ATW AWC → SET ↵ INDOOR OUTDOOR MANUAL ↵</p>	<p>MANUAL WB BLUE 0 ~ 100 Default 50 RED 0 ~ 100 Default 50 RET ↵</p>
-------------------------	--	--

The White Balance feature automatically adjusts the colour settings in the camera to match the type of light available, so that white and other colours appear as natural as possible.

ATW

This option is generally used to set white balance when camera is used externally.

AWC → SET ↵

Press IRIS+ or joystick centre button down

This option allows you to set white balance using current light levels. Settings will only change when you press IRIS+ or joystick centre button down.

INDOOR

This option is generally used to set white balance when camera is used internally.

OUTDOOR

This option is generally used to set white balance when camera is used externally.

MANUAL WB ↵

This option allows you to set white balance using manual settings.

SEE600 Multi-Format HD Camera (TVI/AHD/CVI) & Analogue with IRs

DAY&NIGHT	EXT ↵ AUTO ↵ COLOR B&W ↵	D & N EXT D → N (DELAY) 0 ~ 60 Default 3 N → D (DELAY) 0 ~ 60 Default 3 RETURN ↵ D & N AUTO D → N (AGC) 1 ~ 255 Default 200 D → N (DELAY) 0 ~ 60 Default 1 N → D (AGC) 1 ~ 255 Default 80 N → D (DELAY) 0 ~ 60 Default 1 RET ↵ B / W BURST OFF / ON IR SMART ON ↵ Level 0 ~ 15 Default 3 Area ↵ Pos / Size Ret ↵ RETURN RET ↵
----------------------	---	--

The Day & Night menu, controls light settings, and predominantly provides options for using the cameras’ Infra-Red facilities. There are four sub-options External, Auto, Colour and B/W.

EXTERNAL ↵

This option does not use the internal CDS sensor to measure the available light. With cameras using their own IR light source, this option can give the best results. Note that this option has an adjustment for setting a delay factor from day to night and from night to day to provide more appropriate settings for respective locations.

Recommend to use this option if there is additional lighting available at night

AUTO ↵

The standard Auto function uses the internal CDS to measure available light. This option uses AGC (Automatic Gain Control) and the delay time to adjust picture quality when switching from day to night and from night to day.

Recommend to use this option when the only lighting available is provided by the camera.

COLOUR

This option will remain in colour mode day and night. There are no sub menu settings. This will only be applicable when light levels at night are above 4 lux.

B&W ↵

When this option is selected the camera will remain in black and white mode, day and night. The only sub menus available are Burst and IR Smart. When burst is switched on it adds the colour burst info from the camera. If the IR Smart option is switched on you can select an area size and position so that the intensity of the camera’s infrared LEDs compensate for the distance of an object so that the infrared does not overexpose the object. This is useful to solve the problem of infrared LEDs whitening out images, such as people’s faces, when they are too close to the IR LEDs.

Return

Return to main menu.

<p>DIGITAL NOISE REDUCTION</p>	<p>NR ↵</p>	<p>NR 2 DNR Middle / High / Off / Low 3 DNR Middle / High / Off / Low RET ↵</p>
---------------------------------------	-------------	--

DNR Off / Low / Middle / High

Digital Noise Reduction is generally applied when the Sens-Up feature is used to improve night time views in low light conditions. Using the Sens-Up option slows the shutter speed but this increases noise and causes grainy picture effects. DNR helps to minimise this effect. The options low, middle and high, apply different levels of noise reduction and therefore have to be tested to gain the best result as light levels will be different at every site and location.

2DNR

The 2DNR option which is two dimensional digital noise reduction analyses single frames individually to find pixels that are likely to represent noise and benefits are predominantly obtained on moving objects.

3DNR

The 3DNR option which is three dimensional digital noise reduction analyses previous and current frames to identify pixels that are likely to represent noise and benefits are predominantly obtained on static objects.

Therefore setting both options in this camera should provide the best result.

Recommend to leave these options both set to middle when Sense-Up is on.

<p>SPECIAL</p>	<p>CAM TITLE OFF / ON ↵ D-EFFECT ↵ MOTION OFF / ON ↵</p>	<p>CAM TITLE < > CLR POS END D – EFFECT FREEZE OFF / ON (Mirror option suppressed) MIRROR OFF / MIRROR / V-FLIP / ROTATE NEG. IMAGE OFF / ON RET ↵ MOTION SELECT AREA 1 ~ 4 DISPLAY ON ↵ SENSITIVITY 0 ~100 COLOR GREEN / BLUE / WHITE / RED TRANS 1.00 / 0.75 / 0.25 / 0.00 ALARM VIEW TYPE OFF / BLOCK / OUTLINE / ALL OSD VIEW ON / OFF ALARM OUT ON / OFF TIME 0 ~ 15 RET ↵ DEFAULT ↵ RET ↵</p>
-----------------------	--	--

CAM TITLE **ON ↵ / OFF**

CAM TITLE

0 1 2 3 4 5 6 7 8 9
 A B C D E F G H I J K
 L M N O P Q R S T U V
 W X Y Z > ▶ ◀ ▲ ▼ ()
 — — □ / = & : ~ , .

⇐ ⇒ **CLR POS END**

Use the camera joystick or coaxitron PTZ control option in DVR to enter up to a 15 character camera name. Use the arrow keys on the joystick/PTZ control to move to character required and press the joystick button in or the IRIS+ button using the PTZ control, to select the character required. To move to the correct character position, use the arrow keys to move to the left or right arrow on the line above the camera title and press joystick button in or IRIS+ button using the PTZ control. The same procedure can be used to clear (CLR) the title, position (POS) the title on the camera display screen and set the option using the (END) option.

D-EFFECT **OFF / ON ↵**

The digital Effect menu provides an option to freeze the picture but does not allow the Mirror option to be selected once picture is frozen.

FREEZE **OFF / ON** (Mirror option suppressed)

Freezes camera picture.

MIRROR **OFF / MIRROR / V-FLIP / ROTATE**

Change picture for mirror effect, vertical flip or rotate.

NEG. IMAGE **OFF / ON**

Changes to negative picture.

MOTION **OFF / ON ↵**

This camera has a motion detection option that will display MOTION DETECTED whenever the camera detects movement within a specified area. Up to four separate areas can be created using the position and size parameters in four coloured boxes. These boxes can be individually set to display smaller coloured squares that will track movement. This does not replace the motion detection option in the DVR.

SELECT **AREA1 / AREA2 / AREA3 / AREA4**

Select an area.

SEE600 Multi-Format HD Camera (TVI/AHD/CVI) & Analogue with IRs**DISPLAY ON ↵ / OFF**

Select ON to set position and size of Area selected. Recommend setting size first then position. You use the arrow keys on controller and press enter to accept, or IRIS+ button if using DVR PTZ control. Press RET to return to menu or AGAIN to re-enter the position and size settings.

SENSITIVITY 0 ~ 100 (Default = 64)

This sets the sensitivity of the motion detection. The higher the value the more sensitive it is.

COLOUR GREEN / BLUE / WHITE / RED

Use this option to select the colour of the box.

TRANS 1.00 / 0.75 / 0.25 / 0.00

This option sets transparency level of coloured box.

ALARM ↵

This option applies the view parameters when motion is triggered applying all, blocking or outline facility.

VIEW TYPE	ALL / OFF / BLOCK / OUTLINE
OSD VIEW	ON / OFF (switches off on screen display)
ALARM OUT	ON / OFF (switches off alarm)
TIME	0 ~ 15 (Default = 3) (Alarm display time in seconds)
RET ↵	

PRIVACY OFF / ON ↵

The privacy option allows you to overlay up to four areas of the picture to mask video that may be classified as intrusive or obtrusive. Up to four different coloured boxes can be created and used to mask the picture.

SELECT	AREA1 / AREA2 / AREA3 / AREA4
DISPLAY	COLOR ↵
	Set position and size of Area selected. Recommend setting size first then position. You use the arrow keys on controller and press enter to accept, or IRIS+ button if using DVR PTZ control. Press RET to return to menu or AGAIN to re-enter the position and size settings.

COLOR	WHITE / BLACK / RED / BLUE / YELLOW
Set area colour	GREEN / CYAN / USER

TRANS	1.00 / 0.25 / 0.50 / 0.75
	Sets transparency level of coloured box.

DEFAULT ↵	
	Defaults this menu

RETURN	RET ↵
	Return to previous menu

SEE600 Multi-Format HD Camera (TVI/AHD/CVI) & Analogue with IRs

LANGUAGE **ENG** ↵ **CHN1** ↵ **CHN2** ↵ **GER** ↵ **FRA** ↵ **ITA** ↵ **SPA** ↵ **POL** ↵
RUS ↵ **POR** ↵ **NED** ↵ **TUR** ↵

Select the language and press enter on controller to accept, or the IRIS+ button if using DVR PTZ control, to change the menu into the correct language.

Languages are: English, Chinese 1, Chinese 2, German, French, Italian, Spanish, Polish, Russian, Portuguese, Dutch and Turkish.

DEFECT ↵

DPC is Dead Pixel Count. Lenses can use millions of pixels. A 2 MPX lens has 2,000,000 pixels. Often some of these pixels can fail and can display either white or black spots on the video display. This option suppresses dead pixels.

LIVE DPC ON ↵ / OFF
 AGC LEVEL 0 ~ 255 Default = 64
 LEVEL 0 ~ 100
 RETURN RET ↵

WHITE DPC ON ↵ / OFF
 POS / SIZE ↵
 START ↵
 DPC VIEW OFF / ON
 LEVEL 0 ~ 100 (Default = 15)
 AGC 0 ~ 14 (Default = 14)
 SENS-UP x2 / x4 / x6 / x8 / x10 / x15 / x20 / x25
 x30 (Default = x8)
 RETURN RET ↵

BLACK DPC OFF / ON ↵
 POS / SIZE ↵
 START ↵
 DPC VIEW OFF / ON
 LEVEL 0 ~ 100
 RETURN RET ↵

RS485 ↵

There is no RS485 cable connection on this camera. Menu access is via TVI coaxitron only that does not need RS485.

RETURN **RET** ↵

SEE600 Multi-Format HD Camera (TVI/AHD/CVI) & Analogue with IRs

LSC (Lens Shading Compensation) ON / OFF

Lens shading compensation describes the light fall-off observed, towards the edges of an image. Lens vignetting can be prevalent when light hits irregular angles such as railings.

VIDEO . OUT PAL / NTSC

PAL is the standard used in the UK.

RETURN RET

<p>EXIT</p> <p>Use right arrow to select "Save & End", "Reset" or "Not Save"</p>	<p>SAVE & END ↵</p> <p>RESET ↵</p> <p>NOT SAVE ↵</p>	<p>Exit saving menu changes</p> <p>Reset camera menu default settings</p> <p>Exit menu without saving changes</p>
---	--	---

- EXIT** **SAVE & END ↵** Exit saving menu changes
- RESET ↵** Reset camera menu default settings
- NOT SAVE ↵** Exit menu without saving changes

SEE600 Camera Specifications

CCD	1.27" 3 MP	Video Outputs	TVI / AHD / CVI / CVBS
Resolution	1080p	Analogue TVL	700 TVL
Day/Night	True Day/Night mechanical filter	IR Power	2 x High Power LEDs 20m range
Min.Illumination	0 Lux IRs on	Power/Current	12v DC 425mA IRs on /110mA IRs off
Power Connector	2.1mm DC Jack	Lens	3.6mm board lens
Menu	Full OSD Menu via coaxitron	Viewing Angle	Viewing angle 72°
WDR	Wide Dynamic Range included	Backlight	BLC and HSBLC included
Dead Pixel Count	DPC black & white	Dimensions	98mm x 116mm x 75mm
Colour	White	Build	Plastic Outer, Inner Metal
NiteDevil	Sens-Up option	IP Rating	IP66 rated
Privacy Masking	Privacy Masking 4 areas	Mirror Option	Mirror / Flip / Rotate options
Motion Display	Motion display option included	Defog Option	Defog option included
Freeze option	Freeze option included	Uses	Internal or External use



WEE/CG0783SS

This symbol on the products and/or accompanying documents means that used electronic equipment must not be mixed with general household waste. For treatment, recovery and recycling please return this unit to your trade supplier or local designated collection point as defined by your local council.

All specifications are approximate. Kovert.com reserves the right to change any product specification or features without notice. Whilst every effort is made to ensure that these instructions are complete and accurate, kovert.com cannot be held responsible in any way for any losses, no matter how they arise, from errors or omissions in these instructions, or the performance or non-performance of the camera or other equipment that these instructions refer to.