

## Instruction Manual

RoboPlate FTP Server

SOFT1044

1.1.3.0

© 2022 System Q Ltd

RoboPlate.com



# Table of Contents

<b>Part 1 Introduction</b>	<b>1</b>
1 PC Requirements .....	1
2 Software Licensing .....	2
3 Limitations & Software Protection .....	2
<b>Part 2 Installation</b>	<b>3</b>
<b>Part 3 Getting Started</b>	<b>3</b>
<b>Part 4 Configuration</b>	<b>3</b>
1 Firewall .....	4
2 Add New User .....	6
3 Camera FTP Setup .....	6
In Software .....	7
In Camera .....	9
4 Enable the Server .....	11
5 Browser and File Navigation .....	12
6 Activity .....	15
7 CSV Results .....	16
CSV File Contents .....	18
<b>Index</b>	<b>19</b>



## Introduction

This program is written specifically for the RoboPlate range of ANPR Cameras, it can receive images (jpgs) and activity logs from these cameras and file them on the local PC for easy viewing.

An embedded Microsoft Windows® file browser allows viewing in either thumbnail or list mode.

Images are conveniently named indicating B/W/G list then date and time:- this makes searching and sorting easy.

Activity logs are received as a .csv file intended for viewing in a spreadsheet program such as Microsoft Excel or similar.

Key features include...

- Works with RoboPlate ANPR cameras
- Stores plate captures
- Saves plate data to your PC
- Thumbnail results
- Easy to browse image files
- Files as white, grey or black list
- Plate data stored in the file name
- Windows PC compatible

### 1.1 PC Requirements

The recommended minimum system specification is:

- Windows 7 SP1 or above
- Intel I5 3.0GHz Processor
- 4Gb RAM (32bit OS) or 8Gb RAM (64bit OS)

Disc space requirements:

- Approx 75Mb for roboPlate bundles

Note that Windows 7, 8, 8.1, 10 and 11 (32/64bit) are supported.



## 1.2 Software Licensing

Each PC installing the RoboPlate FTP Server requires a licence.

The software is a standalone product, for use on additional PCs, these require a licence in their own right.

The licence specifies that only a single instance of the software is allowed to run at any moment in time on a physical PC and that no modification or virtualisation is allowed.

This software requires an Internet connection for registration, activation and support purposes only. Registration and activation is a single one-time task, once activated an Internet connection is not required for day-to-day use.

Likewise, to relinquish the licence, deactivation requires an Internet connection. Licence removal is possible during the un-installation process, you may then reinstall onto a new PC.

## 1.3 Limitations & Software Protection

The following limitations apply and are not supported, not allowed or have not been tested, nor will be tested :

- Windows Vista, XP or earlier
- Windows Server editions (2008, 2012 etc)
- Virtual environments such as VMWare,
- Virtual PC, Virtual Box and others
- Multiple instances of any individual executable
- Execution in the presence of a debugger/disassembler
- Changing the executable file name

The RoboPlate FTP Server software is Enigma protected.

Enigma is a commercial product providing copy protection, registration and activation features, for more information, see [enigmaprotector.com](http://enigmaprotector.com).

Some antivirus packages generate warnings because of Enigma's presence so customers are advised to satisfy themselves that our code-signed modules are intact and have not been modified, then exclude them from further antivirus analysis.

To check the validity of a code-signed executable via Windows File Explorer, locate, then right click on the file, select : Properties > Digital Signatures > Details.



## Installation

Please ensure you have an Internet connection because the final step requires online activation before the program can be used.

Download the installer from [softcctv.com](http://softcctv.com) using the instructions provided on the software certificate card.

Register the software using the software key provided on the certificate used to download the software, then run it.

## Getting Started

Image processing and analysis is all done in the camera, ANPR data is then sent via FTP to this software for storage. For this to happen, the camera must be configured correctly.

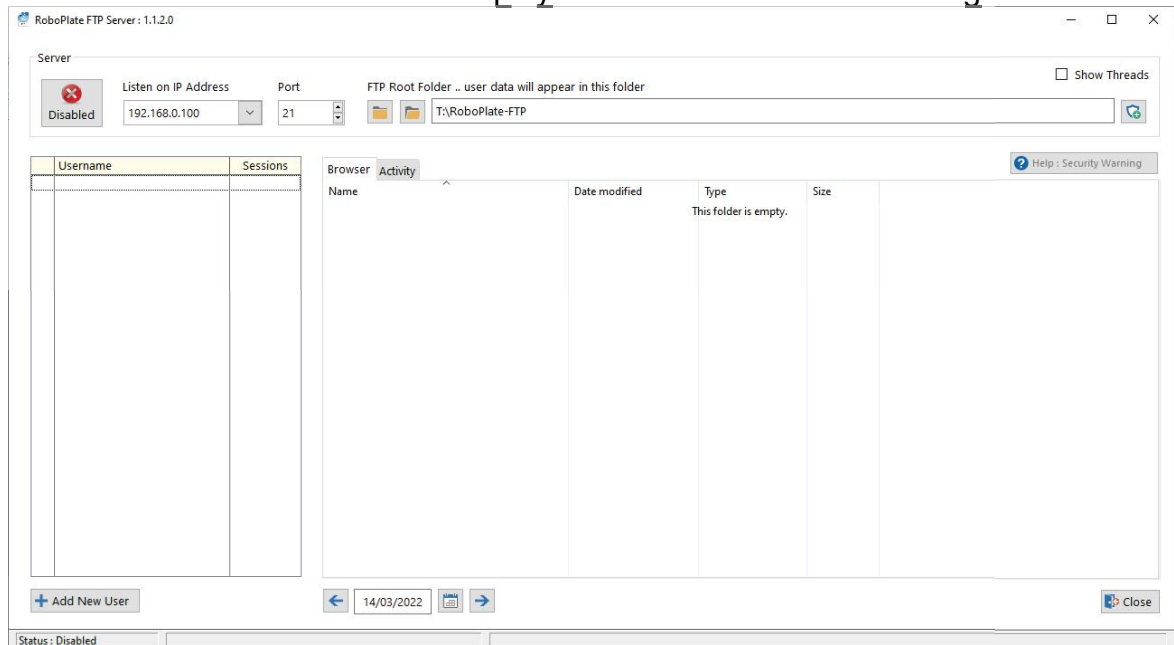
These links provide document how to setup a camera ..

<https://systemq.com/PDF/manual/xROBOPCZ22.pdf>  
<https://systemq.com/PDF/manual/xROBOPMZ50.pdf>

See FTP section - [FTP Setup](#)

## Configuration

This is the main screen which is displayed when the software is running.





## 4.1 Firewall

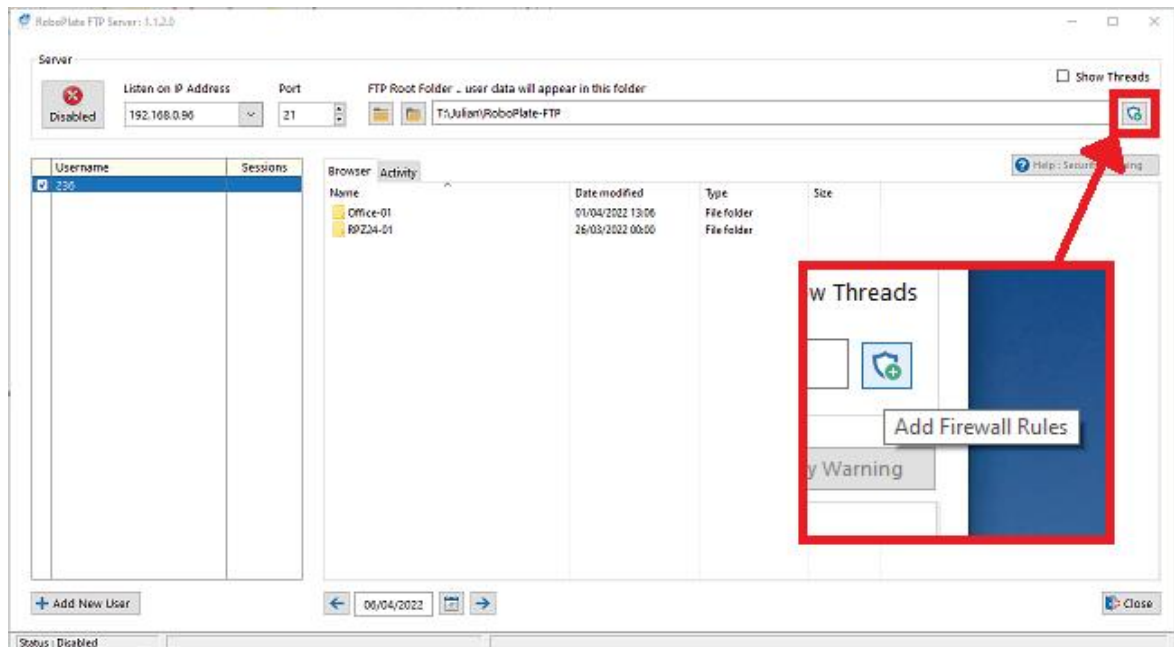
In order for the software to receive FTP data being sent from the camera, the Firewall needs to be opened (an exception added).

As of v1.1.2.0, the installer offers the opportunity to create Firewall rules, prior to this release, rules should be created manually as described below. The manual method may be used at any time, any existing rule is simply deleted and then re-created.

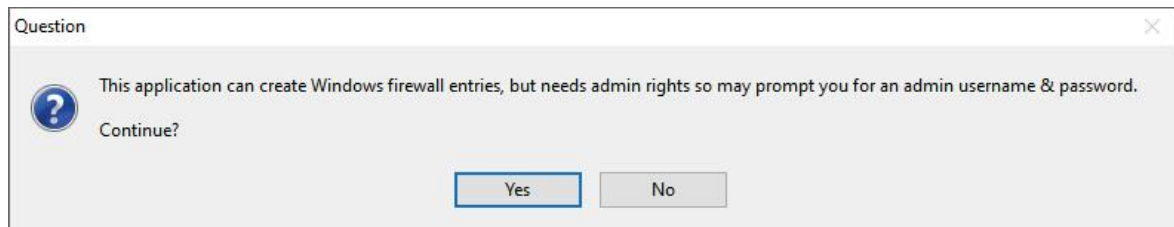
Note:

This program can only create rules in the built-in Windows Firewall, it cannot create rules in third party products, if you use one of these, please refer to the manufacturer's instructions for guidance.

1. Select the Firewall "**Shield**" button on the software.

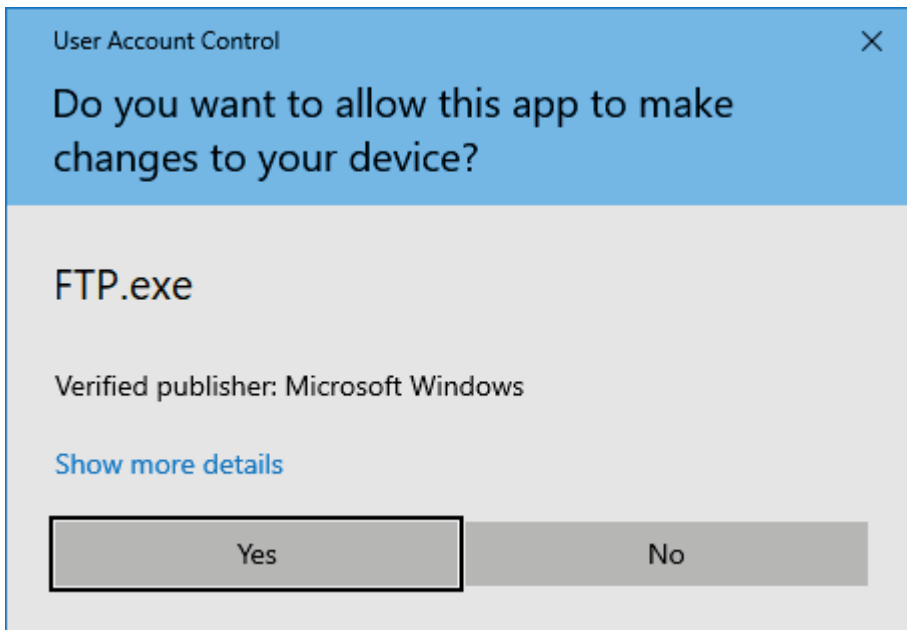


2. Select "**Yes**" to the prompt advising the software requiring admin rights.





3. Select "Yes" and/or enter admin credentials for the admin user Windows prompt.



4. Select "Yes" for the RoboPlate FTP Server application to apply an inbound firewall exception, and wait for the dialogue box to disappear.



**Note:**

*This is not a general purpose FTP server only accepting inbound connections, provision is being made whereby this program can connect to a RoboPlate camera, hence, an outbound connection will be required as well. This functionality will be present in a later release but outbound rule creation has been implemented in the v1.1.2.0 release.*





## 4.2 Add New User

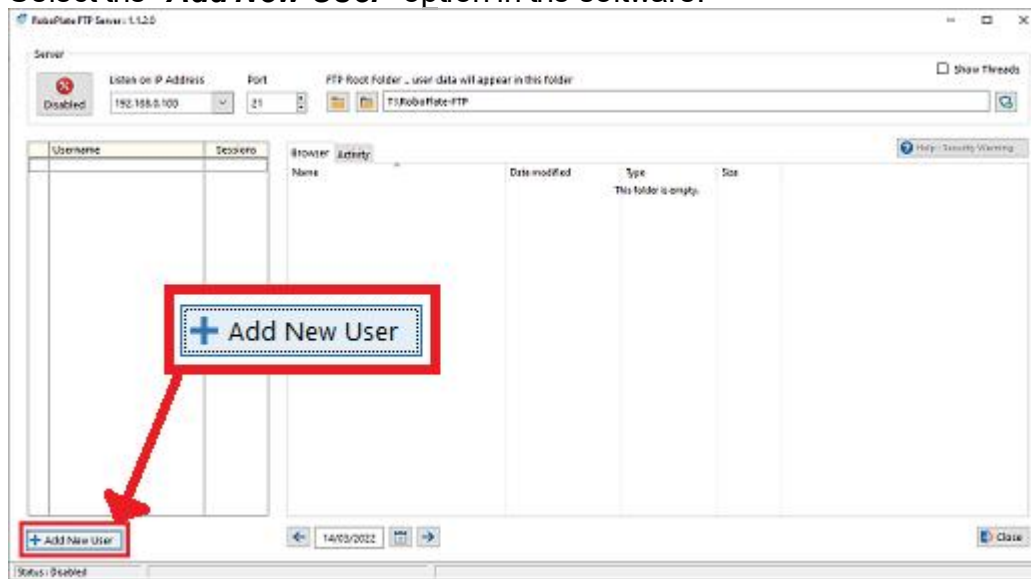
For the camera to send the data to the software a "User" needs to be added to the software.

This allows for added security, management and logging of connections received by the program.

It also allows for control of where the files are to be stored on the PC, as different users can have different file locations set in the FTP Server

To add a user...

Select the **"Add New User"** option in the software.



Enter in credentials which the camera will use to login to the FTP Server, and a folder name.

Click **Save** after making any changes

User: Add New Record

Enabled

Username:

Password:

User Folder:

The user folder will be created in the application's FTP Root folder location.

## 4.3 Camera FTP Setup

The FTP server login information needs to be entered in the camera in order for the camera to send data to the server.





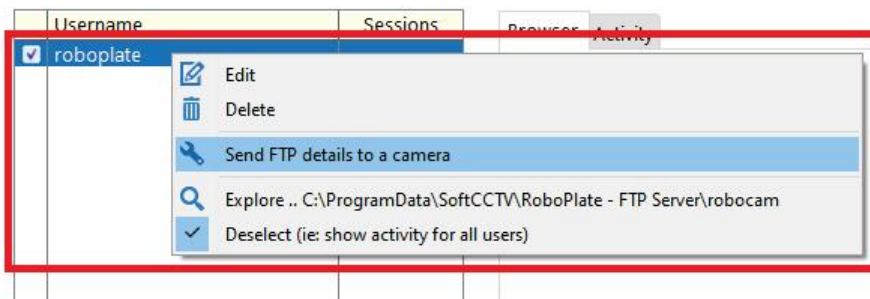
This information can be sent to the camera using the FTP Server "**In Software**" option, or it can be manually entered direct "**In Camera**".

### 4.3.1 In Software

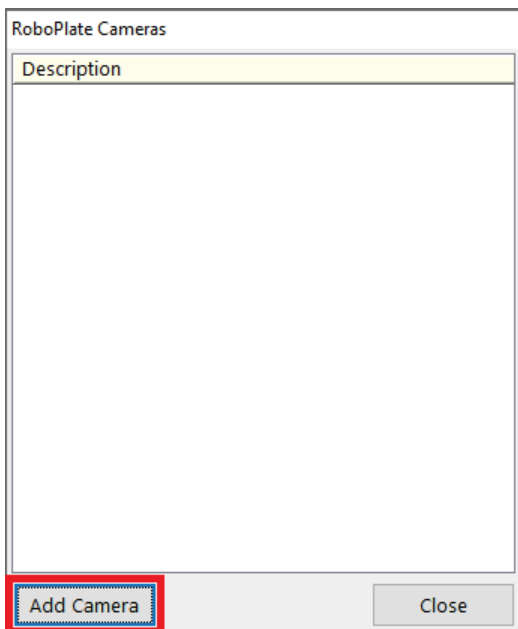
This section describes how use the "**In Software**" Option to send the FTP server login information to the camera, rather than having to set it up in the cameras web interface.

*Note: This setup is only designed for LAN cameras, if the camera being setup is remote then see [In Camera Setup](#).*

1. Right-click the user, then select the "**Send FTP details to a camera**".



2. Select "**Add Camera**"



3. Enter the login details for the RoboPlate camera. Select "**Save**" after making any changes.




## RoboPlate FTP Server

RoboPlate Camera

Description

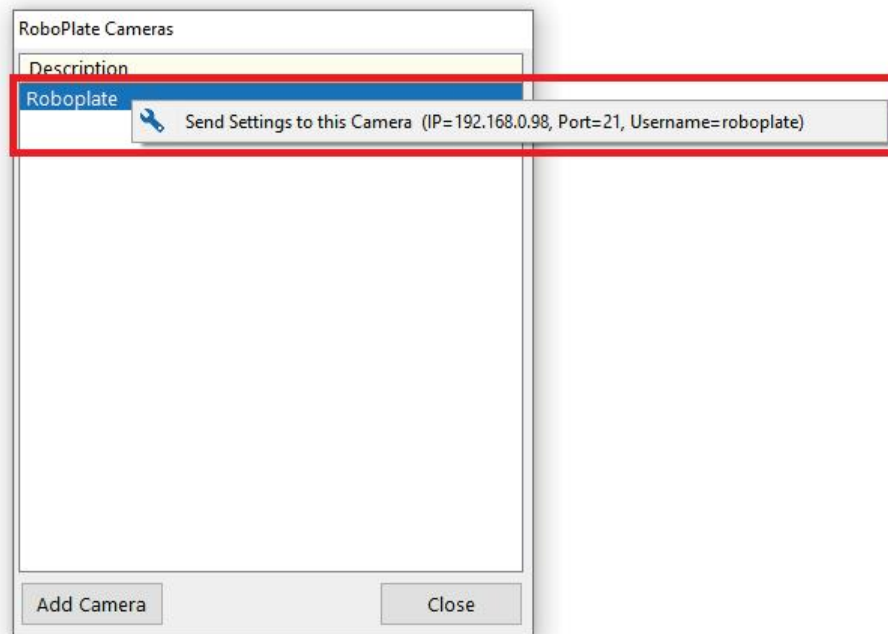
IP Address

Username

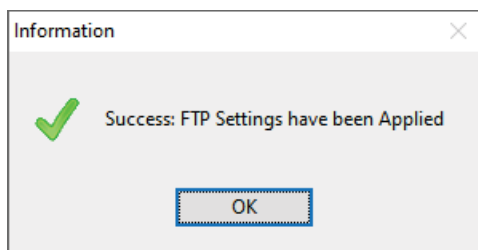
Password  

Web Port

4. Right-click the camera, then select "**Send Settings to this Camera...**"



5. The information dialogue box will display once the settings have been applied.

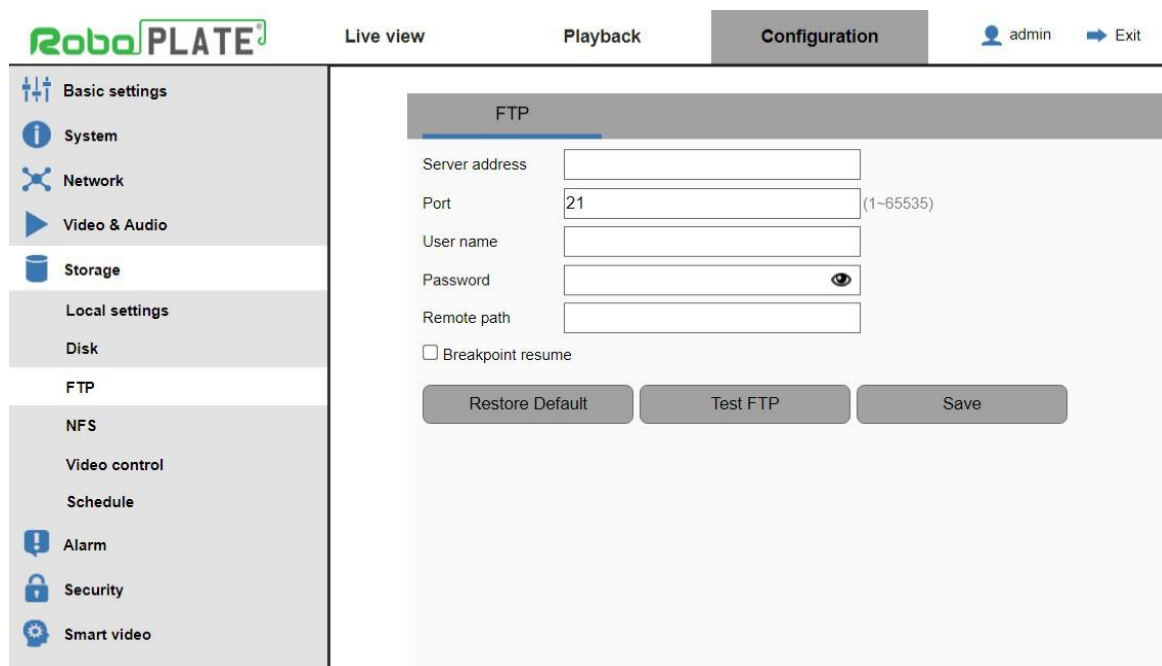




### 4.3.2 In Camera

This section describes where to enter the login details in the camera for the FTP server login information.

In the camera browser interface navigate to: **Configuration > Storage > FTP**



Field Name	Description
Server Address	<p>Enter the IP address of the PC running the FTP Server. This can be obtained from the FTP Server software. See image to the right.</p> <p>Notes:</p> <ol style="list-style-type: none"> <li>1. Populating this field enables FTP</li> <li>2. Clear this field to disable FTP</li> </ol>
Port	<p>The standard port = 21</p> <p>Use the port as specified by the FTP server.</p>
Username	Enter a username as specified in the FTP server.
Password	Enter the password for the username as specified in the FTP server.
Remote Path	Leave this field blank.



RoboPlate FTP Server

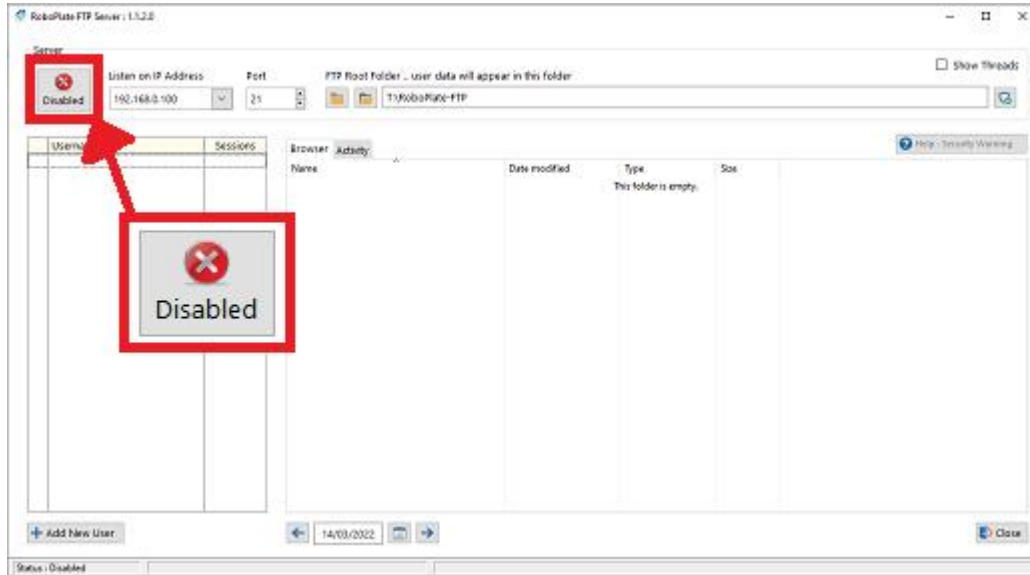
	Management of the folder structure on the FTP server should be handled by the server and not specified here.
Click <b>Save</b> after making any changes	



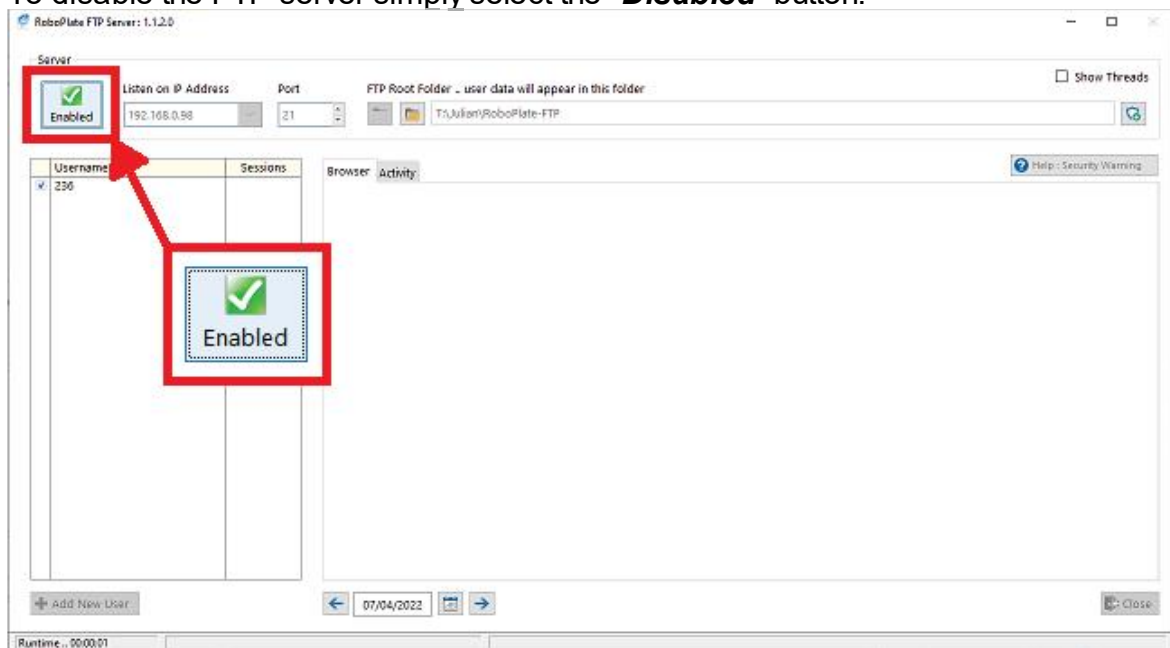
### 4.4 Enable the Server

For the Server to start receiving data from the camera, it will need to be enabled.

As default the software will load up disabled. To Enable simply select the "Disabled" button.



To disable the FTP server simply select the "Disabled" button.



*Note: once enabled the software cannot be closed. If the software needs be to closed then disable the Server first.*



## 4.5 Browser and File Navigation


Once the FTP Server is receiving data, the built-in browser can be used to navigate to the captured number plate images.

FTP Server : Help

This program uses an embedded browser to display files from your hard drive, the browser is located in an IFrame.

Windows security settings determine whether this browser is allowed to launch the application associated with the file that you select.

if disabled .. nothing will happen  
 if enabled .. the application associated with the file selected should launch and open it  
 if set to "Prompt" .. you will be presented with the following warning :

 Do you want to allow files from this website to run on your computer?

To allow the browser to open files without this prompt :

Control Panel > Network and Internet > Internet Options > Security tab > Local Intranet > Custom Level  
 scroll down to and select Miscellaneous > Launching programs and files in an IFRAME = Enable



[Close](#)

To use the browser follow the steps below on searching for files.

1. Select the **user** on the left of the software.



	Username	Sessions
<input checked="" type="checkbox"/>	236	

2. Double click to enter the **camera** folder in the navigation viewer.





Browser		Activity		
Name	Date modified	Type	Size	
 Office-01	01/04/2022 13:06	File folder		
 RPZ24-01	26/03/2022 00:00	File folder		



3. Double click to enter "**ANPR**" folder.

Browser		Activity	
Name	Date modified	Type	Size
 ANPR	04/04/2022 00:00	File folder	
 snap	04/04/2022 08:01	File folder	

4. Double click to enter the **date** folder.

Browser		Activity	
Name	Date modified	Type	Size
 2022-04-01	02/04/2022 00:00	File folder	
 2022-04-02	03/04/2022 00:00	File folder	
 2022-04-03	04/04/2022 00:00	File folder	
 2022-04-04	04/04/2022 08:38	File folder	

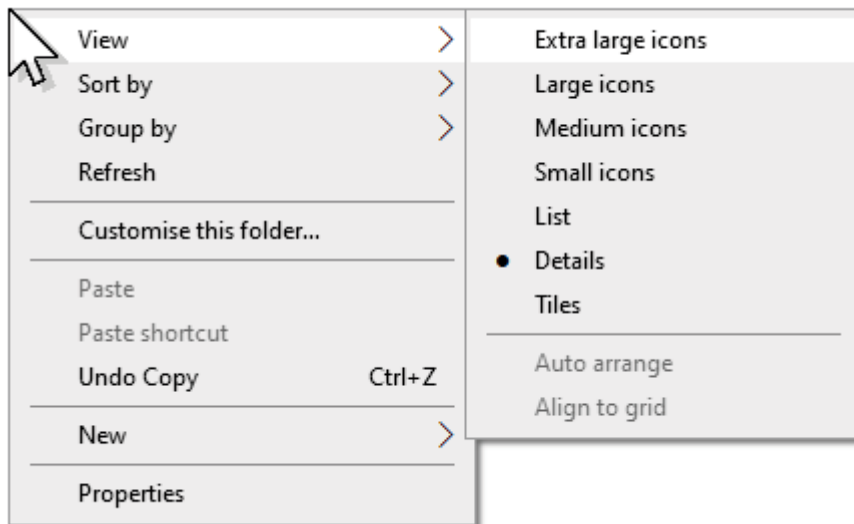




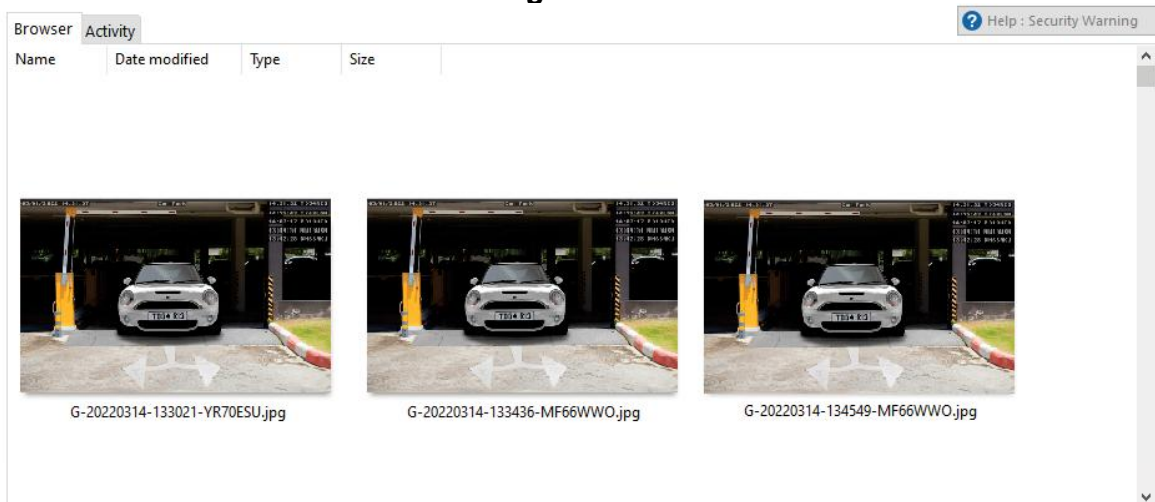
5. Double click to view the captured picture.

Name	Date modified	Type	Size
G-20220401-125142-WL59KLU.jpg	01/04/2022 12:51	JPG File	58 KB
G-20220401-125143-WL59KLU.jpg	01/04/2022 12:51	JPG File	58 KB
G-20220401-125144-WL59KLU.jpg	01/04/2022 12:51	JPG File	58 KB
G-20220401-125159-WL59KLU.jpg	01/04/2022 12:52	JPG File	58 KB
G-20220401-125204-WL59KLU.jpg	01/04/2022 12:52	JPG File	58 KB
G-20220401-125208-WL59KLU.jpg	01/04/2022 12:52	JPG File	58 KB
G-20220401-125212-WL59KLU.jpg	01/04/2022 12:52	JPG File	58 KB

6. The view mode of the folder can be changed, **right-click** in a blank space in the viewer, then go to **View**, then select from the options. i.e. The view mode above is **Details** mode



i.e the viewer mode below is **Extra large icons** mode



7. To return select the **user** on the left.



## 4.6 Activity

The server will log activity and connections, this can be viewed in the software itself.

Note: The activity tab is for advanced users only. This feature is for maintenance and fault finding, and provides in depth technical information on connections to the FTP server.

Browser Activity
Help : Security Warning

Session Number		Session Detail		
ID	Time	Time	D	Description
14859	11:11:37	11:11:43		End of Session
14858	11:09:29	11:11:43	TX	221 BYE / Closing connection
14857	11:06:17	11:11:43	RX	QUIT
14856	10:59:53	11:11:43	TX	226 File transfer successful
14855	10:56:03	11:11:43		PASV Receiver Thread Ended = 3
14854	10:55:03	11:11:42	TX	150 Ready for data connection
14853	10:54:32	11:11:42		File = T:\Julian\RoboPlate-FTP\236\Office-01\snap\2022-04-04\SNAP00A-20220404-111136.jpg
14852	10:53:56	11:11:42	RX	STOR //Office-01\snap\2022-04-04\SNAP00A-20220404-111136.jpg
14851	10:44:15	11:11:37	TX	227 Entering Passive Mode (192,168,0,96,101,58)
14850	10:43:34	11:11:37		PASV Receiver Thread Started = 3
14849	10:42:22	11:11:37		PASV Port = 25914
14848	10:40:26	11:11:37	RX	PASV
14847	10:33:10	11:11:37	TX	200 Ok
14846	10:31:09	11:11:37	RX	TYPE I
14845	10:30:10	11:11:37	TX	257 Directory created
14844	10:28:12	11:11:37	RX	MKD //Office-01\snap\2022-04-04
14843	10:22:01	11:11:37	TX	257 Directory created
14842	10:17:54	11:11:37	RX	MKD //Office-01\snap
14841	10:17:40	11:11:37	TX	257 Directory created
14840	10:16:00	11:11:37	RX	MKD //Office-01
14839	10:13:45	11:11:37	TX	230 Login successful
14838	10:12:20	11:11:37		Password accepted
14837	10:08:47	11:11:37	RX	PASS 236

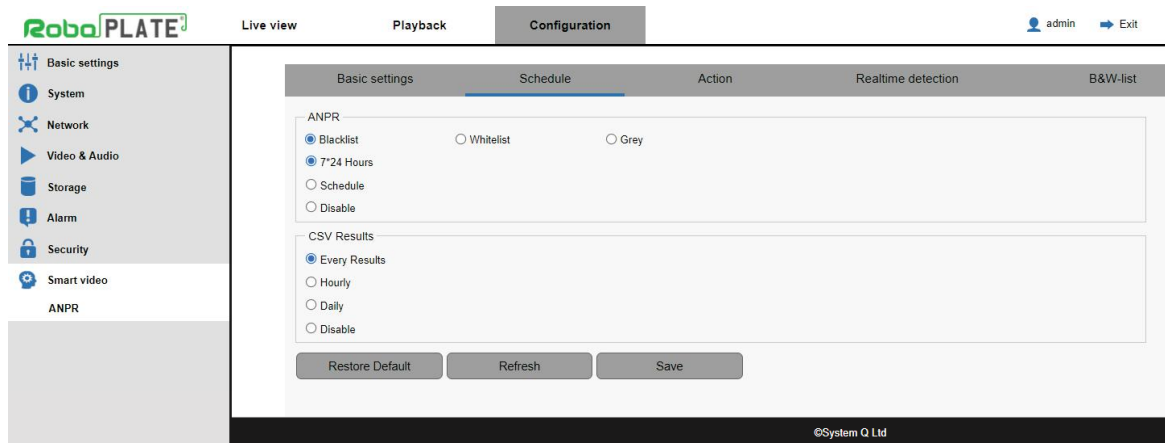
← 04/04/2022 📅 →
Close

To select different dates select the left or right arrows, select the calendar icon or enter the date manually.

## 4.7 CSV Results

The RoboPlate camera can be setup to send CSV results to the FTP server.

To configure this login to the camera browser interface, then navigate to:  
**Configuration > Smart Video > ANPR > Schedule**



CSV Results*	
Every Results	Exports to the CSV file after every result.
Hourly	Exports to the CSV the file each hour.
Daily	Exports the CSV file just after midnight.
Disable	Turn off the CSV export.
Click <b>Save</b> after making any changes	

*Note: A new file will be created every day (without previous days results).*

The CSV File is for use with other software or an external program like Excel or Notepad.

The file can be navigated to using the FTP server browser and file navigation.

1. Select the **user** on the left of the software.

	Username	Sessions
<input checked="" type="checkbox"/>	236	
<input type="checkbox"/>		



2. Double click to enter the **camera** folder in the navigation viewer.

Browser		Activity	
Name	Date modified	Type	Size
Office-01	01/04/2022 13:06	File folder	
RPZ24-01	26/03/2022 00:00	File folder	

3. Double click to enter "**ANPR**" folder.

Browser		Activity	
Name	Date modified	Type	Size
ANPR	04/04/2022 00:00	File folder	
snap	04/04/2022 08:01	File folder	

4. Double click to view the file. Or right-click for Windows context menu, to copy, open with etc...

Browser		Activity	
Name	Date modified	Type	Size
2022-06-14	14/06/2022 09:11	File folder	
2022-06-14.csv	14/06/2022 09:10	OpenOffice.org 1....	18 KB



### 4.7.1 CSV File Contents

The file contents can be opened using other software or an external program like Notepad or Excel.

Here's an example of the file contents:

```
2022-06-14.csv - Notepad
File Edit Format View Help
no,time,plate_no,car_color,speed,direction
0,2022-06-14 08:05:05,NO64 HST,no_color,0,no_direction
1,2022-06-14 08:05:18,NO64 HST,no_color,0,no_direction
2,2022-06-14 08:05:24,NO64 HST,no_color,0,no_direction
3,2022-06-14 08:05:25,NO64 HST,no_color,0,no_direction
4,2022-06-14 08:05:35,NO64 HST,no_color,0,no_direction
5,2022-06-14 08:05:38,NO64 HST,no_color,0,no_direction
6,2022-06-14 08:05:39,NO64 HST,no_color,0,no_direction
7,2022-06-14 08:05:55,NO64 HST,no_color,0,no_direction
8,2022-06-14 08:05:57,NO64 HST,no_color,0,no_direction
9,2022-06-14 08:06:00,NO64 HST,no_color,0,no_direction
```

no = Result Number - Starting from 0 from the first result.

time = Time & Date - The exact time the number plate result was captured.

plate\_no = Plate Number - This is the number plate data which the camera captured.

car\_color = Feature not implemented.

speed = Feature not implemented.

direction = Feature not implemented.



# Index

## - A -

Adding a user for the FTP Server 6

## - B -

Browsing for captured images 12

## - C -

Camera FTP setup 6

## - E -

Enabling the FTP Server 11

Enigma protection 2

## - F -

Firewall configuration 4

FTP Server activity 15

## - K -

Key features 1

## - P -

PC Requirements and minimum specification 1

## - R -

Required camera setup 3

## - S -

Software Installation 3

Software Licensing 2

Software limitations and protection 2