

Instruction Manual

RoboPlate REGWatch Widget

SOFT1046

v1.1.3.0

© 2022 Enter your company name



Table of Contents

Part 1 Introduction	1
1 PC Requirements	1
2 Software Licensing	2
3 Limitations & Software Protection	2
Part 2 Installation	3
Part 3 Configuration	3
1 Getting Started	4
2 Firewall Exception	5
3 Required Settings	7
Network - PC Settings	8
Action - LAN Relay	9
4 Notifications - Window Settings	10
Notifications - Audio Settings	10
Part 4 Information	11
Part 5 Conditions	12
Index	0



Introduction

This program is written specifically for the RoboPlate range of ANPR Cameras, it can be configured so that when the camera detects a number plate the window will pop up on the screen showing the live video stream on the PC.

It can also be set to play an audio file or have a Microsoft Windows® notification with a simple text message.

Key features include...

- Works with RoboPlate ANPR cameras
- Microsoft Windows® toolbar notification
- Instant pop up notification
- PC compatible
- View live video
- Audio notification

1.1 PC Requirements

The recommended minimum system specification is:

- Windows 7 SP1 or above
- Intel I5 3.0GHz Processor
- 4Gb RAM (32bit OS) or 8Gb RAM (64bit OS)

Disc space requirements:

- Approx 75Mb

Note that Windows 7, 8, 8.1, 10 and 11 (32/64bit) are supported.



1.2 Software Licensing

Each PC installing the RoboPlate RegWatch Widget requires a licence.

The software is a standalone product, for use on additional PCs, these require a licence in their own right.

The licence specifies that only a single instance of the software is allowed to run at any moment in time on a physical PC and that no modification or virtualisation is allowed.

This software requires an Internet connection for registration, activation and support purposes only. Registration and activation is a single one-time task, once activated an Internet connection is not required for day-to-day use.

Likewise, to relinquish the licence, deactivation requires an Internet connection. Licence removal is possible during the un-installation process, you may then reinstall onto a new PC.

1.3 Limitations & Software Protection

The following limitations apply and are not supported, not allowed or have not been tested, nor will be tested :

- Windows Vista, XP or earlier
- Windows Server editions (2008, 2012 etc)
- Virtual environments such as VMWare, Virtual PC, Virtual Box and others
- Multiple instances of any individual executable
- Execution in the presence of a debugger/disassembler
- Changing the executable file name

The RoboPlate RegWatch Widget software is Enigma protected.

Enigma is a commercial product providing copy protection, registration and activation features, for more information, see enigmaprotector.com.

Some antivirus packages generate warnings because of Enigma's presence so customers are advised to satisfy themselves that our code-signed modules are intact and have not been modified, then exclude them from further antivirus analysis.

To check the validity of a code-signed executable via Windows File Explorer, locate, then right click on the file, select : Properties > Digital Signatures > Details.

Installation

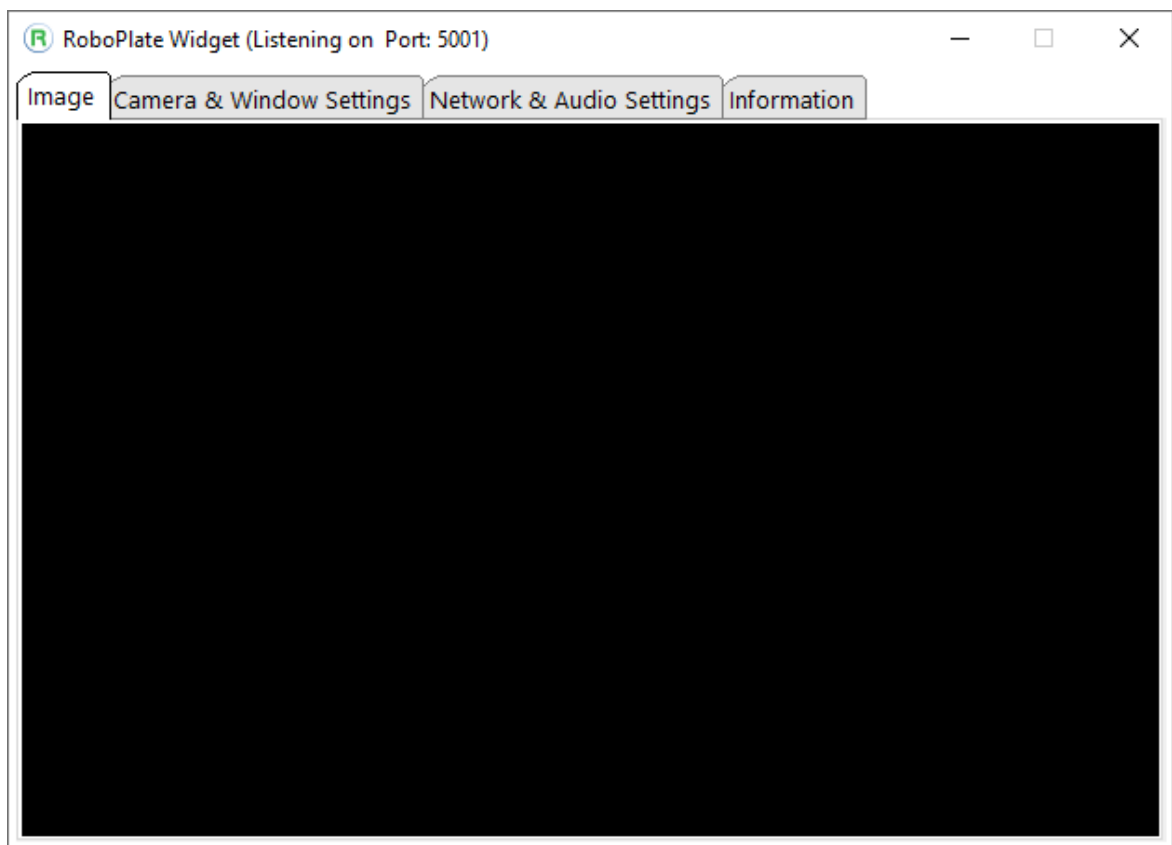
Please ensure you have an Internet connection because the final step requires online activation before the program can be used.

Download the installer from softcctv.com using the instructions provided in the confirmation email

Register the software using the software key provided, then run it.

Configuration

This is the main screen which is displayed as default.





3.1 Getting Started

Image processing and analysis is all done in the camera, this software behaves as though it was a 'LAN relay' hence receives via TCP/IP the user definable text that would otherwise be sent to the relay.

The action relay can be triggered subject to vehicles detected in the black/ white list or grey (unknown) vehicles.

For this to happen, the camera must be configured correctly.

These links provide document how to setup a camera ...

<https://systemq.com/PDF/manual/xROBOPCZ22.pdf>

<https://systemq.com/PDF/manual/xROBOPMZ50.pdf>

Crucially, these minimum steps must be performed in the camera ...

Device Activation - See the camera manual

NTP - See the camera manual

Network - See the camera manual

ANPR - Basic Settings - See the camera manual

ANPR - Schedule (not required if using 7x24hr) - See the camera manual

ANPR - B&W List (not required if solely using grey number plates) - See the camera manual

ANPR - Action - See [Action - LAN Relay](#)

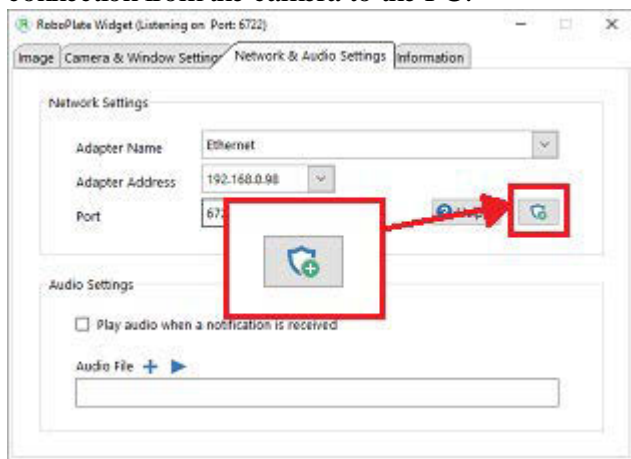


3.2 Firewall Exception

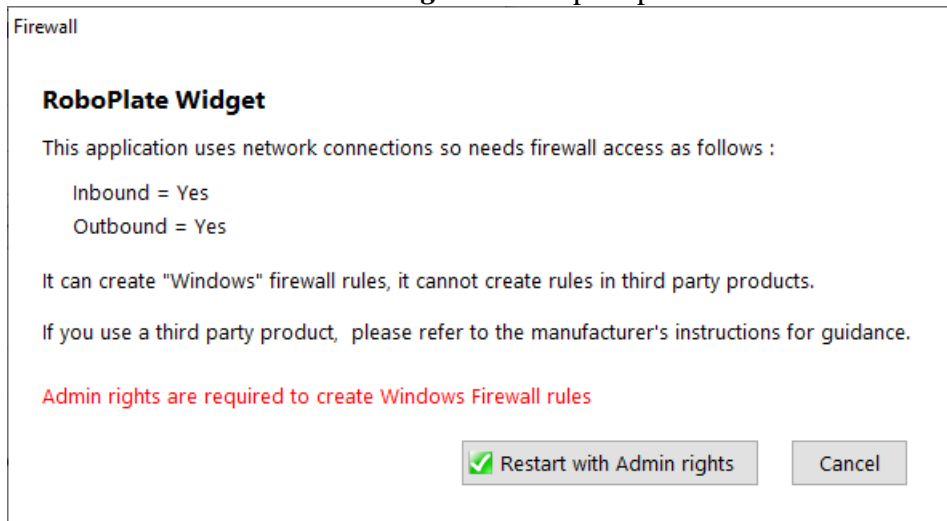
Before configuring the camera settings in the software a firewall exception needs to be added to the firewall on the PC.

The following section describes the adding of an exception in the Windows[®] Firewall with the software's built-in configuration.

1. Go to **Network & Audio Settings** then select the "**Firewall**" button to add and allow the connection from the camera to the PC.



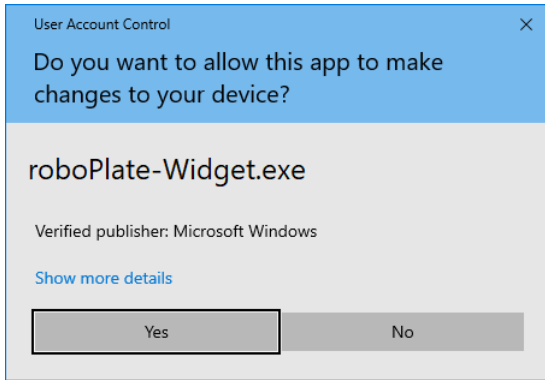
2. Select "**Restart with Admin rights**" to the prompt.



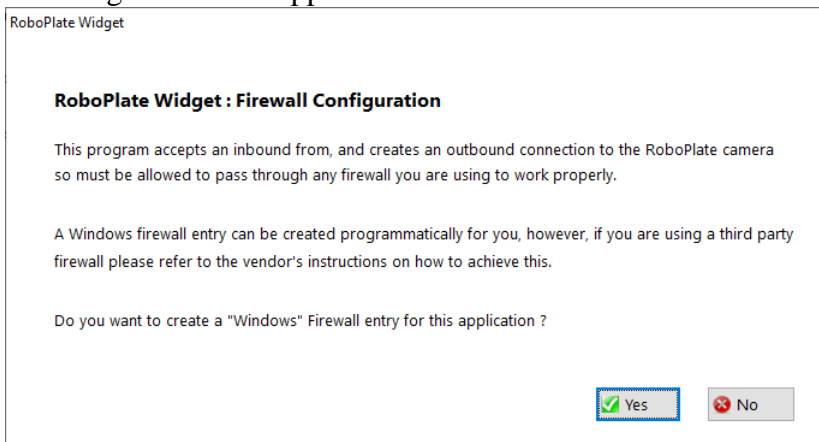
3. Select "**Yes**" and/or enter admin credentials for the admin user Windows prompt.



RoboPlate REGWatch Widget



4. Select "Yes" for the RoboPlate application to apply an inbound firewall exception, and wait for the dialogue box to disappear.

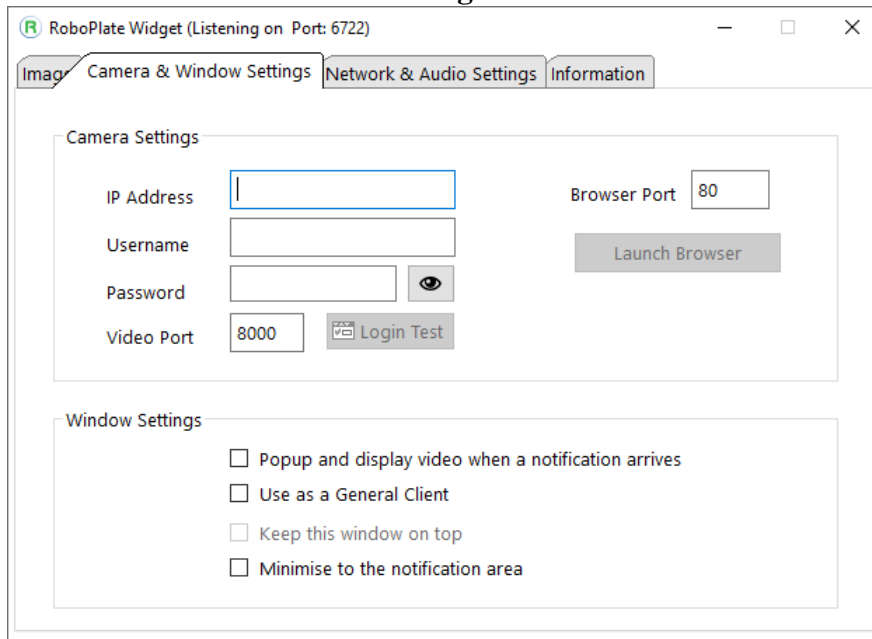


5. Restart the software manually after changing the firewall settings.

3.3 Required Settings

The following section describes the required settings in order to have the Widget display live video and receive notifications.

1. Go to Camera & Window Settings



The screenshot shows the 'RoboPlate Widget (Listening on Port: 6722)' configuration window. It has four tabs: 'Image', 'Camera & Window Settings', 'Network & Audio Settings', and 'Information'. The 'Camera & Window Settings' tab is active. Under 'Camera Settings', there are input fields for 'IP Address', 'Username', 'Password', and 'Video Port' (set to 8000). There is also a 'Browser Port' field (set to 80) and a 'Launch Browser' button. A 'Login Test' button is located below the 'Video Port' field. Under 'Window Settings', there are four checkboxes: 'Popup and display video when a notification arrives', 'Use as a General Client', 'Keep this window on top', and 'Minimise to the notification area'.

2. Camera Settings - Camera details are required for viewing purposes. This software uses the HikVision Video port.

Enter the camera details, then select **Save**.

IP Address

Username

Password

Video port (*Normally 8000*)

Once the settings are entered, select "**Login Test**" to confirm the connection to the camera.

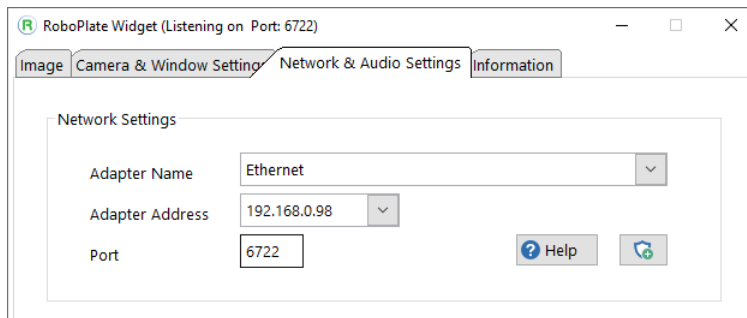
3. Action - LAN Relay - Setup is required for the camera to send the notifications to the software.

Setup via camera web interface, see [Action - LAN Relay](#)

3.3.1 Network - PC Settings

Before configuring the LAN Relay, check and make a note of the settings in the software for the PC.

1. **Adapter Name** - This needs to be your PC's current network adaptor in use.
2. **Adapter Address** - This needs to be your PC's IPV4 address
3. **Port** - This should be the port number your PC is listening on e.g. 6722...





3.3.2 Action - LAN Relay

The following section describes the settings in the camera for the software to receive LAN relay notifications.

Login to the camera's web interface using a browser in order to configure.

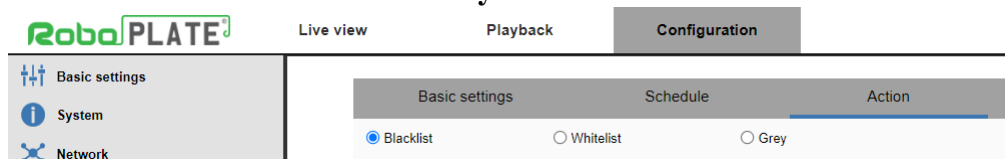
1. Go to **Configuration > Smart Video > ANPR > Actions**

Note: One IP address (PC running the Widget) can be entered into each of the black, white or grey list action.

For example:

- One IP address can be setup to trigger the LAN relay when a blacklist numberplate is detected and another IP address can be triggered for whitelist.
- Or black, white or grey list action can be set for the LAN relay to trigger all to the same IP address but with a different notification text.

2. Select **Blacklist / Whitelist or Grey.**



3. **Enable** - This must be enabled to send the notification / message.
4. **IP Address** - Same as the adaptor address, this needs to be your PC's IPV4 address.
5. **Port** - This should be the port number your PC is listening on e.g. 6722...
6. **Text Command** - Enter a meaningful message here (depending on if blacklist, whitelist or grey is selected on action)

Example : This action is set when a **grey** (unlisted number plate) is detected it will send "**Unknown Vehicle Detected**".

7. Select **Save**

LAN Relay

Enabled

IP Address

Port

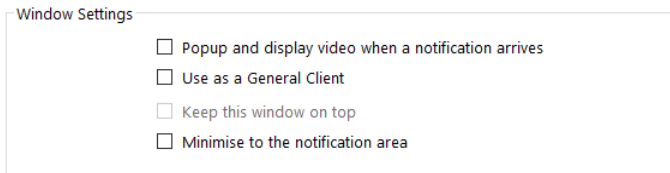
Text Command



3.4 Notifications - Window Settings

The following section describes the setup of how the software will function, display and notify the user.

Go to **Camera & Window Settings** then under **Windows Settings** the below settings are available:



- **Popup and display video when a notification arrives** will have the Widget display as a window when a notification from the camera arrives at the software.

- **Use as a General Client** can be enabled to have the Widget display the live video from the camera.

- **Keep this window on top** can be set to ensure the Widget will always display on the PC screen, this can only be enabled if **Use as a General Client** is also enabled.

- **Minimise to the notification area** will have the software when minimised go to the task tray on the PC (normally at the bottom right hand side).

3.4.1 Notifications - Audio Settings

Go to **Network & Audio Settings** then under **Audio Settings** the below settings are available:



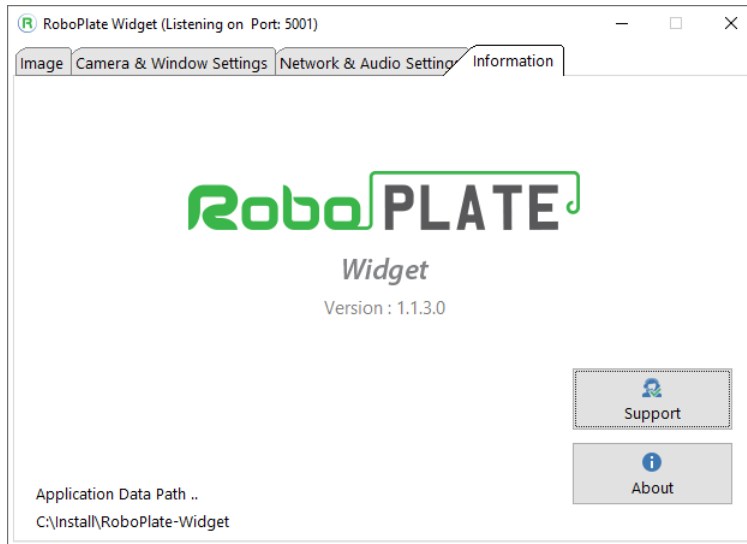
- **Play audio when a notification is received** will simply play an audio file (select with the audio file search).

Note: The audio file format required is .wav.

This is an alternative to the Windows[®] notification audio.

Information

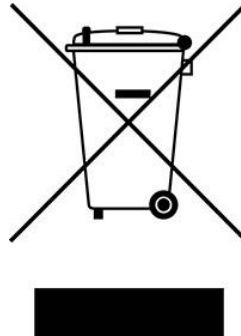
The information page is as follows;



- Software version
- Application data Path
- Support (help guides and instructions)
- About (versions and registration information)

Conditions

All specifications are approximate. System Q Ltd reserves the right to change any product specifications or features without notice. Whilst every effort is made to ensure that these instructions are complete and accurate, System Q Ltd cannot be held responsible in any way for any losses, no matter how they arise, from errors or omissions in these instructions, or the performance or non-performance of the equipment that these instructions refer to.



This symbol on the products and/or accompanying documents means that used electronic equipment must not be mixed with general household waste. For treatment, recovery and recycling please return this unit to your trade supplier or local designated WEE/CG0783SS collection point as defined by your local council.

© Copyright 2022

RoboPLATE is a registered trademark of System Q Ltd, Chesterfield. Derbyshire. S40 2WB