



Instruction Manual

SOFT1300

ZipVision - Zip DVR & NVR Client Software

2.9.82

© 2023 System Q Ltd

ZipNVR.com

Table of Contents

Part 1 Introduction	1
1 PC Requirements	1
2 Software Licensing	2
3 Limitations & Software Protection	2
Part 2 Installation	3
Part 3 Getting Started	4
Part 4 Account Login	6
1 Forgot Password?	7
Part 5 Configuration	8
1 Home	8
2 Tabs	9
3 Window Icons (Top Right Command Icons)	10
4 Adding a Device	11
Part 6 Mainview	13
1 Viewing Images	13
2 Controls and Features	15
View Selector	15
All Equipment	16
Custom Groups	19
PTZ / Coaxitron Control	19
Mainview Control Bar	19
Custom Layout	21
Viewing Window Control Bar	21
Alarm Bar	22
Part 7 Device Management	22
1 All Equipment	22
2 Auto Search	22
3 Grouping	22
4 Remote Settings	22
Part 8 Remote Playback	22
Part 9 Zip Video Player	23
Part 10 Cruise Setting	23
Index	0

Introduction

This program is written specifically for the Zip range of DVRs, NVRs and IP Cameras. Intuitive & modern software that's a breeze to learn makes monitoring and controlling your CCTV easy.

Key features include...

- Detailed search of CCTV recordings
- Detailed search of CCTV recordings
- Property Floor-plan or Site mapping Feature
- Relay control of gates, lights & more
- Allows Remote Configuration of your CCTV system

Modern, slick and easy to use are the best ways to describe the “ZipVision” software. It’s a feature packed software that has been designed in the UK and as a result is really intuitive to use without any real learning curve.

New additional features;

Main view - customised layout

More advanced DVR/ NVR remote setting control

Topology Management - search switch network structure (dedicated hardware coming soon - switches)

AI Search - Analyse and view face, human and vehicle, repeat visitors

Data Analysis - Analyse and display AI statistical graphs and heat maps (like cross counting and face attendance)

AI Scene - Display scenes of channels and groups and count the number of people entering or leaving

Cruise Setting - allows for management of custom device channel grouping - select specific channels from different devices to view in one mainview

1.1 PC Requirements

The recommended minimum system specification is:

- Microsoft Windows ® 7 or later
- Intel I5 (Quad core recommended)
- 32Bit Windows: 4GB / 64Bit Windows: 8GB
- Installation requires approximately 75Mb, additional space is required for long term storage of images
- internet connection is required for remote monitoring of a NVR over the internet

1.2 Software Licensing

Each PC installing the ZipVision Client Software requires a software licence key.

Each software licence key allows for up to 5 registrations to be made on separate PCs.

The software is a standalone product, for use on additional PCs, these require a licence in their own right.

Once installed on a PC you can only run single instance of the software on that PC and that no modification or virtualisation is allowed.

This software requires an Internet connection for registration, activation and support. Registration and activation is a single one-time task.

Likewise, to relinquish the licence, deactivation requires an Internet connection. Licence removal is possible during the un-installation process, you may then reinstall onto a new PC.

1.3 Limitations & Software Protection

The following limitations apply and are not supported, not allowed or have not been tested, nor will be tested :

- Windows Vista, XP or earlier
- Windows Server editions (2008, 2012 etc)
- Virtual environments such as VMWare,
- Virtual PC, Virtual Box and others
- Multiple instances of any individual executable
- Execution in the presence of a debugger/disassembler
- Changing the executable file name

The Zip DVR & NVR is Enigma protected.

Enigma is a commercial product providing copy protection, registration and activation features, for more information, see enigmaprotector.com.

Some antivirus packages generate warnings because of Enigma's presence so customers are advised to satisfy themselves that our code-signed modules are intact and have not been modified, then exclude them from further antivirus analysis.

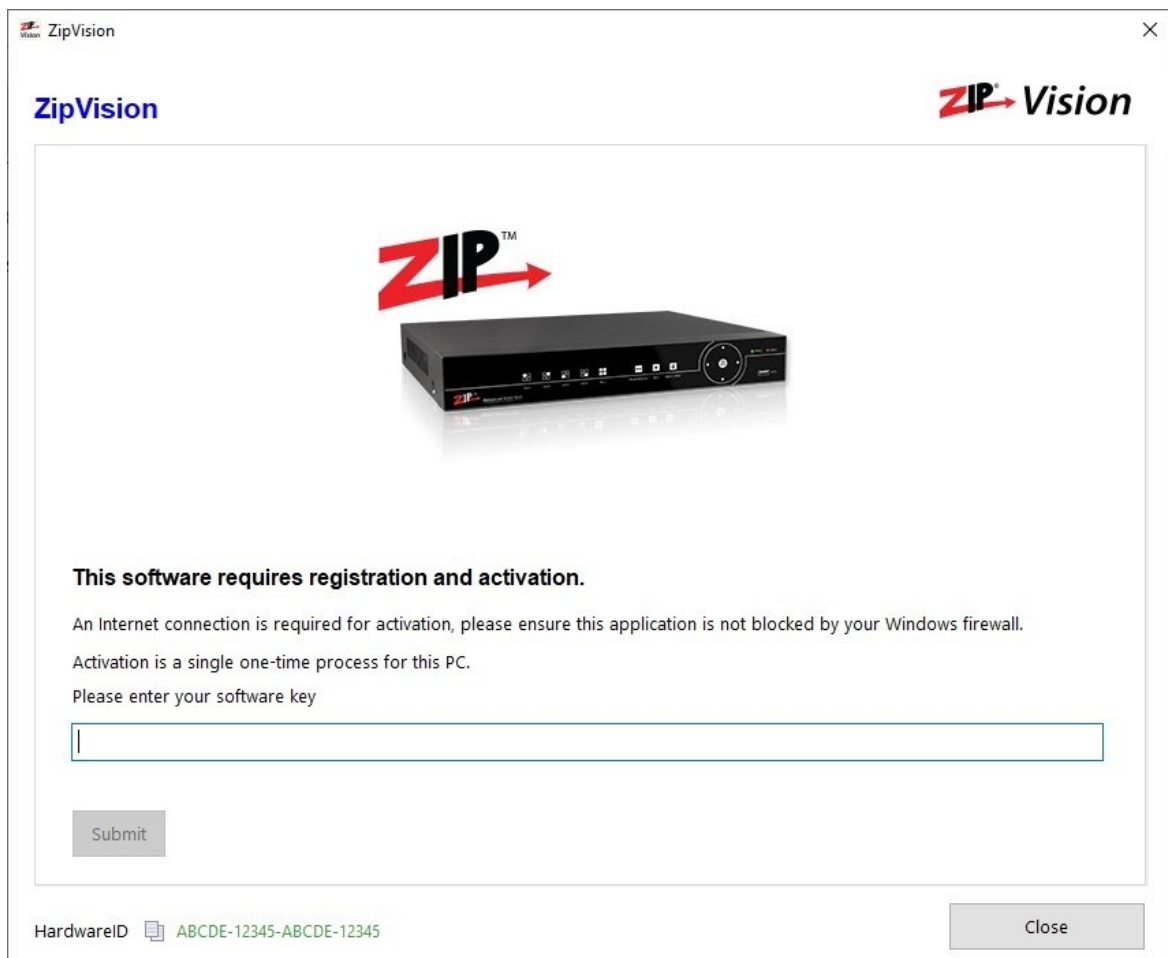
To check the validity of a code-signed executable via Windows File Explorer, locate, then right click on the file, select : Properties > Digital Signatures > Details.

Installation

Please ensure you have an Internet connection because the final step requires online activation before the program can be used.

Download the installer from softcctv.com using the instructions provided on the software certificate card.

Register the software using the software key provided on the certificate used to download the software, then run it.



Getting Started

Once the software has been registered, the user can then set a custom password for the software, and backup password protection questions.

This login password allows the user to protect the software from non-authorized users who have access to the PC.

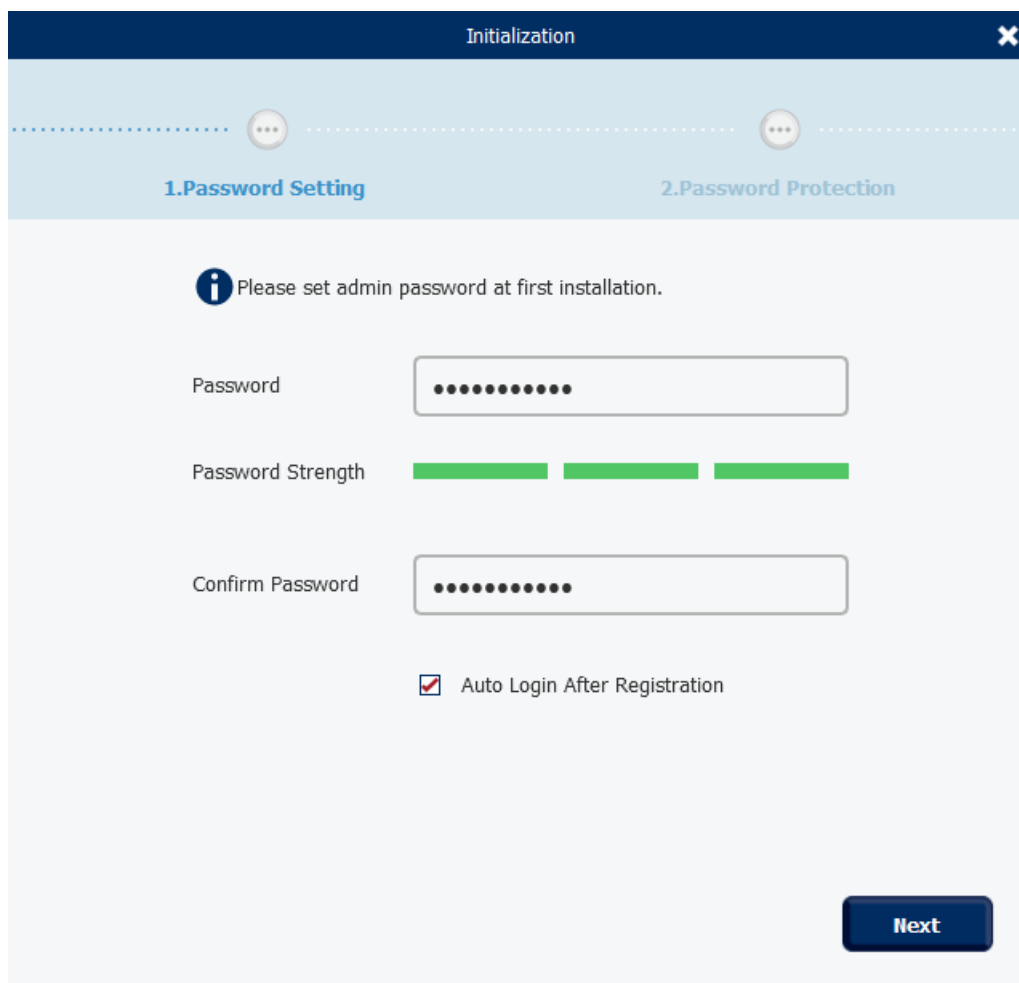
The password strength indicator will display green when a secure password has been entered.

Tick "**Auto Login After Registration**" to have the software automatically login to the software once the password and security questions have been setup.

The password must have a minimum of 8 characters.

The password field is case sensitive.

Letters, numbers and characters can be used.



The screenshot shows the 'Initialization' window with two steps: '1. Password Setting' and '2. Password Protection'. The first step is active. It includes an information icon and the text 'Please set admin password at first installation.' Below this are three input fields: 'Password' (with 8 dots), 'Password Strength' (with a green progress bar), and 'Confirm Password' (with 8 dots). There is a checked checkbox for 'Auto Login After Registration' and a 'Next' button at the bottom right.

Set the security questions and answers, (as a backup in case the main software password is forgotten or lost).

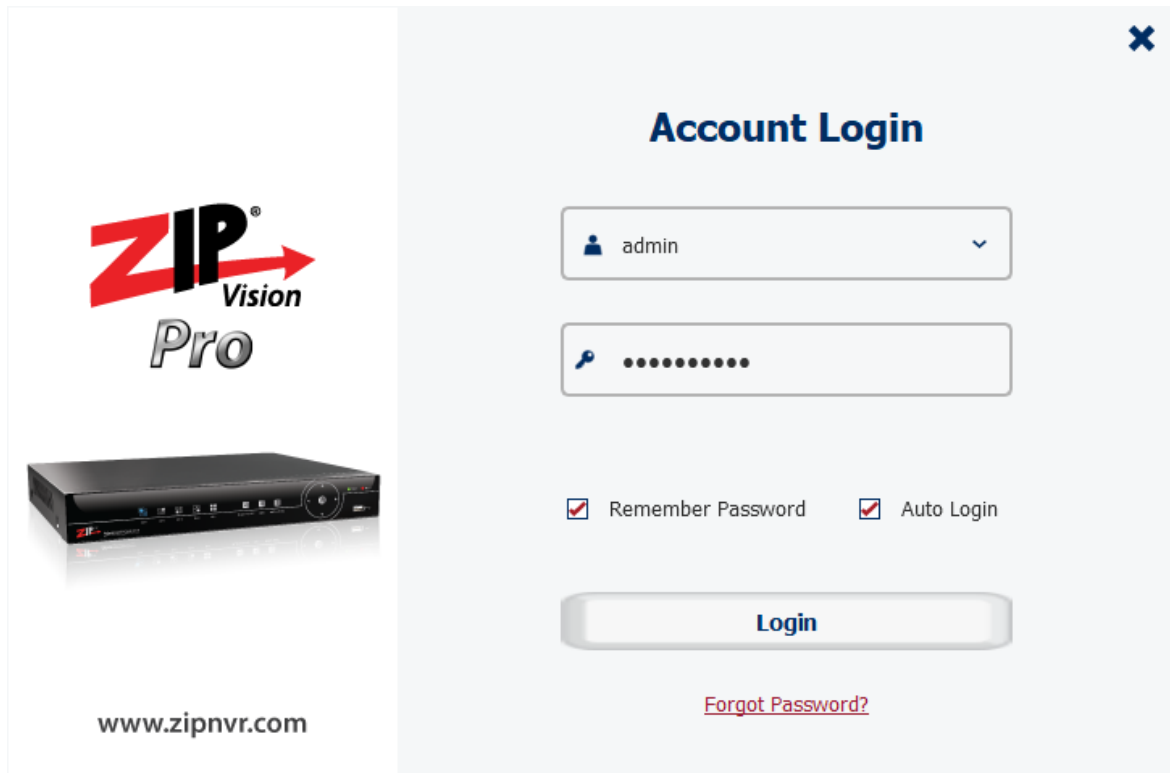
Answers are case sensitive.

The screenshot shows a window titled "Initialization" with a close button (X) in the top right corner. Below the title bar is a progress indicator with two steps: "1. Password Setting" (marked with a checkmark) and "2. Password Protection" (marked with three dots). An information icon (i) is followed by the text "Please set security questions." Below this, there are two sets of input fields. The first set is for "Question 1" with a dropdown menu containing "What is your nickname?" and a corresponding "Answer" text box. The second set is for "Question 2" with a dropdown menu containing "When is your father's birthday?" and a corresponding "Answer" text box. A dark blue "Finish" button is located in the bottom right corner of the form area.

Account Login

Once the software has been setup the software will ask for the login credentials as setup in [Getting Started](#) ⁴

To login simply enter the password then select **Login**.



Account Login

admin

.....

Remember Password Auto Login

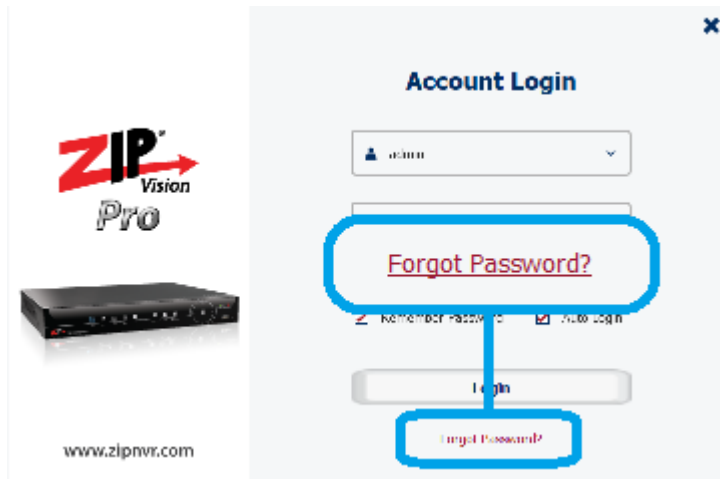
Login

[Forgot Password?](#)

www.zipnvr.com

4.1 Forgot Password?

If the password for the software is lost or forgotten then select the "**Forgot Password?**" button.



Enter the answers to the security questions, then select Next

Enter a new password and confirm password.

The password must have a minimum of 8 characters.

The password field is case sensitive. Letters, numbers and characters can be used.

Configuration

This is the main screen which is displayed when the software is running.

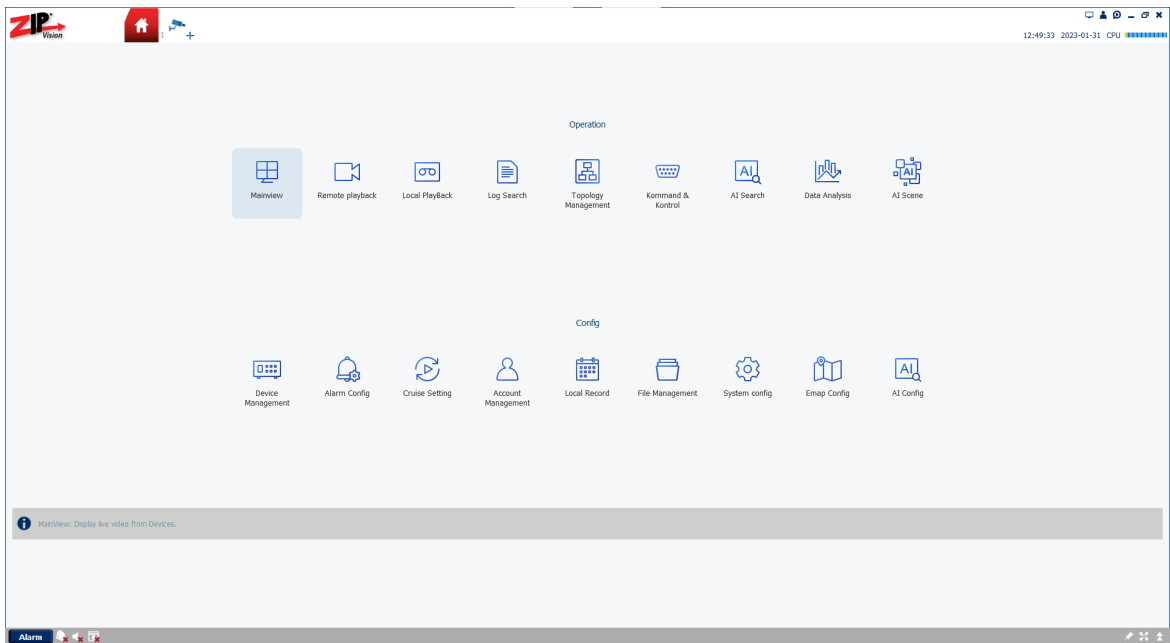
5.1 Home

This is the home screen which is displayed when the software is launched.

From here the Operation and Config options can be selected to open a new "tab" at the top of ZipVision.

For example; when Mainview is selected the tab will open for Mainview and add across the tabs at the top.

If the tab is already open then the software will load to this tab.



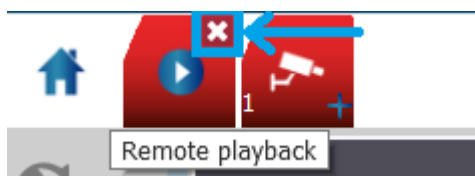
5.2 Tabs

Tabs can be moved around and closed at the top of the software.

To move a tab around click (left-click) > drag > let go to where the tab is required to be moved.

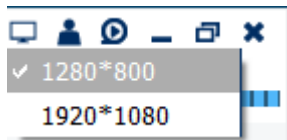


To close the tab click (left-click) the "close" button at the top right hand side of the tab.



5.3 Window Icons (Top Right Command Icons)

Resolution - The software can be set to two different pre-set resolution options;

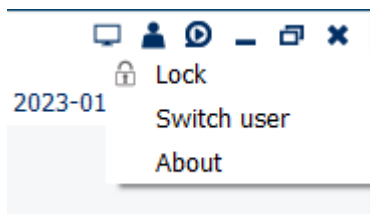


- 1280*800
- 1920*1080

Note:

The software cannot be a customised viewing size other than the two above resolutions.

Switch User;



Lock - The current state of the software will completely lock, preventing any user on the PC from being able to control / change the software viewing screen until the password is entered.

For example; if the software is used in retail for a security guard, who is there to monitor the cameras but wished to move away from the PC to investigate.

Switch User - The current user can be adjusted to another software user.

For example; if the software is used in a demo environment, standard users can use the software without having all the admin rights to adjust system settings in ZipVision, but can still Remote Playback or use the Mainview screen.

About - Shows the version number, copyright and acknowledgement statement.

Zip Video Player - When selected the player window will launch.

The player can be used to playback footage which is stored locally on the PC.

Using the [Zip Video Player](#) ²³

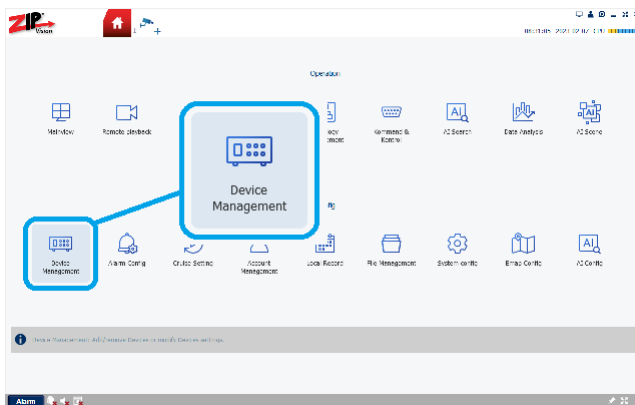
5.4 Adding a Device

Once your NVR, DVR or IP Camera is set up on the network. Then you can add the device to the software

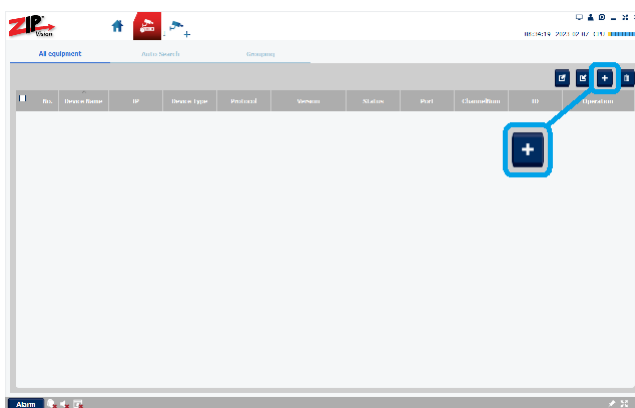
1. Go to the **Home Page**.



2. Go to **Device Management**



3. In **All equipment** click the add "+" button.



4. Enter the credentials for the device.

Device Name - This is customisable, set a memorable name for the device, for example; *Home CCTV* or *Pet Camera*

Login Type - Set depending on what type of connection used to connect to the device.

- When using a P2P ID for example; ZIPA12345ABC12345 then select **ID**.
- When using a Domain name or IP address for example; ABC12345.ippostcode.com / 192.168.1.xxx then select **IP**.

IP / ID - Enter the P2P ID or Domain/ IP address

Note:

When using a P2P ID this is case sensitive, and needs to be entered in upper case.

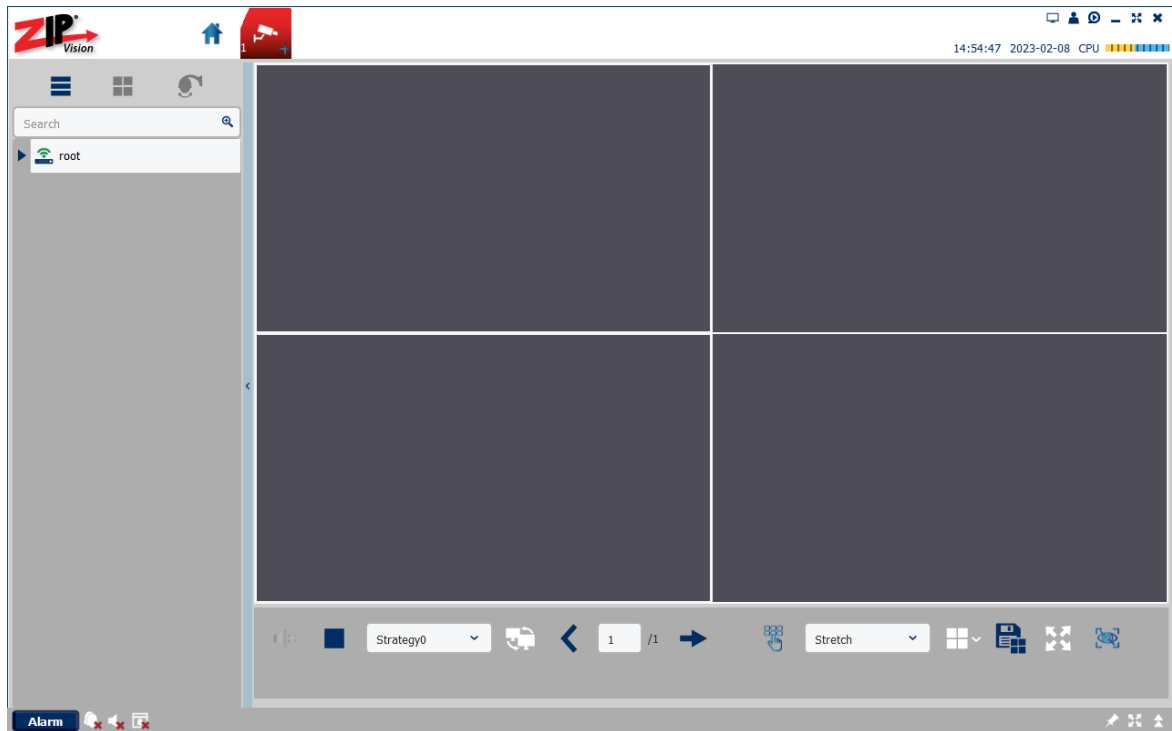
Protocol - As standard leave this on **ONVIF_Enhance** when connecting to any ZIP DVR, NVR or IP Camera.

User Name / Password - Enter the login credentials used to login to the device.

5. Once added see [Mainview](#)¹³ for viewing the device images on the software.

Mainview

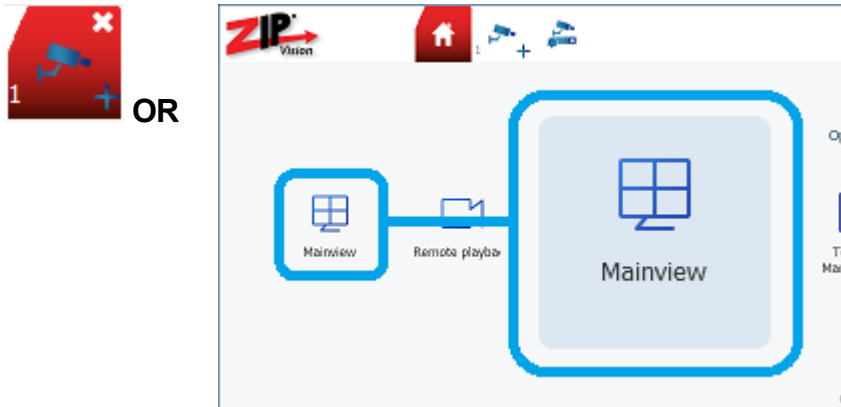
Once devices are added to the software then the images can be viewed, and controlled via the Mainview.



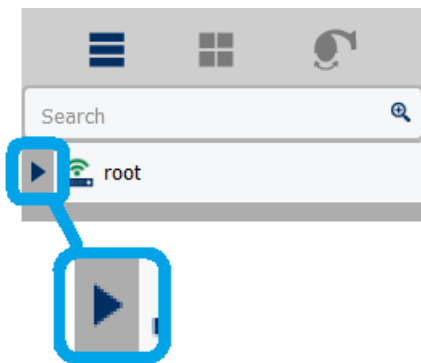
6.1 Viewing Images

Once devices are added to the software then the images can be viewed on the Mainview tab.

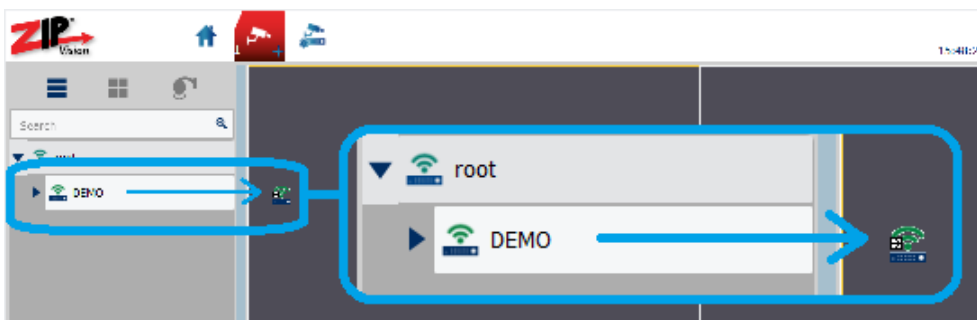
1. Select the **Mainview** Button at the top or in the Home page select Mainview.



2. Select the "play" button to expand the root.



3. Drag the device name to the middle of the screen to view the images.



6.2 Controls and Features

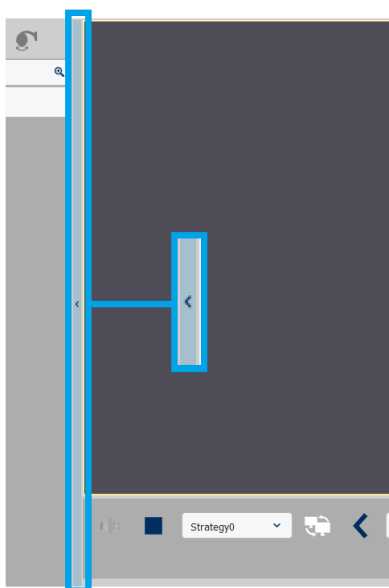
6.2.1 View Selector

At the top left hand side of Mainview is the view selector, the options are as described below.



Icon	Name	Function
	All Equipment	Default option - select to view the list of all the current online devices added to the software. See All Equipment ¹⁶
	Custom Groups	Select to view and edit current view groups. See Custom Groups ¹⁹ for setup
	PTZ / Coaxitron	The PTZ / Coaxitron Control ¹⁹ screen allows you to adjust the zoom, focus and menu settings of compatible cameras form the software. You can also control the movement of PTZ cameras, call presets or create new ones.


The view selector can be hidden or revealed by clicking the blue bar between the selector and the viewer.



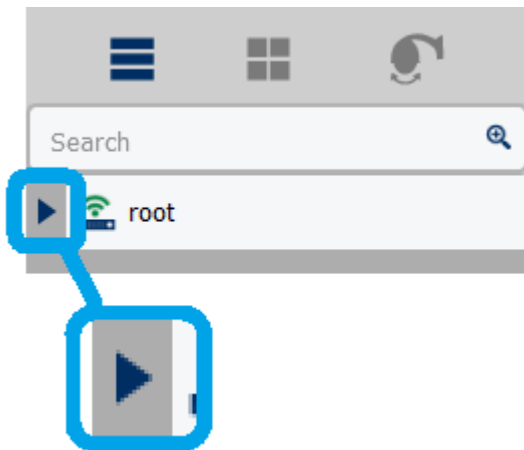
6.2.2 All Equipment

Search for device channel names in the search field.

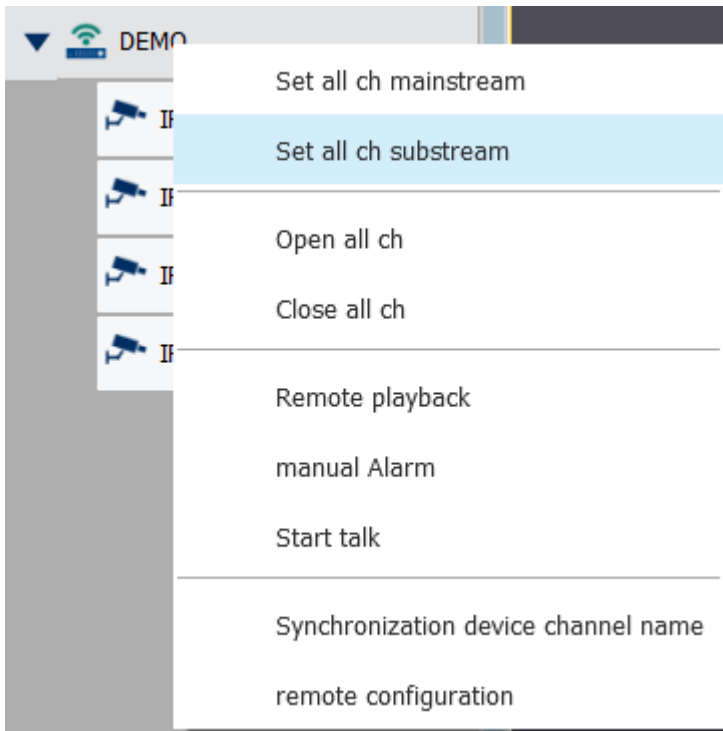
 

Click the "**Search button**"  once the name has been typed in.

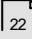
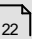
Expand using the "**play**"  button to expand the root.



Right-Click to show device control options.



Name	Function
Set all ch mainstream / substream	All the cameras currently displayed in the view window will display using the selected stream option Mainstream - Higher recording resolution stream set for that channel. Substream - Lower resolution stream set for that channel.
Open / Close all ch	Select to start / stop streaming all channels on this device in the view window

<p>Remote Playback</p>	<p>Select to open Remote Playback of the device.</p> <p><i>Warning - Be careful selecting this option if the device has more than 4 channels - as this will use a lot of internet bandwidth to the device and also processing power on the PC to decode the images, and can crash the software.</i></p> <p>See Remote Playback </p>
<p>Manual Alarm</p>	<p>Select to open alarm control panel to trigger remote alarm output on the device.</p> <p>Note: Will only work with recorders which support port 80 connection protocol.</p>
<p>Start talk</p>	<p>Select to start remote talkback to the remote device.</p> <p>Note: If the device supports two way audio (via RCA line output), this feature also requires a local microphone connected to the PC.</p>
<p>Synchronization device channel name</p>	<p>Manually synchronise the channel names currently set on the device to display on the software.</p>
<p>remote configuration</p>	<p>Select to access the device's remote settings.</p> <p>Note: Most but not all configuration that is available at the DVR/ NVR on the monitor is also available via the software.</p> <p>See Remote Settings </p>

6.2.3 Custom Groups

6.2.4 PTZ / Coaxitron Control


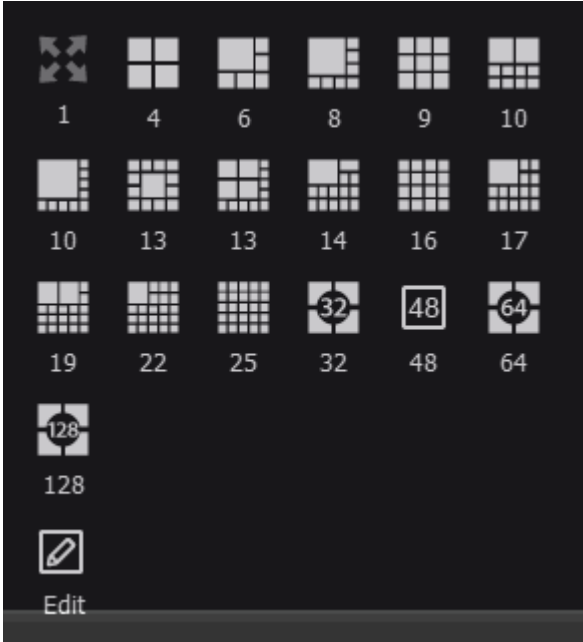



Enter topic text here.

6.2.5 Mainview Control Bar

Across the bottom of the Mainview screen there is a control bar. It has many of the same features as toolbars you find on mobile apps or PC media players. You will also find some useful tools specific to our Zip CCTV recorders as described below.



Icon	Name	Function
	Volume	Click to display the audio volume slider. Move the slider up or down to adjust the volume.
	Stop All Channels	Stop live view streaming.
	Select Cruise Strategy	Select specific cruise switching strategy, setup in Cruise Setting ²³
	Cruise	Start / Stop Cruise strategy.
	Previous / Select / Next Page	Use the left arrow to go back a page in the Mainview screen. When there are more cameras being previewed than the current viewing layout.
	Manual Alarm	Select to open alarm control panel to trigger remote alarm output on the device. Note: Will only work with recorders which support port 80 connection protocol.

	<p>Channel View Mode</p>	<p>Select to stretch the channel to the viewing window size, or to specific aspect ratio options or the original pixel resolution.</p>
	<p>Layout</p>	<p>Select the Mainview multi-screen layout displayed.</p> <p>This can be set to 1, 4, 6, 8, 9, 10, 13, 13, 14, 16, 17, 19, 22, 25, 32 48, 64, 128 or a custom layout</p> <p>This can also be edited to make a Custom Layout²¹</p>
	<p>Save View</p>	<p>Select to save the current mainview channels to a "tab" and "view group". See Custom Groups¹⁹</p>
	<p>Fullscreen</p>	<p>When selected the current view will occupy all of the display surface of the screen.</p>
	<p>Show Smart Alerts / Hide</p>	<p>When enabled a alarm bar pop-out window will appear on the right when smart alerts are detected by connected devices.</p>

6.2.5.1 Custom Layout

Enter topic text here.

6.2.6 Viewing Window Control Bar

Enter topic text here.

6.2.7 Alarm Bar

Enter topic text here.

Device Management

7.1 All Equipment

Exporting device information

Importing device information

Add device - See [Adding a Device](#)¹¹ for information on how to add devices to the software.

Delete device

7.2 Auto Search

7.3 Grouping

See [Cruise Setting](#)²³

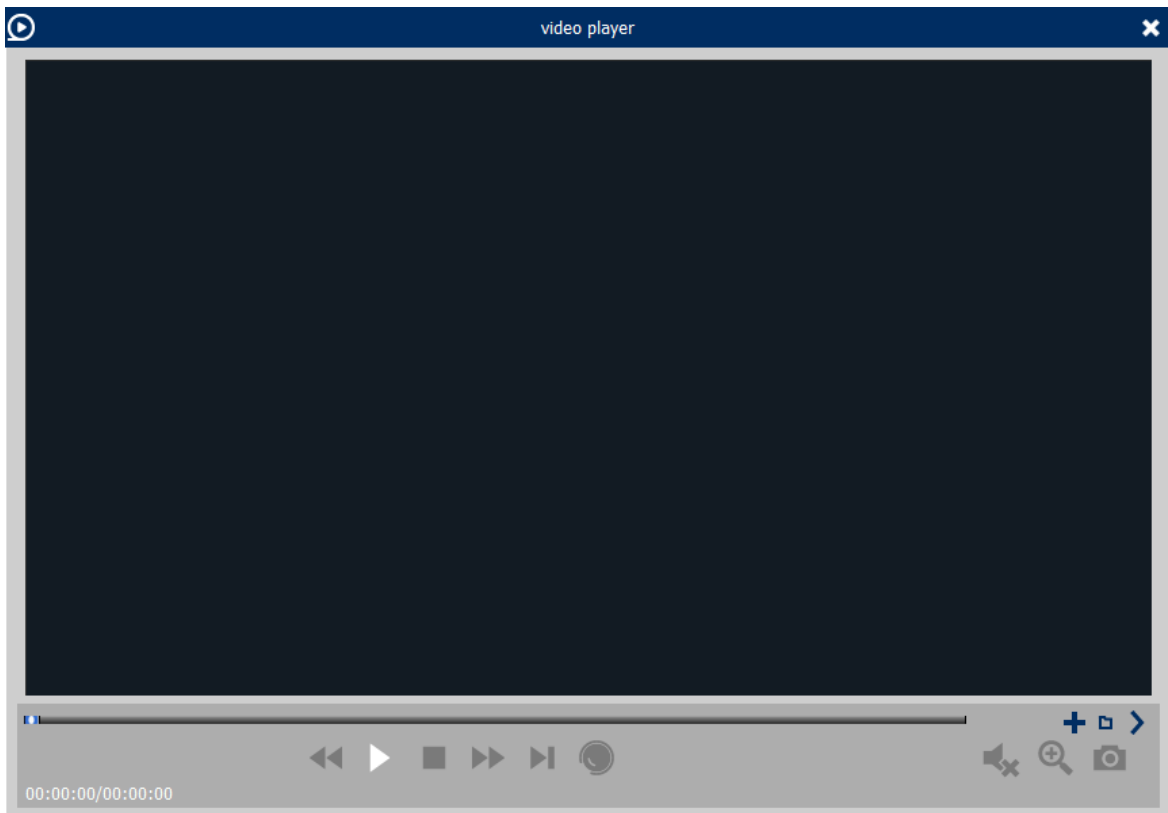
7.4 Remote Settings

Enter topic text here.

Remote Playback

Enter topic text here.

Zip Video Player



Cruise Setting

Enter topic text here.