

CCTVwindow

Client Software Instruction Manual



VERSION 3.02SW

Contents	Page
1. General Information	4
1.2 Computer System Requirements	4
1.3 Conventions	4
2. Software Installation	4
2.1 Installing the Software	4
2.2 Uninstall Software	4
3. Basic Operations	5
3.1 Login	5
3.2 Graphic User Interface (GUI) Introduction	6
4. Device Management	9
4.1 Area Configuration	10
4.2 Add Device	11
4.3 Channel Configuration	13
4.4 Channel Configuration for DVR9K series	14
4.5 Group Configuration	16
4.6 Sort by Camera Configuration	18
5. Preview	19
5.1 Non-cycle Preview	20
5.2 Cycle Play (Sequencing)	21
5.3 Preview Control	24
5.4 Recording & Capture	25
5.5 Others	27
6. PTZ Control	30
6.1 RS485 Parameter Configuration	30
6.2 PTZ Control	30
6.3 Presets	31
6.4 Patrol	31
6.5 Video Parameters Configuration	33
7. Recording	34
7.1 Client Local Recording	34
7.2 NVR Storage Server Recording Configuration	34
8. Playback	37
8.1 Remote VOD	37
8.2 Local Playback	41
8.3 Event Playback	43

9. Remote Configuration	45
9.1 Remote Recording Configuration	46
9.2 Alarm	51
9.3 Network Configuration	57
9.4 Network Configuration	59
9.5 Account Management	60
9.6 Others	61
10. Alarm Linkage	63
10.1 Linkage Configuration	63
10.2 On Arm & Off Arm	64
11. E-Map	66
11.1 Add Map	66
11.2 Map Configuration	67
12. Utilities	70
12.1 Software Configuration	70
12.2 Log Management	71
12.3 User Management	74

1. General Information

1.1 Overview

The CCTVwindow client is applicable to all Alien DVRs, the DVR9K, IP Traditional Cameras, IP Dome Cameras and the Video Bridge.

1.2 Computer System Requirements

- Operating System: Microsoft Windows 2000 or versions above
- CPU: Intel Pentium IV 2.4 GHz or models above
- RAM: 1Gb or above
- Display: 1024×768 or above, minimum 16 bit colour

1.3 Conventions

The following conventions are used in this manual:

- DVR, IP Camera, IP Dome and Video Bridge are all referred to as a ‘device’
- Click refers to clicking the left hand mouse button
- Double click refers to double clicking the left hand mouse button

2. Software Installation

2.1 Installing the Software

Double click the software and you will see the wizard shown.

Click “Next” to continue and input the user information and software installed location. After that, an SADP installation wizard will pop up. Now click “Next” to start to install WinPcap. If it is already installed, the installation can be cancelled.

Note: SADP (Scoped Address Discovery Protocol) is used as the on-line device finder. This function is unavailable if the WinPcap is not installed. SADP discovers the IP address of a device without knowing the address or subnet mask.

2.2 Uninstall Software

This software must be removed via Control Panel, Add/Remove Programs. Locate and highlight ‘CCTVWindow’ and click ‘Remove’.

Confirm the removal and allow the Installer to remove the application.

WinPCAP, if installed during the installation process must be removed manually – there is a separate item for this in Add/Remove programs as well.

3. Basic Operations

3.1 Login

This software has been set with a User of **admin** and a password of **123456**

When the software is initiated if the Automatic Login is ticked the username and password will be automatically retained and there will be no necessity to enter the username or password when logging in next time.



If the user wishes to change the password, then select a username and click Modify.

If the username or password is incorrect the following dialogue box will be displayed as shown below.

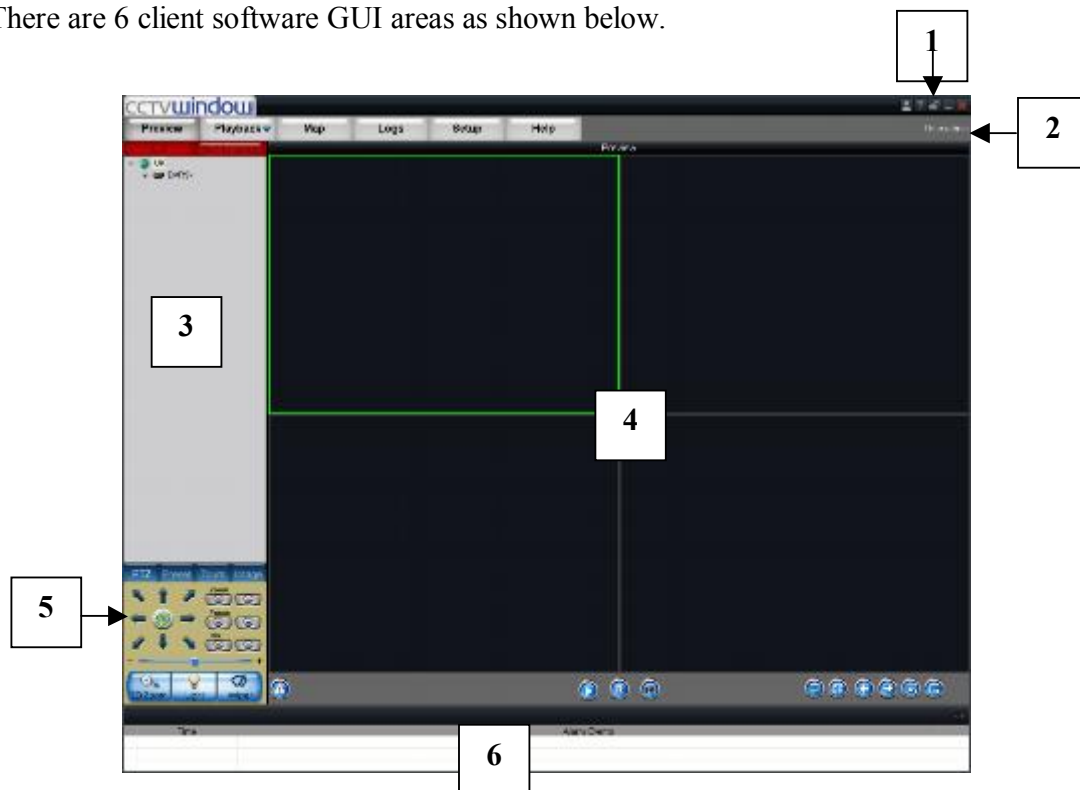


If the user wants to cancel the login, then click Quit.

SPECIAL NOTE: Please stop all operations (e.g preview, recording, playback etc.) before switching users.

3.2 Graphic User Interface (GUI) Introduction

There are 6 client software GUI areas as shown below.



Area	Description	Area	Description
1	System Area	2	Menu Area
3	Device Area	4	Preview Area
5	PTZ Control Area	6	Alarm Info Area

1. System Area:

Button	Description
	Lock button, click to lock the interface, mouse status shown as , re-click to activate login window, and input the correct password to unlock the interface.
	Minimize button
	Exit button
	Software user switch button

If you minimise the software by clicking on the – (minimise button), if you right click the icon at the bottom of the taskbar Preview, Setup, Remote VOD, Local Playback, Event Playback, Map, Log and Exit can be selected.

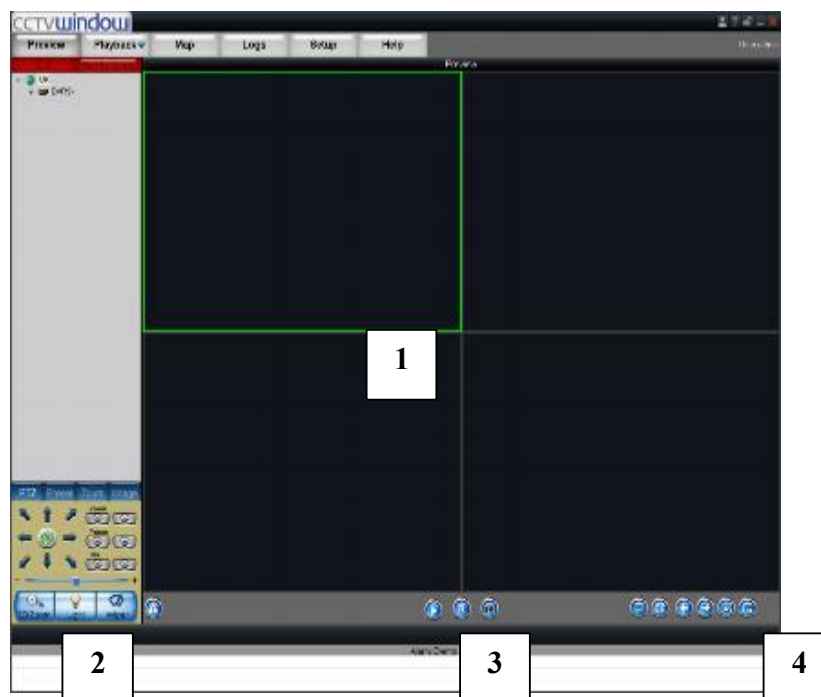
2. Menu Area:

Area	Description
Preview	Enter preview interface (If the decoding card is installed in PC, then enter the software or hardware decoding interface)
Setup	Enter configure interface
Playback	Enter playback interface, including remote VOD and local playback
Log	Enter log query interface
Map	Enter e-map interface
Help	Enter help (user manual) and about (software info)

3. Device Area:

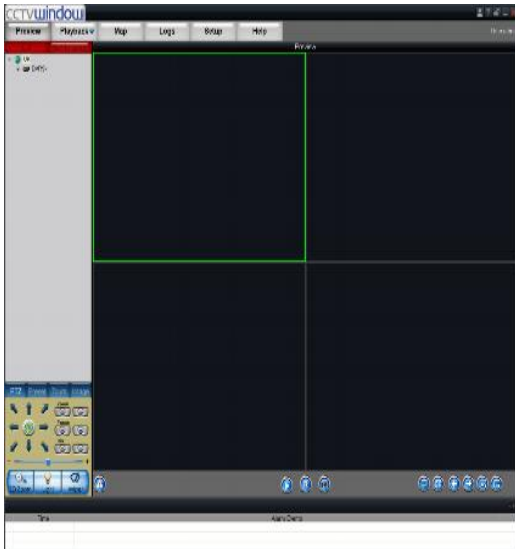
Mode	Description
List	Display by list
Sort by group	Display by group

4. Preview Area:



Area	Description	Area	Description
①	Display windows	②	Alarm indicator
③	Basic function	④	Advanced function

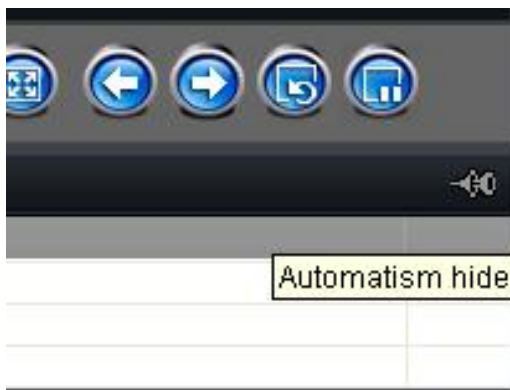
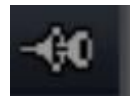
5. PTZ Control Area



PTZ	Control PTZ
Preset	Configure and call presets
Tours	Configure and call tours
Image	Brightness, Contrast, Saturation, Hue and Volume adjustment.

6. Alarm Info Area

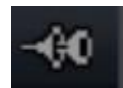
Display alarm time, information and alarm sign. The area size can be enlarged by dragging the top of the area upwards. You can fix the area size by clicking on icon



which turns to



but when it returns to



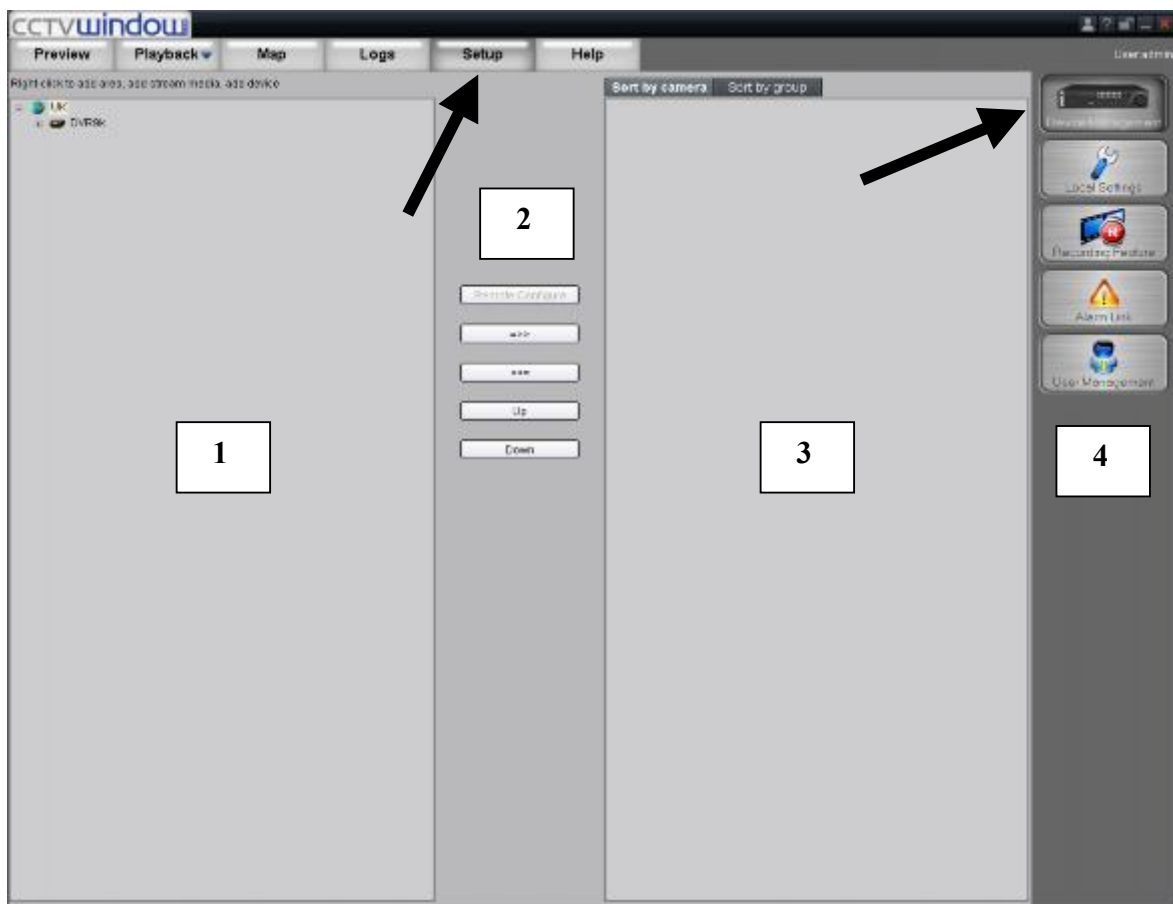
the area size will

resume to its original size.

4. Device Management

Before any operation of this software a device needs to be configured in the menu. By default a device called “DVR9K” is always set. As this software is used for DVRs, IP cameras, IP Domes and Video Servers you may prefer to use a different device name. You may use this device name, remove it and add another name that maybe more applicable or create an additional device.

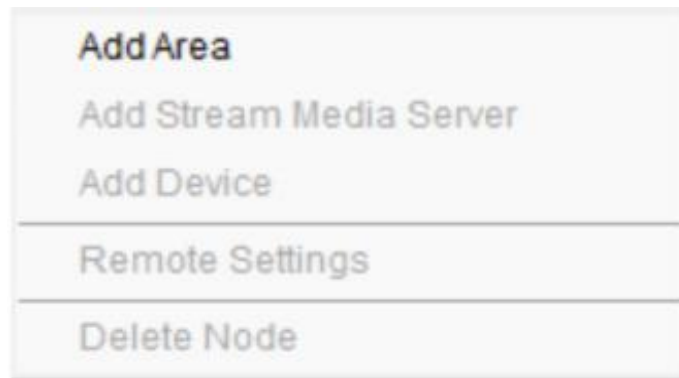
Click on Setup to enter configure mode and then click on Device Management.



Area	Description	Area	Description
1	List Area	2	Configuration Buttons
3	Group/Short key Area	4	Navigation Bar

4.1 Area Configuration

The software can be used to access various devices over a network and to allow for places to be created as reference points for different devices. These reference points are called areas. The default area is set as UK with a DVR9K. If you right click on the World icon and select Delete Node the default settings will be deleted. If you now right click in Area 1 you will see the following box displayed:



If you now left click on Add Area the following box will be displayed.

An "Add Area" dialog box is shown. It has a dark gray title bar with the text "Add Area". Below the title bar is a section titled "Area Information" which contains two input fields: "Area Name" and "Upper Area Name". The "Area Name" field is currently empty, and the "Upper Area Name" field contains the text "UK". At the bottom of the dialog box are two buttons: "OK" and "Cancel".

Enter the required Area name e.g UK, World, Town name etc. The first area created will only allow the Area Name box to be completed, but if you for instance have set an area name of UK and then set another area say Chesterfield by clicking on the UK icon, it will display Chesterfield in the Area Name and UK in the Upper Area Name.

NOTE: The following are invalid in the Area Name :- Enter, Space, Tab, null, % and “
The maximum number of areas that can be entered is 50 areas.

When you select Delete Node, the sub areas, stream media servers and devices under the root of the area will be deleted as well. Before attempting this you must stop preview or record, otherwise a warning information box will be displayed.

4.2 Add Device

Right click the Area and the following box will be displayed:



Left click on the Add Device option and the following box will be displayed:

The 'Modify Device Information' dialog box contains the following fields and values:

- Device Name: DS2MF-E
- Device IP: 172 . 8 . 114 . 111
- Username: admin
- Channel No.: 1
- DNS Address: 0 . 0 . 0 . 0
- Device serial: DS2CD852MF-E0020080925BCWR200091083WC
- Register Mode: Normal IP
- Port: 8000
- Password: *****
- Multicast: 0 . 0 . 0 . 0
- Belong to area: mfb

Buttons at the bottom: 'Online Device', 'OK', and 'Cancel'.

Options	Description
Device Name	User-defined
Register Mode	Normal IP, Private Domain, Normal Domain
Device IP	IP address of the device
Port	Device port (default: 8000)
User Name	User name of the device (default: admin)
Password	Password of the device (default: 12345)
Channel No.	The channel number of the device
Multicast	Used when visiting the device by the way of multicast, or else leave it blank
DNS Address	Used as IP address of IP server when adopting private domain, or else leave it blank
Device serial	Used when adopting private domain, or else leave it blank

Normal IP mode

The default register mode is the **Normal IP**. After input the IP address, username, password, port and channel No. Click the “OK” button to finish adding device.

Device Information	
Device Name	352MF-2
Device IP	172 . 8 . 114 . 111
Username	admin
Channel No.	1
DNS Address	0 . 0 . 0 . 0
Device serial	DS2CD852MF-E00200809258CWR200091083W/C
Register Mode	Normal IP
Port	8000
Password	*****
Multicast	0 . 0 . 0 . 0
Belongs to area	mib

Normal Domain mode

If you select normal domain, please fill in the blank domain name with the registered domain name.

Private domain: If you configured the device with the address of IP Server that runs normally, then the connected device can be resolved by IP Server; and the software can get the dynamic IP address from IP Server by server name or serial number.

Device Information	
Device Name	8016HF-1st Floor
Domain Name	oc.xcp.net
Username	admin
Channel No.	16
DNS Address	.
Serial Number	DS-8016HF-S0220000721ABWR010662954WCVU
Register Mode	Normal Domain
Port	8000
Password	*****
Multicast	.
Belongs to area	Center

Private Domain mode

If you select private domain, please input the correct device serial number and IP address of IP server in the DNS Address blank.

Device Information	
Device Name	8016HF-1st Floor
Device IP	.
Username	admin
Channel No.	16
DNS Address	172 . 8 . 1 . 3
Serial Number	DS-8016HF-S0220000721ABWR010662954WCVU
Register Mode	Private Domain
Port	8000
Password	*****
Multicast	.
Belongs to area	Center

Note: When adopting a private domain, if you input device serial number, the software will obtain the IP address from the IP server; If not, the IP address can be obtained by using device name to resolve IP server, i.e. in that case, the device name here should be the same with the one in the device. Click OK to finish adding device.

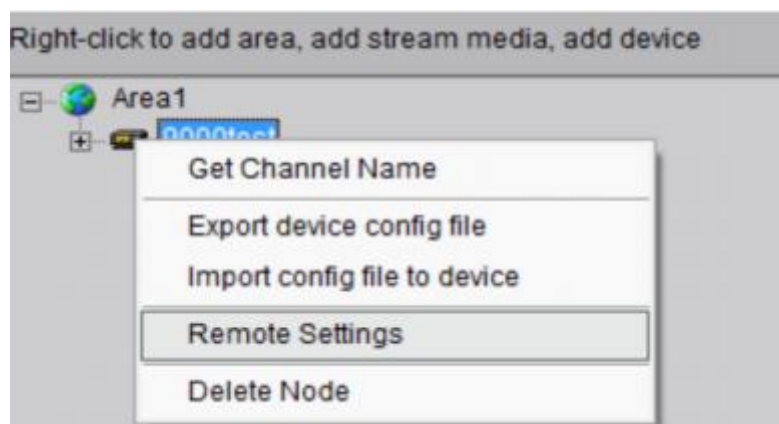
Right-click menu is available, double click the node can modify the device parameters.

Note: 50 devices can be added here.



4.3 Channel Configuration

Click on Get Channel Name to get the names of all channels.



Double click the channel name and the Modify Channel Information dialogue box will be displayed. Note that Main Stream is for device encoding and Sub Stream is for network transmission.



Channel Name	Current channel name that can be changed.
Channel	Channel number of the device, unchangeable
Device Name	Device name that unchangeable
IP Address	Device IP address that unchangeable
Protocol	Select connection protocol: TCP, UTP, MCAST and RTP.
Stream Type	Choose main or sub stream for the channel

NOTE: The channel name will be replaced with the name saved in the device, if the option Get Channel Name is selected.

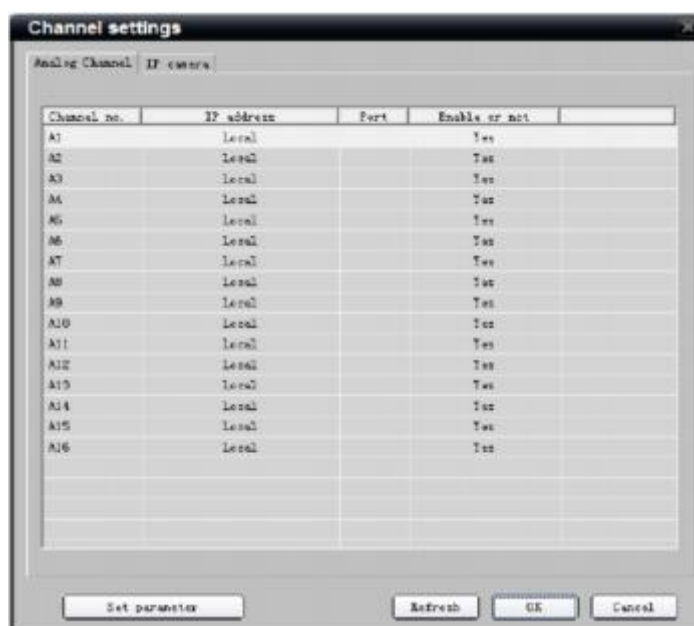
4.4 Channel Configuration for DVR9K series

If this software is used with the DVR9K series then the IP channel management and enable or disable analogue channel functions are available.

Right click the device name and select “Remote Configuration”, then the “Channel Configure” menu will pop up. The “Analogue Camera” will show by default.

Double click the selected analogue channel to enable or disable it.

Note: The DVR9K series cannot preview and record this channel after it is disabled, unless it is enabled again.



Click “IP camera” to enter the interface of IP channel management.

Click “Add” to add IP channel.

Input the IP address, user name, password and port, and then click “OK”.



Double click the selected channel to modify the parameters.

Click “Delete” to delete the selected channel.



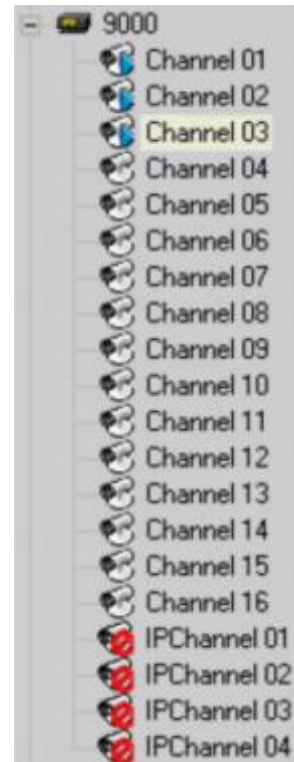
After that, you can change the channel number according to the added channels. Double click the device name to modify the device information.



Note: The DVR9K Hybrid supports adding of up to 16 analogue channels and 8 IP channels but please refer to the User Instruction Manual for more details.

After that, the added IP channel will be seen in the channel list of the device.

If IP channel cannot be connected, the icon will be shown as

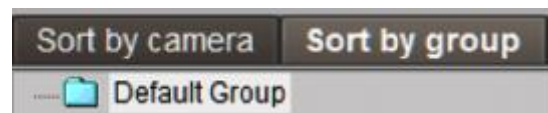


4.5 Group Configuration

Click the **Sort by group** button to enter group area management window.

4.5.1 Sort by group

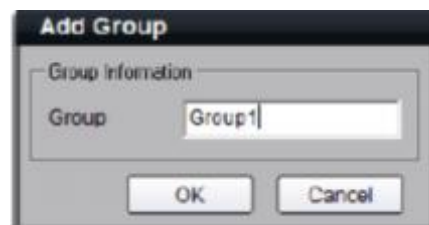
There is the default group. You can add channels in it or delete it.



Right click in the empty area and you will see sub menu as shown on the right. Select "Add Group".



Input the group name and click "OK".



Double click the group name to change the group name.



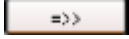
Right click the group name and select “Delete Group” to delete the selected group.

Note: Enter, Space, TAB is invalid in the group name, which cannot be null, and should not contain the following characters, including % and '.


4.5.2 Channel

After adding the group, the channels in the list area can be moved to selected group.



Channel Add

Select the channel from the list area, and click  key and move it to the selected group. The type of channel name in the group area is as “device name channel name of the list area”.




Select the device in the list area and click  key and all the channels of the device can be moved to the selected group.



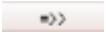
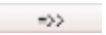
Using  and  keys to adjust the channel sequence in the group list.

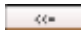
Channel delete

Use  key to delete the channel or group in the group area.

Note: One channel can be added to one group only once. Different groups can contain the same channel. Max 50 channels can be added to one group.

4.6 Sort by Camera Configuration

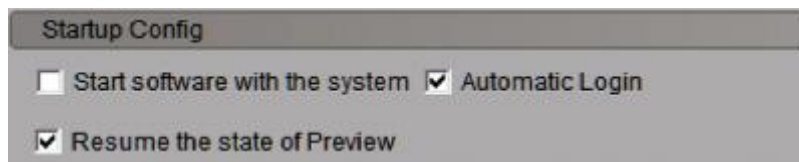
Click **Sort by camera** button to enter short key management window. Only the channels can be added to the sort by camera area. Select the channel from the list area, and click  key and move it to the sort by camera area. The type of channel name in the group area is as “device name channel name of the list area”. Select the device from the list area, and click  key to add all the channels of the device to the sort by camera area.

Use  key to delete the channel in the sort by camera area.

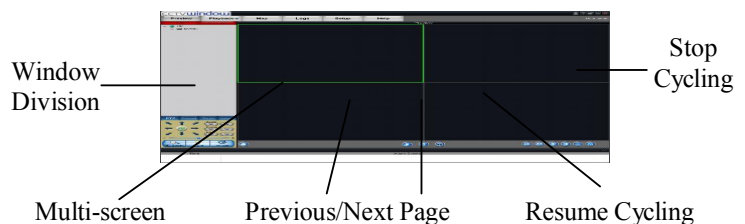
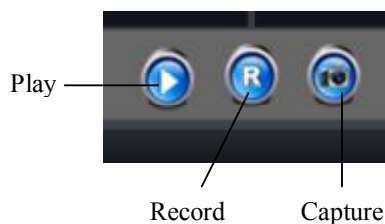
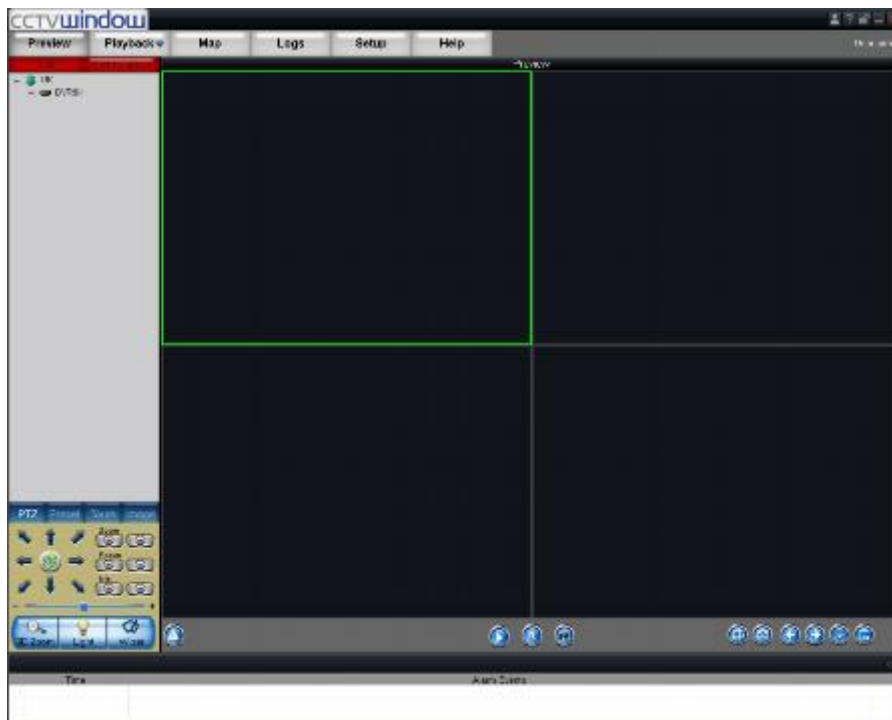
5. Preview

After configuring the device, double click the **Preview** key to return to the preview interface. Click the “List” and “Group” keys to switch between two modes.

Click **Setup** key and then **Local Settings** key and **Advanced** button to enter “Advanced Configuration” and enable **Resume the state of Preview** option to save current preview state including window division and preview channel for next login.



Play windows are divided into 2×2 mode, max support 64 window divisions.



Note: The window division and channel sequence can be remembered by the Client Software on exit and will play automatically after login next time.

5.1 Non-cycle Preview

5.1.1 Play by Node

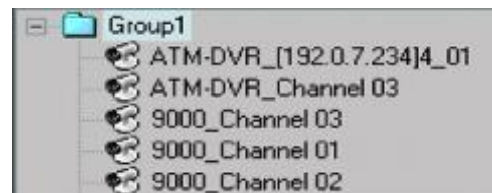
Double click the device name or drag it to the play window to preview (not enable cycle preview)

Double click the channel name to preview the corresponding cameras.



Double click the device name to preview the corresponding cameras of the device in the current window divisions.

Double click the group name to preview the corresponding cameras of the group in the current window divisions.




You can also preview them by dragging them to the play windows. The play window shows as the figure on the right.




5.1.2 Sort by camera Preview

Sort by camera mode

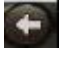

In the device list mode if the sort by camera has been configured, press  button of the preview interface to view all the corresponding channels in the sort by camera area in the current window divisions. If the channel number is larger than the window division

number, user can click  and  to change the page to preview. Find more details at **4.6 Sort by Camera Configuration**.

Sort by group mode

Click the “Sort by group” to go to this mode, if the sort by group has been configured, then press  button in the preview interface to view all the corresponding channels

in the sort by camera area in the current window divisions. If the channel number is

larger than the window division number, user can click  and  to change the page to preview. Find more details at **4.5 Sort by group Configuration.**

5.1.3 Stop Playing

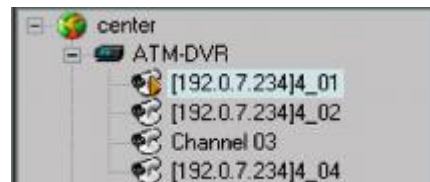
There are 3 ways to stop live preview.

Double click the channel to stop playing.


The play icon is  so double click it to

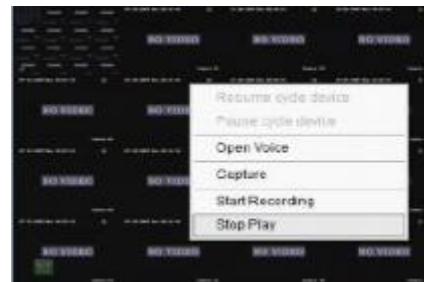
stop previewing this channel and the icon

will then become



Right click video to stop playing

Right click in the play window and the play menu will display. Click “Stop Play” and the live view will stop. Meanwhile the play icon will become 

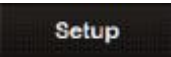


Stop all playing

Click the key in the preview panel to stop all the live view channels.

5.2 Cycle Play (Sequencing)

5.2.1 Cycle Configuration

Click  key to enter the configuration interface. Then enter the local configuration by clicking “Software Configuration” key.



Enable Cycle:

Tick Cycle Play and input the cycle time, then press “Save” and return to preview interface.

Note: Cycle time should be between 20 and 300 seconds.

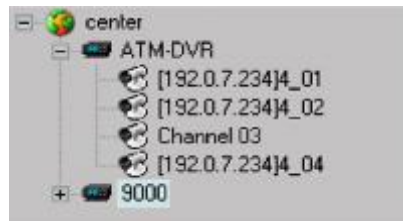
Disable Cycle:

Click to disable Cycle Play and save.

5.2.2 Cycle Play of Device/Group

Start cycle

Double click the device name and all the channels of the device begin to cycle in the selected window division from the 1st channel.



Double click the group name and all the channels of the group begin to cycle in the selected window division from the 1st channel.

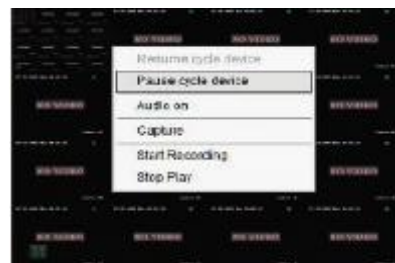



Drag the node of the device to the window, and then all the channels of this device begin to cycle. Drag the node of the group to the window, and then all the channels of this group begin to cycle.



Pause/Resume Cycle

If the current window is in the device/group cycle mode, right click the cycling window, click “Pause cycle device” or “Stop cycle group” to pause cycling to retain the current image.



Click “Pause cycle” key  to pause all the cycling window divisions.

If the current window is in the device/group cycle mode, right click the paused window, click “Resume cycle device” to restart cycling.




Click “Resume cycle devices” key  to restart all the paused channels.


5.2.3 Mixed Cycle

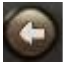
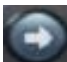
Mixed cycle mode enables the software to sequence preview channels by group or sort by camera. The default window division is 2×2.


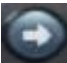
Sequence Sort by camera Channels

Click “List” key to display channel list.

Click  key to start mixed cycle play. Take 2×2 window division for example, if there are 8 channels in the sort key area, then start cycle playing, the first 4 channels will be displayed in the window, then after one cycle period, the last 4 channels will be displayed in the window.


Click  button in the preview panel to stop sequencing.



Click  key to display the first 4 channels, click  key to display the last 4 channels.



Note: Click button  or  to pause the channel sequence cycle of sort by camera. This function needs sort by camera configuration first.

Sequence Group Channels

Click “Sort by group” key to display group channel list. (Please stop playing before switching to group channels.)

Click  key to start mixed cycle play. Take a 2×2 window division for example. If there are 2 groups in sort by group area and each of them has 4 channels, then start cycle playing and 4 channels of the first group will be displayed in the window. After one cycle period, 4 channels of the second group will be displayed in the window.

Click  key to display the first 4 channels or click  key to display the last 4 channels.

Note: Click button  or  to pause the channel sequence cycle of sort by group. This function needs sort by group configuration first.

5.3 Preview Control

Full Screen:

When previewing, click  key to preview in full screen or to exit click  key.

Enlarge:

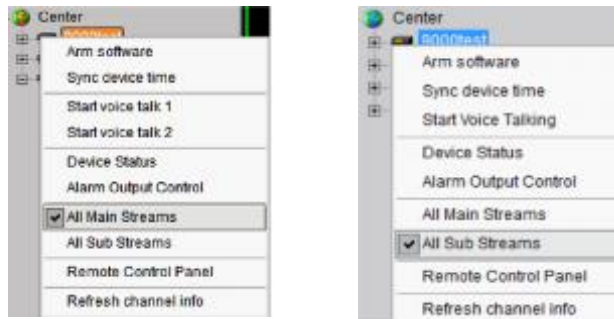
When in the multi-screen preview mode, double click the selected image to enlarge it or double click again to resume.

Main/Sub Stream:

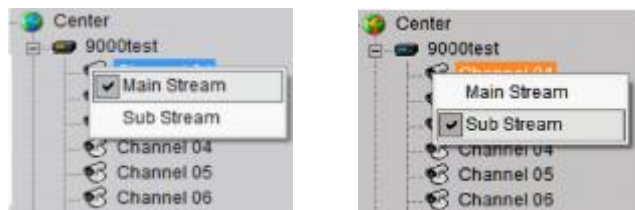
Main stream is for recording and sub stream is for network transmission when bandwidth is low. The stream will take effect after re-previewing the device or channels.

The software uses the main stream by default but if needed the user can switch to sub stream to preview.

Right click device name and select “All Main Streams” or “All Sub Streams” to change the device stream type.



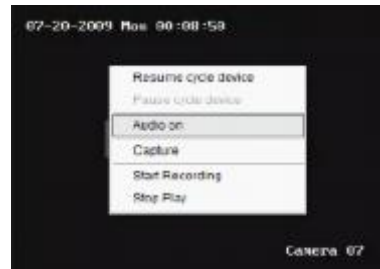
Right click channel name and select “All Main Streams” or “All Sub Streams” to change the channel stream type.



Note: The sub stream preview needs the device to support or else the sub stream preview will fail.

Voice Control

Right click the selected window, select “Audio on” to enable audio preview, right click again and select “Close Voice” to disable audio preview.



Note: The software only can open voice of one window at the same time. If the voice of the next window is opened then the voice of the previous will be closed automatically.

5.4 Recording & Capture

Recording and capture is only available in the live view mode.

Note: If the channel is in the recording mode, click “Stop” button to stop recording, and the preview, cycle play are stopped as well.

5.4.1 Recording


Record disk configuration

Configuration Path



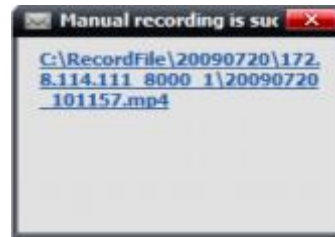
Select the saving hard disk of recorded files in **Store setup**. Note that the files will be found into a “RecordFile” directory. This directory will be created by this client if necessary assuming the Windows user account has the necessary rights, otherwise local recording will fail.

Immediate record

When previewing, click  key to start recording and the icon turns red.

The channel icon turns darker. Click the record button to stop recording.

After recording, the hint window with index of recorded files will be displayed. Click the hint to open the target folder.



5.4.2 Capture

Configuration Path:



Image format configuration



Format	Selection	Instruction
JPEG	<input checked="" type="checkbox"/>	Resolution and image quality can be changed.
BMP	<input type="checkbox"/>	Resolution and image quality can't be changed, capture depending on current channel parameter

Path configuration

Default saving path: C:\Picture, click  key to change the saving path.



Capture

When previewing, click  key to start capture.

After capture, the hint window with capture index will display. Click the hint to open the target folder.

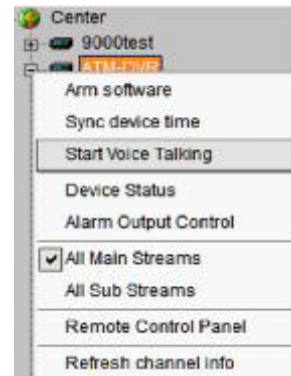


5.5 Others

5.5.1 Voice Talk & Broadcast

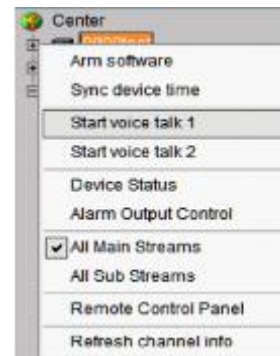
In preview interface, right click the device name and the sub menu will be displayed.

Click “Start Voice Talking” to talk to the selected device.



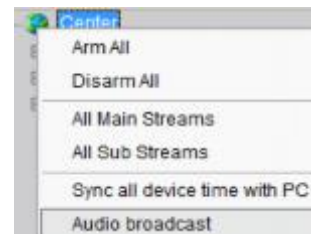
If the device is a DVR9K, then there will be two voice talk channels.

Note: Client software only supports one voice talk at the same time.



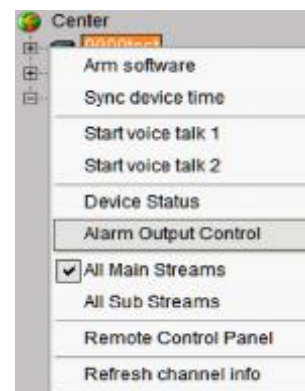
5.5.2 Audio broadcast

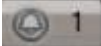
Right click area name and select “Audio Broadcast” to talk to the area.



5.5.3 Alarm Output Control

Right click the device name and the sub menu will display. Select “Alarm Output Control” to turn on or off the alarm output, and define alarm output name.



Click  and it changes red in colour, turns on the alarm output and activates the name modified function. A re-click of the key will turn off the alarm output.



5.5.4 Device Status

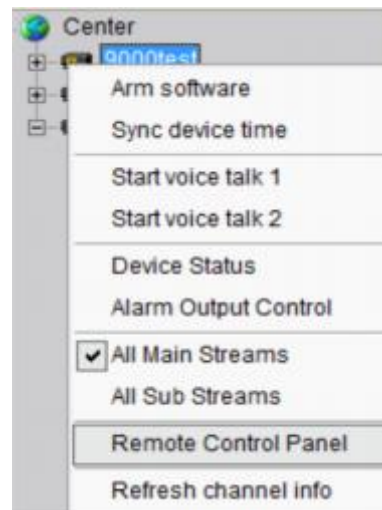
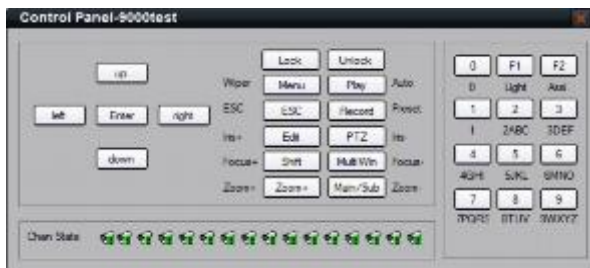
Right click the device name and the sub menu will display. Click “Device Status” to get device working information, including channel and hard disk status.



Note: Some options will turn grey and become unavailable if the device doesn't support them.

5.5.5 Remote Control Panel

Right click the device name and the submenu will display. Select “Remote Control Panel” and the control panel will display as shown. You can click the buttons on the panel and control device similar to using the front panel DVR.



5.5.6 Two Screen Preview

If the computer is connected to two monitors and opened, there will be a **Two Screen** button displayed.



Click this button to reveal a drop-down menu that includes **AUX screen preview**, **Electronic map** and **Remote VOD**.

Click **AUX screen preview** and the second monitor will display the preview window.



The aux screen operation is the same as the main screen so refer to the earlier chapters.

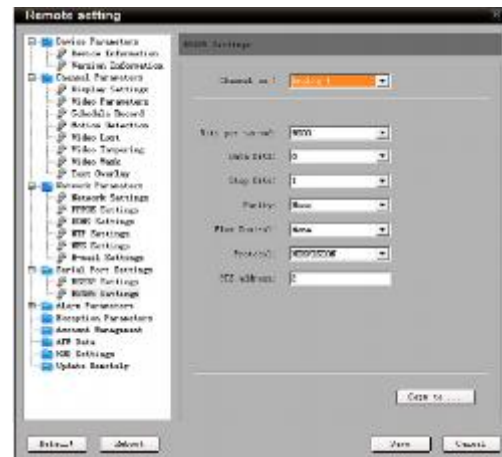
Note: If the main screen displays 64 divisions, the aux screen will not open. After opening the aux screen, they both support a maximum of 32 window divisions.

6. PTZ Control

6.1 RS485 Parameter Configuration

Before PTZ operations, please make sure that RS485 parameters have been correctly configured in software.


Click **Setup** and enter the corresponding interface. Right click the device name and select **Remote Configuration** from the submenu. Click on + to reveal drop down options, shown in figure on the right. Set correct parameters for the each channel.



Note: RS485 configuration must be the same as the PTZ configuration.

6.2 PTZ Control

Return to preview interface and user can control PTZ. There are 8 keys to control PTZ directions, and the active bar to change PTZ speed, which is adjustable from 1 to 7 and default speed is 4.

Click  key to start auto scan.

Click the function keys on the right to adjust focus, iris and zoom.

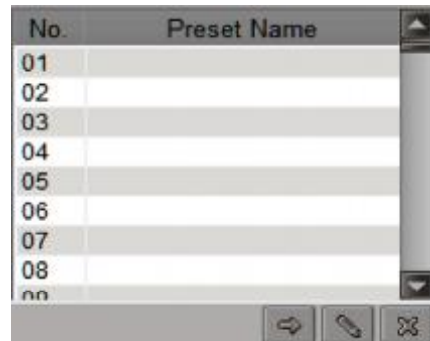



Other PTZ Control Mode – Screen PTZ Control: user can control PTZ by dragging and click in the play window.

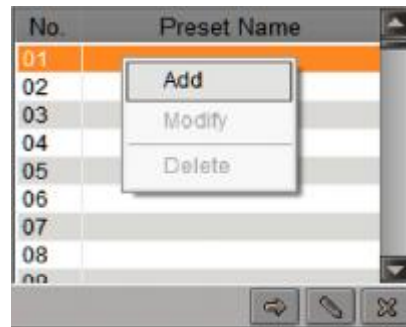
6.3 Presets

Select one channel and click the Preset key on the PTZ control panel and enter preset edit window.



Select one play window, and right click the preset list or click to add, modify and delete preset.



Select one play window, and right click the preset list or click  to add, modify and delete preset.



Move the PTZ to the position you want, and click **Add** to input preset name, then click OK to finish.

Then double click preset in list or click  to call it. Right click preset to modify or delete this preset. Click  to delete preset as well.




6.4 Patrol

After adding two or more presets for one channel, you can set a patrol with presets for PTZ.

1st step: select one channel and click **Tours** key to show patrol list.



2nd step: Click  or right click patrol name then select the preset you would like to enter patrol configure menu.



3rd step: Click **Add patrol points** or you can also click preset area to select presets from the list.


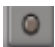


4th step: Set the time and speed for the preset.
Note: Dwell time is between 1 and 128 seconds.
 Dwell speed is between 1 and 40.



5th step: Repeat the 2nd and 3rd step to add the presets to the patrol. Then click **Save** key to save the settings.



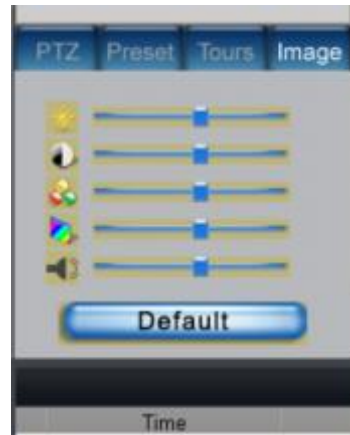
After configuration, you can choose the patrol from the list, and call/stop them by clicking  and  keys.

6.5 Video Parameters Configuration

Click the **Image** key to show the video parameters configuration menu. Move to adjust the video parameters. (Range: 1-10, default value: 6).



Brightness
Contrast
Saturation
Hue
Volume



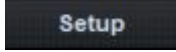

6.6 Keyboard and Joystick Control

Reserved for future use.

7. Recording

7.1 Client Local Recording

7.1.1 Store Setup

Click tab page  →  to enter record setting interface

It can set the record file store partition and the max record file size in the store setup.



HDDs select	<input checked="" type="checkbox"/> Choose saving hard disk of the recorded files
Cycle Record	<input checked="" type="checkbox"/> Each disk space is less than 2G, the earliest recorded files will be overwritten to continue recording. <input type="checkbox"/> When the disk is full, the "Disk Clean" will pop up, after cleaning disk and if the disk space is larger than 2G, the schedule recording will restart.
Record file size	Each record file max size, 32M/64M/128M/256M can be selected

NOTE: Files will be sent to the directory RecordFile on the respective hard drive. See 5.4

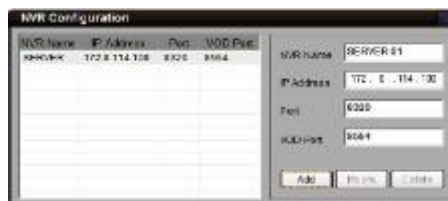
7.2 NVR Storage Server Recording Configuration

User can remotely configure the recording schedule and playback the recorded files of the NVR storage server through client software. Click **NVR Recording Setup** to enter the NVR configuration.

7.2.1 Add NVR Server

Click **NVR Configuration** to enter NVR configuration interface.

Input the NVR server name, IP address and port, and click **ADD** key to finish.



Note: Max 16 NVR servers can be added to this software. The default server port and VOD port are 8320 and 8554.

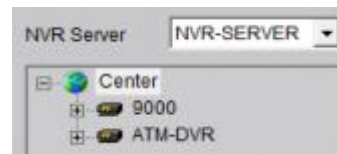
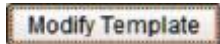
7.2.2 NVR Recording Mode Configuration

After finish adding NVR server, user can set the recording mode for custom setting, using the schedule recording setting.

1st step: Select added NVR servers from

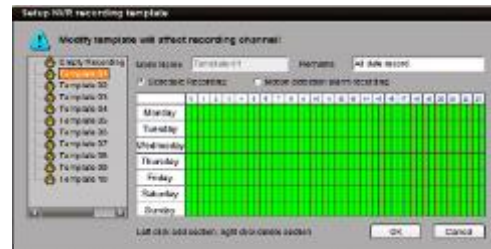


list, click



to enter modify recording schedule.

2nd step: Select the record template, set the recording period for the mode. Click the mouse to add recording schedule; right click to cancel recording schedule.



Recording type includes **Schedule Recording** & **Motion Detection Recording**. Then use left click to add section, right click to delete section in the date area.



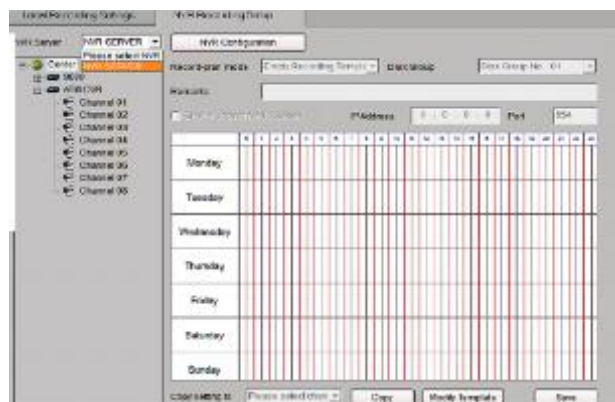
3rd step: click **OK** to finish modifying the template.

Note: The unit of recording mode is in half an hour blocks. Green means schedule recording, pink means motion detection recording and white means no recording.

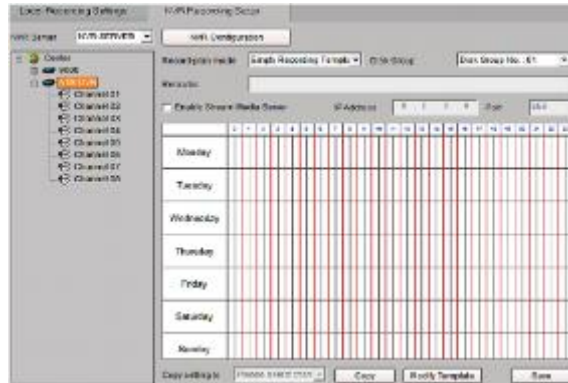
7.2.3 NVR Recording Schedule Configuration

NVR server realises the record unified-storage and can be set through this software.

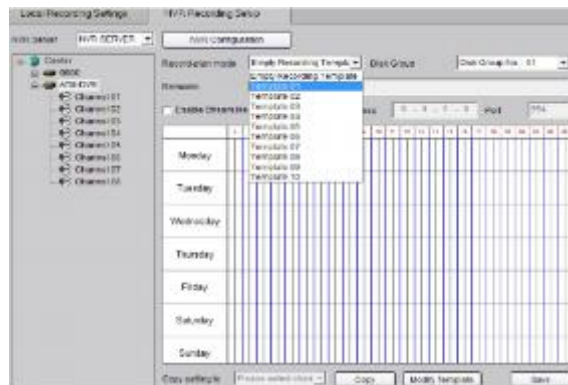
1st step: Select the NVR server from the NVR pull-down menu.



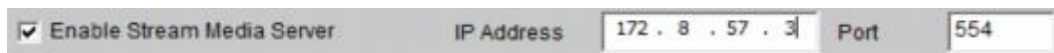
2nd step: Select the device or channel for recording. If device selected, it will be effective to all the channels of the device.



3rd step: Configure the recording schedule. Select the mode from **Recording plan mode** and select the disk group to save the recorded files.

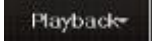


If necessary, enable stream media server and input the IP address and port.



Click **Save** to finish the NVR server schedule recording configuration.

8. Playback

There are 3 options for playback, one is **Remote VOD**, the second is **Local Playback** and the third is **Event Playback** which can be chosen by clicking the  key.

Remote VOD: Searching the recorded files from hard disk of DVR or storage server.

Local Playback: Searching the recorded files from hard disk of PC.

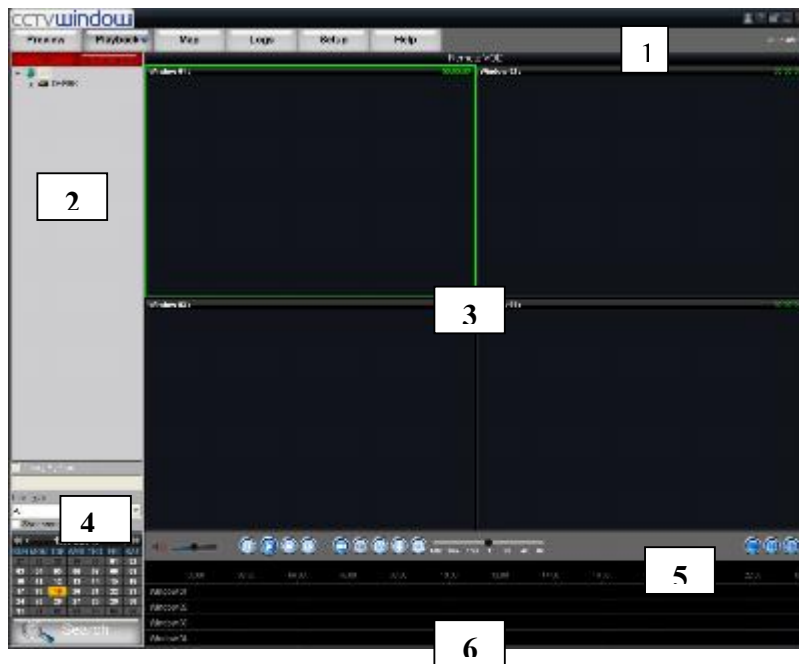
Event Playback: Searching motion detection or alarm recorded files.

8.1 Remote VOD

Click **Playback** and select **Remote VOD** interface.



to enter the playback

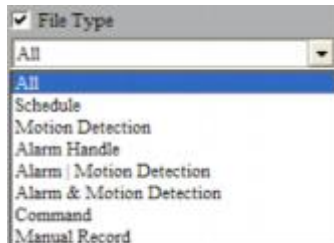


Area	Description	Area	Description
1	System Area	4	Device Area
2	Playback Windows	5	Query Area
3	Play Control Buttons	6	Time Axis Area


8.1.1 Remote VOD Query

1st step: Select the playback channel and window.


2nd step: Select recorded file type and query time.

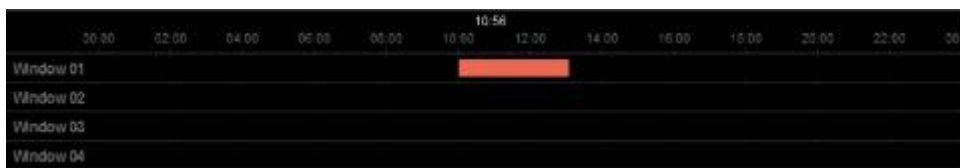


3rd step: Add information of card number. For ATM DVR enable **Query by Card No.** and input the overlaid card number to search. **Optional facility.**

4th step: Click  key to search the matched recorded files, if there are, they will show in the time axis area.



5th step: Click  key to start playback. You can choose time by dragging mouse to the time you want on the time axis.



Select one channel then drag into playback window. If there is recorded file on this day, it will playback from the very beginning of this day.

If you enable synchronous playback, then the 4 windows will playback synchronously. If the start time of the 4 windows is not same, the most advanced window will wait for the other windows until they reach the same time.

8.1.2 Playback Control

When playback has succeeded, the play window will show as below:



Descriptions on playback buttons:

Button	Description	Button	Description
	Open/Close Sound		Capture
	Pause		Video Clip
	Play		Download
	Stop		Single window
	Play by single frame		4 Screen Division
	Stop All		Full Screen
Play Speed Adjust Bar			

Note:

In the single frame playback mode, every time you click the button, the recorded files will play forward by one frame.


Only one window audio can be opened at the same time when in VOD mode. If the audio of next window opens then the audio of previous window will be closed.

Record file Clip

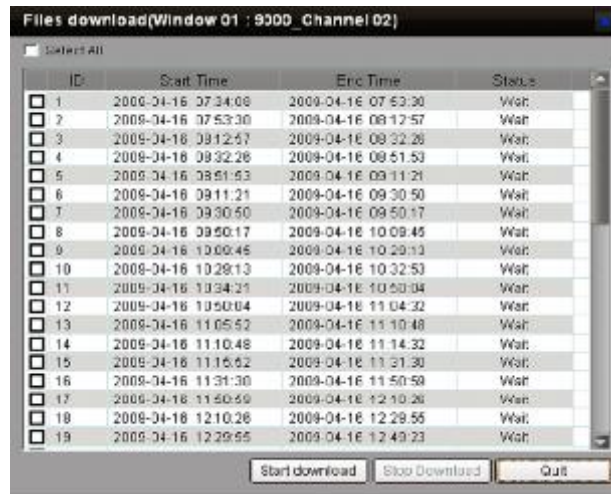
During playback, click once to set begin time of video clip, click it again to set end time of video clip. After saving the video clip, a message will be raised, click it to open video segment.



Record file download

After searching the recorded file, you can click  to download file to local PC.

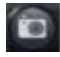
You may click on message to open the downloaded saved directory.



You may go to **Configure** → **Local Settings** → **Path configuration** to change the saving directory.




Playback capture



User can also get the remote capture by clicking  button, and you will see the pop up message. Click the picture to open the capture and click the path to open the capture folder.




Digital Zoom

Click  to trigger the digital zoom function.

In the digital zoom mode, the playback window will display the video as PIP, with the main window displaying the zoomed in part.

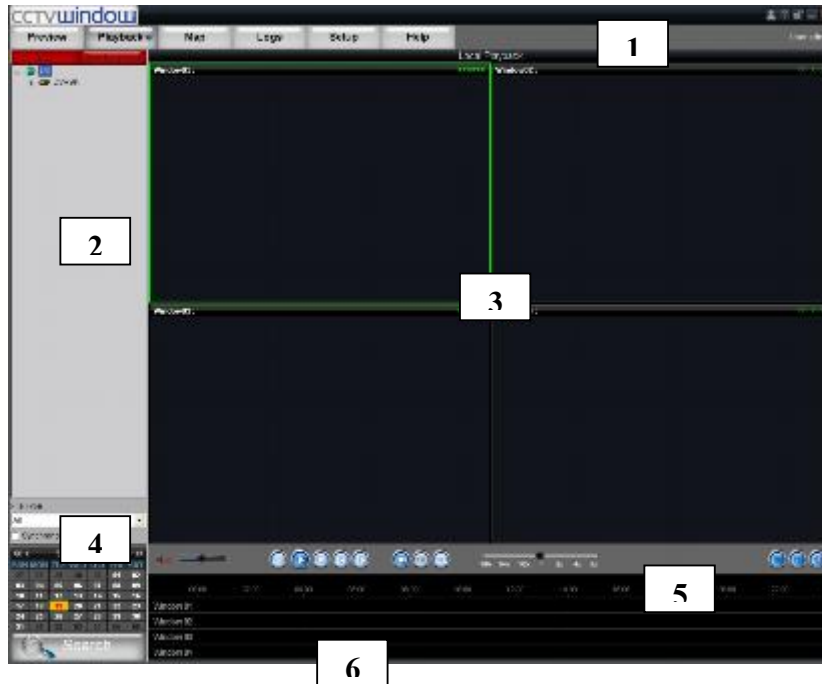
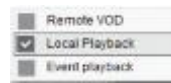
Move the area on the right, click  or 

to change the zoom ratio. Drag the red frame and the zoom area will move with it. Roll the mouse and user can change the zoom ratio. Click the  button again to close the digital zoom.



8.2 Local Playback

Click **Playback** and choose **Local Playback** to enter the playback interface.

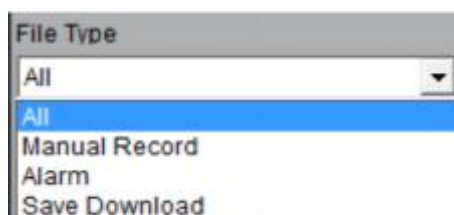



Area	Description	Area	Description
1	System Area	4	Device Area
2	Playback Windows	5	Query Device
3	Play Control Buttons	6	Time Line Area

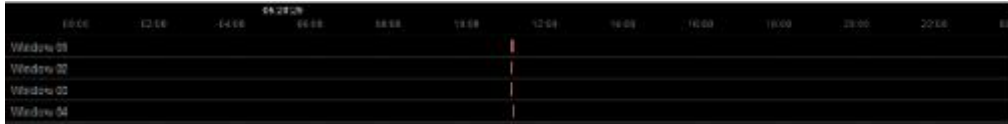
8.2.1 Local Playback Query

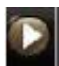
1st step: Select the playback channel and window.

2nd step: Select recorded files type and query time.

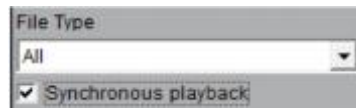


3rd step: Click  key to search the matched recorded files, if there are, then they will be shown in the time axis area.



4th step: Click  key to start playback. You can choose time by dragging mouse to the time you want on the time axis.

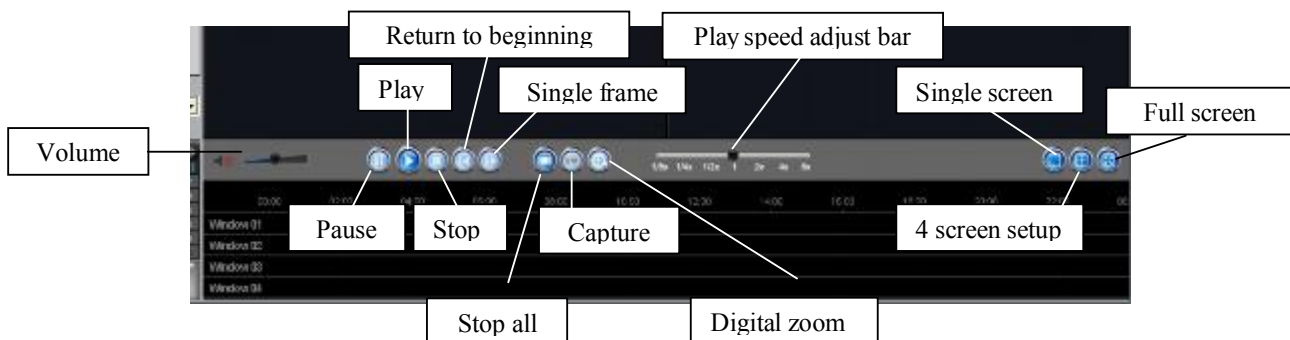
Select one channel then drag into playback window. If there is recorded file in this day, software will play it back from the very beginning of the day.




Note: If selected Synchronous playback then 4 windows will playback synchronously. If they are on different time scales currently, the others will move to the same time scale in the selected window.

8.2.2 Playback Control

The following playback controls are detailed below:



Note: In the single frame playback mode, every time you click  button, the recorded files will play forward by one frame. Only one window audio can be opened at the same time when in VOD mode. If the audio of next window opens then the audio of previous window will be closed.

8.3 Event Playback



Click the **Playback** button, select **Event playback** in the event playback interface.

By event playback function, user can search record of motion detection or sensor alarm. If the matched record exists it will be displayed in the interface. User can select and play back from it.

Note: Event playback function is supported by DVR9K series DVR, with firmware version 1.1 or higher.

8.3.1 Record search

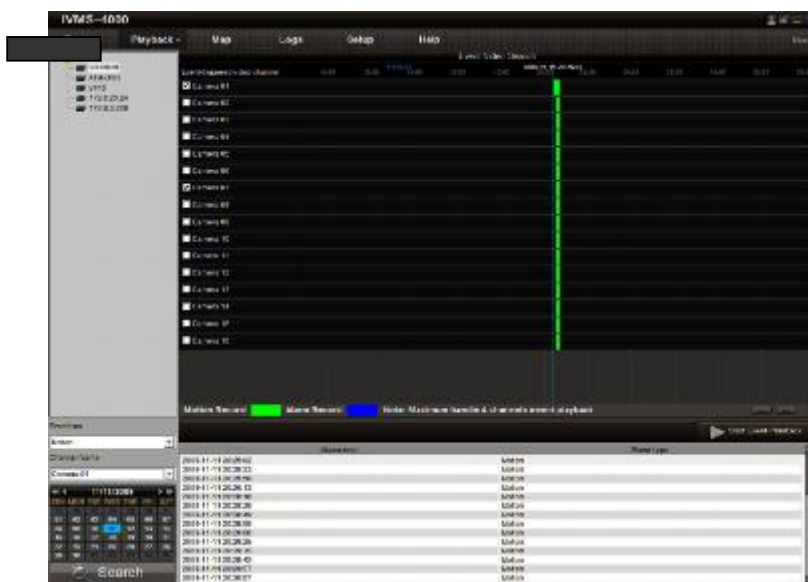
1st step: Select a device.

2nd step: Select the event type, camera channel/alarm channel and the event date.



3rd step: Click **Search** to search record file, if there are record files that match the options, they will be displayed on the time line.

4th step: Select the channels to be played back. Move the mouse and select a time point, then click **Start Event Playback** and selected channels will play back.



Note: Maximum 4 channels event playback.

8.3.2 Playback control

Event playback interface as shown below:



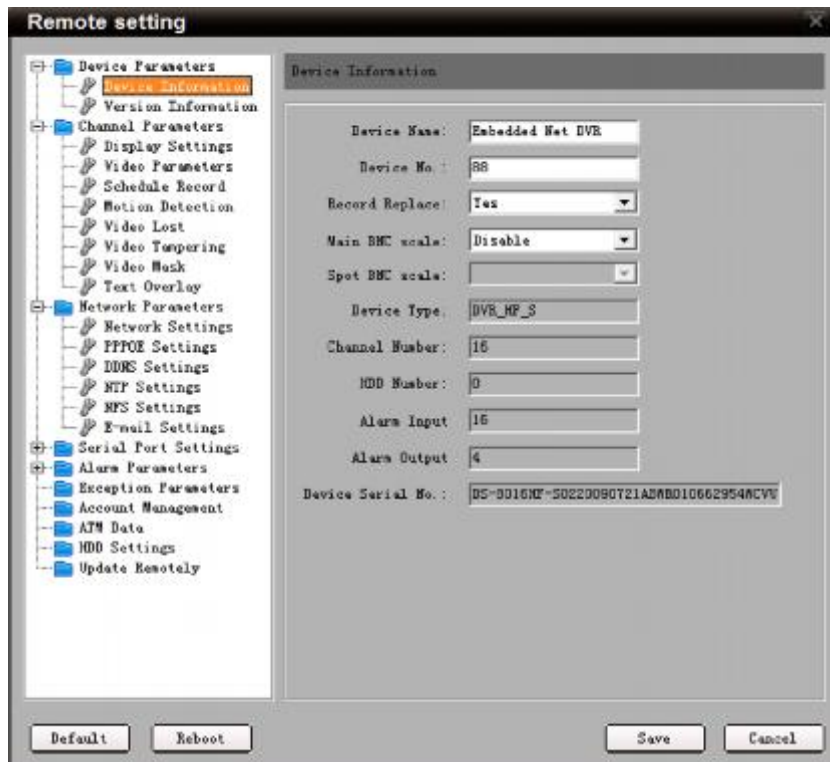
Button	Description	Button	Description
	Open/close sound		Video clip
	Pause		Download record
	Play		1 window division
	Stop all		4 window divisions
	Capture		Return to search
		Play Speed Adjust Bar	

The software only can only open one stream of audio at the same time. If the audio on the next window is opened then the audio on the original channel will be closed automatically.


9. Remote Configuration

You can remotely configure the parameters of this device, including recording schedule, alarm schedule etc.

Click:  →  → Right click the device and select Remote Configuration.





If the device is DVR9K series, after clicking the **Remote Configuration** you need to

click  key in the display menu and enter the configuration interface.

9.1 Remote Recording Configuration

9.1.1 Encoding Parameters Configuration

Select  Channel Parameters →  Video Parameters



to enter encoding parameters configuration interface.

Note: If the device is DVR9K series, click **Switch to IP Channel** and select IP channel to configure the parameters of IP camera.



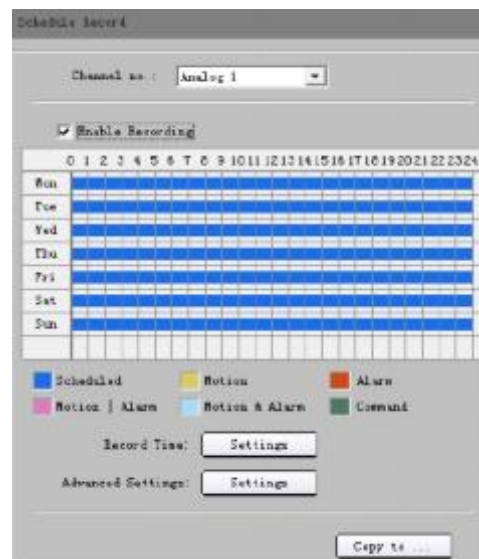
Parameters	Description
Encoding Parameters	Main/Sub stream and Event Parameters
Stream Type	Video & Audio or Video stream
Resolution	Recording Resolution
Video Quality	Highest, Higher, High, Average, Lower, Lowest
Bit rate Type	Variable and Constant
Max Bit rate	Maximum bit rate of the compressed stream
Frame Rate	Record frame rate from 1/16 to full frame rate (25fps)
Frame Type	BBP, BP and Single P frame
I frame Interval	The interval between two I frames

9.1.2 Schedule Recording

Select  Channel Parameters →  Schedule Recording

to enter configuration interface.

Tick the Enable Recording box.



Click **Settings** in the **Record Time** box to enter recording schedule configuration interface.

Click on **Weekday** box and select day of the week or the whole week for recording time.

Click **Schedule Recording** for the recording type. The **All Day Recording** or up to 8 periods can be selected as well.

Note: The time of each period must run consecutively and must not overlap.



Click the **Settings** box next to the **Advanced Settings** in the Schedule Record menu. User can set pre/post record time.

Note: Recording Expired, Redundant and Audio Record are only available for the DVR9K series DVR.



Parameters	Description
Duration	Storage life of recorded files in redundant disk, expired data will be deleted
Redundant	Redundant for this channel or not (When redundant disk is available)
Audio Record	Recorded files include audio or not

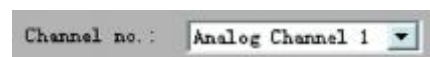
9.1.3 Motion Detection Recording

Click **Motion Detection** to enter motion detection recording interface.

Note: If DVR9K series, click **Switch to IP Channel** and select IP channel to configure the parameters IP camera.

1st step: Select channel number for motion detection.

2nd step: Enable motion detection to activate **Setting Area**, **Arm Schedule** and **Linkage** settings.



3rd step: Set the motion detection area and sensitivity. Sensitivity 1 is lowest and 6 is highest sensitivity level. Enable **Start Draw** and select the detection area by using the mouse.



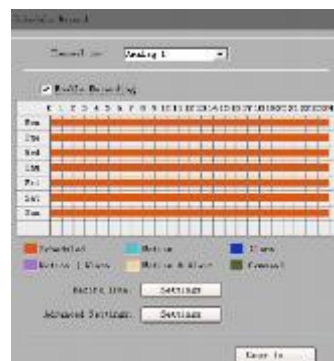
4th step: Set the detection time. **Arm Schedule** can be for one day or for the whole week and up to 8 periods for one 24 hour day.



5th step: Set the **Trigger Recording** for linkage. Click **Setting** in the linkage area and select **Trigger Recording** tab.



6th step: Select  **Channel Parameters** →  **Schedule Recording** and tick Enable Recording.



7th step: Set the detection recording time.
Click **Record Time** Settings box.
Select **Weekday** day of the week or the whole week for recording time.



Click  for the recording type and change it to .

The **All Day Recording** or 8 periods can be selected as well.

Note: The time of each period must be consecutive And must not overlap. The valid time is the intersection of the motion detection time and motion detection recording time.



9.1.4 Alarm Recording

Select  **Alarm Parameters** → .

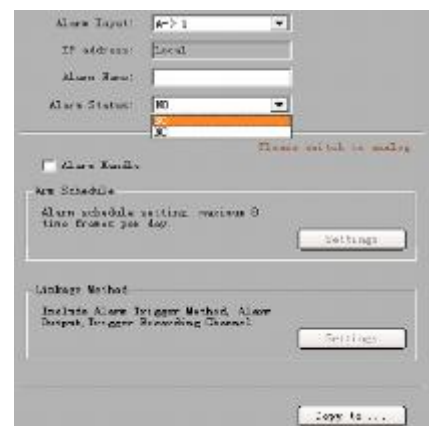
1st step: Select alarm input.

Note: If the device is DVR9K series, you can click **Switch to IP channel** to configure the IP channel alarm input.



2nd step: Select the type of alarm input, NO or NC.

Note: The settings will become effective after rebooting.



3rd step: Enable **Alarm Handle** to activate **Arm Schedule & Linkage Method**.



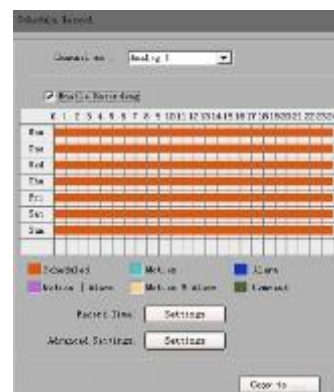
4th step: Set the arm schedule for alarm input. Click **Settings** in **Arm Schedule** menu. Select a day of the week in **Weekday** or the whole week for recording time. The **All Day Record** or 8 periods within a 24 hour day can be selected as well. **Note:** The time of each period must be consecutive and must not overlap.



5th step: Set recording channel triggered by alarm. Click **Settings** in **Linkage** menu and then select **Trigger Recording** tab. Enable the recording channels you want.



6th step: Enter schedule recording interface. Click **Enable Recording** to enable Recording.



7th step: Set the recording time for alarm input. Click **Settings** in **Record Time**.

Select a day of the week in Weekday or the whole week for recording time. Set the record type to Alarm Recording. The **All Day Recording** or 8 periods can be selected as well.

Note: The time of each period must be consecutive And must not overlap.



9.1.5 Other Recording Modes

Other Recording Modes include **Motion detection & Alarm**, **Motion detection | Alarm**. **&** means recording is triggered when two situations happened together, and **|** means recording is triggered when one of the situations happen.

The configurations are the same with Motion detection recording or Alarm recording.

9.2 Alarm

You can configure motion detection alarm, signal level alarm, video loss alarm and other alarm and linkage through client software.

9.2.1 Motion Detection Alarm

1st step: Select channel number for motion detection.



2nd step: Enable motion detection to activate **Setting Area**, **Arm Schedule** and **Linkage** settings.



3rd step: Set the motion detection area and sensitivity. The sensitivity 1 is lowest and 6 is the highest level. Enable **Start Draw** and select the detection area by using mouse.



4th step: Set the detection time.
Arm Schedule can be one day or the whole week and up to 8 periods in one day.



5th step: Set the alarm linkage for motion detection and select alarm output channel.



Alarm Linkage Description:

Linkage	Description
Warning on Monitor	When the alarm signal is detected, the image of corresponding channel will pop out as single screen.
Audio Warning	Alarm triggers buzzer
Upload to Center	Upload the alarm signal to the center, such as client software
E-mail Linkage	When the alarm signal is detected, the client software will send the email to the designated mailbox.
Trigger Alarm Output	Trigger alarm output of the device; if the device is DVR9K series, triggering alarm output of IP channel can be selected as well.

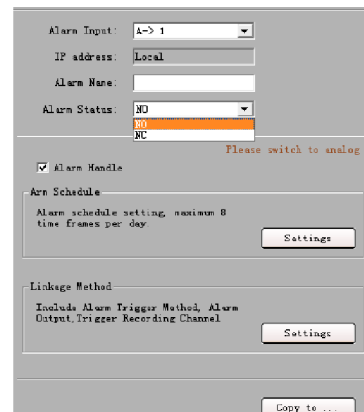
9.2.2 Signal Level Alarm

Select Alarm Parameters → Alarm Input Setting

1st step: Select alarm input.
Note: If the device is DVR9K series DVR click **Switch to IP channel** to configure the IP channel alarm input.



2nd step: Select the type of alarm input, **NO** or **NC**
 (NO = normally open NC = normally closed).
Note: The settings become effective after rebooting.



3rd step: Enable **Alarm Handle** to activate **Arm Schedule & Linkage Method**.



4th step: Set the arm schedule time for alarm input. Click **Settings** in **Arm Schedule** menu. Select day of the week or the whole week for recording time. The **All Day Record** or 8 periods can be selected as well.

Note: The time of each period must be consecutive and must not overlap.



5th step: Set the alarm linkage for signal level and select alarm output channel.



6th step: Set Trigger Recording for signal level alarm.



7th step: Set PTZ linkage for signal level alarm.

Note: Alarm input can link several PTZ channels, but one channel can only link one option of preset, sequence and pattern.



9.2.3 Video Loss

If the video input signal is lost, user can set relevant linkage operation.

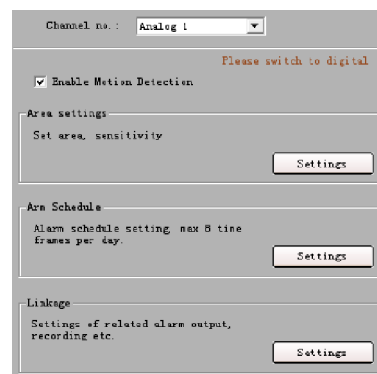
1st step: Select the channel number for video loss.

Select Channel Parameters →

Note: If the device is DVR9K series click on **Switch to digital channel** to configure the video loss on IP channel.



2nd step: Enable **Video Loss** to activate settings in **Arm Schedule** and **Linkage**.



3rd step: Set the arm schedule for video loss. Click **Settings** in **Arm Schedule** menu. Select day of the week or the whole week for the arm schedule. The **All Day Record** or 8 periods can be selected as well.

Note: The time of each period must be consecutive and must not overlap.




4th step: Set linkage for video loss. Click **Settings** in the **Linkage** menu.



9.2.4 Video Tampering

1st step: Select the channel number for video tampering.

Select  Channel Parameters →  Video Tampering

Note: If the device is DVR9K series you can click **Switch to digital channel** to configure the video tampering of IP channel.



2nd step: Enable **Video Tampering Alarm** to activate settings of **Setting Areas**, **Arm schedule** and **Linkage**.



3rd step: Set the video tampering area and sensitivity.

The sensitivity can be divided into three levels: Low, Medium, and High.

Enable **Start Draw** and select the detection area by using mouse.



4th step: Set the arm schedule for video tampering. Click **Settings** in **Arm schedule** menu.

Select day of the week or the whole week for the arm schedule. The **All Day Record** or 8 periods can also be selected.

Note: The time of each period must be consecutive and must not overlap.



5th step: Set linkage for video tampering. Click **Settings** in the **Linkage** menu.



9.2.5 Exceptions

Exception parameters are used for alarming an abnormal event. These include HDD Full, HDD Fault (HDD errors or HDD not initialising), Network Broken, IP Address Conflict, Illegal Access (user name or password wrong), Video Output Standard Mismatch and Video Signal Exception (video signal unstable).

Select the exception type and handle method.

Select  **Exception Parameters**

to enter configuration interface.

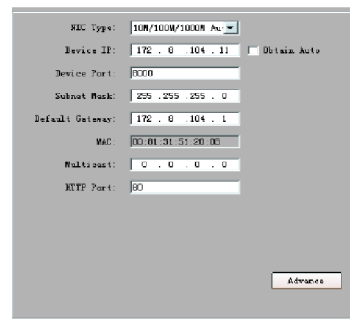


9.3 Network Configuration

9.3.1 Basic Configuration

Select  **Network Parameters** →  **Network Setting**

Configure the network according to the actual situation. If there is a DHCP server in the network, enable **Obtain Auto** and reboot the device to get the IP address automatically.



Select **Advance** to enter advanced configuration. You can configure preferred DNS server1 and spare DNS server2, IP address of alarm host and IP server.



Parameters	Description
DNS1 DNS2	Preferred and spare DNS server
Alarm Host	Alarm signal can be uploaded to the IP address automatically
IP Server	IP address of IP server

9.3.2 PPPoE



This protocol is primarily used in the USA and is not available in the UK which uses PPPoA. This option is therefore not supported.

9.3.3 DDNS

This option applies to equipment used in the USA that does not use ADSL. This option is therefore not supported.

9.3.4 NTP

Adopting the NTP function can enable this software to synchronise the time and date of the device on a regular time interval.

Select  Network Parameters →  NTP Settings

Tick to enable NTP function.

Note: The time synchronisation interval is 0~10080 minutes with a default of 60mins. If the device is connected to the public network, the IP address of NTP server provided by supplier of service can be input in the blank **Server Address** box.





9.3.5 NFS

The NFS option allows recorded data to be saved to a network storage device provided by a NAS server. This equipment is not available so this function is not supported.

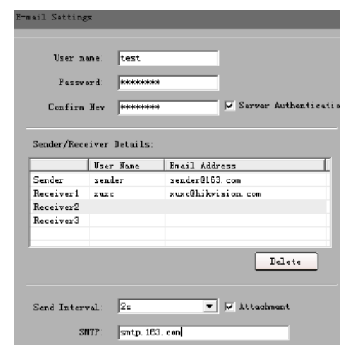
9.3.6 E-Mail

Through E-mail configuration, Email can be sent to the designated mailbox when there is an alarm. **Note that the Email function is currently only available on the Alien Pro models Alien504, Alien508 and Alien516.**

Select  Network Parameters →  E-mail Settings

If server authentication is needed, tick authentication box and input user name and password. Input the sender and recipient information and if there is a need to send a picture then tick **Attachment** box.

Note: Make sure that the device supports email function and that server allocates the storage space correctly.



9.4 Channel Configuration

9.4.1 Channel Display Settings

Select  Channel Parameters →  Display Setting

You can configure channel name, OSD and related parameters here.



9.4.2 Video Mask

1st step: Select channel number and tick **Enable Video Mask**.

Select  Channel Parameters →  Video Mask

Note: If the device is DVR9K series, click **Switch to digital** to choose IP channel and configure the parameters.

2nd step: Set the mask area.
Click **Settings** to enter area set menu.
Tick **Start Draw** and select the mask area by clicking and dragging the mouse.



9.4.3 Text Overlay

You can add characters on the screen for a channel.

Select  Channel Parameters →  Text Overlay

Tick **Strings 1** to enable text overlay then double click the strings area to input the characters you want to overlay on the screen.

Note: If the device is a DVR9K, then only analogue channels support text overlay.



9.5 Account Management

9.5.1 General User and Password control methods

There are **three** methods of controlling users and passwords.

- Directly via the device
- Via the Client using Remote Configuration
- Via the Client using User Management

a. Directly via the device

The first method is by setting users and passwords direct in the device and not by the software. This is explained in the device hardware manual.

b. Via the Client using Remote Configuration

The second method which is described in this section of this manual, is to enter the remote configuration menu in this client software and this make changes to the accounts stored in the device itself.

c. Via the Client using User Management

The third method is described in section 12.3 under User Management. This allows user and password control within the client software only, and takes priority over the device setup. Note that these changes apply to this installation of the client software and do not change the settings in the actual device. ***This method must be used with care.***

9.5.2 Via the Client using Remote Configuration

The default user name and password of device administrator are “admin” and “12345”. Administrator can remotely add, delete users or distribute authority for users. The new added users are divided into two levels: user and operator. (For “Remote Configuration” privilege, operator has “Voice Talk” rights, but user does not; for “Channel Configuration” privilege, operator has all the rights, but user has local playback and remote playback rights.)

Select  Account Management



Click **Add** to add user.

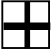

Note: If you set the IP address or physical address, then only the PC with the same IP address or physical address can access the device over the network.



Click **Modify** to change the user name and password; click **Delete** to delete the user.

Allow ticked means privilege granted, unticked means privilege not granted. If the privileges are related to channels, then a ticked status means granting the privileges for all channels; unticked status means granting no privileges for all channels.




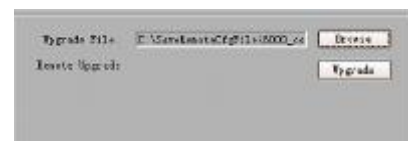
Click  to expand the channels, and set the privilege for each channel. If only some channels have operating privileges, the status will be .

Note: Please refer to the user manual of the device for the detailed descriptions on privileges.

9.6 Others

Remote Upgrade:


Click  **Update Remotely**



Click “Browse” to search the local upgrade file, click “Upgrade” to start upgrade remotely.

Note: Using an incorrect BIOS version can damage the DVR. Do not attempt any upgrade unless this is confirmed by your installer or supplier.

HDD Format:

Click  HDD Format

Note: Please backup the data before formatting the hard drive.

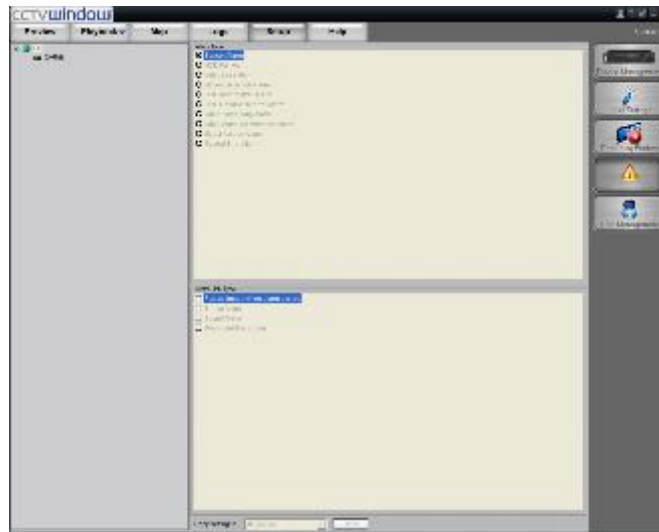


10. Alarm Linkage


According to the various alarm signals uploaded from the device, this software can configure the different linkages for them.

10.1 Linkage Configuration


Path:  → 

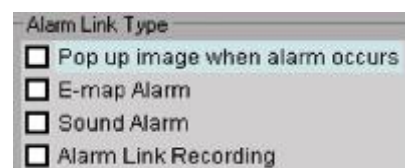


1st step: Select the device from the device area on the left, activate the alarm type and alarm linkage type options.

2nd step: Select the alarm type, after selected, the alarm type status will become 



3rd step: Select the alarm linkage type for the alarm type, and status  means selected.



Description of Alarm Linkage Types

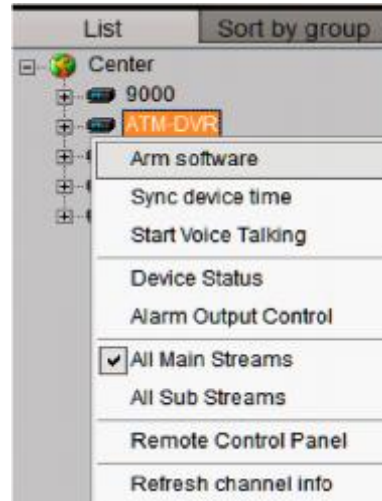
Linkage Types	Descriptions
Display image when alarm occurs	Display single screen image when alarm occurs
E-map Alarm	When alarm occurs, related hotspot on E-map flashes
Sound Alarm	Alarm triggers local alarm sound
Alarm Link Recording	Alarm triggers local recording of alarm channel

Note: Before setting alarm linkage configuration, the alarm schedule and handle method of the device are required to be set correctly.

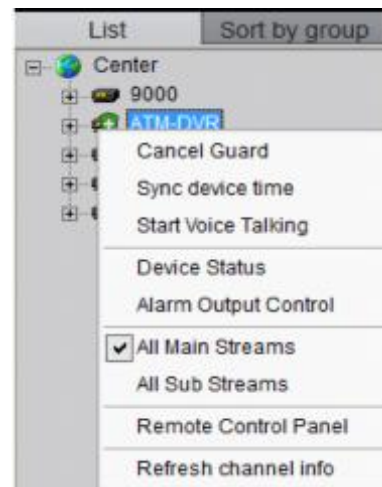
10.2 On Arm & Off Arm

You can choose “Arm software” and “Cancel Guard” to decide whether to handle alarm signal or not.

Right click the device name in the preview mode and select **Arm software** to enable the monitoring of device alarm and the device icon will be shown as



If the device is on guard, right click the device name. You can select **Cancel Guard** to cancel alarm monitoring.

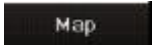


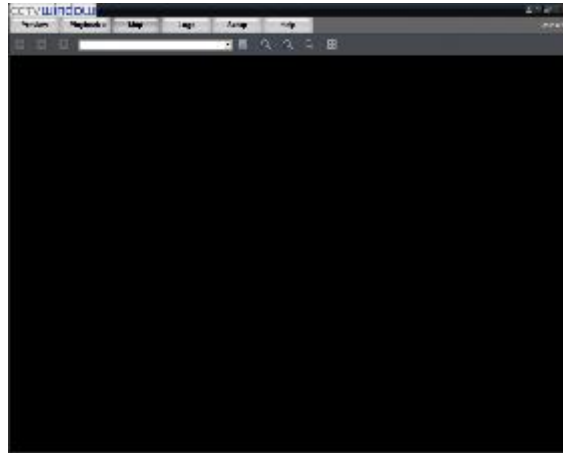
Right click the area name, select **Arm All** or **Disarm All** for all the devices.










After the device or the area fortified, the alarm linkage will become effective when there is an alarm detected.

11. E-Map

Click  key to show the E-map window.




Toolbar Buttons Descriptions:

Buttons	Descriptions	Buttons	Descriptions
	Enable/Disable Map Edit		Enter/Exit Full Screen
	Zoom Out		Previous Page
	Zoom In		Next Page
	Zoom Adjustment		Upper Level

11.1 Add Map

1st step: Click  button to enter map edit mode, the cursor will change to 

2nd step: Right click the black area and select **Add Map** (or click  right click the area and select **Add Map**), then the add map window will display.

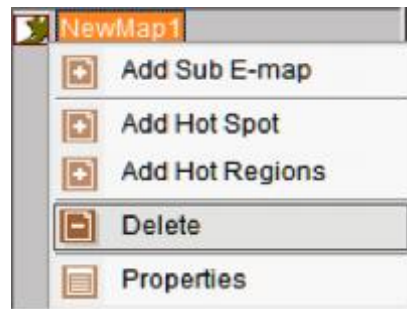
3rd step: Add the map.

Click **Browse** to search the image file on the local PC. Click **OK** after renaming the file to finish.

Note: Supported file formats are BMP & JPEG.



4th step: Add sub map, right click the image name in the map info area or the image itself, and the sub menu will display.



Select **Add Sub E-map** to add sub map.

Select **Properties** to change the map name and image file.

Select **Delete** to delete the selected map.

11.2 Map Configuration

Map configurations need to be done under the map edit mode.

11.2.1 Hot Spot


Through hot spot configuration, user can mark out the location and live view of the monitoring points on the E-map.

Add Hot Spot

1st step: Enter add hot spot interface.

Right click the image name in the map info area or the image itself, and select **Add Hot Spot**.




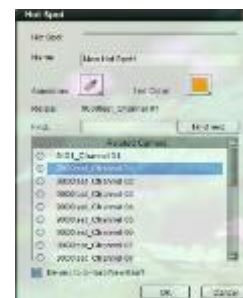
2nd step: Input the name of hot spot, click  and select the icon for hot spot.

You can also click  to change the colour of characters.

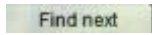


3rd step: Select the channel you want to relate to in the **Related Camera list** and press “OK” to finish.

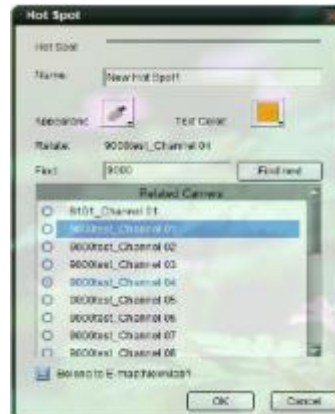
After adding hot spot, move the mouse to the hot spot icon Which will change to  and you can move the hot spot by pressing left button and dragging.



Input the key words in the **Find** box. Click



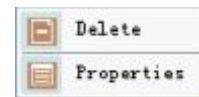
to find the channel whose name embraces the key words.



If the alarm links to E-map is set as alarm handling method, in the non-edit mode the hot spot will flash when there is an alarm on a triggered channel. Double click the hot spot and the live image of the related channel will display.

Edit Hot Spot

In the edit mode, right click the hot spot and the edit menu will display.



Select **Delete** to delete the hot spot; select **Properties** to change the name, appearance and related monitoring point of the hot spot.


11.2.2 Hot Region


Hot region configuration can be used for displaying the sub map in the main map.

Add Hot Region

1st step: Enter hot region adding interface. Right click the image name in the map info area or the image itself, and select **Add Hot Regions**.




2nd step: Input the name of the hot region, click  button to select icon for hot region.

You can also click  to change the colour of the characters.



3rd step: Select the map from the **Related E-map** list, and press **OK** to finish.

After adding hot region, move the mouse to the hot region icon and it will change to  and you can move the hot region by pressing left button and dragging.

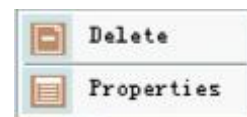


After hot region is correlated to the map, double click the hot region icon in the non-edit mode will show the related map.

Note: You cannot edit map unless in the edit mode.

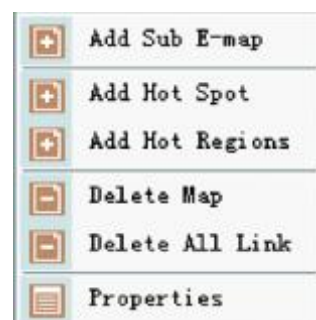
Edit Hot Region

In the edit mode right click the hot region icon and the edit menu will display.



Select **Delete** to delete the hot region; select **Properties** to change the name, appearance and related map of the hot region.

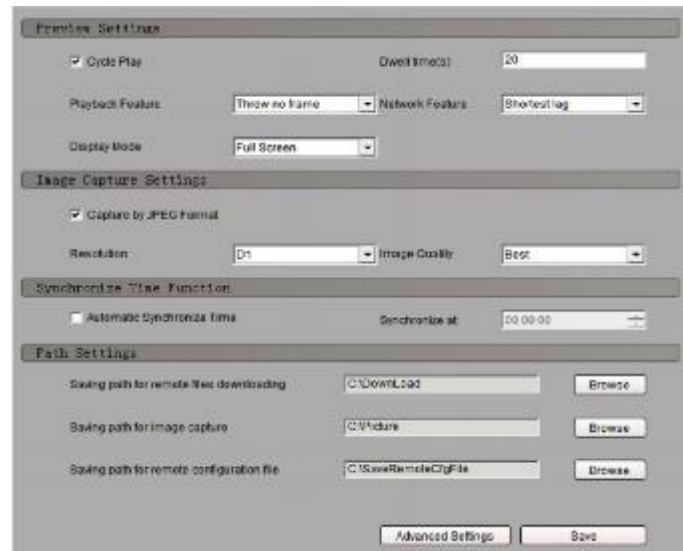
Right click the map in the edit mode, select **Delete All Link** to delete the all hot spot and region of the map.



12. Utilities

12.1 Software Configuration

Click



Descriptions on Software Configuration

Software Configuration	Descriptions	Descriptions
Preview Settings	Cycle Play	<input checked="" type="checkbox"/> means enable it
	Dwell Time	Set the time of cycle play
	Playback Feature	Configure the playback performance, whether to drop B frame
	Network Feature	Set the instantaneity and fluency for preview
Image Capture Settings	Display Mode	Set the display ratio of preview window
	Capture Image by JPEG Format	<input checked="" type="checkbox"/> means JPEG format <input type="checkbox"/> means BMP format
	Image resolution and quality can be configured	
Synchronization Function	Auto Synchronize	<input checked="" type="checkbox"/> means enable it, and user can set the time for synchronization
Path Configuration	Remote Download Path	Set the path for remote downloading recorded files
	Capture Saving Path	The saving path of captures from preview or playback
	Configuration File Saving Path	The saving path for exporting the configuration file

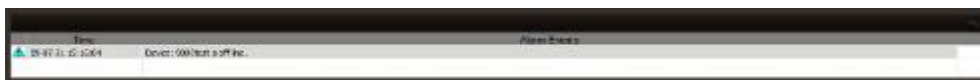
Click **Advanced Configuration** to enter alarm configuration, log maintenance and other configurations.



Descriptions on Advanced Configuration:

Advanced Configuration	Descriptions	Descriptions
Alarm Settings	Alarm Use Sound Card	<input checked="" type="checkbox"/> means audible alarm outputs from sound card
	Alarm Duration	Set the time length of the alarm delay
Log Maintenance	Alarm Log expired Time	The retention period of the alarm log in the database
	Operation Log expired Time	The retention period of the operation log in the database
	System Log expired Time	The retention period of the system log in the database
Other Configuration	Show error message	Pop up the warning dialog box when error occurs
	Playback on second monitor	Select two screen display for e-map or remote playback
	On line status Inspection	<input checked="" type="checkbox"/> means start to inspect the status of the current devices
	Auto Login	<input checked="" type="checkbox"/> means enable it
	COM for	Serial port number

After enabling inspection, if the device is off-line, then the alarm light will flash and the detailed information will be listed; if the device is on-line, the alarm light stops flashing and on-line information will be listed as well.

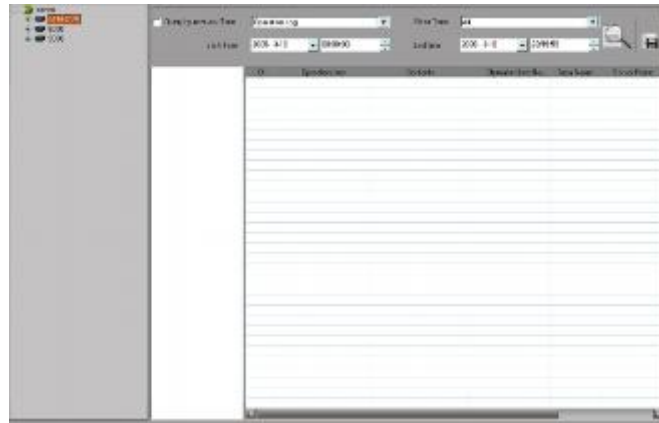


12.2 Log Management

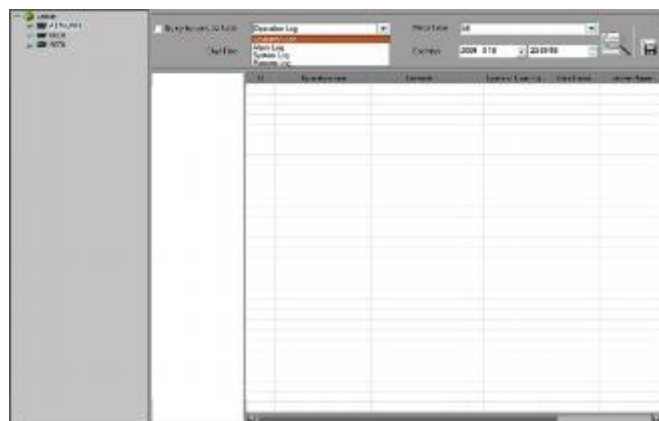
Click  to enter the management interface.

12.2.1 Log Query

1st step: Select the area, device or channel you want to search from.



2nd step: Select type and subtype for the log you want to search for.



System Log: Record information on login, logout and software configuration.

Operation Log: Record information on the software operation.

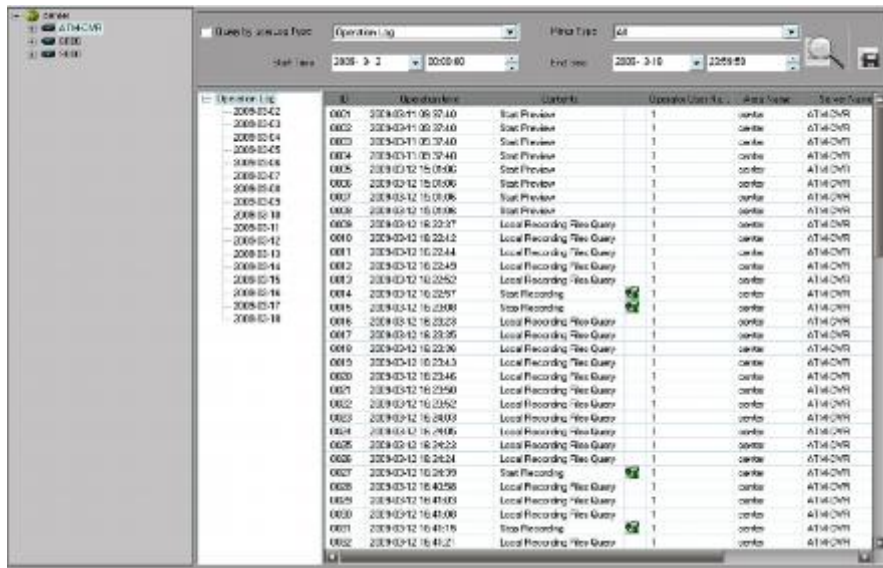
Alarm Log: Record information on the alarm which must be linked as alarm link type.

Remote Log: Record information on operations of the remote device.

3rd step: Select the start time and end time for the log query, click



button and the log match condition will show in the list.



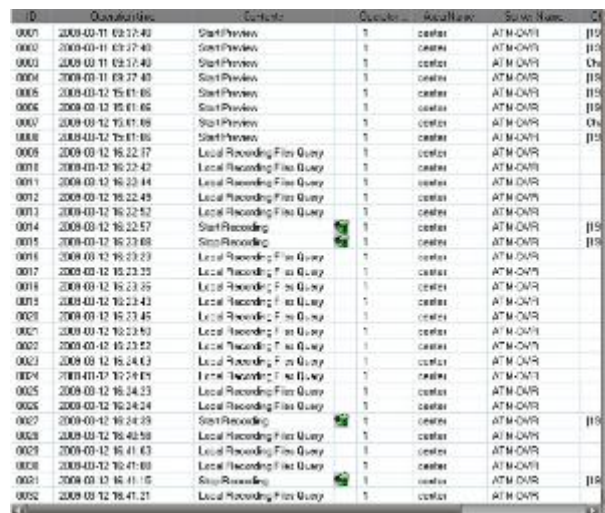
Double click the date in the list and the logs of that day will show in the information list.


Enable **QUERY by user** (i.e.) you can search log by users.

Note: Up to 2000 logs can be displayed at a time.


12.2.2 Playback Linked Recordings

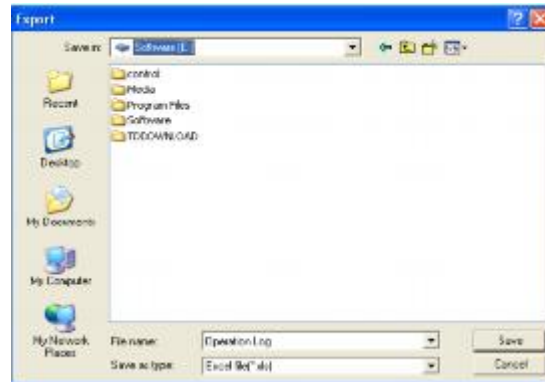
If the logs contain linked recordings, then you can play them back.



Click icon  in the list to playback the linked recordings.

12.2.3 Export Log

Click  button to export current logs as Excel or Txt format.



12.3 User Management

There are **three** methods of controlling users and passwords.

- a. Directly via the device
- b. Via the Client using Remote Configuration
- c. Via the Client using User Management

a. Directly via the device

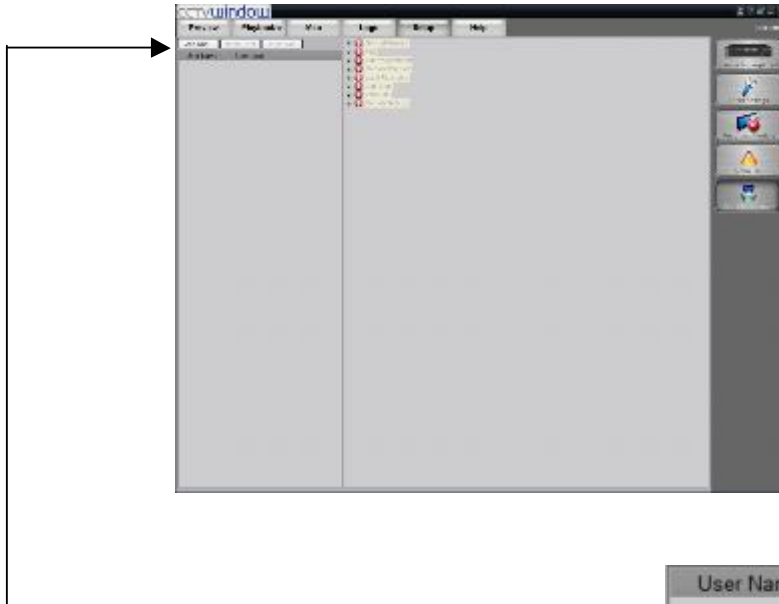
The first method is by setting users and passwords direct in the device and not by the software. This is explained in the device hardware manual.

b. Via the Client using Remote Configuration

The second method is to enter the remote configuration menu in this client software and this make changes to the accounts stored in the device itself.

c. Via the Client using User Management

The third method is described in this section under User Management. This allows user and password control within the client software only, and takes priority over the device setup. Note that these changes only apply to this installation of the client software and do not change the settings in the actual device. Therefore changes are not reflected in another PC loaded with this client software. ***This method must be used with care.***

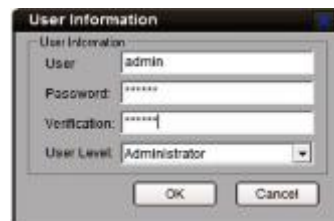


12.3.1 Add & Delete User

Right click the user list on the left, and select **Add User**.

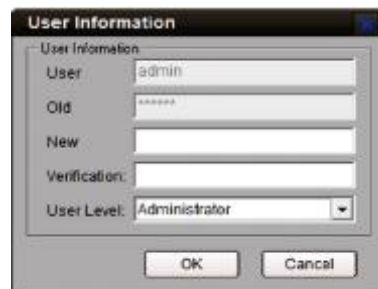


Input the user name, password and select the user level, then click “OK” to finish. There are two options for user level: Administrator and Guest. Administrator has all the rights by default, but Guest, you need to set the rights for it.



Double click the user name or right click it and select **Modify User** to change the password and user level.

Note: The administrator registered when the software ran for the first time can change password and user level; administrator can change user password but guest has no rights on user management.



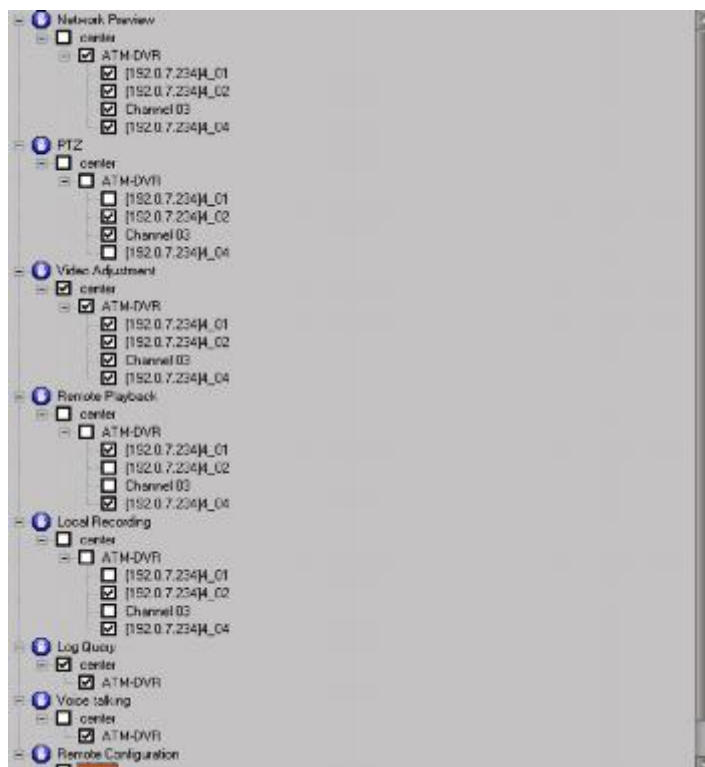
User Privileges Descriptions:

User Type	Privilege	Descriptions
Registered User	Add user	Add administrator and normal user
	Modify user	Modify the levels of all users and privileges of normal users
	Operation Privilege	With all privileges by default, cannot be changed.
Administrator	Add user	Add normal user
	Modify user	Modify the privileges of normal users
	Operation Privilege	With all privileges by default, cannot be changed.
Others	Add user	No privileges
	Modify user	No privileges
	Operation Privilege	No local configuration privileges, needs to set the privileges first.

Note: The administrator can be modified in the login dialog box instead of the user management. The password cannot be null and should be more than 6 characters.

12.3.2 User Rights Distribution

Select a guest, and click the rights tree on the right to distribute the rights for user.



Note: The operations are available for the guest only when the corresponding rights are allocated.