

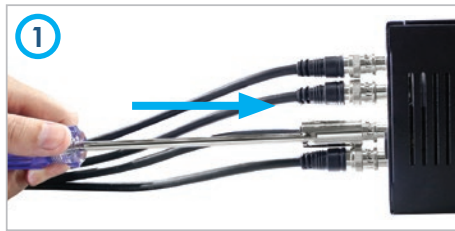


Pre-moulded BNC Leads, Saves On Installation Time!

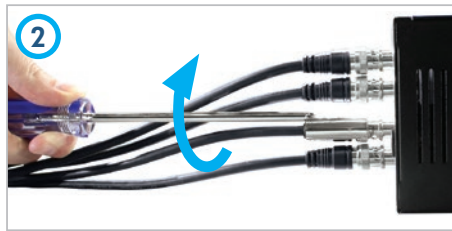
Our high quality BNC leads are great for connecting cameras to a DVR, or DVRs to switchers, quads and monitors. We offer a range of sizes to suit all needs.

Easily remove hard to reach BNCs with the TOO920

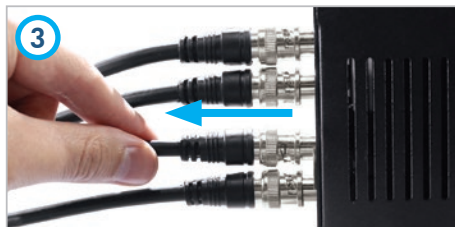
With the TOO920 you can quickly remove hard to reach BNCs. BNC connectors are often quite awkward to remove without removing the surrounding connectors first. BNC connectors on the rear of DVRs or distributors for example, are often tightly packed together giving restricted access to the connector you wish to remove. The TOO920 resolves this problem, enabling you to remove single BNCs as shown in the step by step guide below.



Slide the TOO920 over the BNC connector you wish to remove.



Twist the TOO920 to unlock the BNC.



Grip the BNC lead and pull to remove.



Quick and easy!

For the full guide on removing hard to reach BNCs see online tip 294 ►►►



Features

- Range Of Lengths
- Use For Analogue Or HD-SDI

Specification

FUNCTION	SPECIFICATION
Connections	BNC Plugs
Build	Nickel Plated

Options Available

PART CODE	DESCRIPTION
VID156	0.2m BNC Lead, 10 Pack
VID158	0.5m BNC Lead, 10 Pack
VID161	1.2m BNC Lead
VID162	1.2m BNC Lead, 10 Pack
VID163	2m BNC Lead
VID164	2m BNC Lead, 10 Pack
VID165	5m BNC Lead
VID166	5m BNC Lead, 10 Pack
VID167	10m BNC Lead
VID168	10m BNC Lead, 10 Pack
VID169	20m BNC Lead

Other Products To Consider




BNC With Terminal Strip Adapter
CON380



BNC Removal Tool
TOO920

All specifications are approximate. System Q Ltd reserves the right to change any product specifications or features without notice. Whilst every effort is made to ensure that these instructions are complete and accurate, System Q Ltd cannot be held responsible in any way for any losses, no matter how they arise, from errors or omissions in these instructions, or the performance or non-performance of the equipment that these instructions refer to.

 This symbol on the products and/or accompanying documents means that used electronic equipment must not be mixed with general household waste. For treatment, recovery and recycling please return this unit to your trade supplier or local designated collection point as defined by your local council.

WEE/CG0783SS