

**CCT871 SYSTEM Q TIME & DATE GENERATOR INSTRUCTIONS**

**Features**

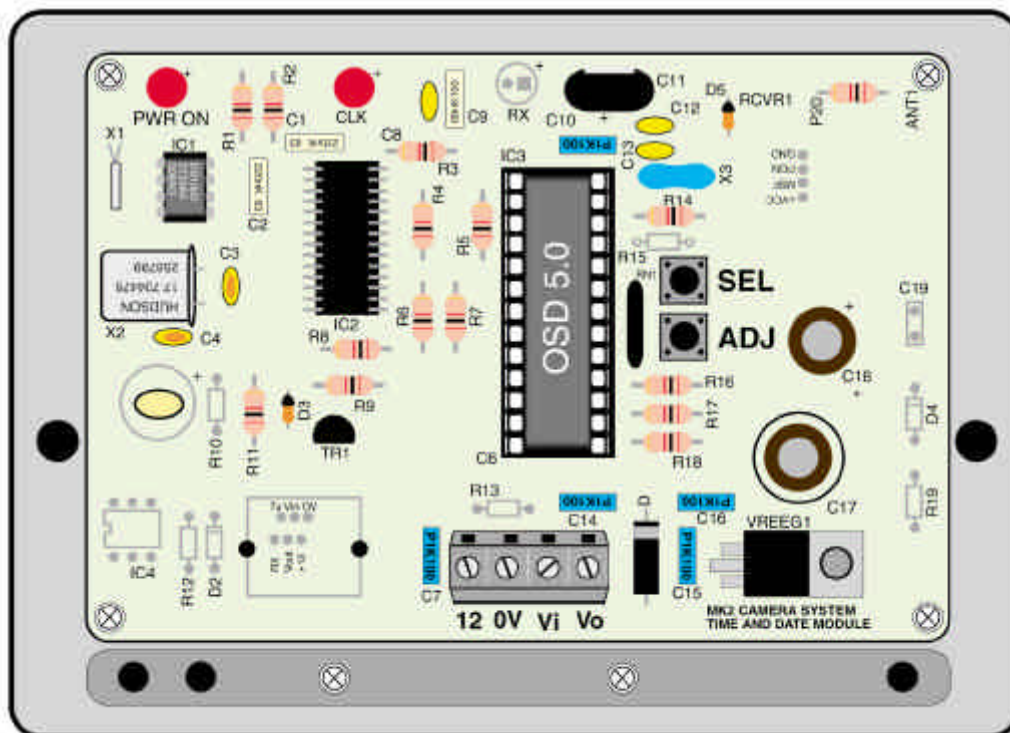
- GMT time stamp saves UK time adjustment for Summer/Winter.
- 12V operation.
- Works with any CCTV system.
- Day & Date Stamp.
- Battery back-up in the event of a mains failure.
- Quick and easy installation via terminal strip.



**Introduction**

The CCT871 time and date module can be used with any CCTV system that uses standard 1V pp video for its output. There are only four connections to the unit, two for a suitable 12V power supply, and two more for the video in and video out signal.

**Wiring**



Connections are as follows:

Power	12V
Power	0V
Video In	Vi
Video Out	Vo

# CCT871 SYSTEM Q TIME & DATE GENERATOR INSTRUCTIONS

## Setting

The unit is set up using two buttons in the centre of the board, marked SEL and ADJ. All adjustments are made through an on-screen menu system accessed through these buttons.

**SEL** - Is an abbreviation for - *Select*  
**ADJ** - Is an abbreviation for - *Adjust*

## To adjust the time and date

- Pressing the SEL button once will bring up the menu.
- To adjust the time and date select 'Adjust Time and Date' by pressing the ADJ button once.
- To alter the display, press the ADJ button to advance the digit until you have the figure required.
- To move onto the next figure, press the SEL button and ADJ again until all are as required.
- Once you get back to the time, the SEL button will take you back to the main menu.
- Pressing SEL a second time will exit the setup menu.

## Specifications

Voltage	12V D.C.
Current Consumption	100ma
Battery Backup	Typical 3 days
Connection method	Terminal strip
Size	40mm x102mm x 142mm
Weight	212g
Colour	Black case

All specifications are approximate. System Q Ltd reserves the right to change any product specification or features without notice. Whilst every effort is made to ensure that these instructions are complete and accurate, System Q Ltd. cannot be held responsible in any way for any losses no matter how they arise from errors or omissions in these instructions.