

Product information



UK

- | | | |
|---------------------------------|------------------------------|---------------------------------|
| A: Open default e-mail | E: Play button | J: Standby button |
| B: Search button | F: Mute button | K: Wake up key |
| C: Open favorites folder | G: Volume up button | L: Num lock indicator |
| D: Open default homepage | H: Keyboard cable | M: Caps lock indicator |
| | I: Volume down button | N: Scroll lock indicator |

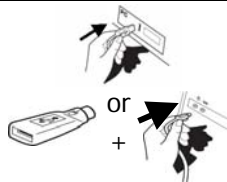
Installation

1



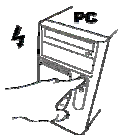
Turn off PC/Notebook

2



Connect USB or PS2 to PC/Notebook

3

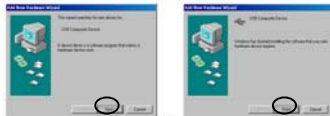


Turn on PC/Notebook

4

- Windows 2003/XP/2000/ME → Finished
- Windows 98SE → usb connected → 5
- Windows 98SE → ps2 connected → 6

5



⚠ Connect mouse to computer for installing default usb keyboard driver.

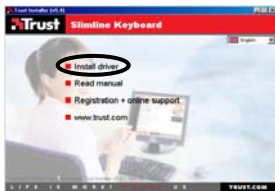
⚠ Insert Windows 98SE installation CD-rom.

6



Insert Trust CD-rom

7



Install Trust Slimline Keyboard driver for multimedia functions

8



Continue with next

9



System restarts
Keyboard is ready for use

Reminders



Keys

- ⚠ Install driver for Windows 98 for using multimedia and internet keys.
- ⚠ Euro key does not work, try other application/font.
Check www.microsoft.com for information about application/font support for euro key.
- ⚠ Wake-up/standby function does not work. Check your computer BIOS settings.
Power management keys require: Mainboard with ACPI support

General usage

- ⚠ Open mediaplayer, before using multimedia keys
- ⚠ Be sure your USB is turned on in computer BIOS Settings

If you have any problems, go to www.trust.com/14211 for FAQ, drivers and manuals.

Safety

- Do not open or repair this device yourself.
- Keep this device away from liquids, such as water.
- Make sure nothing is placed on the cable and prevent the cable to become worn or damaged.
- Under the following circumstances, remove the plug and have the device repaired by qualified personnel:
 - The cable or plug is damaged

- The device has been dropped or the casing has been damaged
- The device is clearly not operating correctly

UK



- This device meets the essential requirements and other relevant conditions of the applicable European directives. The Declaration of Conformity (DoC) is available at www.trust.com/14211/ce



- If possible, dispose of the device at a recycling centre. Do not dispose of the device with the household waste.

Warranty & copyright

- This product has a two-year manufacturer's warranty which is effective from the date of purchase. For more information see www.trust.com/warranty
- Reproduction of this manual or any part of it is prohibited without permission from Trust International B.V.