

# *SightBoss* System User's Manual

For use with the DVR365 DVR range



*Network all your DVR365 units using the  
SightBoss software*

**Version 3.0**

Table of Contents	Page
Welcome	4
1. Features	4
SightBoss Explained	4
2. Installation	4
2.1 Environment	4
2.2 Installation	5
2.3 Uninstall	7
3. Main Window	8
3.1 Interface	8
3.2 Device Operation	9
3.2.1 Device Management	10
3.3 Colour Setting	12
3.4 PTZ	13
3.4.1 Direction Keys & 3D positioning key	13
3.4.2 Speed	13
3.4.3 Zoom/Focus/Iris	13
3.4.4 Auto Scan	14
3.4.5 Pattern	15
3.4.6 Preset	15
3.4.7 Auto Tour	16
3.5 Plan Management	16
3.5.1 Add Small Plan	17
3.5.2 Add Large Plan	19
4. Five Function Keys	22
4.1 Realtime Monitor Operation	22
4.1.1 Network Connection	22
4.1.2 Switch Preview/Monitor Mode	23
4.1.3 Realtime Monitor Window	23
4.2 Record	24
4.2.1 Search	25
4.2.2 Download	25
4.2.3 Playback	26

4.3 Device	27
4.3.1 Information	27
4.3.2 Configuration	27
4.3.2.1 Device Configuration	28
4.3.2.2 General	28
4.3.2.3 Encode	29
4.3.2.4 Schedule	29
4.3.2.5 RS232	30
4.3.2.6 Network	30
4.3.2.7 Alarm	31
4.3.2.8 Detect Setup	31
4.3.2.9 PTZ	32
4.3.2.10 Tools	33
4.3.3 Upgrade	33
4.3.4 Control Record	34
4.3.4.1 User Management	35
4.3.4.1.1 Account Control	36
4.4 System	40
4.4.1 Local Record	40
4.4.2 Local User Manager	40
4.4.3 System Log	41
4.4.4 About	41
4.5 E-map	42
4.5.1 Add an E-map	42
4.5.2 Remove an E-map	43
4.5.3 Modify an E-map	43
4.5.4 E-map Operation	43
4.5.5 Device Operation	44
4.5.6 Open Device	44
4.5.7 Multiple E-maps Operation	44
4.5.8 Multiple Sub E-maps Setup	45
5. Appendix	46

## **Welcome**

Thank you for using SightBoss.

This operating manual is designed to be a reference tool for the installation and operation of your system.

Here you can find information about this multiple-client features and functions.

## **1. Features**

Multiple-client has the following features:

Manages a number of DVR devices

Supports multiple-device connections, real-time surveillance and playback

Allows device management, log review and user management

Controls PTZs and alarm devices,

Video record controls

## **SightBoss Explained**

The SightBoss software not only controls the individual DVR setup and control features, but also allows a user to control a number of DVR365s remotely as a monitoring tool. The software allows the building of a monitoring plan covering one or more DVRs, so that timed displays from individual channels across the DVRs are sequenced within a 24 hour period. No need now to log onto different static IP addresses for the individual DVRs as these can be entered into the plan allowing instant monitoring facilities.

## **2. Installation**

### **2.1 Environment**

We recommend the following configuration:

Hardware

CPU P4 2.0GHz

Display card: must support hardware zoom - such as ATI, TNT2 PRO. We recommend ATI9800 or above dual channel. 128M/128bit

Network card: 100M

Software:

For client end we recommend Windows 2000 or Windows XP.

## 2.2 Installation

Install from the CD by running Setup then “Install Client Software” located on the “Client Software Tab” or by launching SightBoss-Setup.exe manually. See figure 2-1.



Figure 2-1

Then the InstallAware Wizard displays as per Figure 2-2.



Figure 2-2 InstallAware Wizard

Enter your Name and Company name followed by 16 character alpha/numeric Serial Number. The number will be found on CD cover sleeve.



Figure 2-3

If the Serial Number entered is not valid, the following error message will be displayed as per Fig. 2.4



Figure 2-4

Click next to continue or select folder name. The following image will appear. See Figure 2-5.

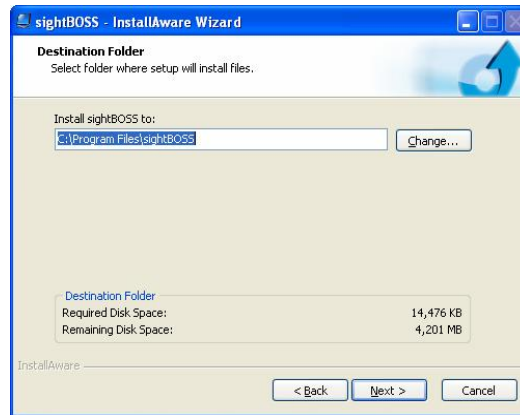


Figure 2-5 Select Folder

Click next to continue, the following image will be displayed. See Figure 2-6.



Figure 2-6 Ready to Install SightBoss program

Now click Install to start the SightBoss install. The image is shown as in Figure 2-7.



Figure 2-7 Installation progress

You should now see multiple-client icon on the desktop displayed. See Figure 2-9.



Figure 2-9 SightBoss 2007-A

### 2.3 Uninstall

There are two ways for you to uninstall the multiple-client.

Click Start, then Program, then SightBoss, then Uninstall SightBoss.

Click Start, then Control Panel and then select add or remove programs. Select SightBoss, then click on 'Remove'.

## 3 Main Window

### 3.1 Interface

Multiple-client main window is shown as in Figure 3-1.

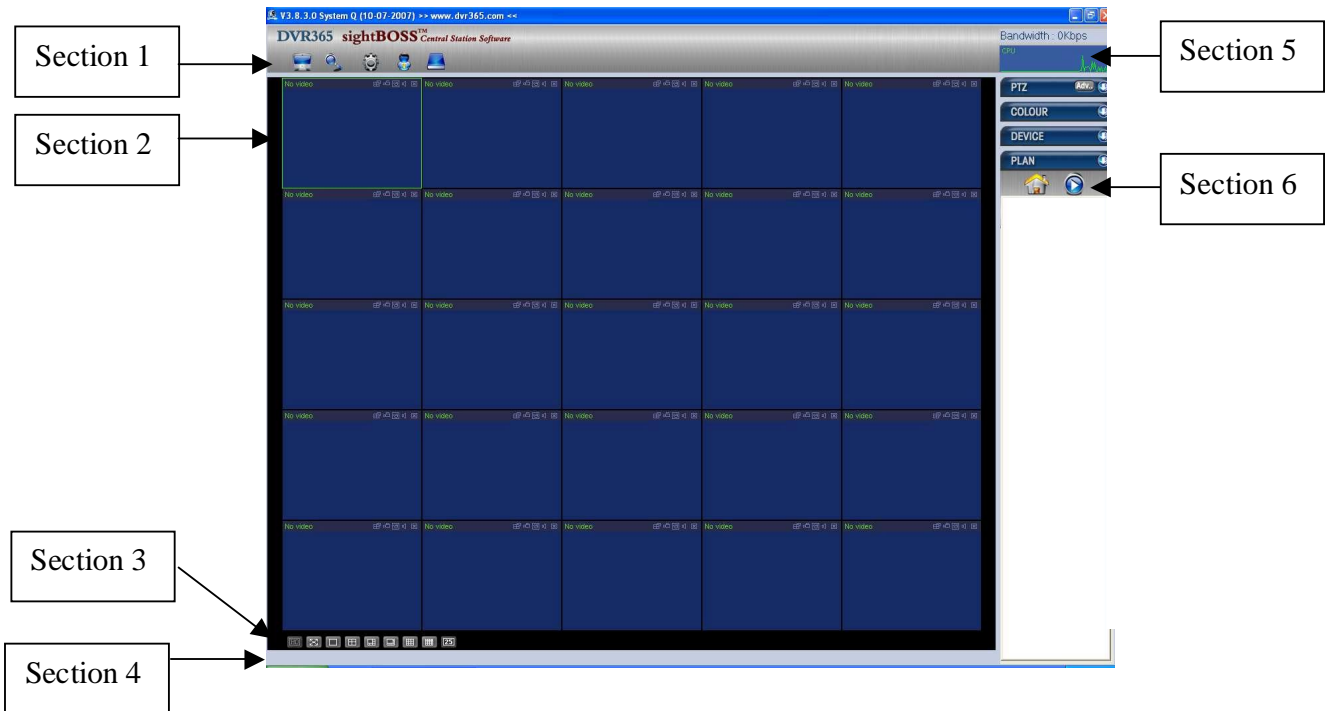


Figure 3-1 Main window

There are a total of six sections:

Section 1: There are five function keys: monitor, record, device, system and e-map. Please refer to chapter four for detailed information.

Section 2: This is where you view video channels.

Section 3: This is where you select display mode. System supports the following display modes: Full-screen /Single window/Four-window/Six-window/Eight-window/Nine-window/sixteen-window.

Section 4: This is where you view current help information.

Section 5: This is where data flux and CPU status are displayed.

Section 6: There are four function menus: PTZ/Colour setting/Device/Plan. Please refer to chapter three for detailed information.



### 3.2 Device Operation

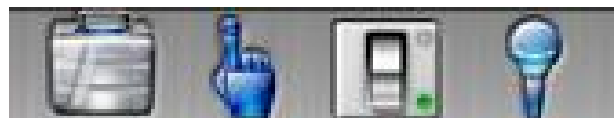
In Figure 3-1, click device button in section 6, the image is shown as in Figure 3-3.



Figure 3-3 Device interface

There are four function keys. See Figure 3-4.

1. Device Management: This is where you add a physical DVR to your device list.
2. Connect/Disconnect: Select a device or camera and then click this button to connect/disconnect from it.
3. Reboot: Select a device and then click this button to reboot.
4. Talk: Select a connected device and then click this button to begin remote audio talk.



1                      2                      3                      4

Figure 3-4 Device function keys

### 3.2.1 Device Management

In Figure 3-3, click device management button (Button 1 in Figure 3-4), the following image is shown below. See Figure 3-5.

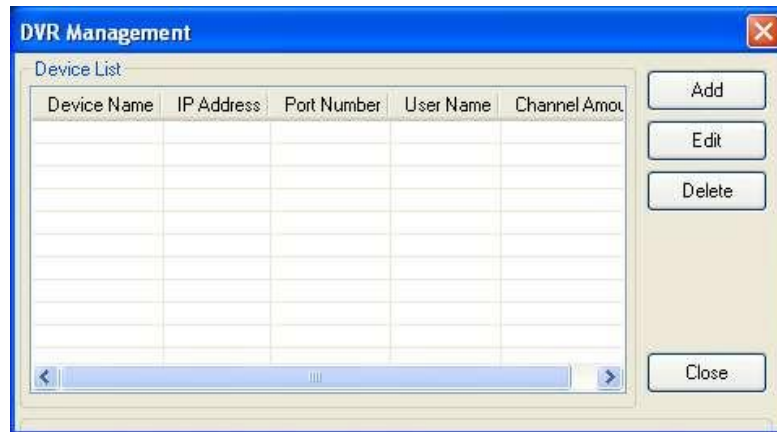


Figure 3-5 Device management

Click add button, you can see the following display for you to add a new device. See Figure 3-6. Please input device name (such as DVR), IP address, user name, password and port number (Default 37777)  
Click save button and then click close to exit.

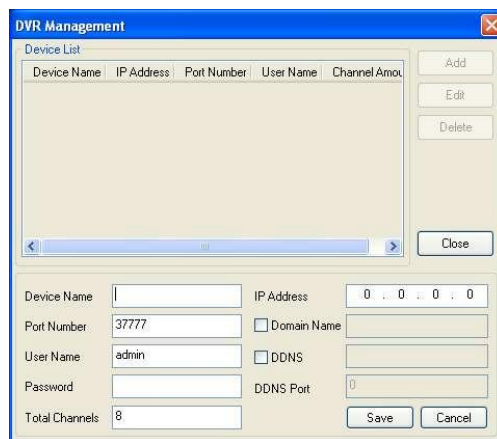


Figure 3-6 Add new device

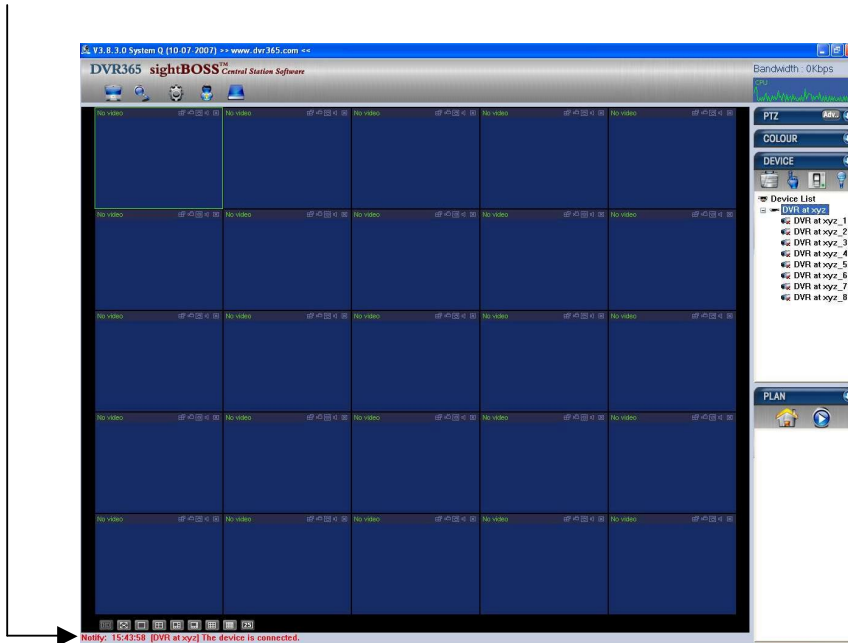
**NOTE:** The username and password entered here are those configured on the actual DVR that you are connecting to. When populating this list with multiple DVRs it is common practice to have different usernames and passwords for various DVRs.

After you add a new device, you can see below the device list, that there is a newly added DVR device. You should see the font below the interface that advises when this device is disconnected. See Figure 3-7.



Figure 3-7

In Figure 3-7, click connection/disconnection button, you can see the red font below the interface says this device is connected. See Figure 3-8.



You can double click here to connect/disconnect either a camera or device.

Also the red cross icon beneath the Device or camera name indicates connection status. Red Cross present = disconnected. Absent = connected.

Figure 3-8

Click on a window and then double click channel name on your right hand, and you will see the corresponding video in the selected window.  
You can click display icons below the screen to switch between various display modes (section 3 in Figure 3-1). See Figure 3-9.

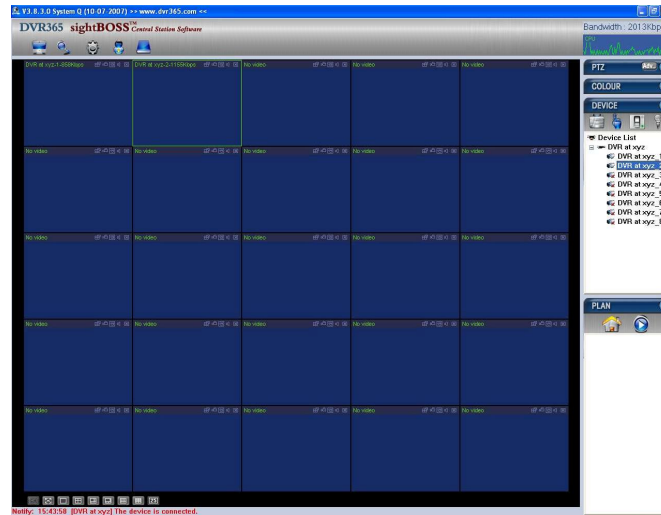


Figure 3-9

### 3.3 Colour Setting

Click colour setting button, the image is shown in Figure 3-10.  
Here you can select a channel and then adjust its brightness, contrast, hue and saturation.  
(Current channel border becomes green).  
Alternatively you can click the default button to use the system default setup.



Figure 3-10 Colour setting

### 3.4 PTZ

Before any PTZ operation is attempted, please make sure you have set the correct PTZ protocol parameters (Refer to 4.3.2 .9 Device-Pan/Tilt/Zoom) in the DVR.  
Click PTZ button, the image is shown as in Figure 3-11.



Figure 3-11  
PTZ interface

#### 3.4.1 Direction key and 3D positioning key

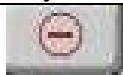

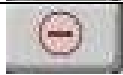


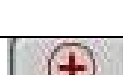
In Figure 3-11, there are eight direction keys.

#### 3.4.2 Speed

System supports eight-level speeds. You can select from the dropdown list. Speed 2 is faster than speed 1. NOTE: This depends on the options available on your PTZ.

#### 3.4.3 Zoom/Focus/Iris

Here is a sheet for your reference.

Name	Function Key	Function	Function Key	Function
Zoom		Near		Far
Focus		Near		Far
Iris		Close		Open

Then click Advance button, you can see the following interface. See Figure 3-12.



Figure 3-12 Advance option

Click setup, you can see the following interface. See Figure 3-13.

#### 3.4.4 Auto scan

In Figure 3-13, move the camera to you desired location and then click the left limit button. Then move the camera again and then click the right limit button to set a right limit.



Figure 3-13 Auto-scan

### 3.4.5 Pattern

Click Pattern button, you can see the following interface .see Figure 3-14.  
You can input pattern value and then click start button to begin PTZ movement.  
System goes back to figure 3-12.  
After you finished camera operation, please go to figure 3-14 to click stop.  
Now you have set one Pattern.



Figure 3-14 Pattern

### 3.4.6 Preset

Click Preset button, the image below is shown. See Figure 3-15.  
Move the camera to your desired location and then input preset value. Click add button and you have set one Preset.

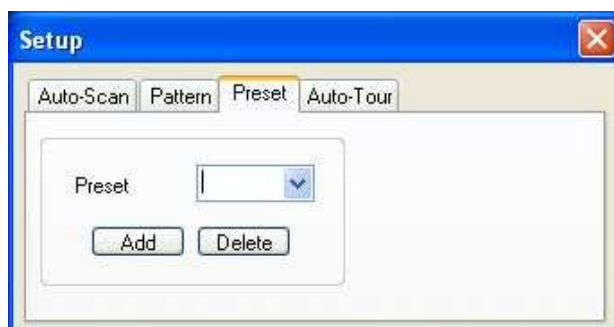


Figure 3-15 Preset

### 3.4.7 Auto tour

Click auto tour button and the image below is shown. See Figure 3-16.

You can input auto tour value and preset value. Click add button, you have added one preset in the tour.

Repeat the above procedure to add more presets in one tour.



Figure 3-16 Auto tour

## 3.5 Plan Management

### What is a Plan and What is Plan Management ?

An operator may wish to view a series of cameras from several DVRs over a period of time, he may want the display of particular cameras viewed to change periodically without human intervention. He can choose a selection of cameras from the available DVRs and specify a period for which each should be displayed, this selection can be saved in a list called a 'plan'. The sightBOSS software can maintain 2 such lists, a master (called 'Large' plan) and a secondary (called 'Small' plan). The 'Small' plan defines the cameras selected and defines how long each camera should be displayed for, these display times being expressed in seconds. The 'Large' plan defines an activation time, for one or more of the 'Small' plans. Each of these plans can be saved with a descriptive name for easy identification and sightBOSS provides a means of adding, editing and deleting these plans under its 'Plan Management' facility.

#### **Example:**

A council may define a master 'Large' plan called **Daytime** becoming active at 09:00 am that uses smaller plans to display cameras around the market square and shopping areas. This may be followed by a second 'Large' plan called **Evening** becoming active at 10:00 pm which calls smaller plans to display cameras around the pubs & clubs. The choice of cameras within any of the small plans may be changed at any time independently of the large plans that use them.



Click plan management button, you can see the following interface. See Figure 3-17.

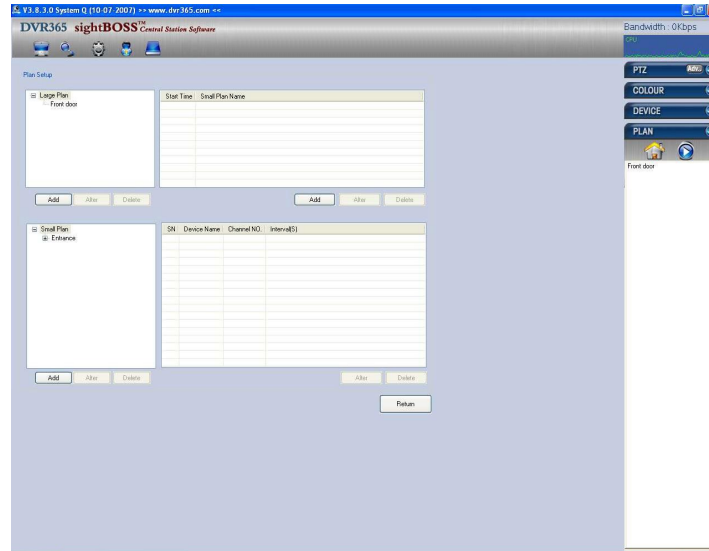


Figure 3-17 Plan management

### 3.5.1 Add Small Plan

Click add button and system displays the following interface. See Figure 3-18. You can input small plan name and window amount (select from the dropdown list) Click OK to add one small plan.

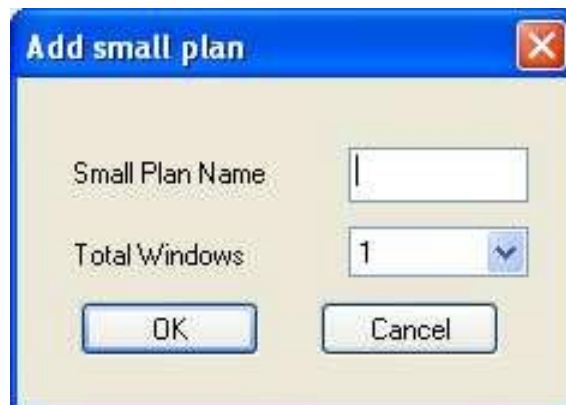


Figure 3-18 Small plan

Click + icon before the channel name and you can view the newly added four channels.  
Click device channel and then select channel number.  
System displays a dialogue box for you to set the interval parameter. See Figure 3-19.

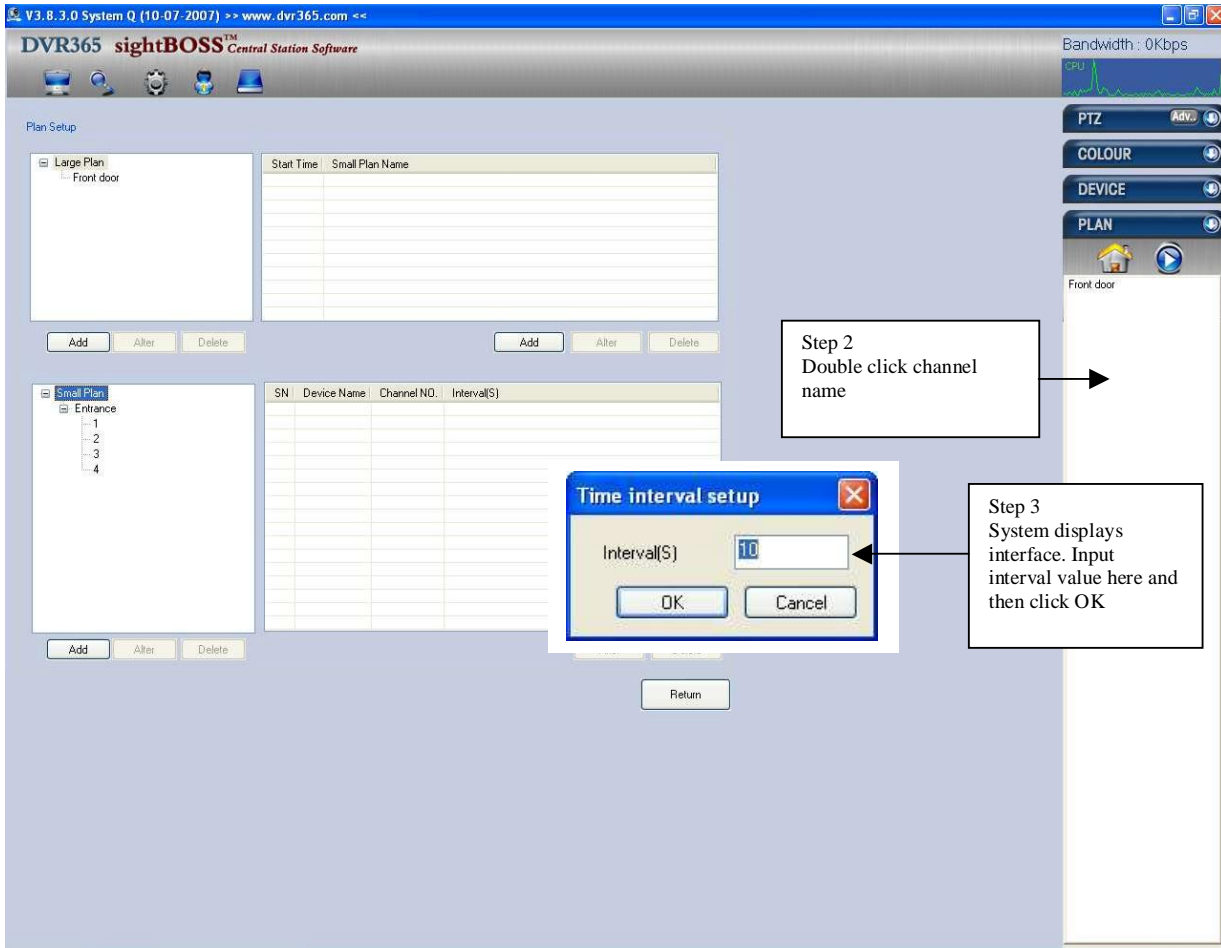


Figure 3-19 Interval

Now you can see there is a new small plan. See Figure 3-20. You can repeat the above steps to add more small plans.

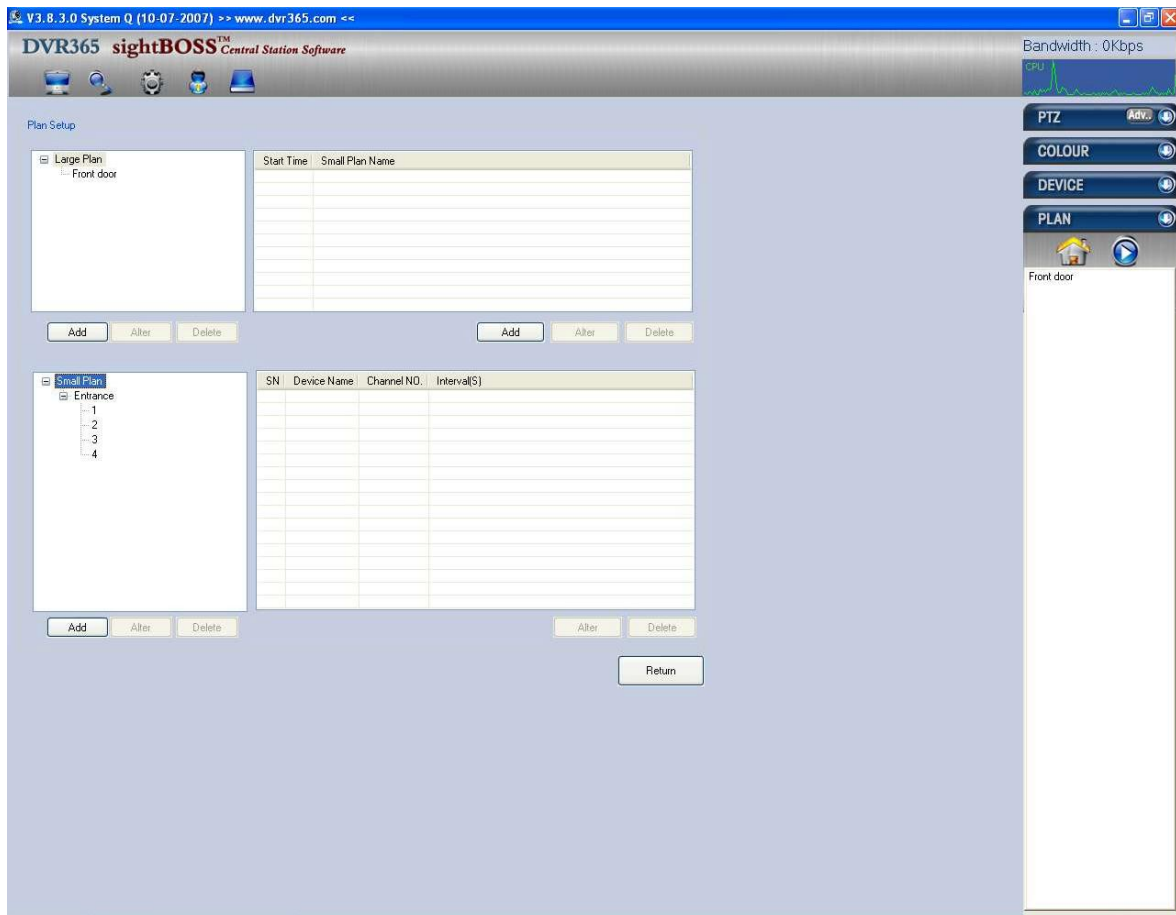


Figure 3-20 Small Plan

### 3.5.2 Add Large Plan

In Figure 3-20, click add button below large plan column. System displays the following interface. You can input large plan name. See Figure 3-21.

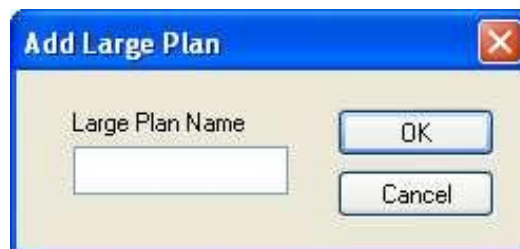


Figure 3-21 Add large plan

Click add button and system displays the following interface. See Figure 3-22.  
Input start time and select corresponding small plan name from the dropdown list.  
Click OK button and you will see system has added a new large plan.  
You can repeat the above steps to add other small plans into this big plan.

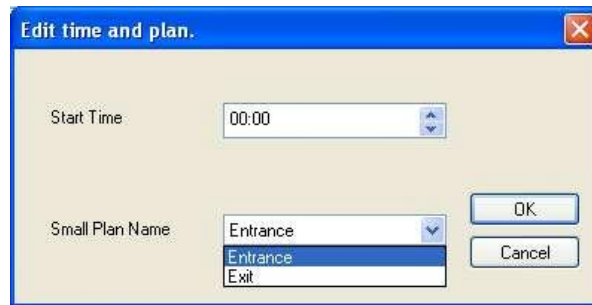


Figure 3-22 Time

NOTE: Time is specified as hours and minutes. The plan will match the current PC displayed time to begin running and does not reference time set in a DVR.

In Figure 3-23, you can see a large plan front door consists of two small plans: Entrance and Exit.

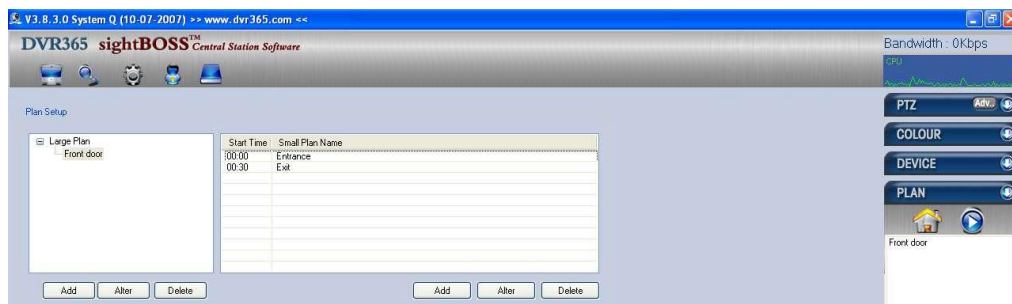


Figure 3-23 Large plan

After you create a large plan, you can click the plan name and then click start to enable a large plan. See Figure 3-24.



Figure 3-24 Enable Large Plan

## 4 Five Function Keys

### 4.1 Real-time Monitor Operation

In real-time monitor mode, you can operate the following functions.

#### 4.1.1 Network Connection

Select a device name and then click the connect/disconnect button to connect current device to network. You will see the little red cross below the name, disappears. Now click a window and then double click channel name to see the corresponding video displayed in the current window.

Please refer to Figure 4-1 for connection/disconnection information.

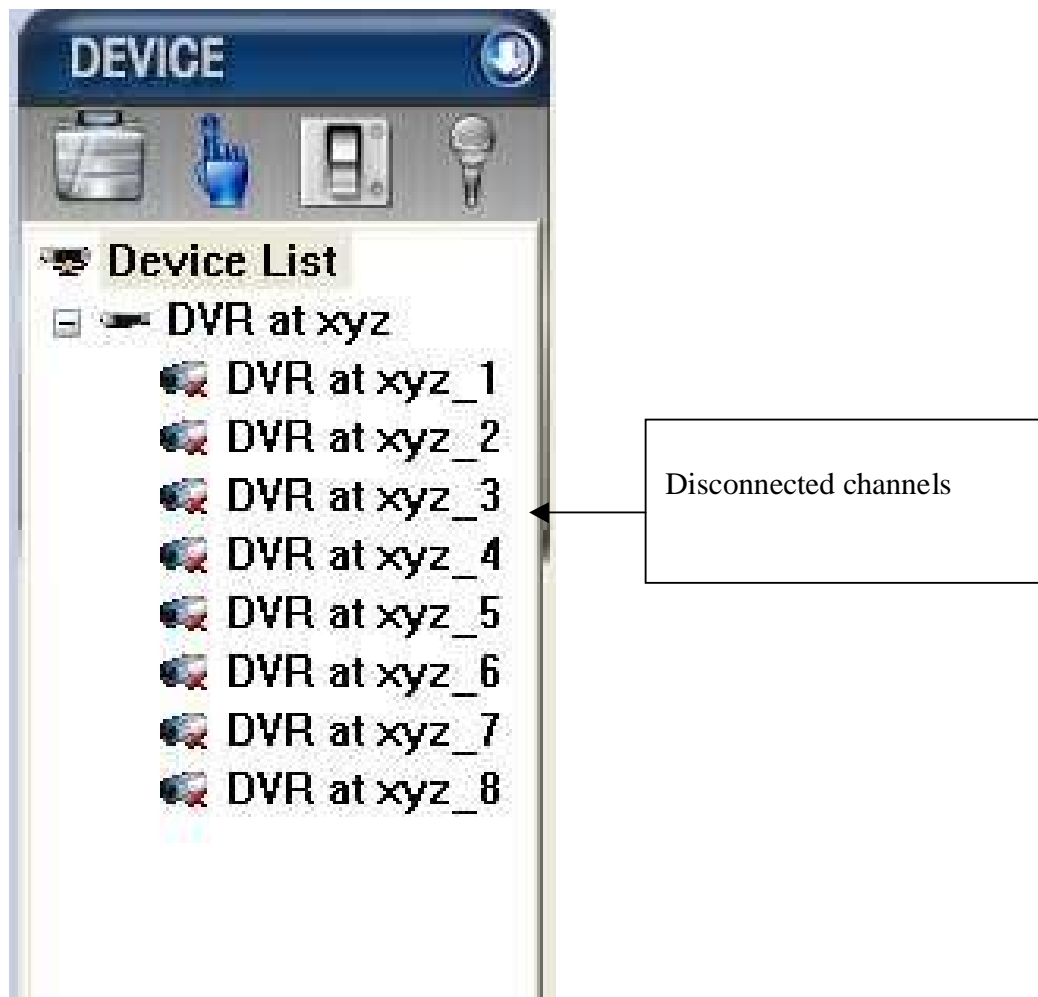


Figure 4-1 Connection/Disconnection

#### 4.1.2 Switch between Preview Mode and Real-time Monitor Mode

You can click the preview button to view total channels in one window.

System displays the following interface. See Figure 4-2.

Right click one video in the preview mode you can view current channel real-time monitor data.

Right click again system goes back to multiple-screen preview mode.

You can highlight the check box to disable this interface when you enter the option next time.



Figure 4-2 Prompt

#### 4.1.3 Real-time monitor window

In the video window interface, you can see the device name in the top left-hand corner. There are five function keys also situated in the top right-hand corner. See Figure 4-3.



Figure 4-3 Real-time monitor

For detailed function key information, please refer to Figure 4-4.

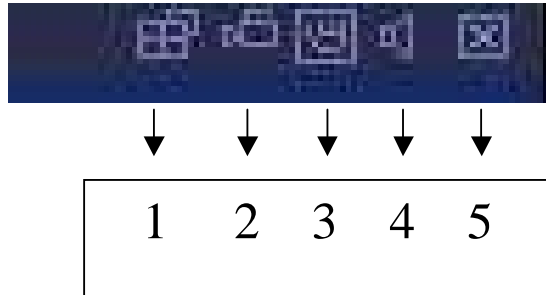


Figure 4-4

- 1: Switch display mode: resize or switch to full screen mode.
- 2: Local record. When you click local record button, the system begins recording and this button becomes highlighted. You can go to system -> local record to set video file path.
- 3: Capture picture. You can snapshot important video. All images are memorized in system client folder \download\picture (default).
- 4: Audio :Turn on or off audio.(It has no relationship with system audio setup )
- 5: Close video.

## 4.2 Record

Click record button and the following image below is displayed. See Figure 4-5.

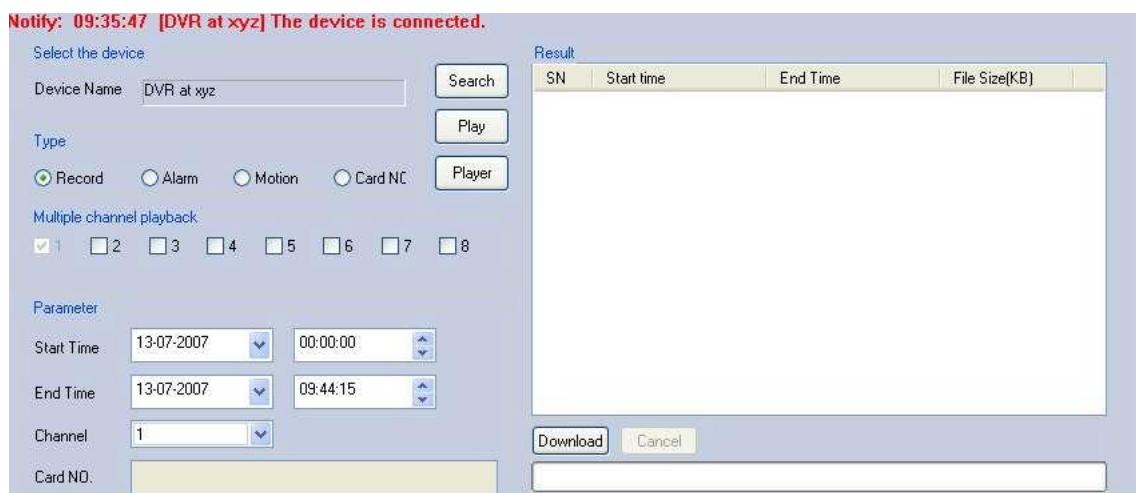


Figure 4-5 Record



### 4.2.1 Search

In Figure 4-5 you can select file type, start time/end time, device name and corresponding channel, click the search button and view display. See Figure 4-6.



Figure 4-6 Search

### 4.2.2 Download

You can select one or more files in the search result column to download to your local PC. During download procedure, you can refer to progress bar. See Figure 4-7.

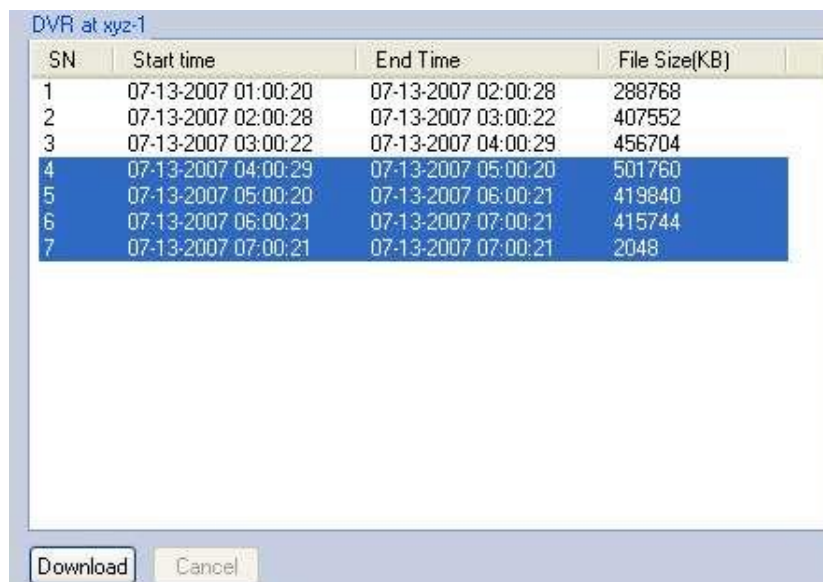


Figure 4-7 Download

### 4.2.3 Playback

In the search result interface, there are two ways for you to playback video. Select file name and then click playback button or double click filename. The playback interface is shown as below. See Figure 4-8.

The player interface provides the following functions:

1: Frame rate. There are nine options: 1f / 2f / 3f / 6f / 12f / 25f / 50f / 75f / 100f

You must click corresponding segment to select.

2: Play

3: Pause

4: Stop

5: Start record


6: Previous file

7: Backward

8: Forward

9: Next file

10: Capture: Use this feature to capture an image..

11: Sound: + is to increase volume, - is to decrease volume. Click icon “  ” to turn on or off volume.

12: Current frame rate: Here you can view current frame rate.

13: Current status: Here you can view play status bar, play mode and volume status (on or off).

14: Convert to AVI: System can convert the video file of suffix name such as mp4, Dav, mpeg, H264 to AVI format.

15: Full-screen: There are two ways: click full-screen button to review in full-screen mode.

The other way is to double click current window to review in full-screen.

16: Play mode: shuffle or repeat.

17: Change language: The player supports two languages: English and Chinese. System displays dialogue box asking to restart. Click OK, System automatically restarts.

18: Parameter setting. You can set parameter setup.

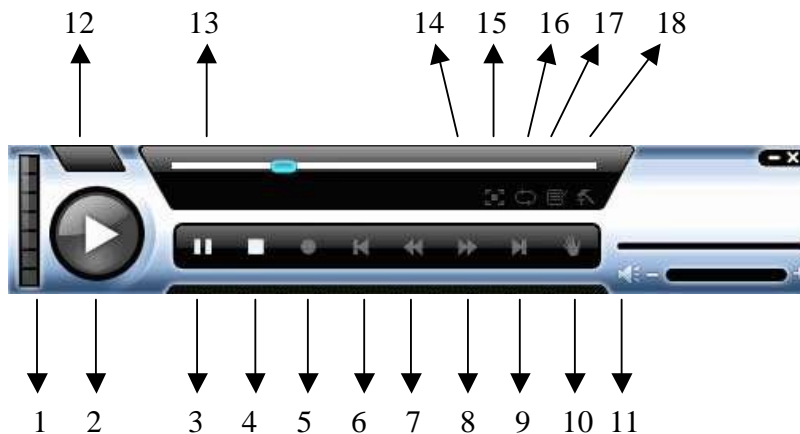


Figure 4-8 Playback

### 4.3 Device

Click device button and the image below is displayed. See Figure 4-9.

There are five items:

- Information
- Configuration
- Upgrade
- Control Record
- User Management

#### 4.3.1 Information

Information interface is shown as in Figure 4-9. Here you can view device information.

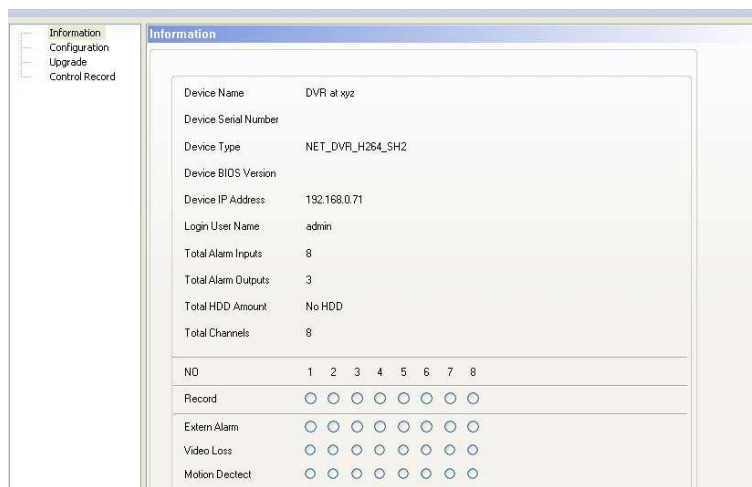


Figure 4-9 Device

#### 4.3.2 Configuration

Click configuration and the interface below will be displayed as in Figure 4-10.

You can see there are two items: device configuration and setting.

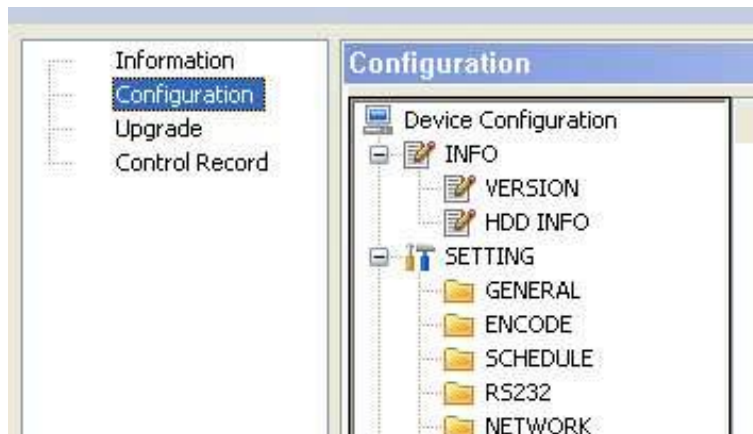


Figure 4-10 Configuration

### 4.3.2.1 Device configuration

Click device configuration, you can see system hardware and software version information. See Figure 4-11.

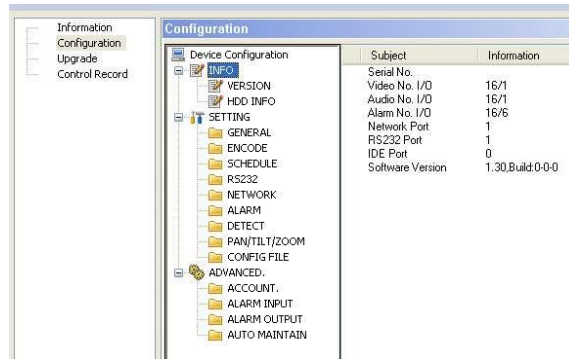


Figure 4-11 Device Configuration

### 4.3.2.2 General

Click general button to set device time, time format etc. See Figure 4-12.

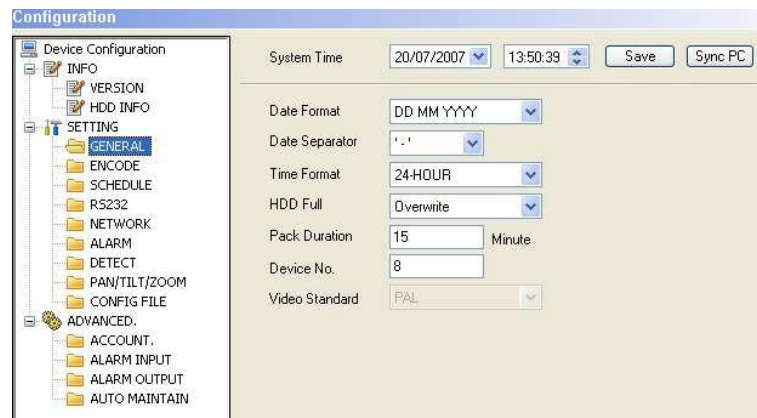


Figure 4-12 General setup

### 4.3.2.3 Encode

Click Encode Set and the image below will be displayed. See Figure 4-13. Select channel number from the dropdown list and then set frame rate and resolution etc.

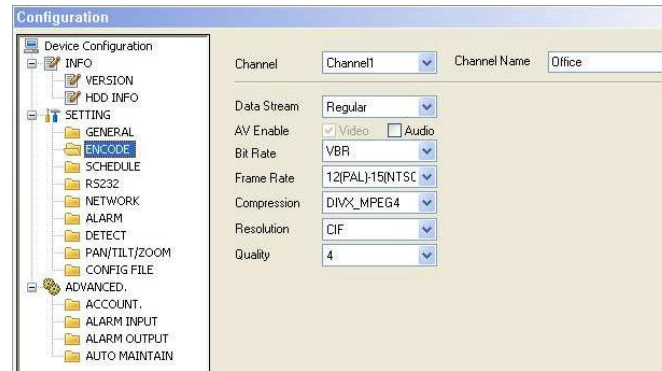


Figure 4-13 Encode

### 4.3.2.4 Schedule

Click schedule button and the image below will be displayed. See Figure 4-14. Select channel number and then set period.

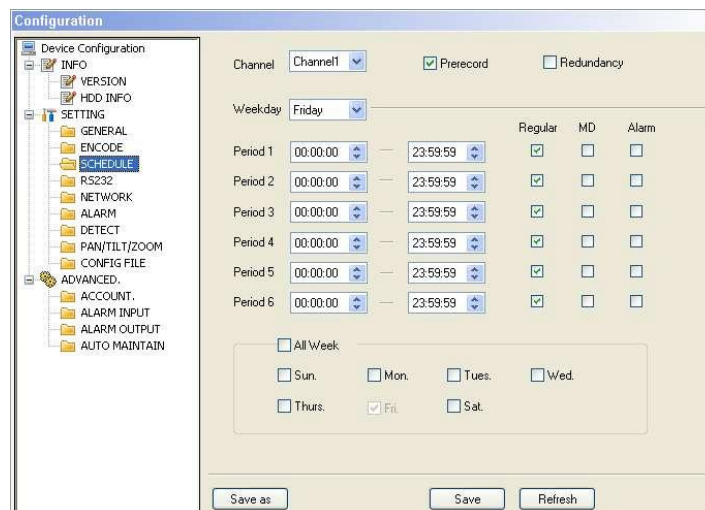


Figure 4-14 Schedule

### 4.3.2.5 RS232

Click RS232 button and you can set data bit, stop bit, baud rate, parity etc. see Figure 4-15.

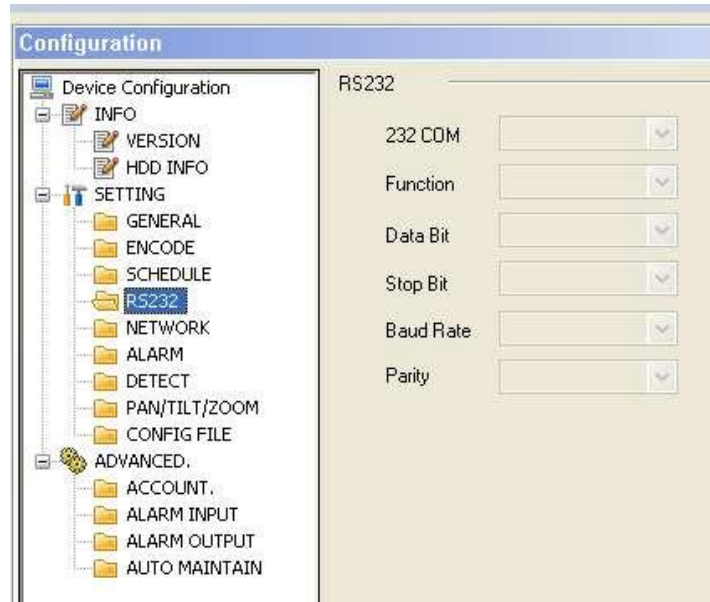


Figure 4-15 RS232

### 4.3.2.6 Network

Click network button to set IP address, Subnet Mask, Gateway etc. see Figure 4-16.

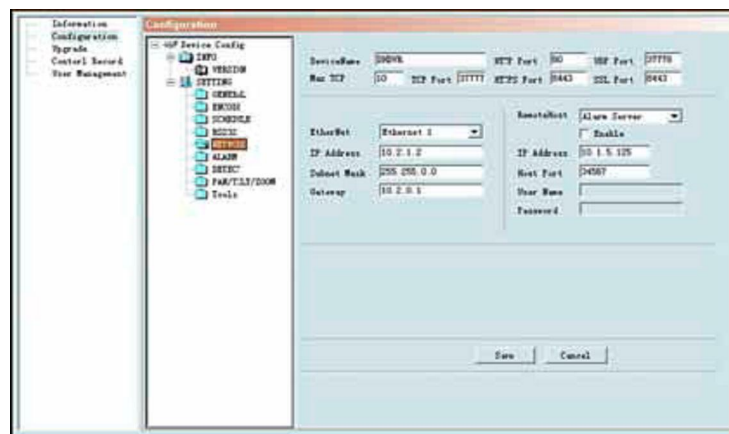


Figure 4-16 Network

### 4.3.2.7 Alarm

Click alarm button and the image below will be displayed. See Figure 4-17.  
Set alarm channel, alarm type etc.



Figure 4-17 Alarm in

### 4.3.2.8 Detect setup

Click detect button and system will display following interface. See Figure 4-18.  
Set motion detection type, motion detection region, sensitivity etc.

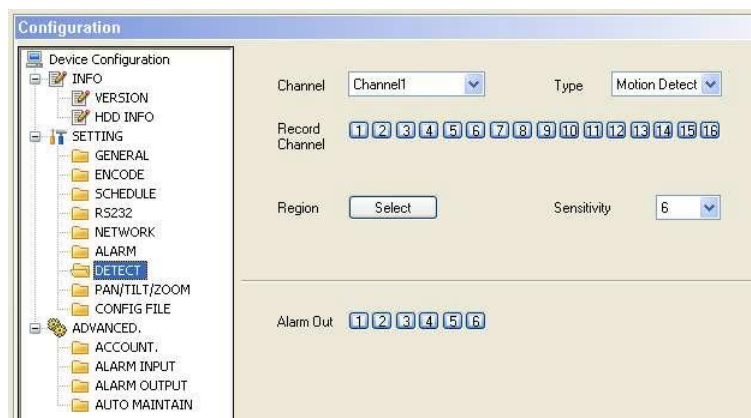
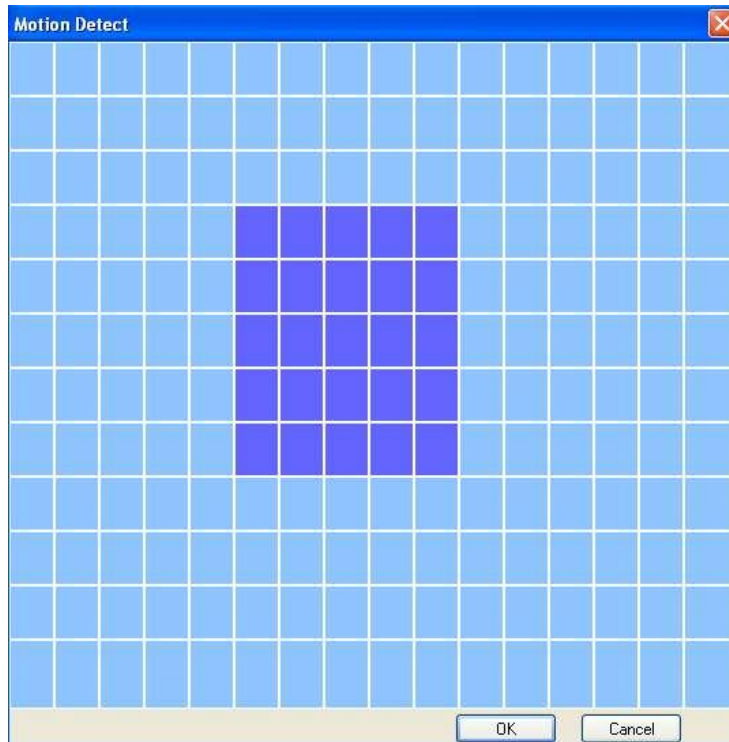


Figure 4-18 Detection setup

In Figure 4-18, click select button and the image below will be displayed. See Figure 4-19  
You can drag your mouse in the screen to set motion detection section. The blue zone is the motion detection section.



### 4.3.2.9 PTZ

Click the pan/tilt/zoom button and the following image will be displayed. See Figure 4-20. Set PTZ information such as protocol, address etc.

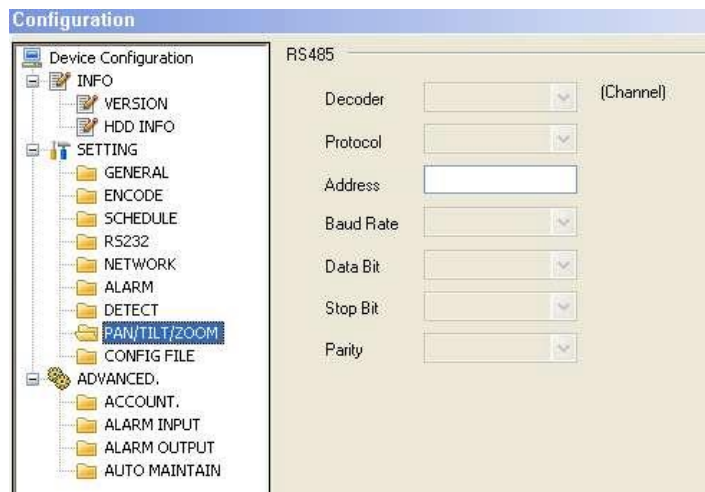


Figure 4-20 PTZ



#### 4.3.2.10 Tools

Click Tools button and the following image will be displayed. See Figure 4-21.

You can view system directory and load or save system configuration.

If you click the save configuration button you can save current system setup into a file (extension name CFG) or you can click load configuration button to load a configuration file.

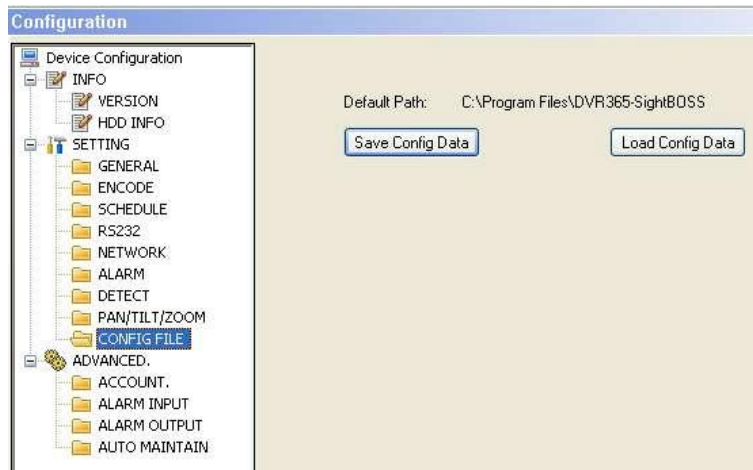


Figure 4-21 Tools

#### 4.3.3 Upgrade

Click upgrade button and the following image will be displayed. See Figure 4-22.



Figure 4-22 Upgrade

Click BIOS upgrade tool and system displays the following interface. See Figure 4-23. You can select upgrade file and then click send button to begin upgrade. Please note that opening the file button is invalid if there is no connected device.

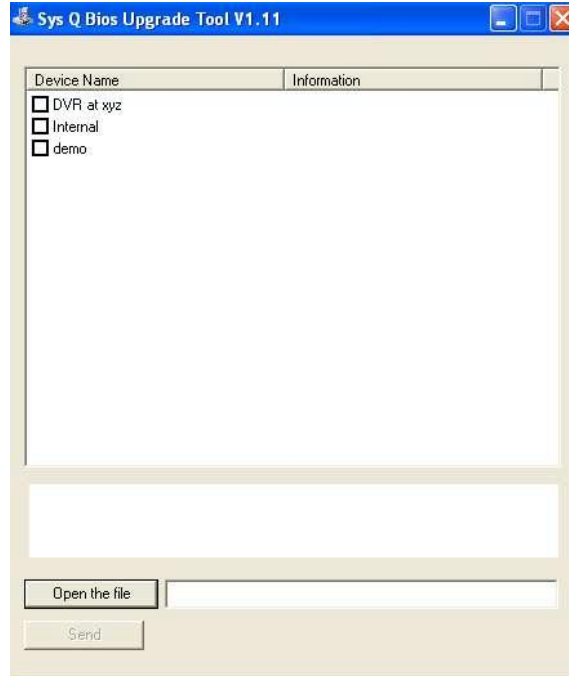


Figure 4-23 Open file.

#### 4.3.4 Control Record

Click Control Record button and the system displays the following interface. See Figure 4-24. Select a device and then select corresponding record type.

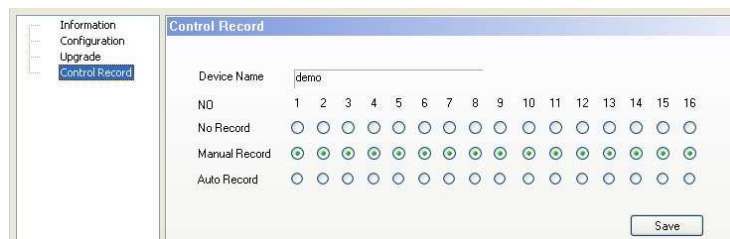


Figure 4-24 Record management

#### 4.3.4.1 User Management

Click User Management button and system displays the following interface. You can add /delete a user (group) or modify its corresponding password. See Figure 4-25.

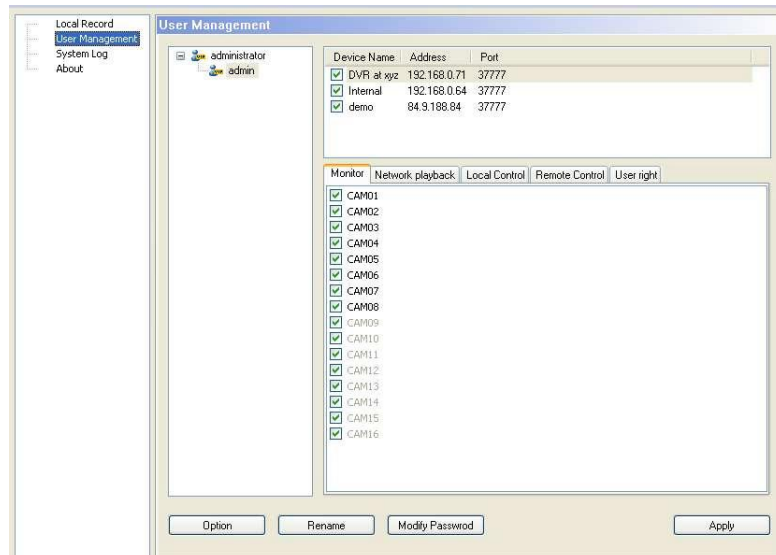


Figure 4-25 User management

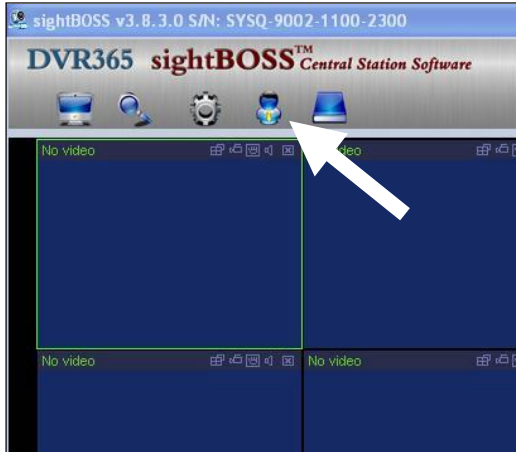
SightBoss allows access of multiple DVRs but can also be used from different locations accessing one or more DVRs. It is therefore important to note the following rules:

1. It is important that an administrator changes the admin password to a unique name which is best set at 6 characters in lower case.
2. When allocating certain rights of access these appertain to the Group and not to the person. Set up a Group with necessary rights and then allocate users who can use this Group.
3. Whilst it is possible to have several administrators (providing different passwords are allocated) it is recommended that for ease of operation that only one admin user is allocated. Users can be setup under a User Group and have rights allocated with the overall control by the administrator.

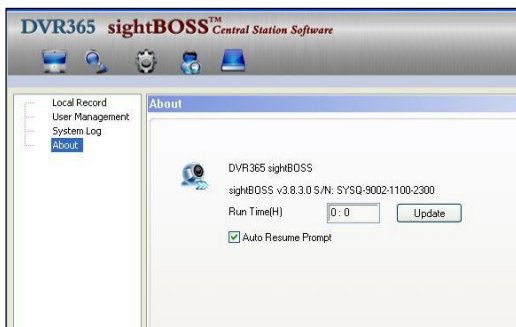
The ways in which these Groups and Users are setup are explained below.

### 4.3.4.1.1 Account Control

SightBoss has a powerful 'User Management' tool that controls user access to the program and allows individual users rights for operating the system.



From initial start up, click the 'User Config' icon to access the 'User Management' menu.



Now click 'User Management' link.

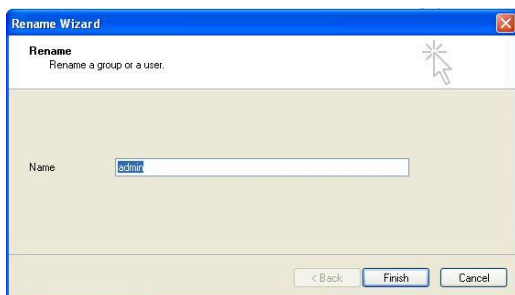


The 'User Management' screen will now be displayed. From here 'User Name', 'Password' and permissions can be set.

NB. Once set, these details should be kept in a safe place. If lost, there is no alternative way to access the program, as a result it will have to be re-loaded and re-configured.



Highlight the 'admin' link as shown above and press the 'Rename' button at the bottom of the screen.



The following 'Rename Wizard' should now appear. A new name can now be input here. Convention dictates that no more than six lower case letters are used.

Remember that this name will need to be typed in for each SightBoss session. A short name is easier to remember and leaves less scope for errors.

The 'Finish Button' can now be pressed to save the new 'Name'.



To change the 'Password', press the 'Modify Password' button.

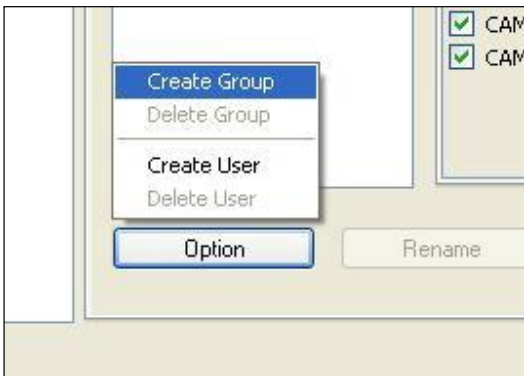


The 'Password Modification Wizard' will now be displayed. The user will now have to enter the 'Old Password', the 'New Password' and confirm the 'New Password'. By pressing the 'Finish' button the user will now be committed to using the new 'Password' to start SightBoss.



On re-starting SightBoss, if complete security of use is required, ensure that the 'Save Password' check box is un-checked.

This will ensure that each session will commence with a blank 'User Name' and 'Password' entry bar.



It is possible to create additional user 'log on' details. In order to do this, a new user group needs to be created. Note that the original 'Administrator' group cannot be added to.

Enter the 'User Management' screen as previously explained.

Press the 'Option' button as illustrated and select 'Create Group'.



The 'New Group Wizard' should now be visible. Select 'Select Level' and choose between 'Administrator' or 'Normal'. 'Administrator' allows full rights over the system. 'Normal' allows restricted rights over the system.

Now enter a name (eg. "staff") in the 'Group Name' entry bar. Again it is recommended that this should be no more than 6 lower case letters.

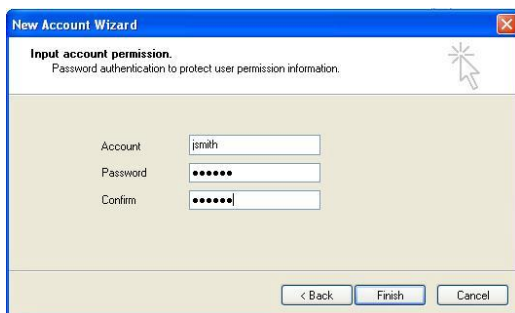


On pressing 'Finish' a new 'User Group' will appear under the existing group.

To create a new 'User' press the 'Option' button again and select 'Create User'



Select the appropriate 'User Group' via the 'New Account Wizard' window and press 'Next' to confirm.

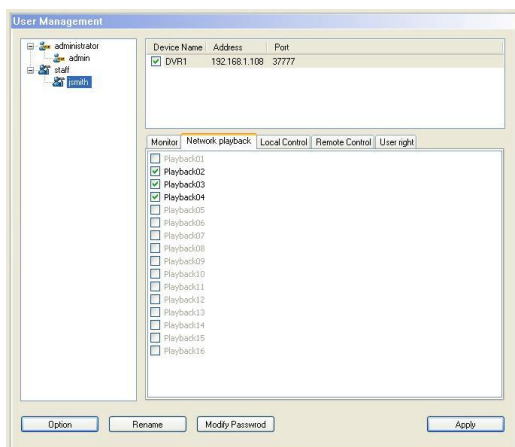


Now fill in the blank fields with the 'Account' user name and 'Password'. Finally confirm the password by re-entering it in the 'Confirm' bar.



The new 'User' "jsmith" can now be seen below the "staff" link. This process can now be implemented for a number of users.

Remember that it is the 'User Group' (not individual 'Users') that can have rights/permissions defined.



By highlighting a particular 'User Group', that group's rights/permissions can be defined by checking the appropriate box.

If the 'User' is highlighted then access to a particular DVR can also be controlled via the upper 'Device' window.

## 4.4 System

Click system button and the following will be displayed.

### 4.4.1 Local record

Local record interface is shown below. You can modify record video backup path and file size. See Figure 4-26

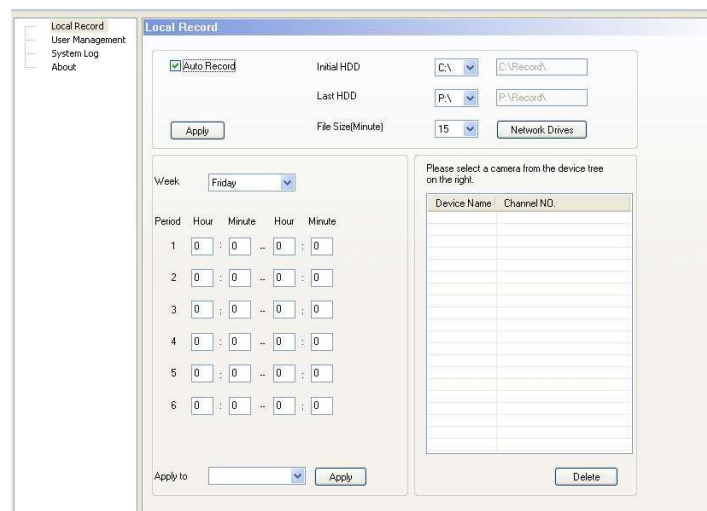


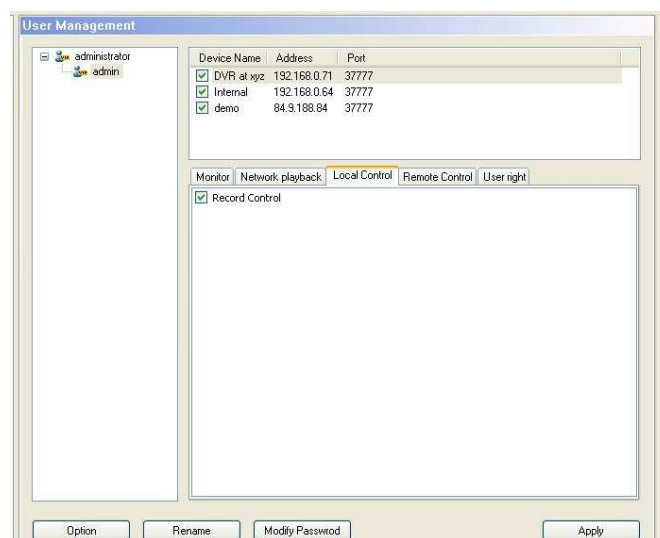
Figure 4-26 System

### 4.4.2 Local User Manager

Click Local User Manager and you can see the following interface. See Figure 4-27.

Local user manager consists of four items: monitor/net playback/local control/remote control/user right.

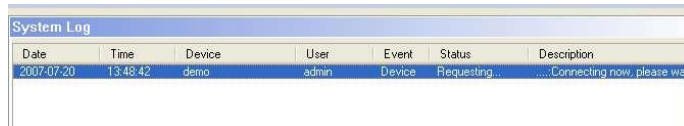
You can select a function by highlighting appropriate checkbox.





#### 4.4.3 System log

Click system log button to view system log information. See Figure 4-28.



Date	Time	Device	User	Event	Status	Description
2007-07-20	13:48:42	demo	admin	Device	Requesting...	...Connecting now, please wait

Figure 4-28 Log

#### 4.4.4 About

Click the About button and the image below is displayed. See Figure 4-29. Here you can view system version information.

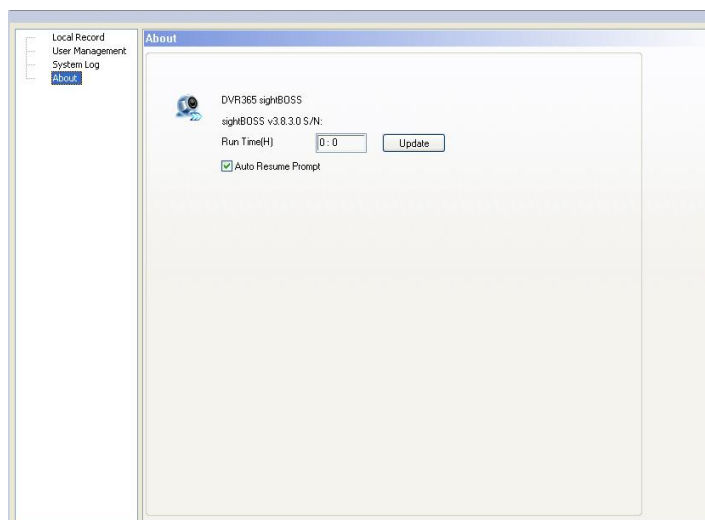


Figure 4-29 About

## 4.5 E-map

Click e-map button and you will see the following interface. There are four sections: Preview, Map, E-map and Functions.

The Functions buttons are : edit, map, picture ,picture edit and save. See Figure 4-31.

Please note you need to highlight edit check box to enable map, picture and picture edit functions.

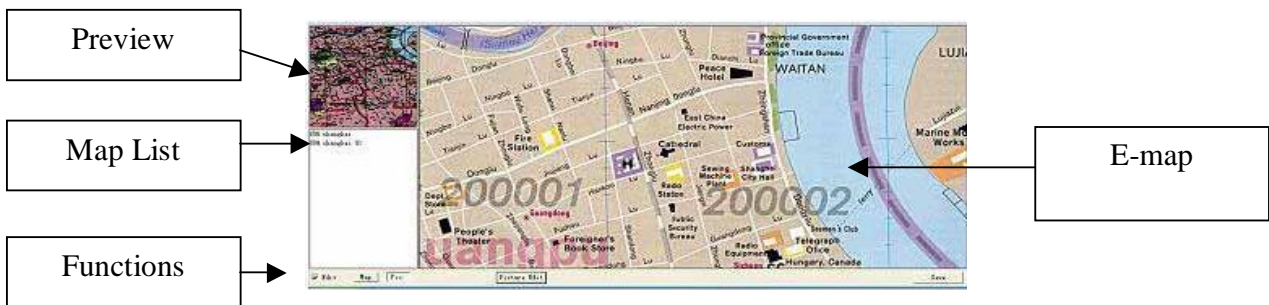


Figure 4-31 E-map Main Window

### 4.5.1 Add an E-map

Click picture edit button in Figure 4-31, and system displays background picture manager interface. See Figure 4-32. You can click add button to add a picture into the map.

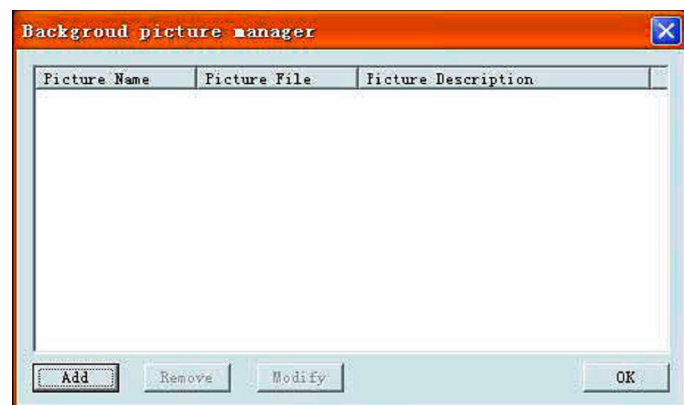


Figure 4-32 Background Picture Manager

Click add button and you can see Figure 4-33.

Click browser button to select picture and then input picture name and description.

Click OK to finish operation. Repeat the procedure to add more pictures.

Finally, you can go to map list section to check newly added maps.

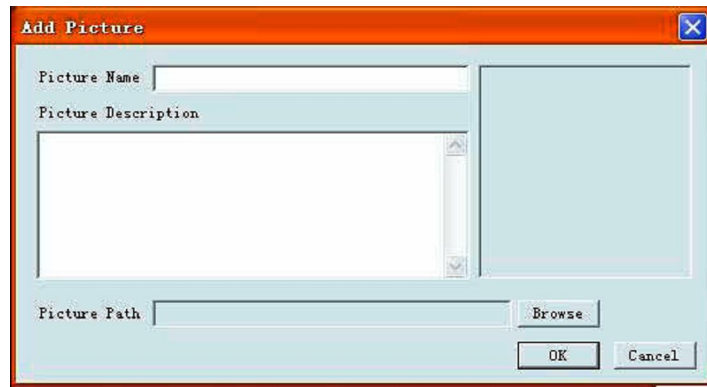


Figure 4-33 Add an E-map

#### 4.5.2 Remove an E-map

In background picture manager interface (Figure 4-32), select picture to remove and then click remove button. System displays a dialogue box asking for your confirmation. Click Yes button to remove current E-map.

#### 4.5.3 Modify an E-map

In background picture manager interface (Figure 4-32), select picture to be modified and then click modify button. System displays E-map property dialogue box (just the same as Figure 4-33). Now you can modify E-map property.

**Tip:** In background picture manager interface (Figure 4-32) you can double click a picture name to modify its property.

#### 4.5.4 E-map Operation

Click picture button, left click picture name and then drag it into E-map section.

You can see an interface as in Figure 4-34.



Figure 4-34 E-map

#### 4.5.5 Device Operation

You can find a newly added E-map in the map list.

Click map button and then select the map you want to add device by double clicking device name.

Now there is a device icon on the map. You can drag it to your desired location on the map.

You will see there is a red icon in the preview section to indicate current position. See Figure 4-35.

Please note when you continuously add devices, you need to select and place each one as system places them initially at the same point.

System only displays devices used in the map so that you can easily identify devices on the map or not.

Click save button to finish the operation.

**Tip:**

In the map preview section, drag rectangle cursor (green rectangle) to change map content in Emap section.



Figure 4-35 Add New Device

#### 4.5.6 Open Device

After you add a device, double click camera icon in the map list. You can enable device to go to real-time monitor mode. Note that inactivated devices display a red cross below the name.

#### 4.5.7 Multiple E-maps Operation

You can add multiple sub-maps in one map. Please follow previous steps.

#### **4.5.8 Multiple Sub E-maps Setup**

Follow the procedures below

Open one map such as map1.

Click picture button and drag map 2 to anywhere in map1.

Click map button and click map 2 to open current map

Double click device name to add device to map 2.

You can view newly added E-map and device list in the map list section.

Click save button. Now you have added one sub-map and its device.

You can repeat this procedure to add more maps.

**Tip:**

You can use one device in several maps.

## 5 Appendix

AudioRecord.dll	Audio interface library
AudioRecordEx.dll	Audio interface enhanced library
decode.dll	Decode library
render.dll	Play library
dhdvr.dll	Network ground library
dhnetSDK.dll	Network interface layer
dhplay.dll	Soft decoder library
DhStreamParser.dll	Data stream analyzer
dllh264.dll	H.264 decoder library
ParaTimer.dll	Timer library
HWPlay.dll	Decode card interface library
dhtmman32.dll	Decode card driver library
dspdec.out	Decode card DSP library
Password.dll	Character string encryption library

**Note:**

**Slight differences may be found in user interface.**

**All the designs and software here are subject to change without prior written notice.**